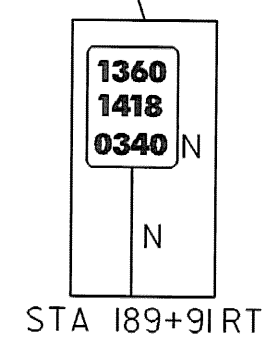
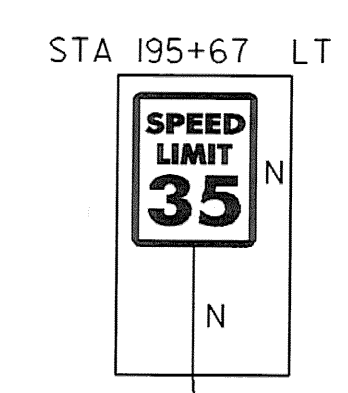
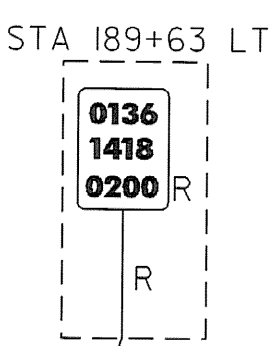
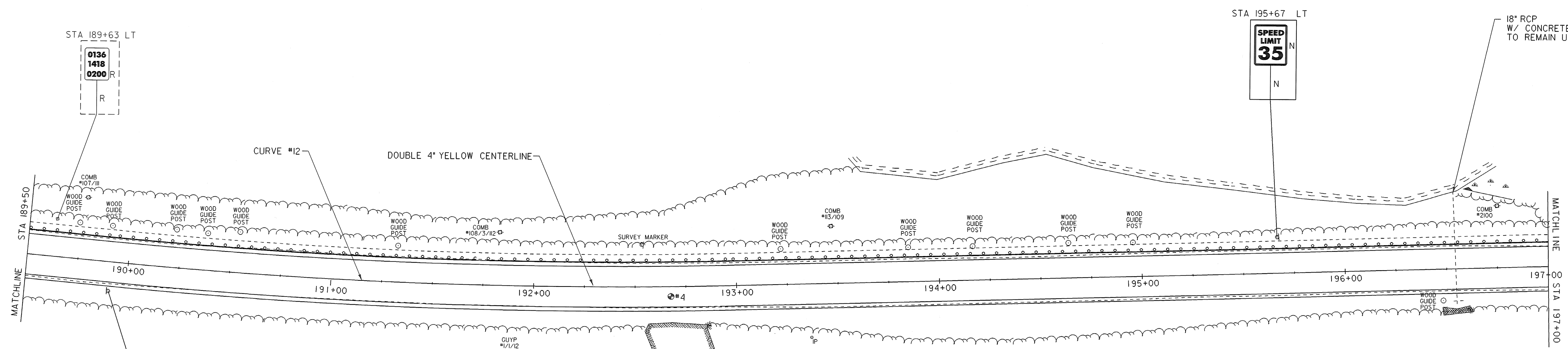
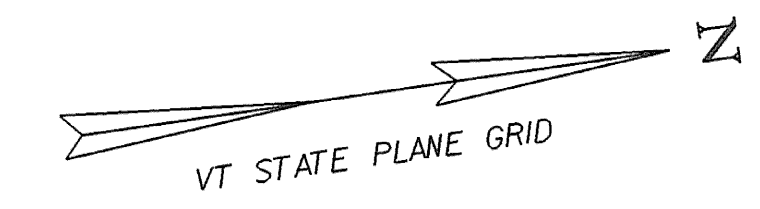


TEMPORARY 4" YELLOW LINE, PAINT
 STA 189+50 TO STA 197+00, SOLID LT & RT

4" YELLOW LINE, PAINT
 STA 189+50 TO STA 197+00, SOLID LT & RT

REMOVING SIGNS
 STA 189+63 LT

STEEL BEAM GUARDRAIL, GALVANIZED
 STA 189+50 TO STA 197+00 LT

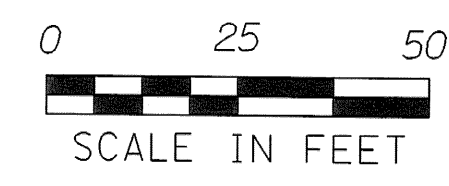


18" RCP
 W/ CONCRETE HEADWALL
 TO REMAIN UNDISTURBED

LEGEND

R = REMOVE EXISTING
 S = SALVAGE
 R&S = REMOVE & SALVAGE
 N = NEW
 RET = RETAIN
 B-B = BACK TO BACK

- NOTES:**
- EXISTING SHOULDER MATERIAL ON TOWN HIGHWAYS SHALL BE EXCAVATED TO A DEPTH OF 3" OR AS DIRECTED BY THE RESIDENT ENGINEER. SEE GENERAL NOTE #6 SHEET 3 FOR MORE INFORMATION.
 - SEE SHEET 5 & 10 FOR REDUCED STEEL BEAM GUARDRAIL POST SPACING FOR CULVERT AND UTILITY POLE DETAILS.
 - WHITE LINES SHOWN ON PLANS IS FOR DISPLAY PURPOSES ONLY.



● PAVEMENT CORES

NUMBER	TOTAL DEPTH	SOLID CORE	COMMENTS
4	5 1/2"	YES	NO

LAYOUT SHEET #18

PROJECT NAME:	SPRINGFIELD	FILE NAME: ...02c084\...02c084_hul.dgn	PLOT DATE: 06-JAN-2009
PROJECT NUMBER:	STP 0136(I)	PROJECT LEADER: K. UPMAL	DRAWN BY: B. KIPP\N. PAPPAS
		DESIGNED BY: B. KIPP\N. PAPPAS	CHECKED BY: N. PAPPAS
		IPARM FILE NAME: 02c084_lay_18	SHEET 31 OF 68