

TEMPORARY 4" YELLOW LINE, PAINT
 STA 159+50 TO STA 167+00, SOLID LT & RT

4" YELLOW LINE
 STA 159+50 TO STA 167+00, SOLID LT & RT

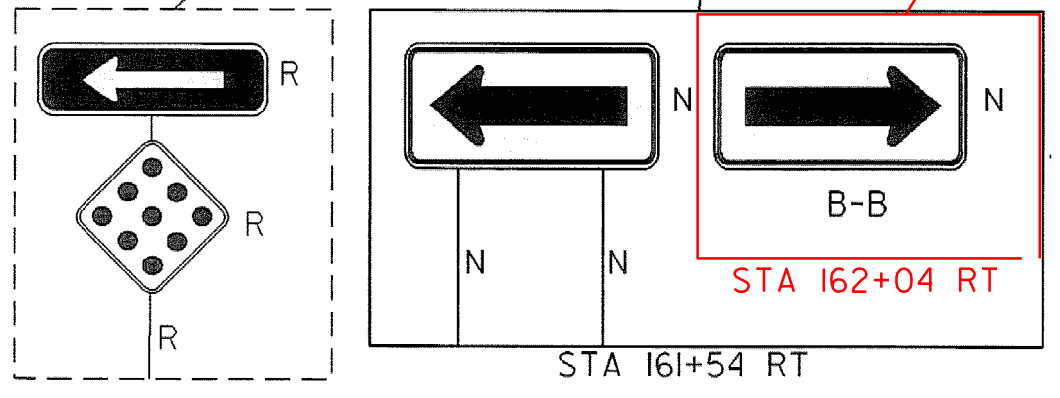
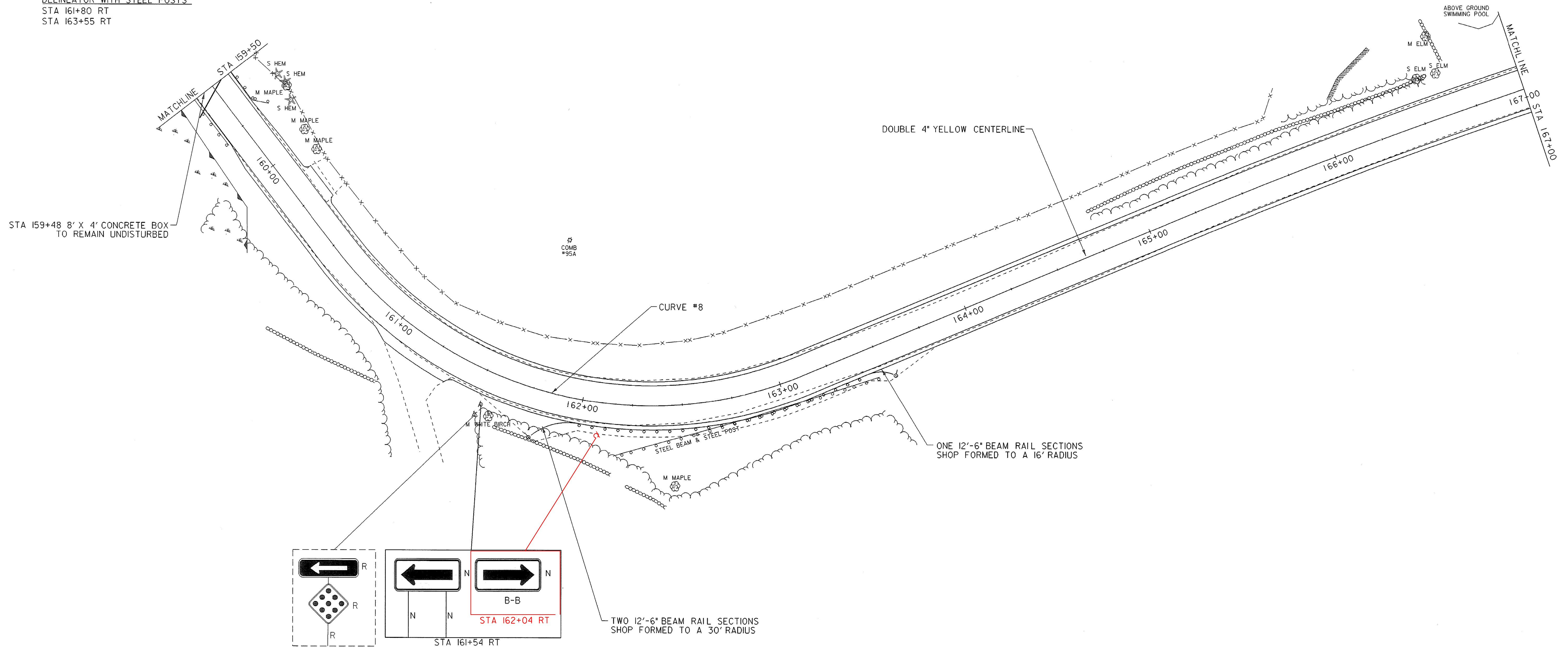
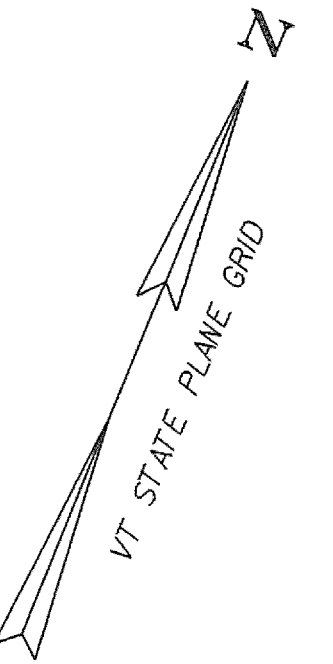
REMOVING SIGNS
 STA 161+53 RT

REMOVAL AND DISPOSAL OF GUARDRAIL
 STA 162+20 TO STA 163+47 RT

STEEL BEAM GUARDRAIL, GALVANIZED
 STA 161+80 TO STA 163+55 RT

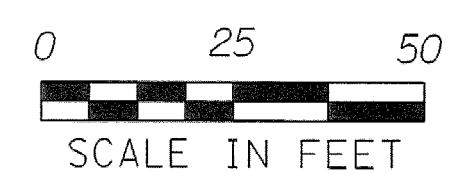
ANCHOR FOR STEEL BEAM RAIL
 STA 161+80 RT
 STA 163+55 RT

DELINEATOR WITH STEEL POSTS
 STA 161+80 RT
 STA 163+55 RT



LEGEND	
R	= REMOVE EXISTING
S	= SALVAGE
R&S	= REMOVE & SALVAGE
N	= NEW
RET	= RETAIN
B-B	= BACK TO BACK

- NOTES:
- EXISTING SHOULDER MATERIAL ON TOWN HIGHWAYS SHALL BE EXCAVATED TO A DEPTH OF 3" OR AS DIRECTED BY THE RESIDENT ENGINEER. SEE GENERAL NOTE #6 SHEET 3 FOR MORE INFORMATION.
 - SEE SHEET 5 & 10 FOR REDUCED STEEL BEAM GUARDRAIL POST SPACING FOR CULVERT AND UTILITY POLE DETAILS.
 - WHITE LINES SHOWN ON PLANS IS FOR DISPLAY PURPOSES ONLY.



LAYOUT SHEET #14

PROJECT NAME:	SPRINGFIELD
PROJECT NUMBER:	STP 0136(1)
FILE NAME: ...02c084\...02c084_nul.dgn	PLOT DATE: 06-JAN-2009
PROJECT LEADER: K. UPMAL	DRAWN BY: B. KIPP\N. PAPPAS
DESIGNED BY: B. KIPP\N. PAPPAS	CHECKED BY: N. PAPPAS
IPARM FILE NAME: 02c084_lay_14	SHEET 27 OF 68