

TEMPORARY 4" YELLOW LINE, PAINT  
 STA 77+00 TO STA 82+83, SOLID LT & RT  
 STA 83+25 TO STA 84+50, SOLID LT & RT  
 STA 83+05 LT, SOLID LT & RT

TEMPORARY 24" STOP BAR, PAINT  
 STA 82+91LT MAPLE DELL ROAD

TEMPORARY LETTER OR SYMBOL, PAINT  
 STA 82+91LT "STOP"

4" YELLOW LINE  
 STA 77+00 TO STA 82+83, SOLID LT & RT  
 STA 83+25 TO STA 84+50, SOLID LT & RT  
 STA 83+05 LT, SOLID LT & RT

24" STOP BAR  
 STA 82+91LT MAPLE DELL ROAD

LETTER OR SYMBOL  
 STA 82+91LT "STOP"

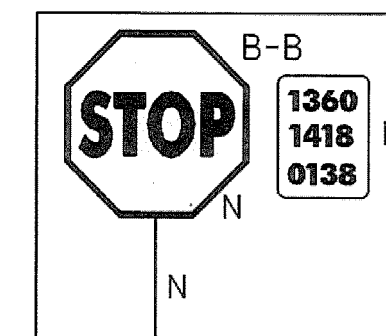
REMOVING SIGNS  
 STA 81+25 RT  
 STA 82+72 LT

REMOVAL AND DISPOSAL OF GUARDRAIL  
 STA 77+00 TO STA 77+05 RT  
 STA 77+46 TO STA 80+69 RT 77+52 TO 80+64 LT  
 STA 80+86 TO STA 83+53 RT  
 STA 84+36 TO STA 84+50 LT 84+13 TO 85+18 LT

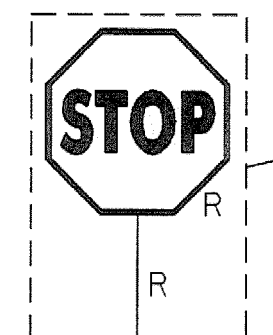
STEEL BEAM GUARDRAIL, GALVANIZED  
 STA 77+56 TO STA 80+69 RT 77+47 TO 80+64 RT  
 STA 80+94 TO STA 81+06 RT  
 STA 81+31 TO STA 83+58 RT  
 STA 83+52 TO STA 84+38 LT 83+38 TO 84+50 LT

STEEL BEAM GUARDRAIL, GALVANIZED/NESTED  
~~STA 81+06 TO STA 81+31 RT~~  
 STA 84+38 TO STA 84+50 LT 84+63 LT  
 STA 84+38 TO STA 84+63 RT  
 ANCHOR FOR STEEL BEAM RAIL  
 STA 77+56 RT 77+50 RT  
 STA 80+69 RT 80+63 RT  
 STA 80+94 RT  
 STA 83+58 RT  
 STA 83+52 LT

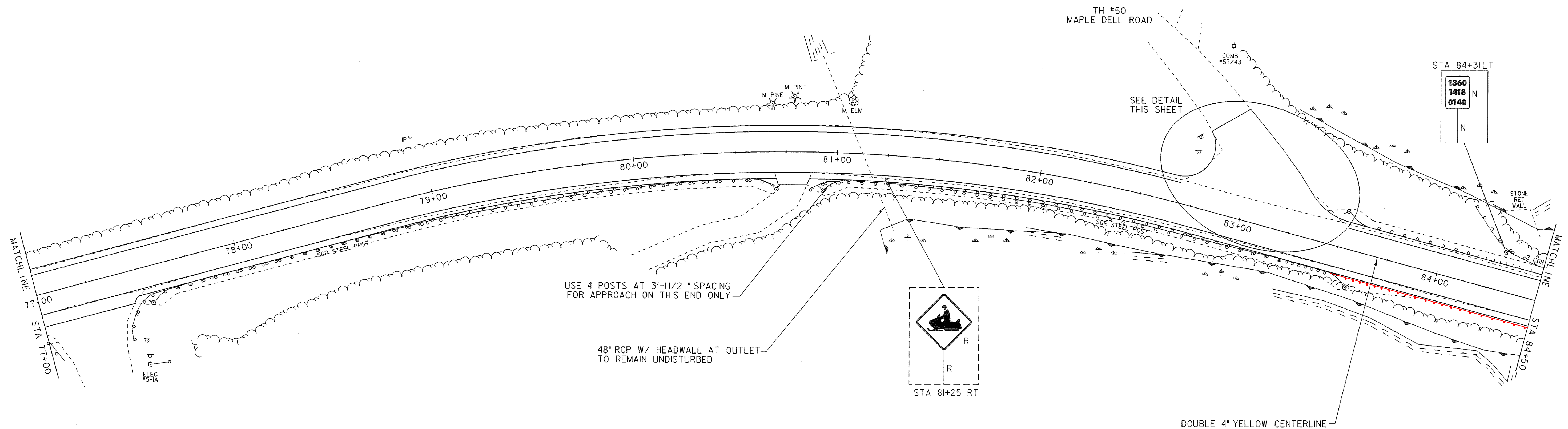
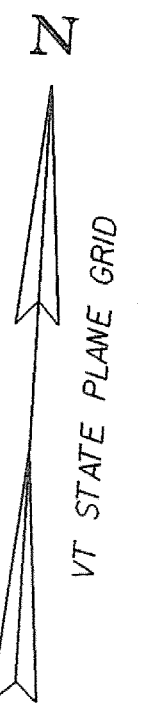
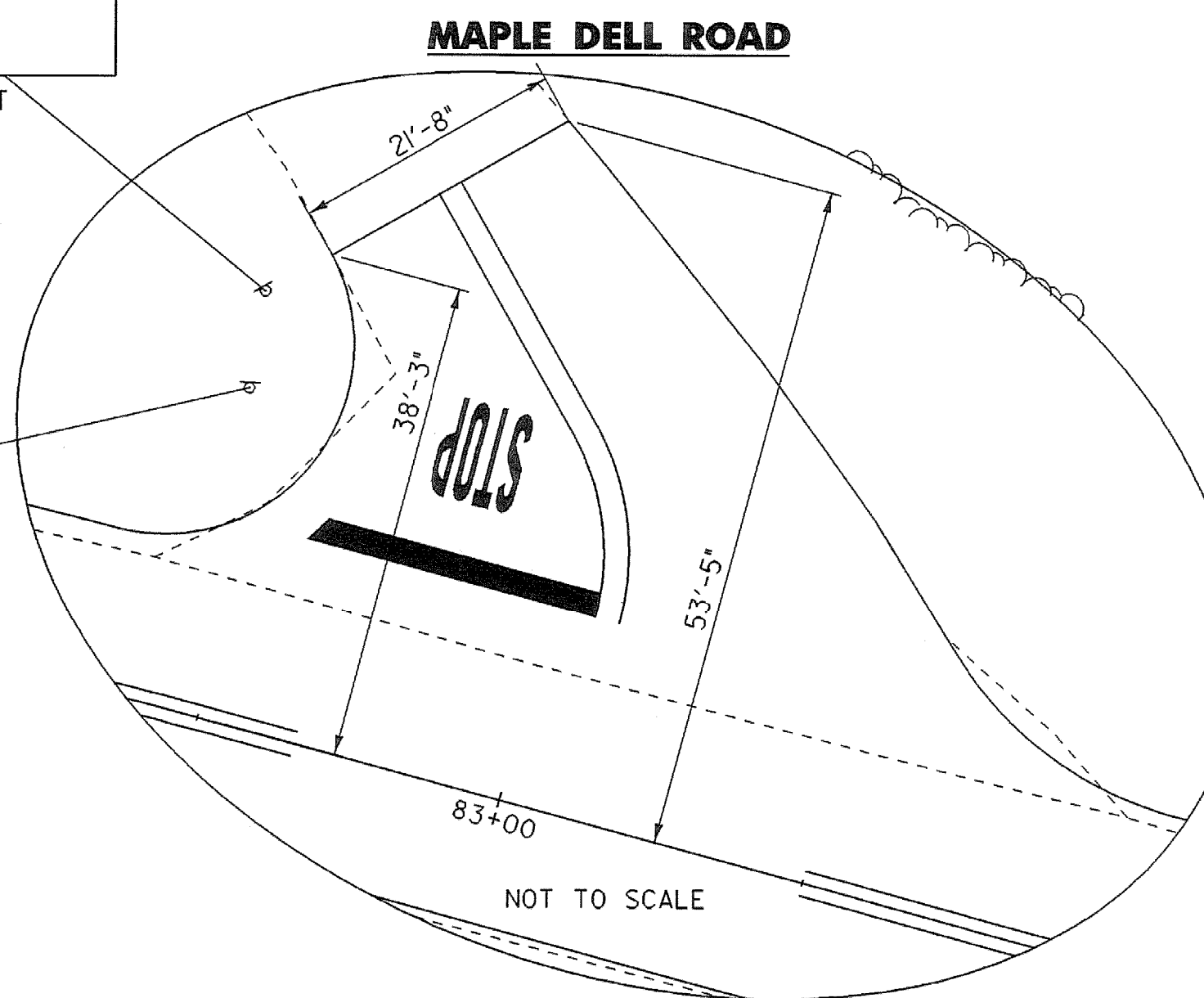
DELINEATOR WITH STEEL POSTS  
 STA 77+56 RT  
 STA 80+69 RT  
 STA 80+94 RT  
 STA 83+58 RT  
 STA 83+52 LT



STA 82+71 LT



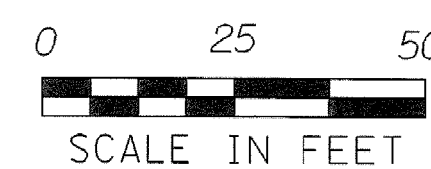
STA 82+72 LT



LEGEND	
R	= REMOVE EXISTING
S	= SALVAGE
R&S	= REMOVE & SALVAGE
N	= NEW
RET	= RETAIN
B-B	= BACK TO BACK

NOTES:

- EXISTING SHOULDER MATERIAL ON TOWN HIGHWAYS SHALL BE EXCAVATED TO A DEPTH OF 3" OR AS DIRECTED BY THE RESIDENT ENGINEER. SEE GENERAL NOTE #6 SHEET 3 FOR MORE INFORMATION.
- SEE SHEET 5 & 10 FOR REDUCED STEEL BEAM GUARDRAIL POST SPACING FOR CULVERT AND UTILITY POLE DETAILS.
- WHITE LINES SHOWN ON PLANS IS FOR DISPLAY PURPOSES ONLY.



LAYOUT SHEET #3

PROJECT NAME:	SPRINGFIELD	PLOT DATE:	06-JAN-2009
PROJECT NUMBER:	STP 0136(1)	DRAWN BY:	B. KIPP\N. PAPPAS
FILE NAME:	...02c084...02c084_nul.dgn	DESIGNED BY:	B. KIPP\N. PAPPAS
PROJECT LEADER:	K. UPMAL	CHECKED BY:	N. PAPPAS
IPARM FILE NAME:	02c084_lay_03	SHEET	16 OF 68