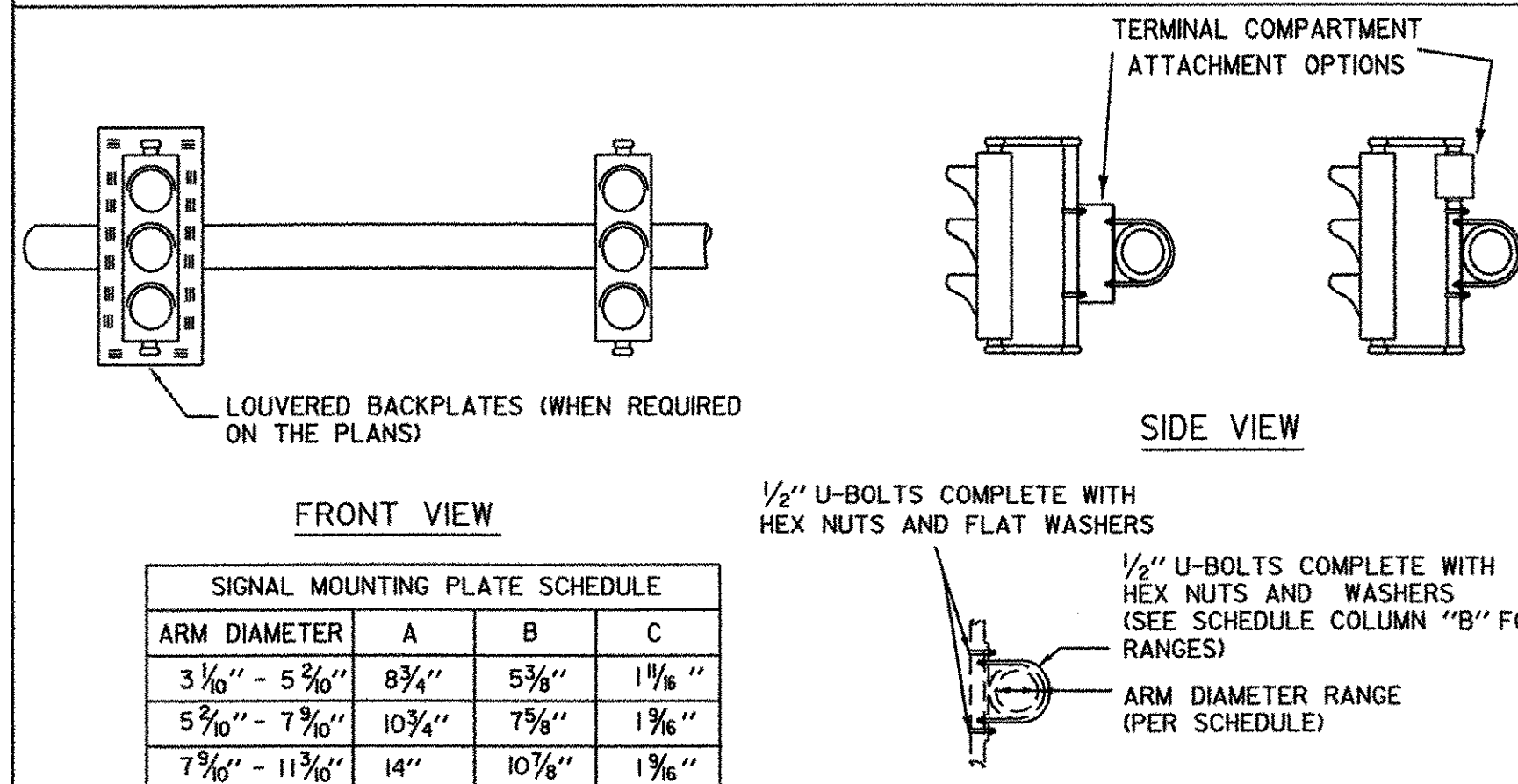


104+45
VT 103
LOOKING WEST



SCALE
IN FEET
HORIZ & VERT

**MAST ARM MOUNTING DETAILS FOR FIXED MOUNT TRAFFIC SIGNALS
(PREFERRED METHOD)**



SIGNAL MOUNTING PLATE SCHEDULE			
ARM DIAMETER	A	B	C
3 1/16" - 5 3/16"	8 3/4"	5 3/8"	1 1/16"
5 3/16" - 7 3/16"	10 3/4"	7 3/8"	1 3/16"
7 3/16" - 11 3/16"	14"	10 3/8"	1 3/8"

1/2" U-BOLTS COMPLETE WITH HEX NUTS AND FLAT WASHERS
1/2" U-BOLTS COMPLETE WITH HEX NUTS AND WASHERS (SEE SCHEDULE COLUMN "B" FOR RANGES)
ARM DIAMETER RANGE (PER SCHEDULE)

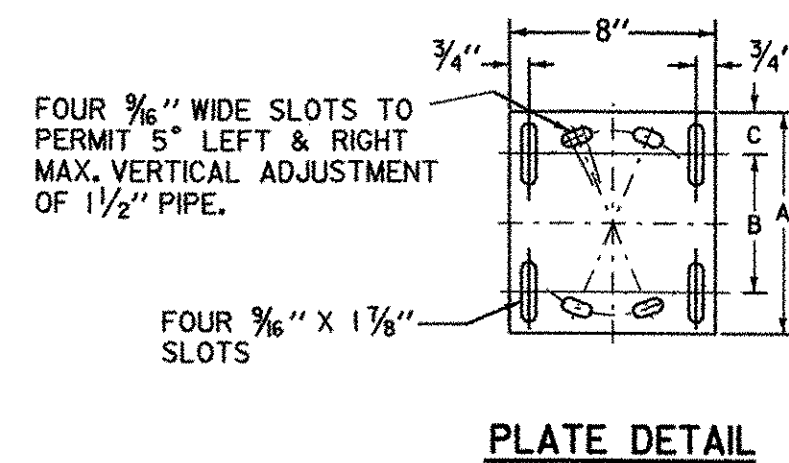
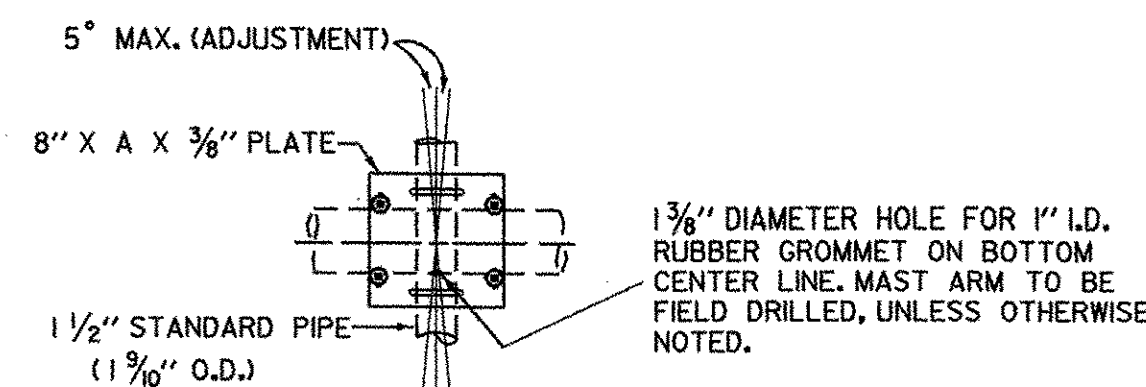


PLATE DETAIL



1. ALTERNATE METHODS FOR RIGID MOUNTING OF SIGNALS TO MAST ARMS MAY BE USED. SHOP DRAWINGS FOR THE ALTERNATE METHOD HARDWARE SHALL BE SUBMITTED TO THE TRAFFIC DESIGN SECTION VIA THE RESIDENT ENGINEER FOR APPROVAL PRIOR TO CONSTRUCTION.
2. ALL RIGIDLY MOUNTED TRAFFIC AND PEDESTRIAN SIGNALS SHALL BE PROVIDED WITH REINFORCEMENT PLATES AT THE ATTACHMENT POINTS.
3. ALL NUTS, BOLTS AND WASHERS SHALL BE STAINLESS STEEL.
4. ALL OTHER MOUNTING BRACKET MATERIALS SHALL BE GALVANIZED STEEL.

PROJECT NAME: CLARENDON
PROJECT NUMBER: SGNL 024

FILE NAME: /traf/02b240/tb240sig.dgn PLOT DATE: 02-NOV-2004
PROJECT LEADER: nyquist DRAWN BY: JFG
DESIGNED BY: CHECKED BY:
/traf/02b240/tb240xm2.1 SHEET 15 OF 37

Scen - ma2