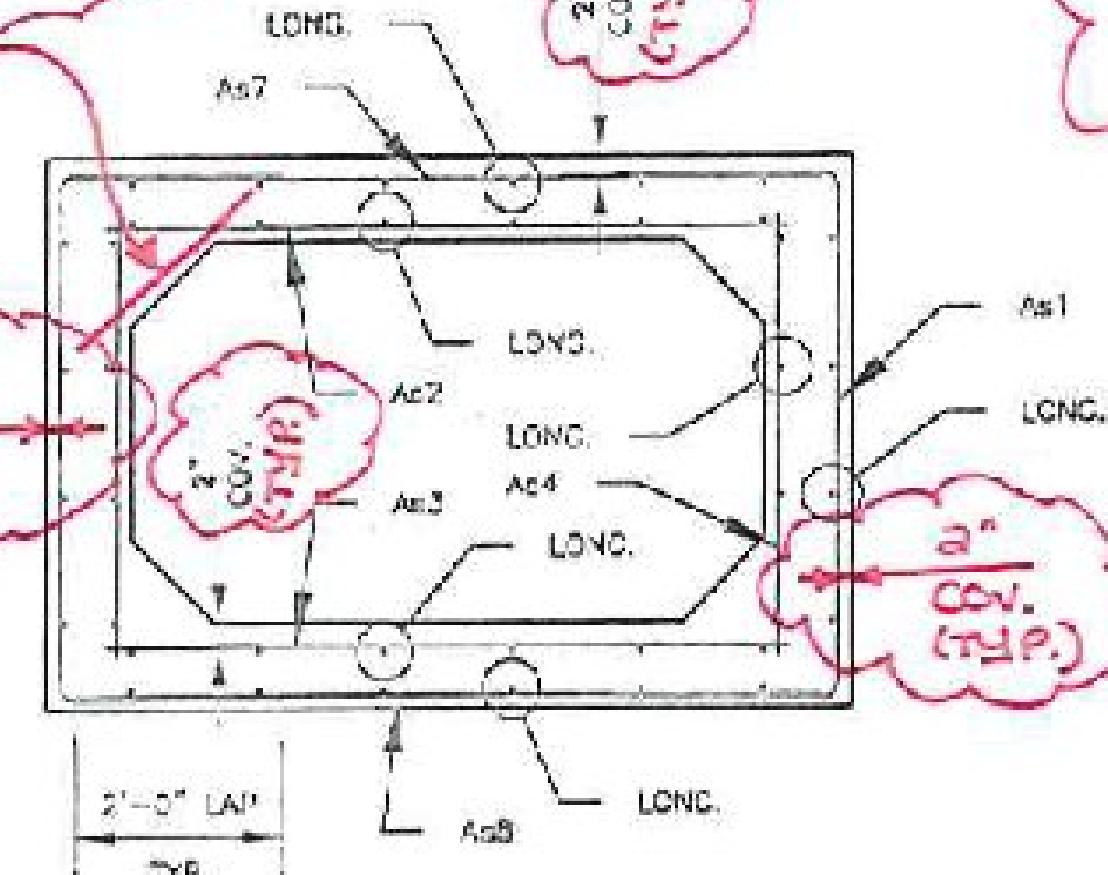


AN ANGLE BAR SHOULD BE PROVIDED AT ALL CHAMFERS.



CULVERT REINFORCING SECTION

AS1 BAR IN B-2 SCHEDULE IS A U BAR AND IN B-1 & B-3 SCHEDULE IS AN L BAR. DIFFERENT BAR MARKS SHOULD BE GIVEN FOR CLARITY SINCE BARS ARE NOT THE SAME.

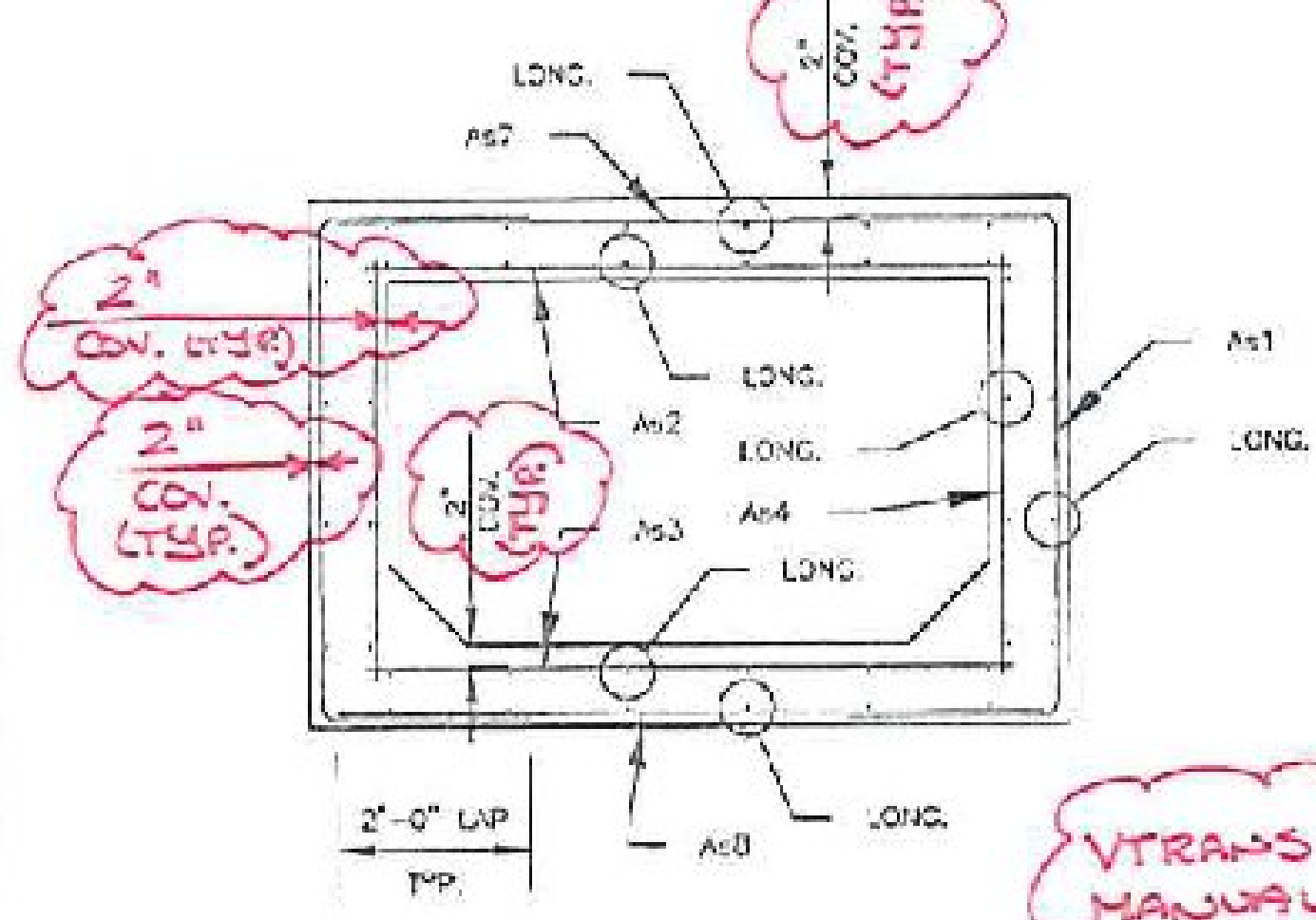
NOT LONG ENOUGH TO PROVIDE 2'-0" LAP

B-2 BAR SCHEDULE				B	C	
MARK	BAR SIZE	MAX. SPACING	LENGTH	TYPE	"U" BAR	
As1	#4	12"	7'-11"	"U"	1'-10"	4'-3"
As2	#4	12"	5'-8"	STR	-	-
As3	#4	8"	5'-8"	STR	-	-
As4	#4	12"	3'-8"	STR	-	-
As7	#4	12"	6'-0"	STR	-	-
As5	#4	12"	6'-0"	STR	-	-
LONG.	#4	12"	6'-11"	STR	-	-

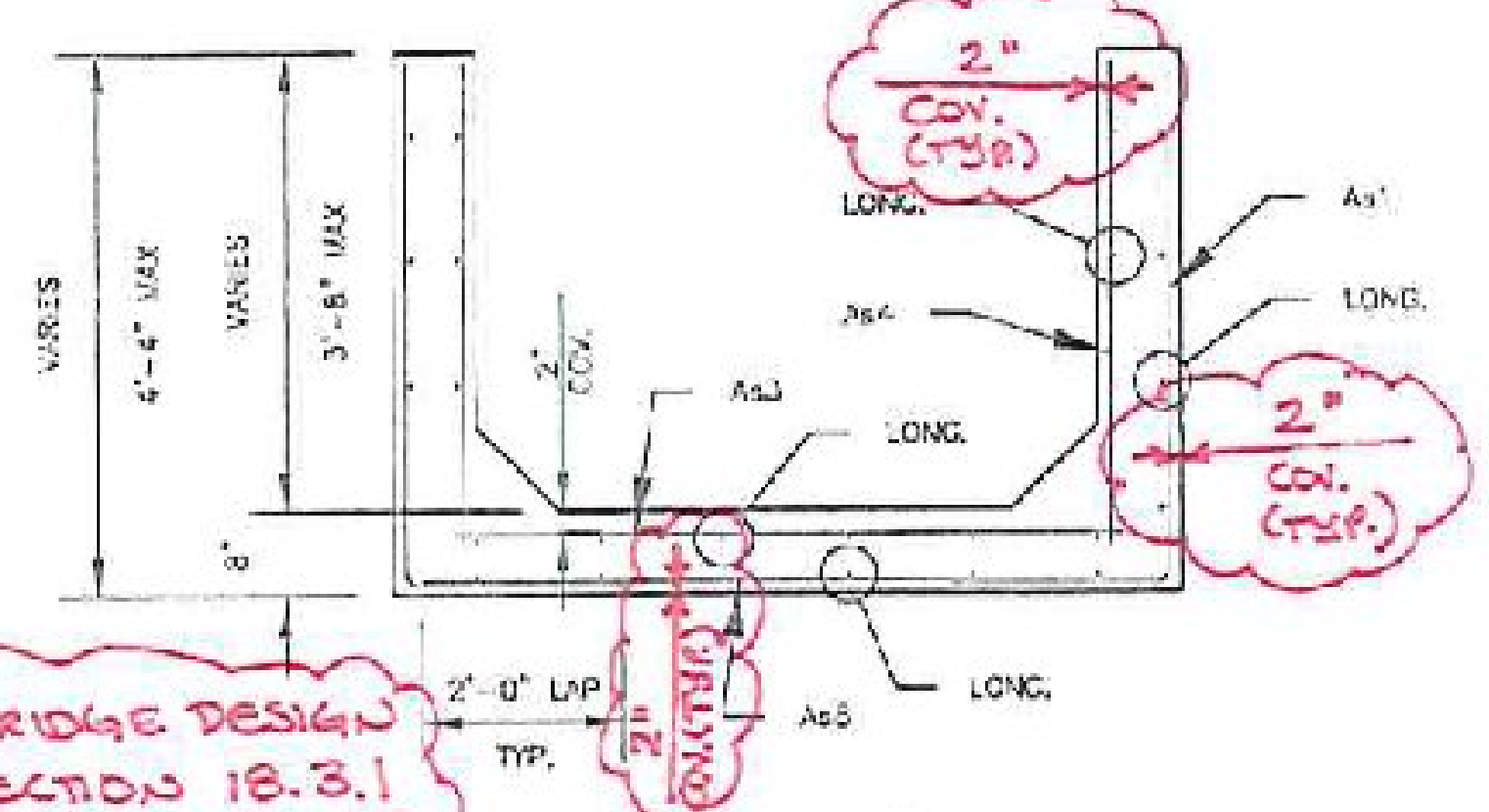
MAX HEIGHT IS 4'-4". A 4'-3" BAR DOES NOT PROVIDE ENOUGH COVER.

* PROVIDE 4 ADD'L #4 BARS TO SPACING

TYPICAL CULVERT GEOMETRY



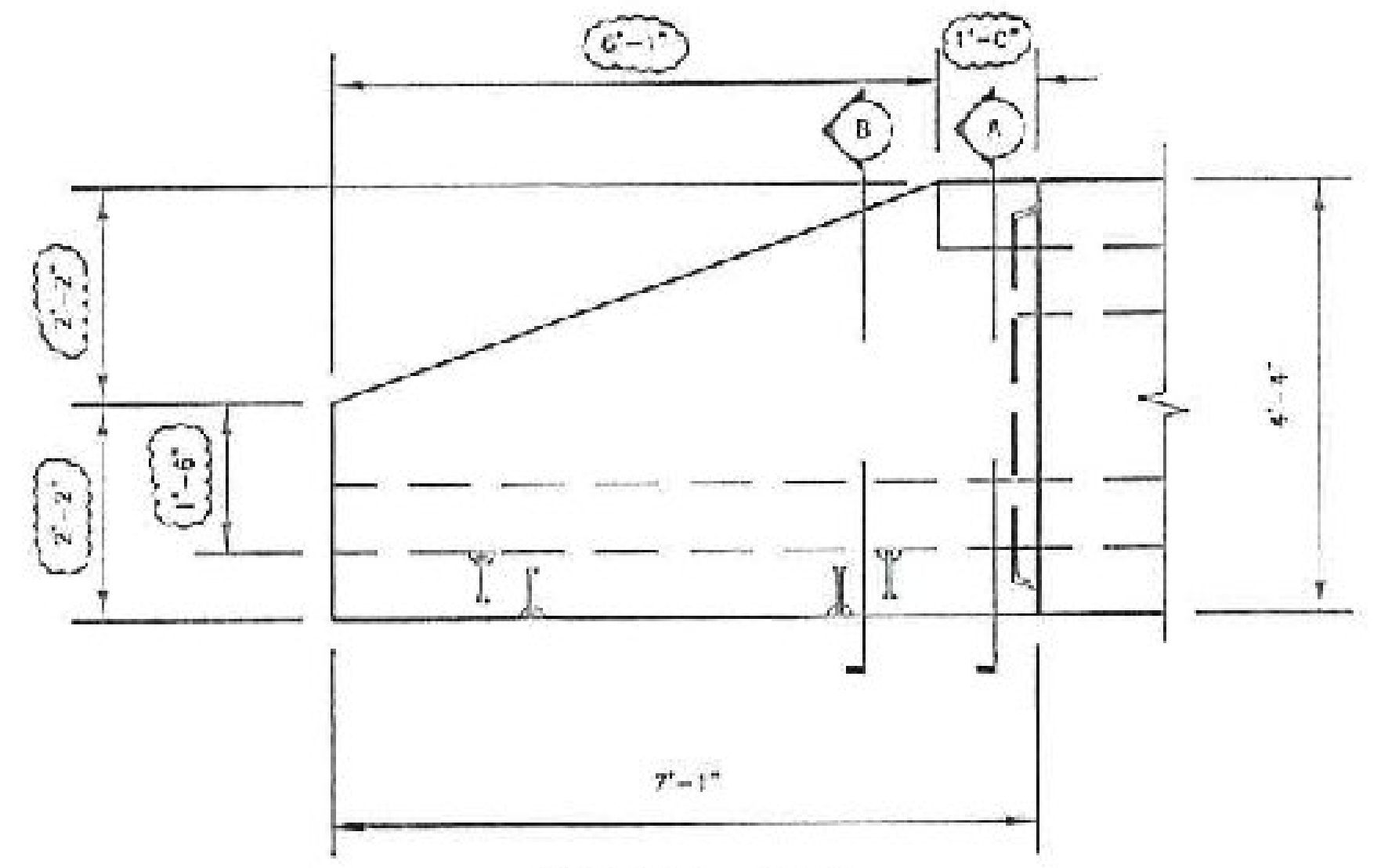
END SECTION REINFORCING SECTION A



END SECTION REINFORCING SECTION B

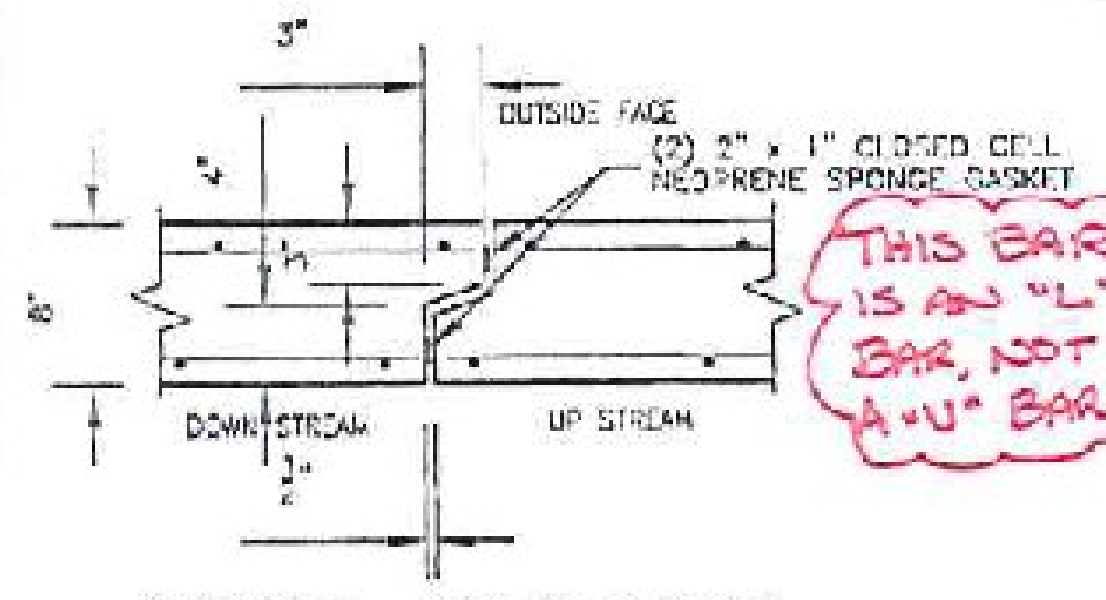
VTRANS BRIDGE DESIGN MANUAL SECTION 18.3.1 REQUIRES #5'S AT 12" FOR MINIMUM REINFORCEMENT. IF #4'S SATISFY DESIGN REQUIREMENTS, PROBABLY OK IF VTRANS APPROVES.

B SECTIONS REQUIRE 2'-0" LAP BUT MAX. B IS ONLY 1'-10". B NEEDS TO BE INCREASED



TYPICAL END SECTION GEOMETRY (D-1 SHOWN D-3 SIMILAR)

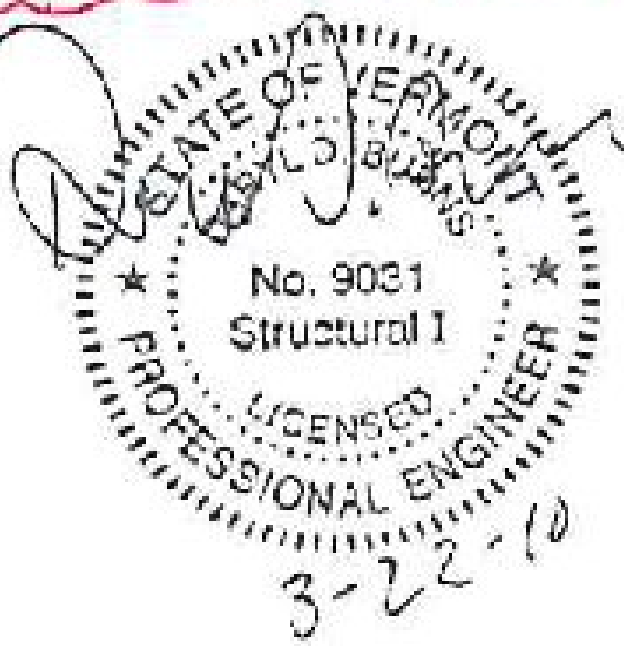
CONTRACTOR TO VERIFY CLOUDED DIMENSIONS PRIOR TO PRODUCTION.



TYPICAL JOINT DETAIL

THIS BAR IS AN "L" BAR, NOT A "U" BAR.

B-1 & B-3 BAR SCHEDULE				B	C	
MARK	BAR SIZE	MAX. SPACING	MAX LENGTH (MAY VARY)	TYPE	MAX B	MAX C
As1	#4	12"	5'-10"	"U"	1'-10"	4'-6"
As2	#4	12"	5'-8"	STR	-	-
As3	#4	12"	5'-8"	STR	-	-
As4	#4	12"	3'-8"	STR	-	-
As7	#4	12"	6'-0"	STR	-	-
As8	#4	12"	6'-0"	STR	-	-
LONG.	#4	12"	6'-11"	STR	-	-



PREPARED BY: **DELTA**
 ENGINEERS, ARCHITECTS, & LAND SURVEYORS
 154 COURT STREET, BINGHAMTON, NY 13901
 TEL: (607) 331-0000 FAX: (607) 331-6000

PREPARED FOR: **CAMP PRECAST CONCRETE PRODUCTS**
 78 PRECAST RD MILTON, VT 05454

DATE: 12/24/09 SHEET NO: DETAILS DRAWN BY: KRWB
 SCALE: N.T.S. CHECKED BY: JMK

PROJECT: **VT01 US ROUTE 7 BOX CULVERT, 5'-0" x 3'-0" x 85'-5" TOWN OF BRANDON, VT**

CONTRACT NO: PD-01
 DELTA PROJ NO: 2009.004.010 SHEET NO: 2 OF 3