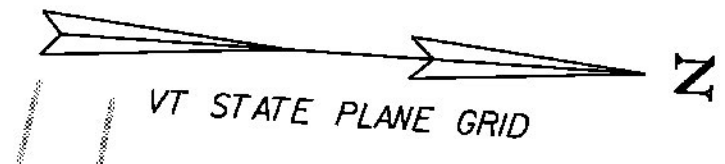


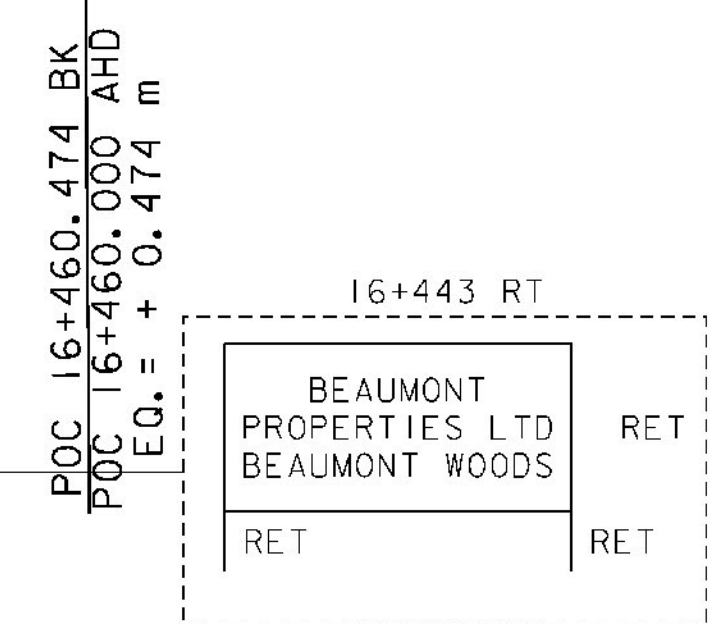
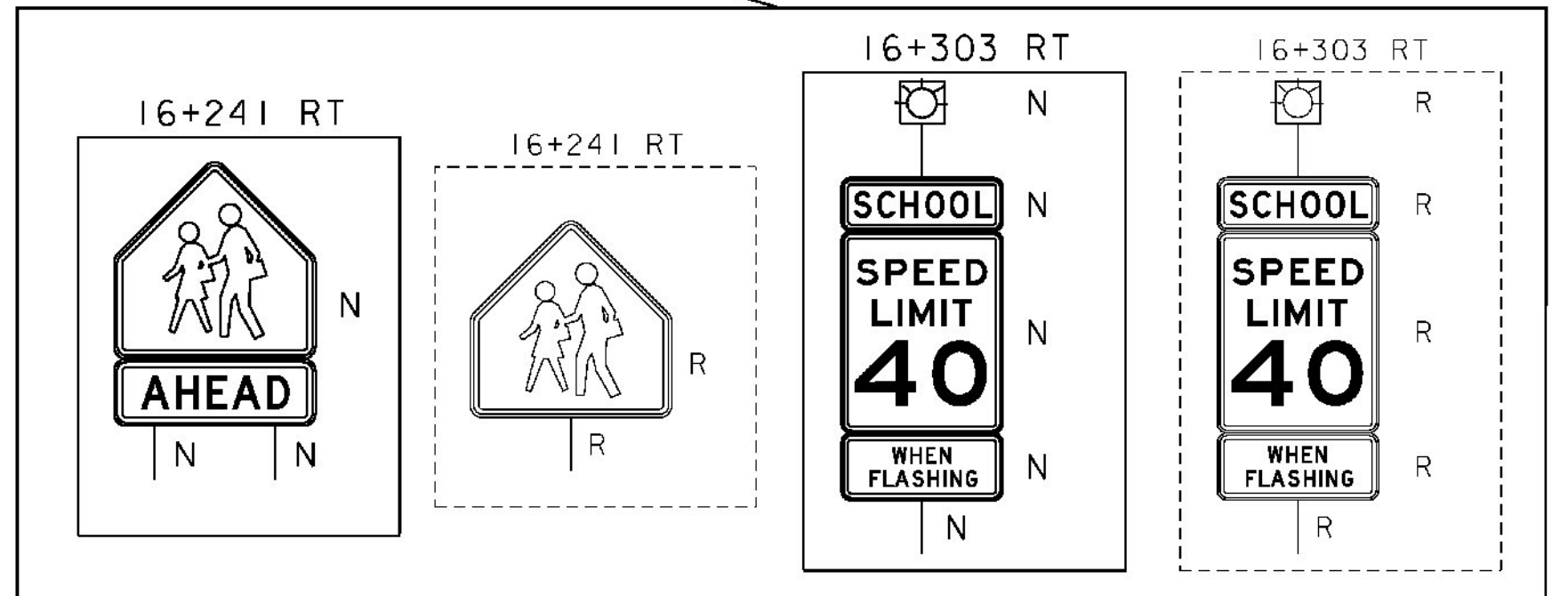
STA 16+418.474 BK  
BEGIN APPROACH

STA 16+460.000 AHD  
END APPROACH  
BEGIN PROJECT  
NH 019-3(495)



16+360 US 7 16+380 16+400 16+420 16+440 16+460 16+480 16+500 16+520

MATCH LINE STA 16+530



TEMPORARY 100mm WHITE LINE, PAINT  
DURABLE 100mm WHITE LINE, THERMOPLASTIC  
STA 16+418.5 TO 16+530 SOLID LT & RT

TEMPORARY 600mm STOP BAR, PAINT  
DURABLE 600mm STOP BAR, THERMOPLASTIC  
STA 16+470 - 16+480 LT (OVUHS DRIVE)

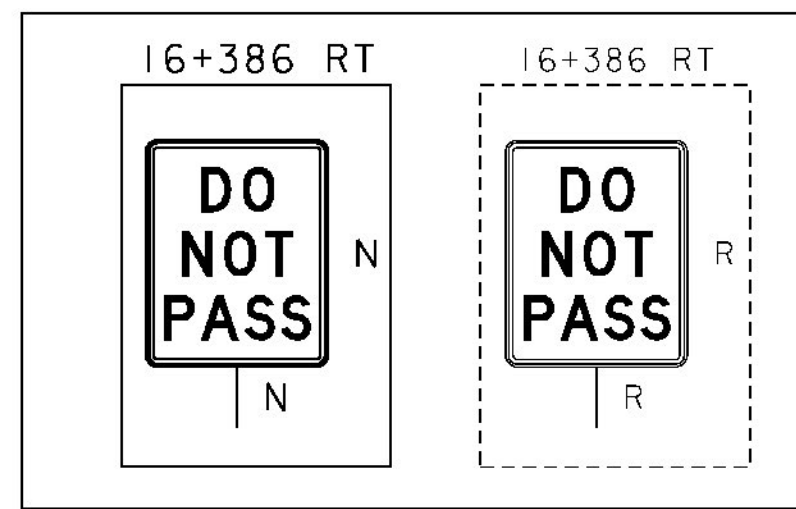
TEMPORARY 100mm YELLOW LINE, PAINT  
DURABLE 100mm YELLOW LINE, THERMOPLASTIC  
STA 16+418.5 TO 16+530 SOLID LT & RT  
STA 16+440.0 TO 16+530 SOLID LT & RT (PAINTED ISL.)

REMOVING SIGNS  
AS SHOWN - II

DURABLE 200mm YELLOW LINE, THERMOPLASTIC  
STA 16+465 TO 16+530 SOLID LT & RT (DIAG LINES)

**SIGN LEGEND**

- R = REMOVE
- S = SALVAGE
- N = NEW
- RET = RETAIN
- T&T = THINNING & TRIMMING
- B-B = BACK TO BACK
- EXISTING - - - - -
- NEW - - - - -



TEMPORARY LETTER OR SYMBOL, PAINT  
STA 16+241 RT - "SCHOOL"  
STA 16+475 LT - "STOP" (OVUHS)

DURABLE LETTER OR SYMBOL, THERMOPLASTIC  
STA 16+241 RT - "SCHOOL"  
STA 16+475 LT - "STOP" (OVUHS)



SIGNING & PAVEMENT MARKING I	
PROJECT NAME:	BRANDON
PROJECT NUMBER:	NH 019-3(495)
FILE NAME:	zb008s5-ts01.dgn
PROJECT LEADER:	CRB
DESIGNED BY:	NLL
CLD 02-0149	
PLOT DATE:	9/3/2009
DRAWN BY:	HJC
CHECKED BY:	PTS
	SHEET 242 OF 546