



EXTENSION SERVICE AND CURB STOP (25 mm)  
CORPORATION STOP (25 mm)  
STA 20+731 RT (NON-PART.)  
STA 20+792 RT (PART.)

SEAMLESS COPPER WATER TUBE (25 mm)  
STA 20+730 RT - 20+731 RT (NON-PART.)  
STA 20+792 RT - 20+792 RT (PART.)

PVC SEWER PIPE (100 mm)  
STA 20+799.4 RT - 20+804.8 LT (PART.)

INSULATION BOARD  
STA 20+740 RT (NON-PART.)  
STA 20+780 LT (PART.)  
STA 20+780 RT (PART.)

PVC SEWER PIPE (150 mm)  
STA 20+785.5 LT - 20+786.7 LT (PART.)

PVC SEWER PIPE (200 mm)  
STA 20+747.5 LT - 20+777.6 LT (NON-PART.)  
STA 20+777.6 LT - 20+806.6 LT (PART.)

PVC SEWER PIPE (200 mm) (AWWA C-900)  
STA 20+738.0 RT - 20+746.6 LT (NON-PART.)

REMOVE HYDRANT  
STA 20+789.1 LT (PART.)

SANITARY SEWER MANHOLE (1200 mm)  
CAST IRON COVER WITH FRAME, SEWER  
STA 20+737.5 RT (NON-PART.)  
STA 20+747.0 LT (NON-PART.)  
STA 20+807.2 LT (PART.)

DUCTILE IRON PIPE, CEMENT-LINED  
(150 mm) (CLASS 52)  
STA 20+696.0 RT - 20+696.0 RT (NON-PART.)  
STA 20+791.4 RT - 20+791.4 LT (PART.)

DUCTILE IRON PIPE, CEMENT-LINED  
(200 mm) (CLASS 52)  
STA 20+696.0 RT - 20+777.6 RT (NON-PART.)  
STA 20+777.6 RT - 20+800.0 RT (PART.)

HYDRANT  
STA 20+789.1 LT (PART.)

GATE VALVE WITH  
VALVE BOX (150 mm)  
STA 20+696.0 RT (NON-PART.)  
STA 20+798.1 LT (PART.)

STA 20+820.000 AHD  
END APPROACH

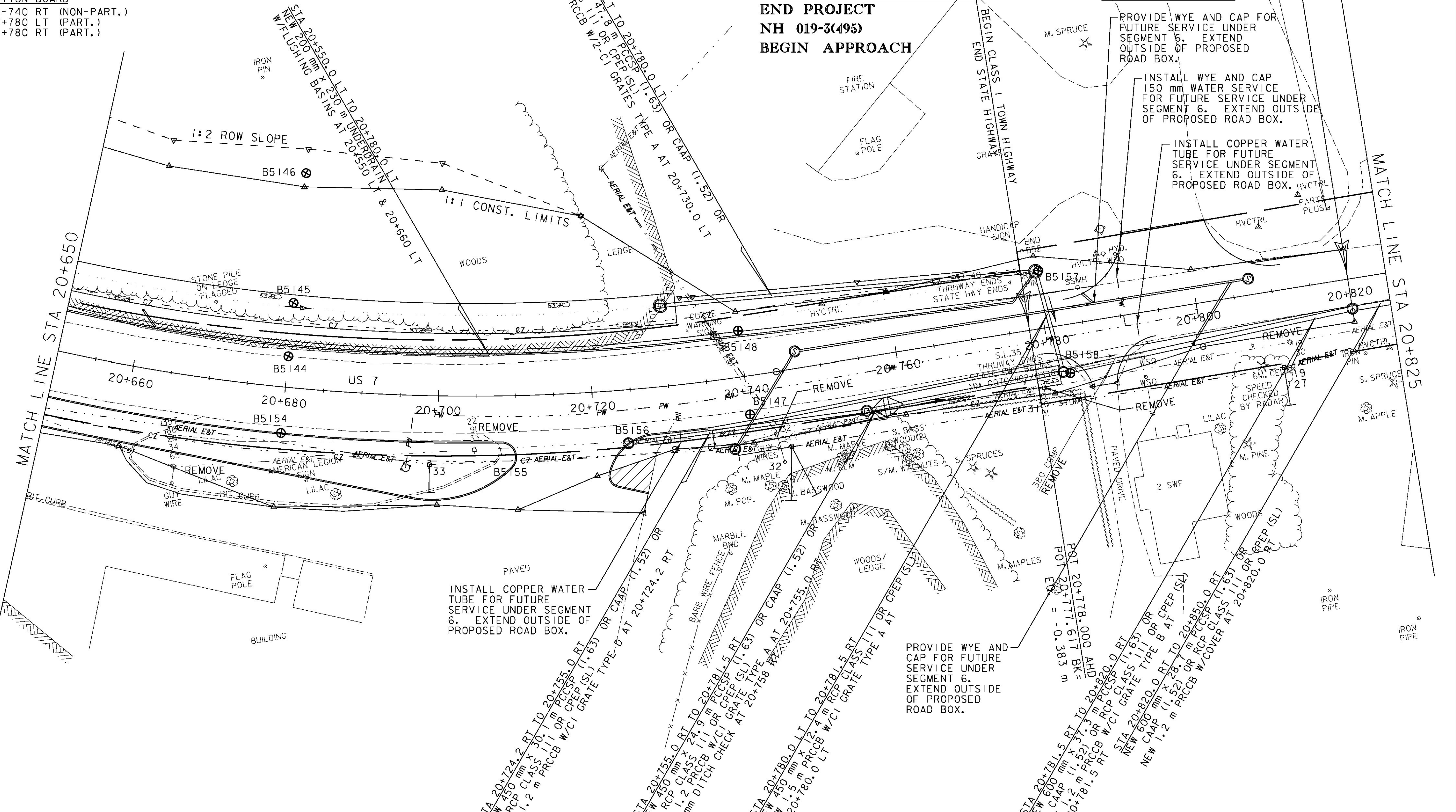
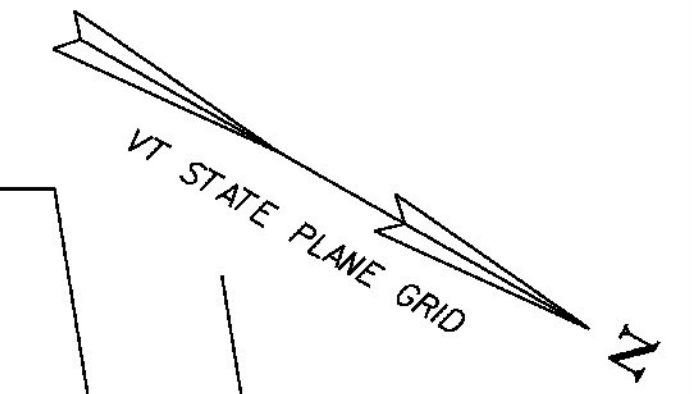
BM #3  
TOP OF S.E. SIGN BASE BOLT  
ELEV. = 42.979 m

PROVIDE WYE AND CAP FOR  
FUTURE SERVICE UNDER  
SEGMENT 6. EXTEND  
OUTSIDE OF PROPOSED  
ROAD BOX.

INSTALL WYE AND CAP  
150 mm WATER SERVICE  
FOR FUTURE SERVICE UNDER  
SEGMENT 6. EXTEND OUTSIDE  
OF PROPOSED ROAD BOX.

INSTALL COPPER WATER  
TUBE FOR FUTURE  
SERVICE UNDER SEGMENT  
6. EXTEND OUTSIDE OF  
PROPOSED ROAD BOX.

STA 20+777.617 BK  
END PROJECT  
NH 019-3(495)  
BEGIN APPROACH



NOTE:  
1. WATER - BRANDON FIRE DISTRICT #1  
2. SEWER - TOWN OF BRANDON, WASTEWATER TREATMENT.  
3. MAINTAIN EXISTING WATER AND SEWER SERVICES.  
INSTALL NEW WATER AND SEWER AS SHOWN AND CAP.  
CONNECTION TO NEW WATER AND SEWER WILL BE COMPLETED  
DURING SEGMENT 6 CONSTRUCTION.



DRAINAGE & UTILITY LAYOUT 28	
PROJECT NAME:	BRANDON
PROJECT NUMBER:	NH 019-3(495)
FILE NAME:	z000855-drn28.dgn
PROJECT LEADER:	CRB
DESIGNED BY:	DAM
CLD 02-0149	
PLOT DATE:	9/3/2009
DRAWN BY:	NLL
CHECKED BY:	PTS
	SHEET 208 OF 546