

STONE FILL, TYPE II (IN DITCHES)
 GEOTEXTILE UNDER STONE FILL
 STA 19+730 - 19+765 LT
 STA 19+760 - 19+800 RT
 STA 19+833 - 19+870 RT

STONE FILL, TYPE II (ON SLOPES)
 GEOTEXTILE UNDER STONE FILL
 STA 19+700 - 19+730 LT
 STA 19+800 - 19+824 RT

TEMPORARY STONE CHECK DAM, TYPE I
 STA 19+730 - 19+765 LT (DITCH)

INLET PROTECTION DEVICE, TYPE I
 STA 19+760 RT
 STA 19+832 RT

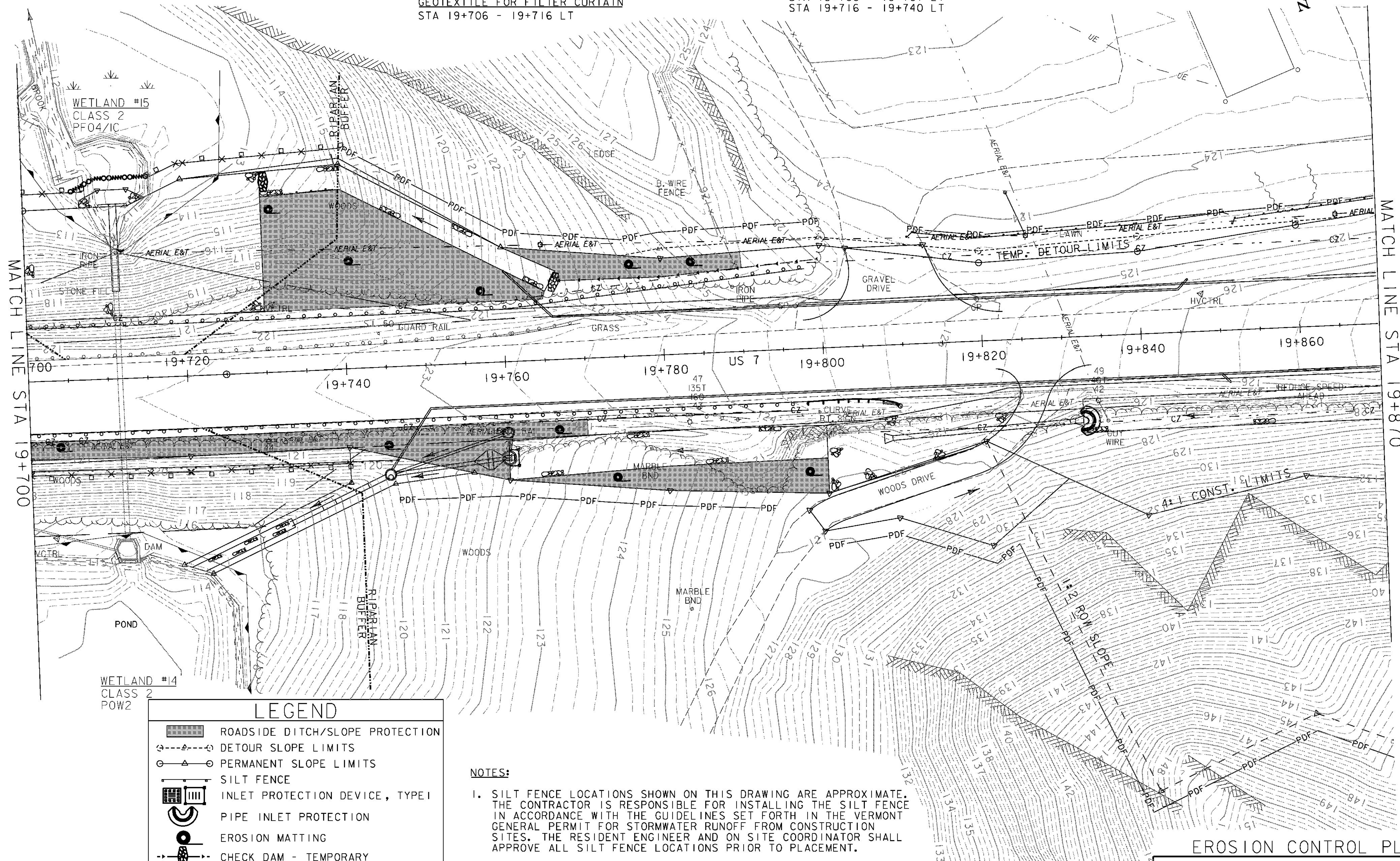
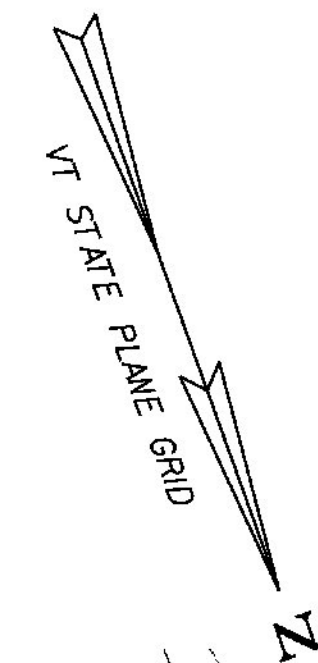
TEMPORARY EROSION MATTING (ON SLOPES)
 STA 19+700 - 19+770 RT
 STA 19+730 - 19+765 LT
 STA 19+760 - 19+790 LT
 STA 19+760 - 19+800 RT

GEOTEXTILE FOR FILTER CURTAIN
 STA 19+706 - 19+716 LT

GEOTEXTILE FOR SILT FENCE
 STA 19+700 - 19+746 RT
 STA 19+731 - 19+740 LT (2)
 STA 19+811 - 19+870 LT (2)

PROJECT DEMARCATION FENCE
 STA 19+740 - 19+800 LT
 STA 19+746 - 19+793 RT
 STA 19+800 - 19+870 RT
 STA 19+811 - 19+870 LT

BARRIER FENCE
 STA 19+700 - 19+740 RT
 STA 19+700 - 19+707 LT
 STA 19+716 - 19+740 LT



MATCH LINE STA 19+700

MATCH LINE STA 19+870

LEGEND

- ROADSIDE DITCH/SLOPE PROTECTION
- DETOUR SLOPE LIMITS
- PERMANENT SLOPE LIMITS
- SILT FENCE
- INLET PROTECTION DEVICE, TYPE I
- PIPE INLET PROTECTION
- EROSION MATTING
- CHECK DAM - TEMPORARY
- BARRIER FENCE
- PROJECT DEMARCATION FENCE
- FILTER CURTAIN

NOTES:

1. SILT FENCE LOCATIONS SHOWN ON THIS DRAWING ARE APPROXIMATE. THE CONTRACTOR IS RESPONSIBLE FOR INSTALLING THE SILT FENCE IN ACCORDANCE WITH THE GUIDELINES SET FORTH IN THE VERMONT GENERAL PERMIT FOR STORMWATER RUNOFF FROM CONSTRUCTION SITES. THE RESIDENT ENGINEER AND ON SITE COORDINATOR SHALL APPROVE ALL SILT FENCE LOCATIONS PRIOR TO PLACEMENT.
2. FOR EROSION PREVENTION AND SEDIMENT CONTROL PLAN GENERAL NOTES, SEE SHEETS 147 - 148, AND DETAILS, SEE SHEETS 177 - 180.



EROSION CONTROL PLAN 22

PROJECT NAME: BRANDON	PLOT DATE: 9/3/2009
PROJECT NUMBER: NH 019-3(495)	DRAWN BY: NLL
FILE NAME: zb008s5-ec22.dgn	CHECKED BY: PTS
PROJECT LEADER: CRB	SHEET 170 OF 546
DESIGNED BY: NLL	
CLD 02-0149	