

STONE FILL, TYPE II (IN DITCHES)  
 GEOTEXTILE UNDER STONE FILL  
 STA 17+010 - 17+030 LT

TEMPORARY STONE CHECK DAM, TYPE I  
 STA 17+010 - 17+095 LT

INLET PROTECTION DEVICE, TYPE I  
 STA 17+100 RT  
 STA 17+160 RT

TEMPORARY EROSION MATTING (IN DITCHES)  
 STA 17+030 - 17+095 LT

TEMPORARY EROSION MATTING (ON SLOPES)  
 STA 17+010 - 17+020 LT  
 STA 17+130 - 17+170 LT

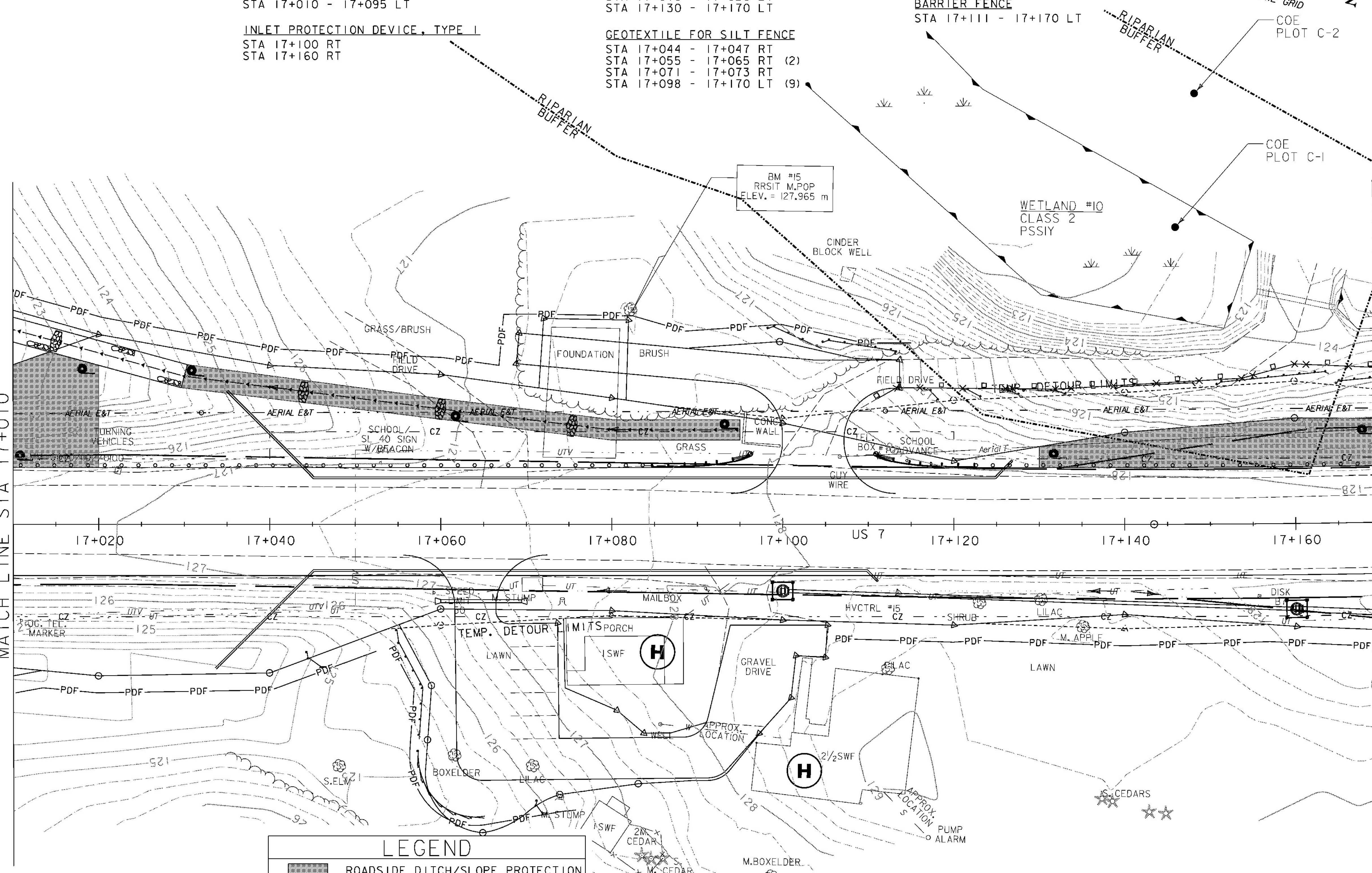
GEOTEXTILE FOR SILT FENCE  
 STA 17+044 - 17+047 RT  
 STA 17+055 - 17+065 RT (2)  
 STA 17+071 - 17+073 RT  
 STA 17+098 - 17+170 LT (9)

PROJECT DEMARCATION FENCE  
 STA 17+010 - 17+115 LT  
 STA 17+010 - 17+077 RT  
 STA 17+106 - 17+170 RT

BARRIER FENCE  
 STA 17+111 - 17+170 LT

MATCH LINE STA 17+010

MATCH LINE STA 17+170



**LEGEND**

- ROADSIDE DITCH/SLOPE PROTECTION
- DETOUR SLOPE LIMITS
- PERMANENT SLOPE LIMITS
- SILT FENCE
- INLET PROTECTION DEVICE, TYPE I
- PIPE INLET PROTECTION
- EROSION MATTING
- CHECK DAM - TEMPORARY
- BARRIER FENCE
- PROJECT DEMARCATION FENCE
- FILTER CURTAIN

**NOTES:**

1. SILT FENCE LOCATIONS SHOWN ON THIS DRAWING ARE APPROXIMATE. THE CONTRACTOR IS RESPONSIBLE FOR INSTALLING THE SILT FENCE IN ACCORDANCE WITH THE GUIDELINES SET FORTH IN THE VERMONT GENERAL PERMIT FOR STORMWATER RUNOFF FROM CONSTRUCTION SITES. THE RESIDENT ENGINEER AND ON SITE COORDINATOR SHALL APPROVE ALL SILT FENCE LOCATIONS PRIOR TO PLACEMENT.
2. FOR EROSION PREVENTION AND SEDIMENT CONTROL PLAN GENERAL NOTES, SEE SHEETS 147 - 148, AND DETAILS, SEE SHEETS 177 - 180.



**EROSION CONTROL PLAN 5**

PROJECT NAME: BRANDON	
PROJECT NUMBER: NH 019-3(495)	
FILE NAME: zb008s5-ec05.dgn	PLOT DATE: 9/3/2009
PROJECT LEADER: CRB	DRAWN BY: NLL
DESIGNED BY: NLL	CHECKED BY: PTS
CLD 02-0149	SHEET 153 OF 546