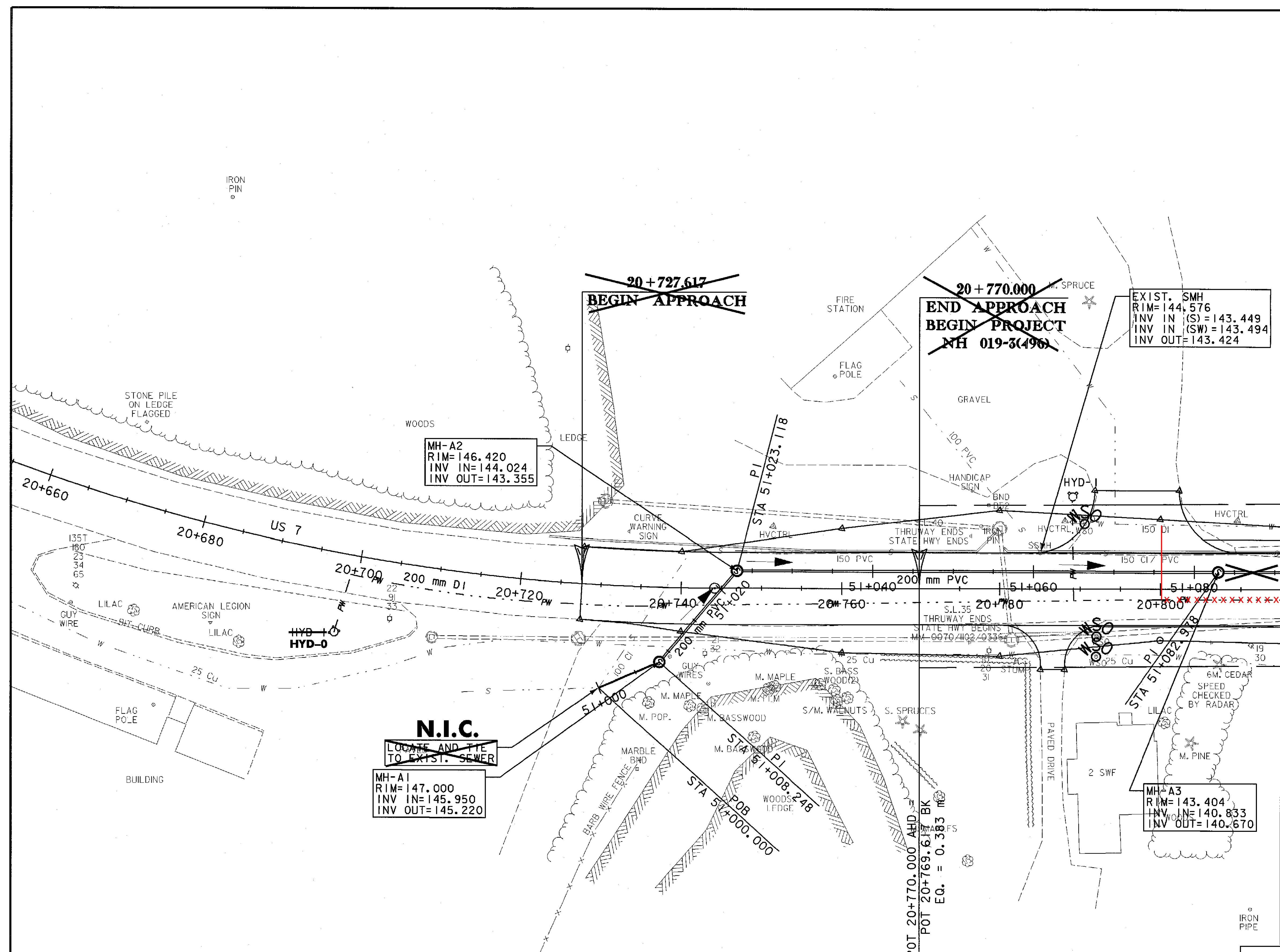


NOTE TO CONTRACTOR
SEWER CONSTRUCTION - SEWER MANHOLES A1, A2, A3 AND PIPE BETWEEN THESE MANHOLES AND SERVICE CONNECTIONS TO THE EDGE OF PAVEMENT SHALL BE INSTALLED IN THE DRY AS DETAILED IN THE PLANS IS PART OF CONTRACT NH 019-3(495). CONNECTIONS TO EXISTING SERVICES AND SANITARY SEWER SYSTEM WILL BE MADE UNDER BRANDON NH 019-3(496).

WATER CONSTRUCTION - WATER LINE BETWEEN HYD-0 AND STA. 20+800 SHALL BE INSTALLED IN THE DRY AS DETAILED IN THE PLANS. SERVICE CONNECTIONS TO THE EDGE OF PAVEMENT WILL BE INSTALLED UNDER THIS CONTRACT. HYD-0 AND CONNECTIONS TO THE EXISTING WATER SYSTEM WILL BE MADE UNDER BRANDON NH 019-3(496).



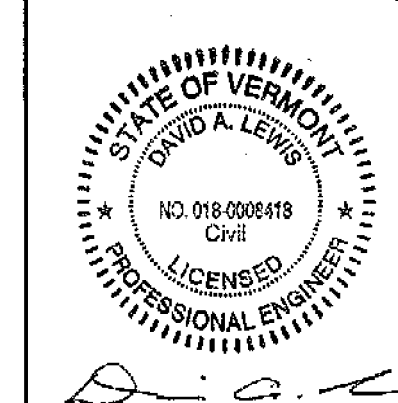
MATCH LINE 20+815

N.I.C.
 LOCATE AND TIE TO EXIST. SEWER

MH-A1
 RIM=147.000
 INV IN=145.950
 INV OUT=145.220

EXIST. SMH
 RIM=144.576
 INV IN (S)=143.449
 INV IN (SW)=143.494
 INV OUT=143.424

MH-A3
 RIM=143.404
 INV IN=140.833
 INV OUT=140.670



3	AUG. 2009	MODIFIED TO ADDRESS CONTRACT ADMINISTRATIONS COMMENTS
1	MAR. 2009	BRANDON SEGMENT 5 PLAN REVISIONS
WATER / SEWER PLAN 1		
PROJECT NAME: BRANDON		
PROJECT NUMBER: NH 019-3(496)		
FILE NAME: zb008s6-swr.dgn	PLOT DATE: 1/9/2006	
PROJECT LEADER: HJM	DRAWN BY: KLS	
DESIGNED BY: DAL	CHECKED BY: DAL	
SHEET 145 OF 546	DEC SHEET 167 OF 437	