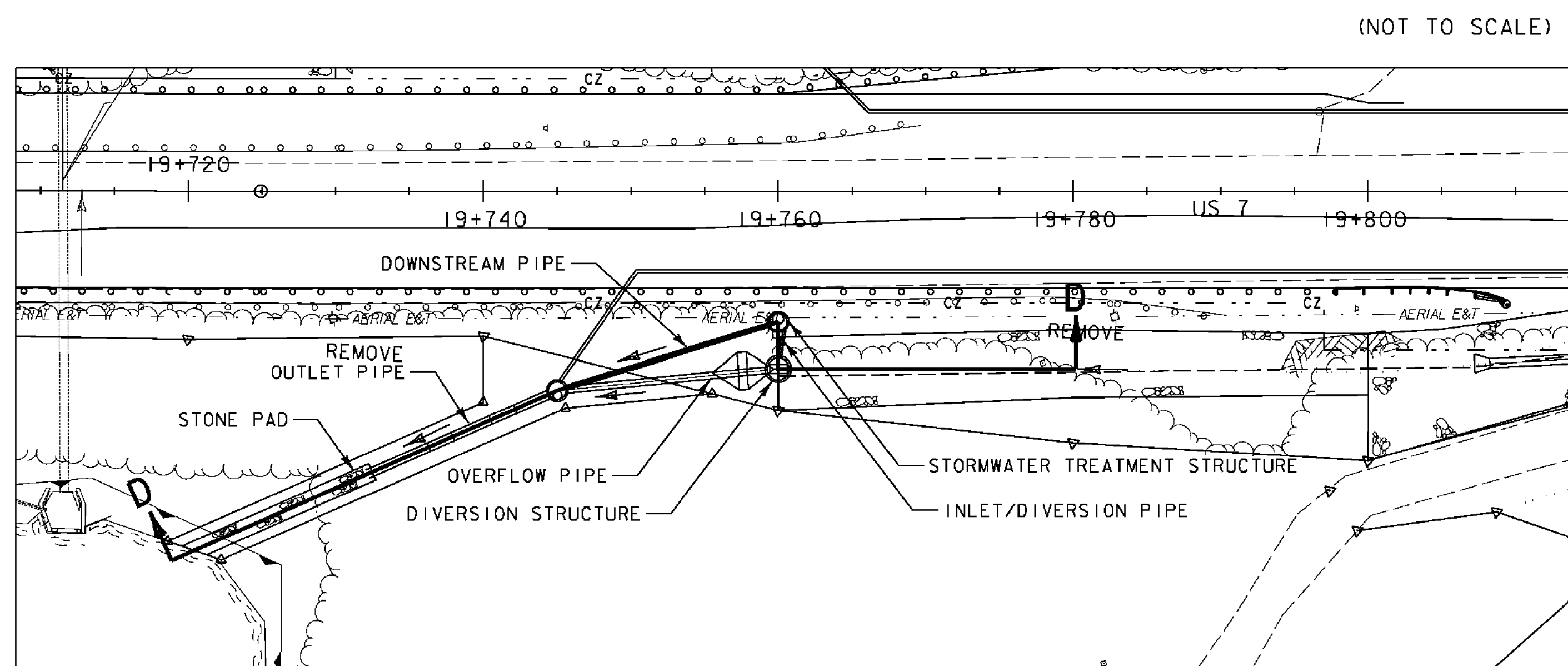
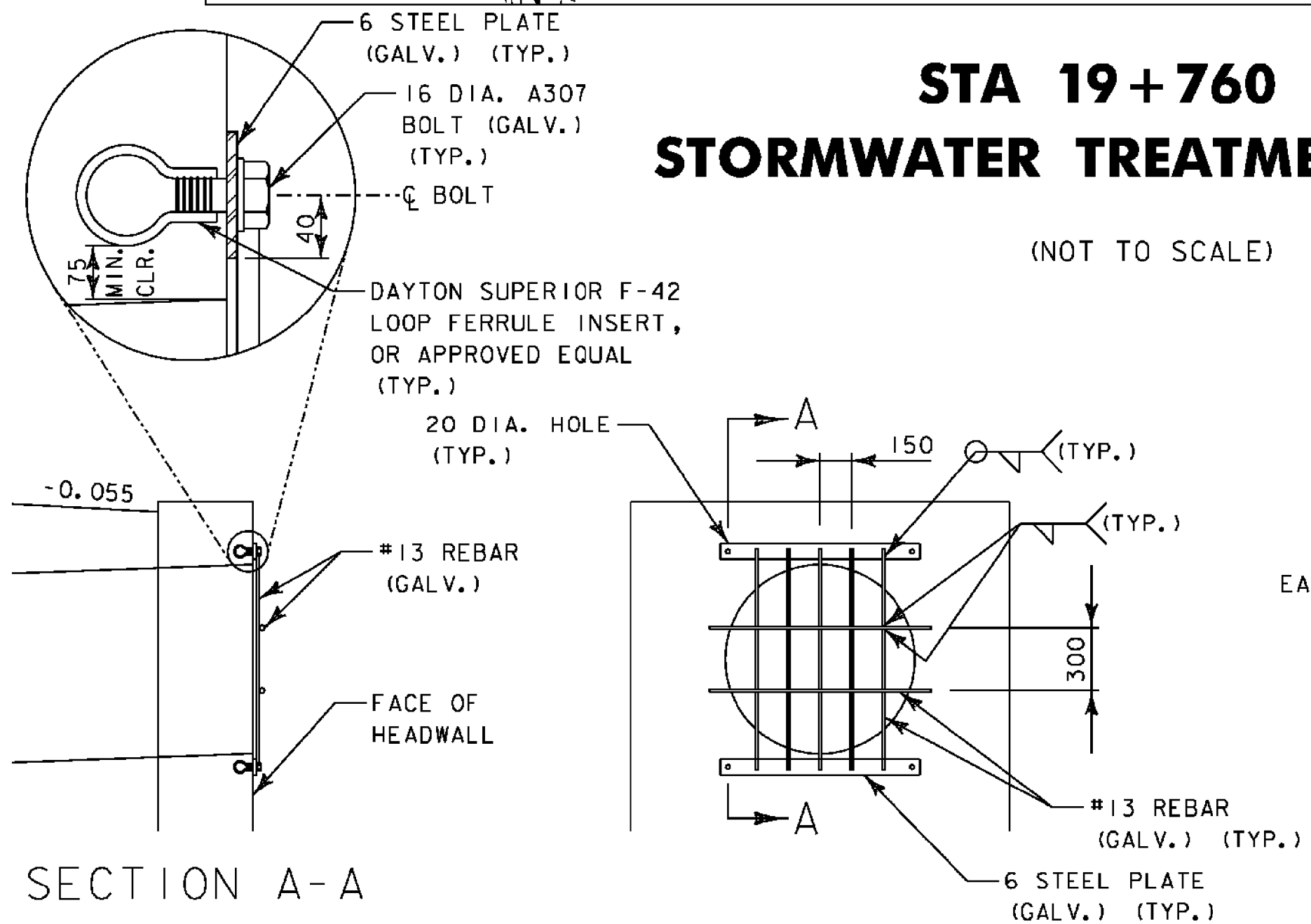


STORMWATER TREATMENT SYSTEM SECTION D-D



**STA 19+760 RT
STORMWATER TREATMENT SYSTEM**

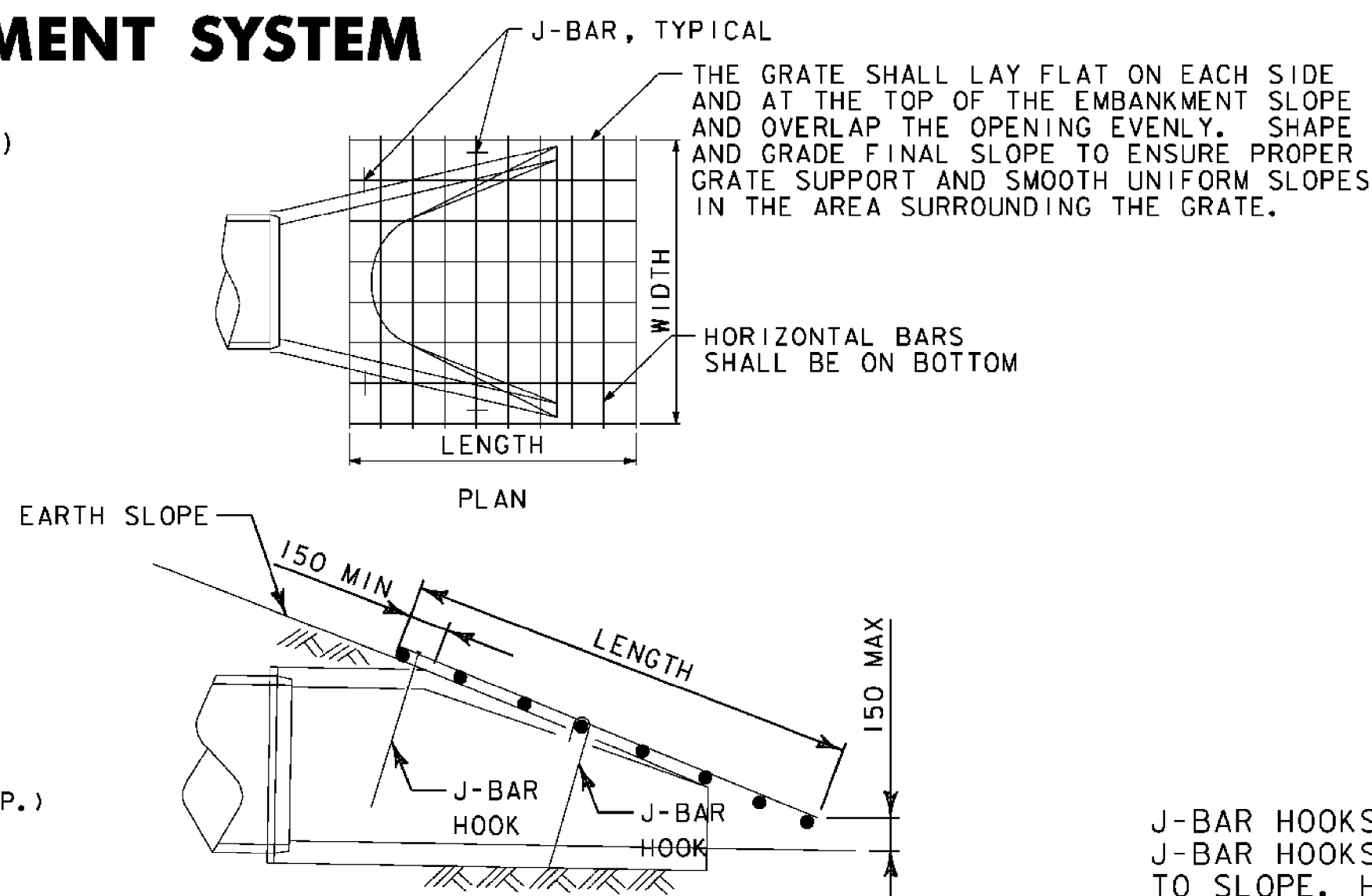
(NOT TO SCALE)



SECTION A-A

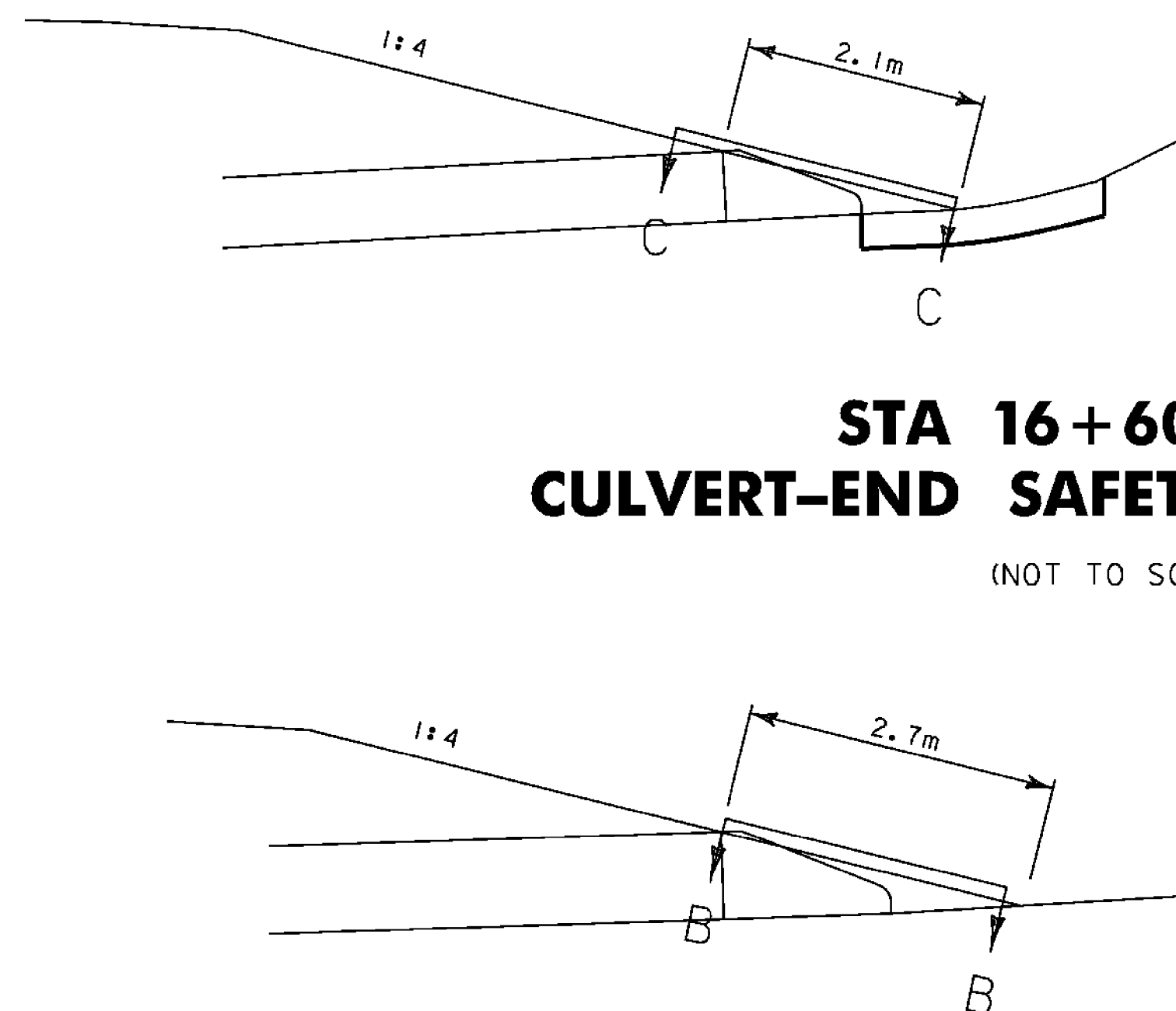
**STA 16+495.5 RT
CULVERT-END SAFETY GRATE DETAIL**

(NOT TO SCALE)



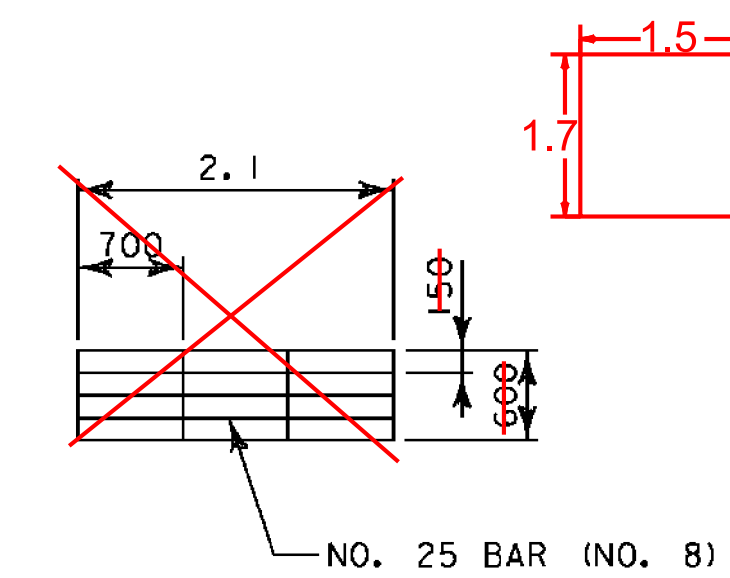
**REINFORCED CONCRETE END
SECTION SAFETY GRATE**

(NOT TO SCALE)



TYPICAL J-BAR HOOK

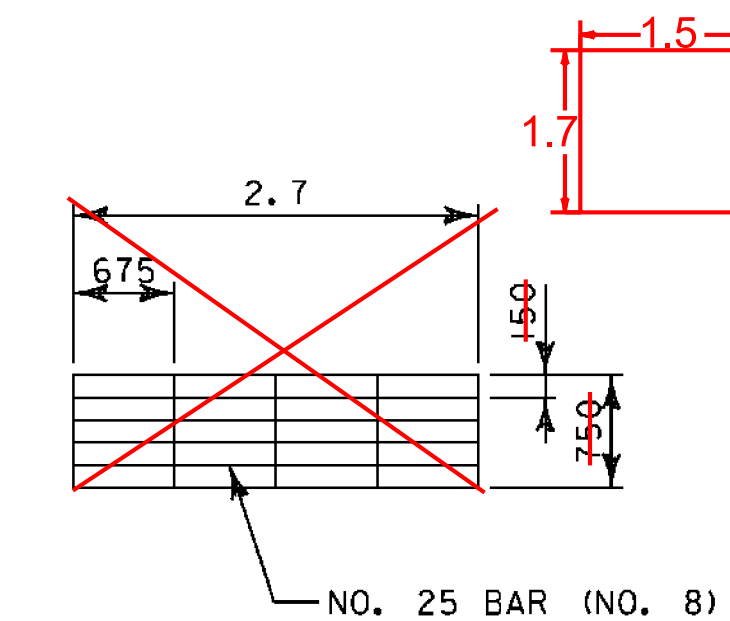
(NOT TO SCALE)



SECTION C-C

**STA 16+604.0 RT
CULVERT-END SAFETY GRATE DETAIL**

(NOT TO SCALE)



SECTION B-B

**STA 16+540.0 RT
CULVERT-END SAFETY GRATE DETAIL**

(NOT TO SCALE)

J-BAR HOOKS SHALL BE NO. 13 GALVANIZED. J-BAR HOOKS SHOWN INSTALLED PERPENDICULAR TO SLOPE. HOOKS MAY ALSO BE INSTALLED VERTICALLY. J-BAR SHALL BE WITH LONG LEGS ON THE DOWNHILL SIDE.

DRAINAGE DETAIL 3

PROJECT NAME: BRANDON	PLOT DATE: 9/3/2009
PROJECT NUMBER: NH 019-3(495)	DRAWN BY: NLL
FILE NAME: zb008s5-frml6.dgn	CHECKED BY: PTS
PROJECT LEADER: CRB	SHEET 137 OF 546
DESIGNED BY: DAM	
CLD 02-0149	