

CONSTRUCT DRIVES

STA 19+450.5 LT - 6.5 m WIDE, GRAVEL-RES.
 STA 19+501.7 RT - 3.6 m WIDE, PAVED-RES.
 STA 19+520.0 LT - 7.2 m WIDE, PAVED-COMM.
 STA 19+540.0 RT - 7.0 m WIDE, PAVED-RES.

SPECIAL PROVISION
 (REMOVE COMMERCIAL SIGN)
 STA 19+502.0 LT

RELOCATE MAILBOX, MULTIPLE SUPPORT
 STA 19+440.0 LT

SPECIAL PROVISION (REMOVING AND RESETTING GROUND/ORNAMENTAL LIGHT ASSEMBLY)

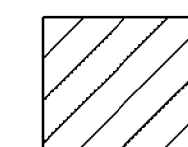
STA 19+504.2 LT TO 19+501.0 15.0m LT
 STA 19+513.8 LT TO 19+511.5 24.1m LT
 STA 19+527.1 LT TO 19+525.0 24.1m LT
 STA 19+540.5 LT TO 19+537.0 15.0m LT

REMOVAL OF EXISTING FENCE

STA 19+504.3 - 19+524.5 LT
 STA 19+527.6 - 19+540.2 LT

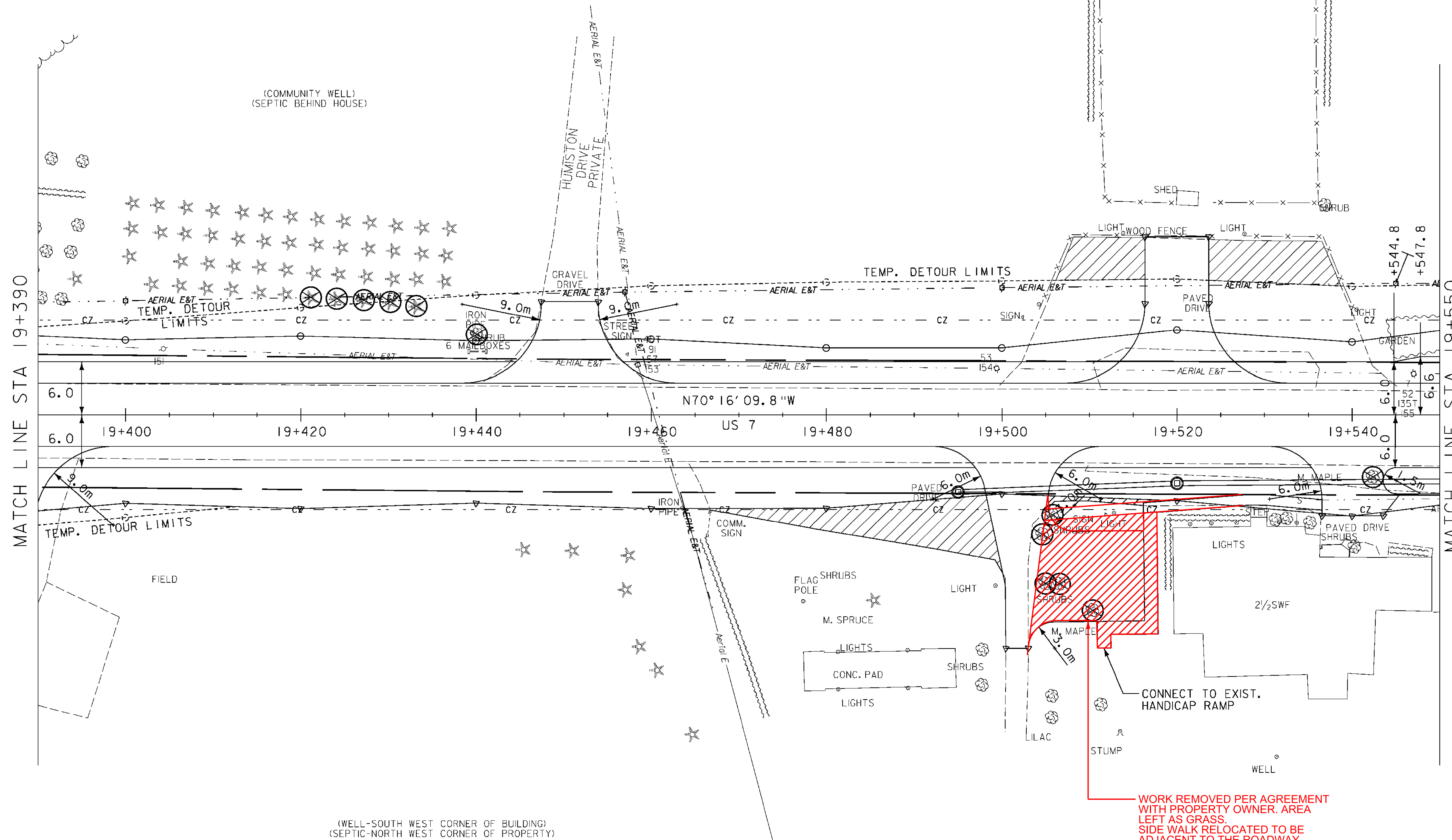
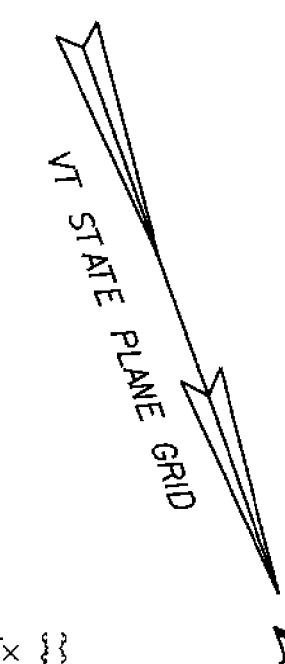
BITUMINOUS CONCRETE SIDEWALK

STA 19+510.9 - 19+536.6 RT
 MATCH TO EXISTING RAMP
 AT STA 19+510.9 AND STEPS
 AT STA 19+528.5



EXCAVATION OF SURFACES AND PAVEMENTS (PLACE 100mm TOPSOIL, SEED, FERTILIZER, LIMESTONE AND HAY MULCH)

STA 19+466.6 - 19+500.4 RT
 STA 19+505.3 - 19+519.4 RT
 STA 19+506.2 - 19+516.3 LT
 STA 19+523.7 - 19+538.7 LT



(WELL-SOUTH WEST CORNER OF BUILDING)
 (SEPTIC-NORTH WEST CORNER OF PROPERTY)

WORK REMOVED PER AGREEMENT
 WITH PROPERTY OWNER. AREA
 LEFT AS GRASS.
 SIDE WALK RELOCATED TO BE
 ADJACENT TO THE ROADWAY.

⊗ DENOTES TREE OR STUMP REMOVAL



ROADWAY LAYOUT 20

PROJECT NAME:	BRANDON
PROJECT NUMBER:	NH 019-3(495)
FILE NAME:	zb008s5-gen20.dgn
DESIGNED BY:	DAM
CLD 02-0149	
PLOT DATE:	9/3/2009
DRAWN BY:	NLL
CHECKED BY:	PTS
SHEET	106 OF 546