

**CONSTRUCT DRIVES**  
 STA 19+271.5 RT - 12.0 m WIDE, PAVED-COMM.  
 STA 19+386.0 RT - 7.2 m WIDE, PAVED-COMM.

**RELOCATE MAILBOX, SINGLE SUPPORT**  
 STA 19+304.2 RT

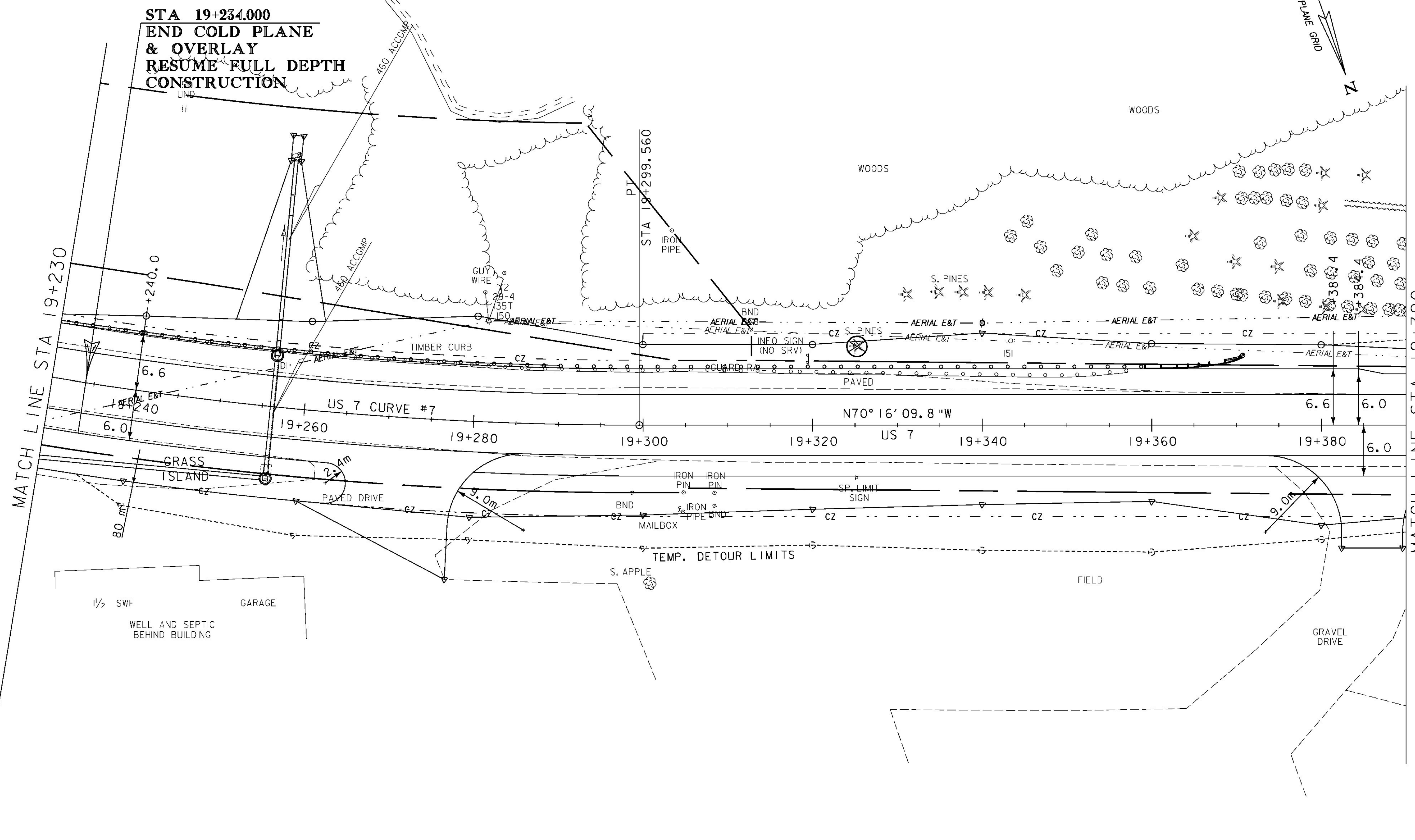
**REMOVAL AND DISPOSAL OF GUARDRAIL**  
 STA 19+230.0 - 19+357.2 LT

**COLD PLANING, BITUMINOUS CONCRETE PAVEMENT**  
 (TYPE 111S) (1-45 mm LIFT)  
 STA 19+230.0 - 19+234.0

**STEEL BEAM GUARDRAIL, GALVANIZED**  
 STA 19+230.0 - 19+359.2 LT  
 (CONNECT TO EXISTING AT STA 19+230.0 LT)

**MANUFACTURED TERMINAL SECTION, TANGENT**  
 STA 19+359.2 LT

**BITUMINOUS CONCRETE CURB, TYPE A**  
 STA 19+230.0 - 19+290.0 LT



⊗ DENOTES TREE OR STUMP REMOVAL



<b>ROADWAY LAYOUT 19</b>	
PROJECT NAME:	BRANDON
PROJECT NUMBER:	NH 019-3(495)
FILE NAME:	zb008s5-genl9.dgn
PROJECT LEADER:	CRB
DESIGNED BY:	DAM
CLD 02-0149	
PLOT DATE:	9/3/2009
DRAWN BY:	NLL
CHECKED BY:	PTS
	SHEET 104 OF 546