

CONSTRUCT DRIVES  
 STA 19+215.2 RT - 4.0 m WIDE, PAVED-COMM.  
 COLD PLANING, BITUMINOUS CONCRETE PAVEMENT  
 (TYPE IIIIS) (1-45 mm LIFT)  
 STA 19+070.0 - 19+230.0

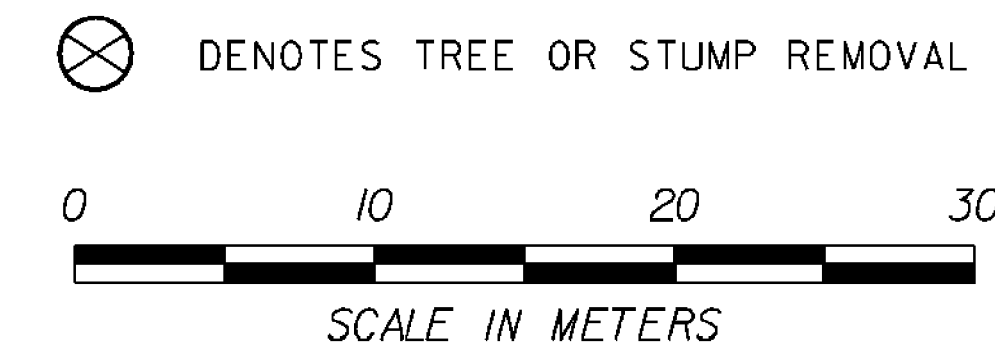
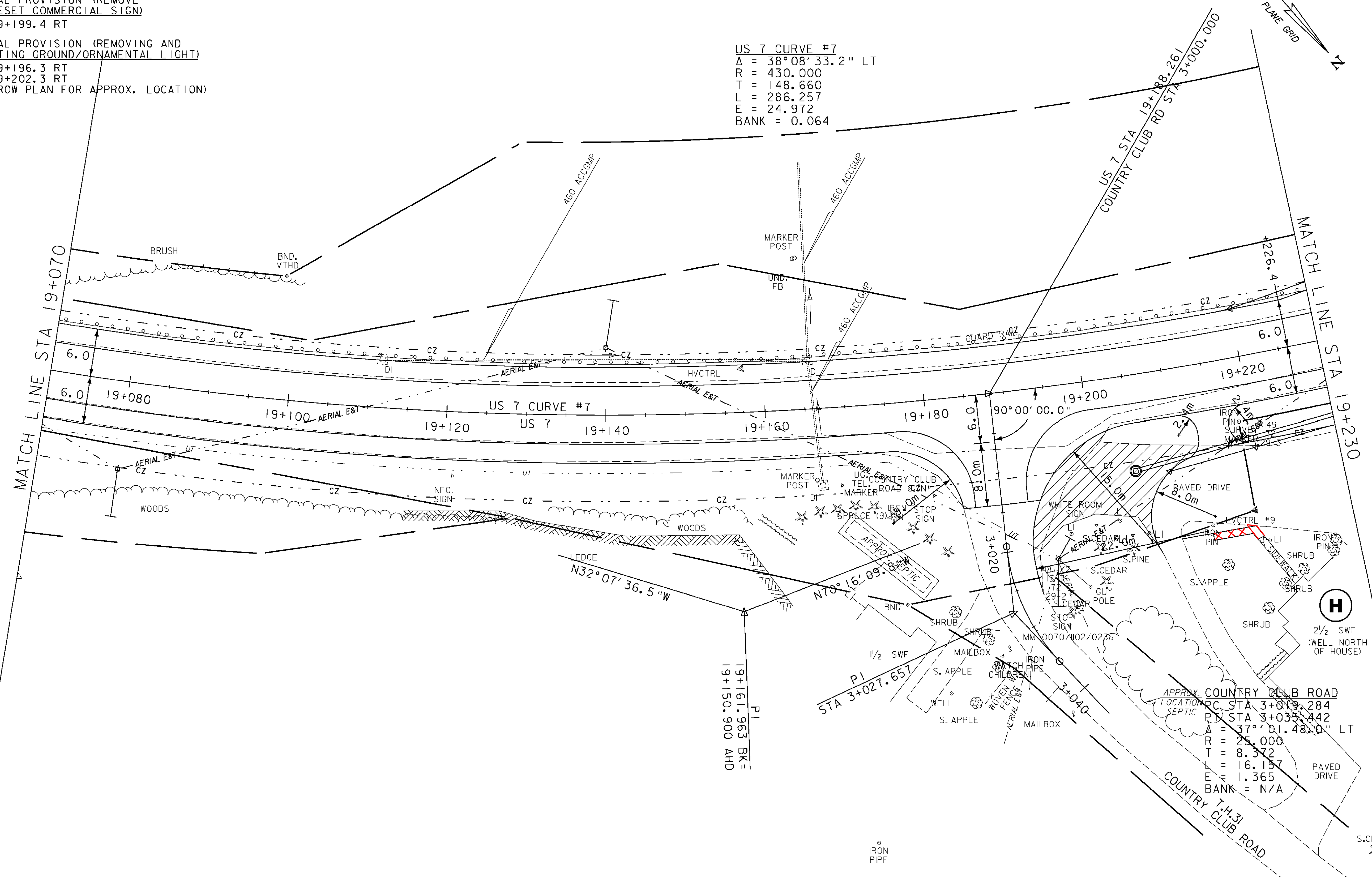
EXCAVATION OF SURFACES AND  
 PAVEMENTS (PLACE 100mm  
 TOPSOIL, SEED, FERTILIZER,  
 LIMESTONE AND HAY MULCH)  
 STA 3+026.7 LT - 19+213.1 RT

PORTLAND CEMENT CONCRETE SIDEWALK, 125 mm  
 STA 19+213.1 - 19+219.0 RT

SPECIAL PROVISION (REMOVE  
 AND RESET COMMERCIAL SIGN)  
 STA 19+199.4 RT

SPECIAL PROVISION (REMOVING AND  
 RESETTING GROUND/ORNAMENTAL LIGHT)  
 STA 19+196.3 RT  
 STA 19+202.3 RT  
 (SEE ROW PLAN FOR APPROX. LOCATION)

US 7 CURVE #7  
 $\Delta = 38^{\circ}08'33.2''$  LT  
 $R = 430.000$   
 $T = 148.660$   
 $L = 286.257$   
 $E = 24.972$   
 $BANK = 0.064$



PROJECT NAME:	BRANDON	FILE NAME:	zb008s5-genl8.dgn	PLOT DATE:	9/3/2009
PROJECT NUMBER:	NH 019-3(495)	PROJECT LEADER:	CRB	DRAWN BY:	NLL
		DESIGNED BY:	DAM	CHECKED BY:	PTS
		CLD 02-019		SHEET 102	OF 546

ROADWAY LAYOUT 18