

CONSTRUCT DRIVES
 STA 18+515.0 LT - 5.0 m WIDE, GRAVEL-RES.

WOVEN WIRE FENCE WITH WOOD POSTS
 STA 18+430.0 - 18+484.0 LT

WOOD BRACE FOR WOVEN WIRE FENCE
 STA 18+484.0 LT

REMOVAL OF EXISTING FENCE
 STA 18+430.0 - 18+484.0 LT

RELOCATE MAILBOX, SINGLE SUPPORT
 STA 18+520.5 LT

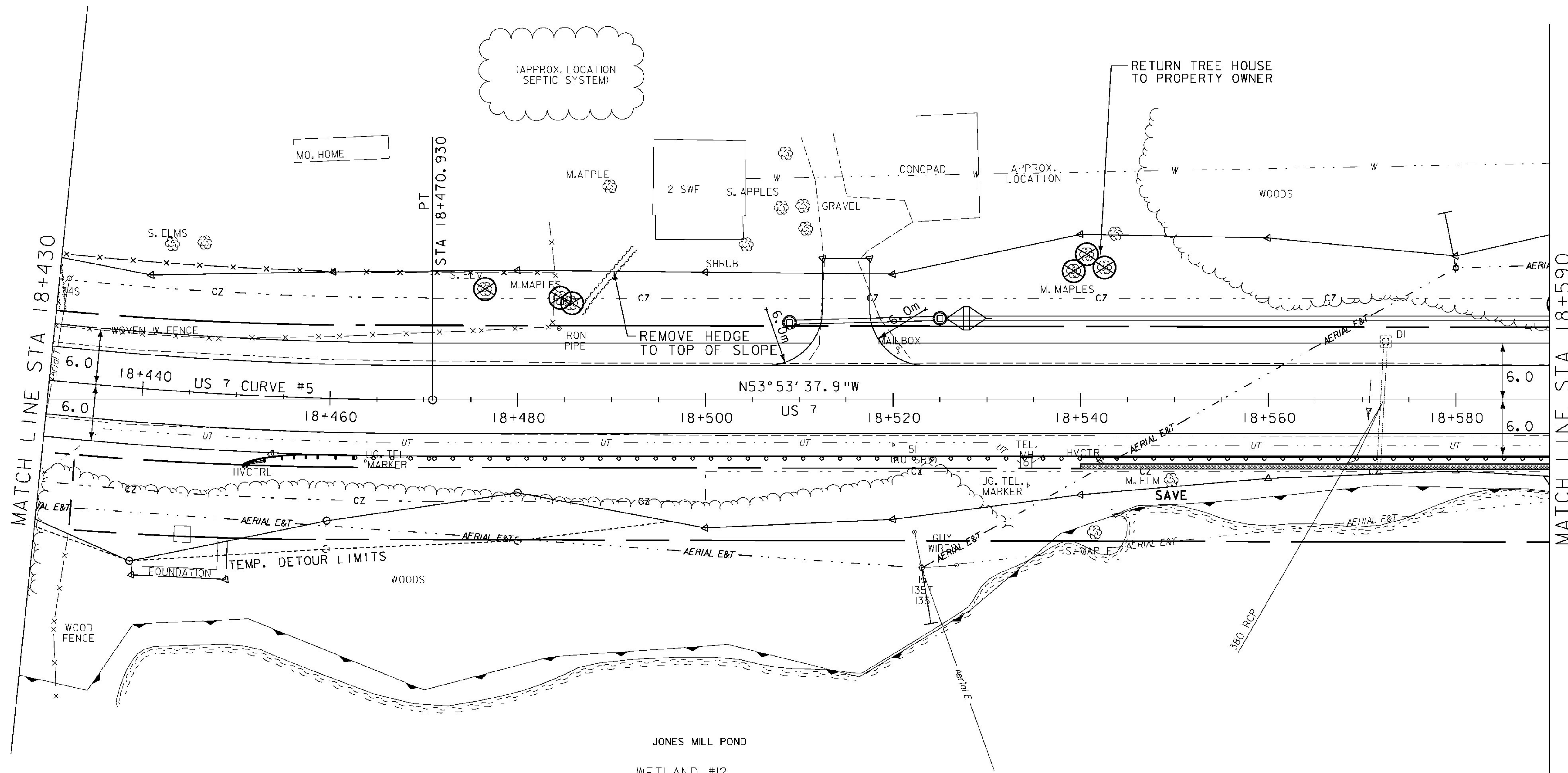
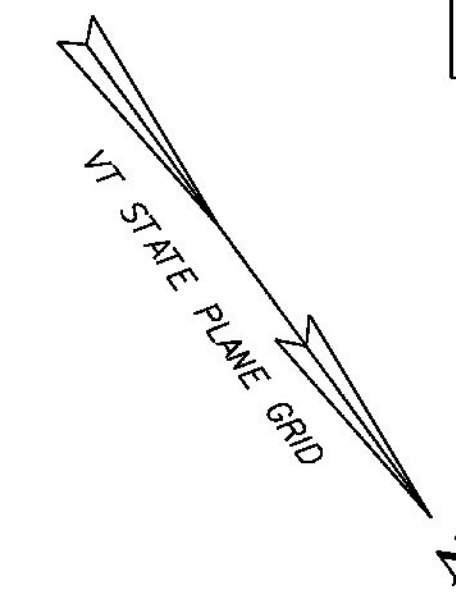
BITUMINOUS CONCRETE CURB, TYPE A
 STA 18+540.0 - 18+590.0 RT

SPECIAL PROVISION (PRECAST CONCRETE GEOGRID RETAINING WALL)
 STA 18+540.0 - 18+590.0 RT

STEEL BEAM GUARDRAIL, GALVANIZED
 STA 18+462.6 - 18+530.0 RT

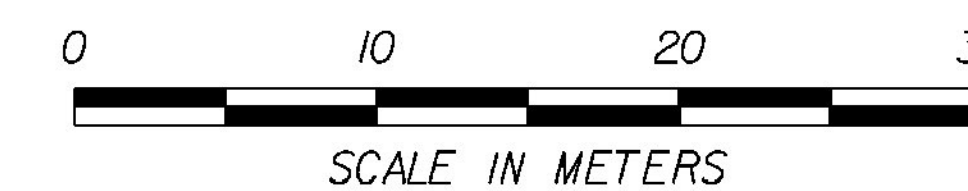
STEEL BEAM GUARDRAIL, GALVANIZED/NESTED W/2.4m POSTS
 STA 18+530.0 - 18+590.0 RT (SEE PRECAST CONCRETE GEOGRID RETAINING WALL DETAIL SHEET 4)

MANUFACTURED TERMINAL SECTION, TANGENT
 STA 18+462.6 RT



JONES MILL POND
 WETLAND #12
 CLASS 2
 PSSI/EMY

⊗ DENOTES TREE OR STUMP REMOVAL



ROADWAY LAYOUT 14

PROJECT NAME:	BRANDON	PLOT DATE:	9/3/2009
PROJECT NUMBER:	NH 019-3(495)	DRAWN BY:	NLL
FILE NAME:	zb008s5-genl4.dgn	CHECKED BY:	PTS
PROJECT LEADER:	CRB		
DESIGNED BY:	DAM		
CLD 02-0149			SHEET 94 OF 546