

CONSTRUCT DRIVES

STA 17+349.0 LT - 7.2 m WIDE, GRAVEL-COMM.
 STA 17+380.0 RT - 10.5 m WIDE, PAVED-COMM.
 STA 17+410.0 RT - 10.5 m WIDE, PAVED-COMM.
 STA 17+420.0 LT - 7.0 m WIDE, GRAVEL-RES.
 STA 17+465.0 RT - 10.5 m WIDE, PAVED-COMM.

RELOCATE MAILBOX, SINGLE SUPPORT

STA 17+367.0 RT
 STA 17+473.5 RT

GRANITE SLOPE EDGING (100mm)

STA 17+330.0 - 17+375.0 RT (ISLAND)
 STA 17+360.0 - 17+397.0 LT
 STA 17+385.5 - 17+405.0 RT
 STA 17+415.5 - 17+460.0 RT (ISLAND)
 STA 17+470.8 - 17+481.8 RT

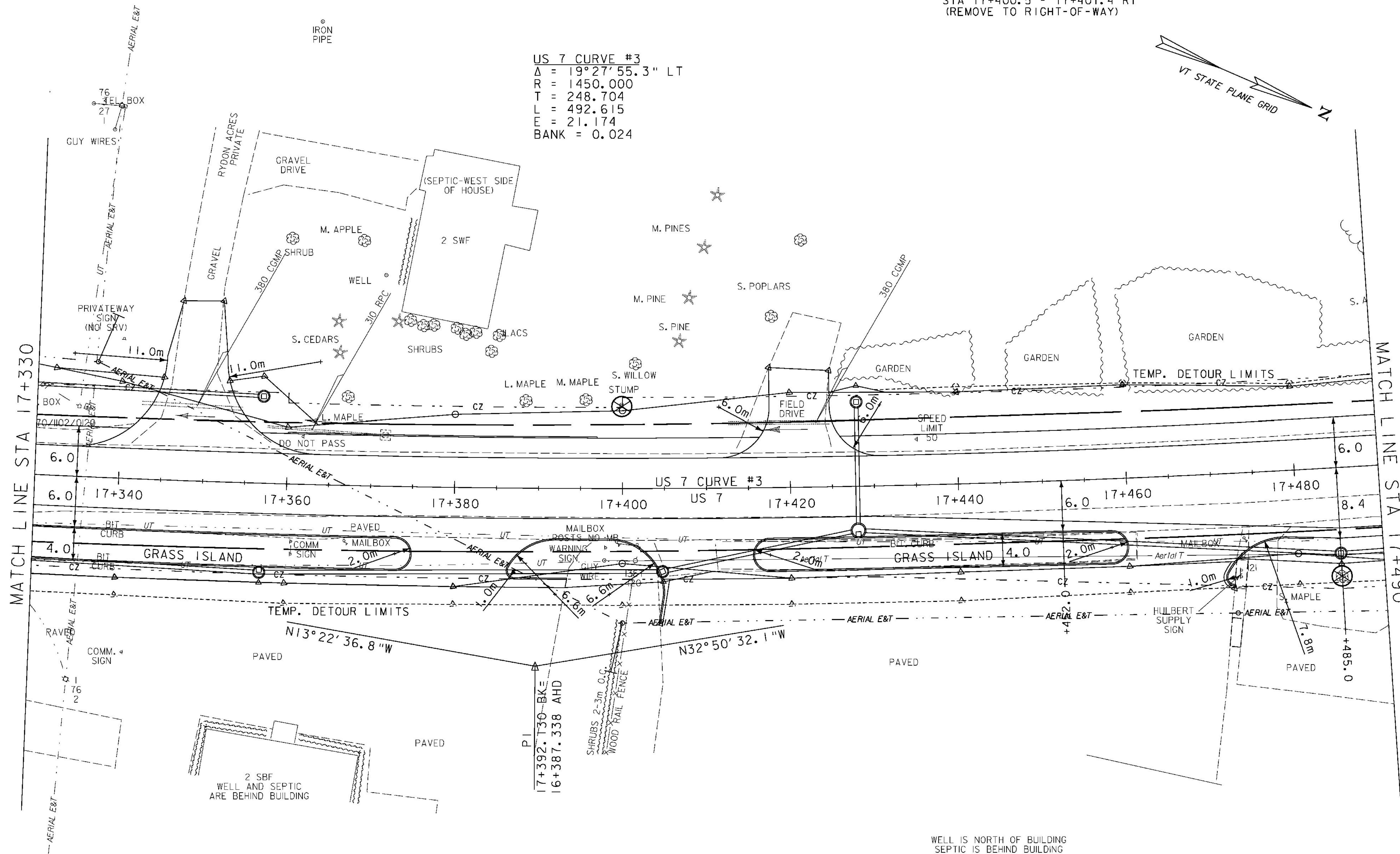
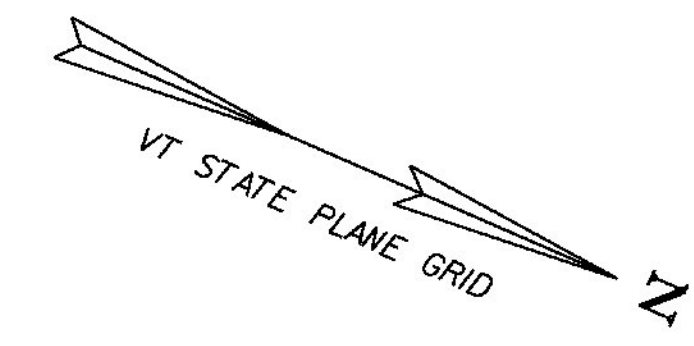
SPECIAL PROVISION (REMOVE AND RESET COMMERCIAL SIGN)

STA 17+360.0 RT
 SPECIAL PROVISION (REMOVE AND RESET COMMERCIAL SIGN WITH PLANTER)
 STA 17+473.0 RT

REMOVAL OF EXISTING FENCE

STA 17+400.5 - 17+401.4 RT
 (REMOVE TO RIGHT-OF-WAY)

US 7 CURVE #3
 $\Delta = 19^\circ 27' 55.3''$ LT
 $R = 1450.000$
 $T = 248.704$
 $L = 492.615$
 $E = 21.174$
 $BANK = 0.024$



⊗ DENOTES TREE OR STUMP REMOVAL



ROADWAY LAYOUT 7

| | | | |
|-----------------|-------------------|-------------|-----------------|
| PROJECT NAME: | BRANDON | PLOT DATE: | 9/3/2009 |
| PROJECT NUMBER: | NH 019-3(495) | DRAWN BY: | NLL |
| FILE NAME: | zb008s5-gen07.dgn | CHECKED BY: | PTS |
| PROJECT LEADER: | CRB | CLD 02-0149 | SHEET 80 OF 546 |
| DESIGNED BY: | DAM | | |