

GPS CONTROL POINTS

HVCTRL #1

Standard Disk Stamped

"GRIFFIN AZ MK 1997"
 NORTH = 143797.385
 EAST = 453448.005
 ELEV. = 153.690

TO REACH FROM THE INTERSECTION OF U.S.ROUTE 7 AND VT ROUTE 73 EAST IN BRANDON VILLAGE GO SOUTH ALONG U.S.ROUTE 7 FOR 0.5 MI (0.8 KM) TO THE MARK ON THE LEFT BETWEEN THE BRANDON AMERICAN LEGION POST AND THE SUSAN HAYDEN VETERINARY OFFICE. THE MARK IS SET FLUSH WITH GROUND SURFACE IN THE TOP OF A MASSIVE SLOPING ROCK OUTCROP ON THE WEST EDGE OF AN OLD QUARRY HOLE. IT IS 28.4 M (93.2 FT) EAST OF AND ABOUT 1.5 M (4.9 FT) HIGHER THAN THE CENTERLINE OF U.S.ROUTE 7, 5.3 M (17.4 FT) NORTH OF THE NORTHEAST CORNER OF THE VETERINARY OFFICE, 6.4 M (21.0 FT) NORTHEAST OF THE NORTHWEST CORNER OF THE OFFICE, 39.5 M (129.6 FT) SOUTH OF THE SOUTHWEST CORNER OF THE AMERICAN LEGION POST, 1.4 M (4.6 FT) WEST OF THE WEST FACE OF A STONE BLOCK WALL ON THE WEST EDGE OF THE QUARRY HOLE, AND 0.6 M (2.0 FT) WEST OF A FIBERGLASS WITNESS POST.

HVCTRL #2

Standard Disk Stamped

"GRIFFIN 1997"
 NORTH = 144202.525
 EAST = 453125.416
 ELEV. = 132.867

TO REACH FROM THE INTERSECTION OF U.S.ROUTE 7 AND VT ROUTE 73 EAST IN BRANDON VILLAGE GO SOUTH ALONG U.S.ROUTE 7 FOR 0.2 MI (0.3 KM) TO THE MARK ON THE LEFT IN A LAWN IN FRONT OF HOUSE NO.36 (GRIFFIN). THE MARK IS SET 10 CM BELOW GROUND SURFACE IN THE TOP OF A 30 CM DIAMETER CONCRETE MONUMENT. IT IS 10.0 M (32.8 FT) NORTHEAST OF AND ABOUT LEVEL WITH THE CENTERLINE OF U.S.ROUTE 7, 9.5 M (31.2 FT) WEST OF THE WEST SCREEN PORCH CORNER OF HOUSE NO.36, 5.7 M (18.7 FT) SOUTH SOUTHEAST OF THE SOUTH CORNER OF HOUSE NO.34, 0.6 M (2.0 FT) SOUTHEAST OF A HEAVY WOOD RAIL FENCE, AND 8.6 M (28.2 FT) EAST OF POLE NO. 13/10/10 AND A FIBERGLASS WITNESS POST.

HVCTRL

Standard Disk Stamped

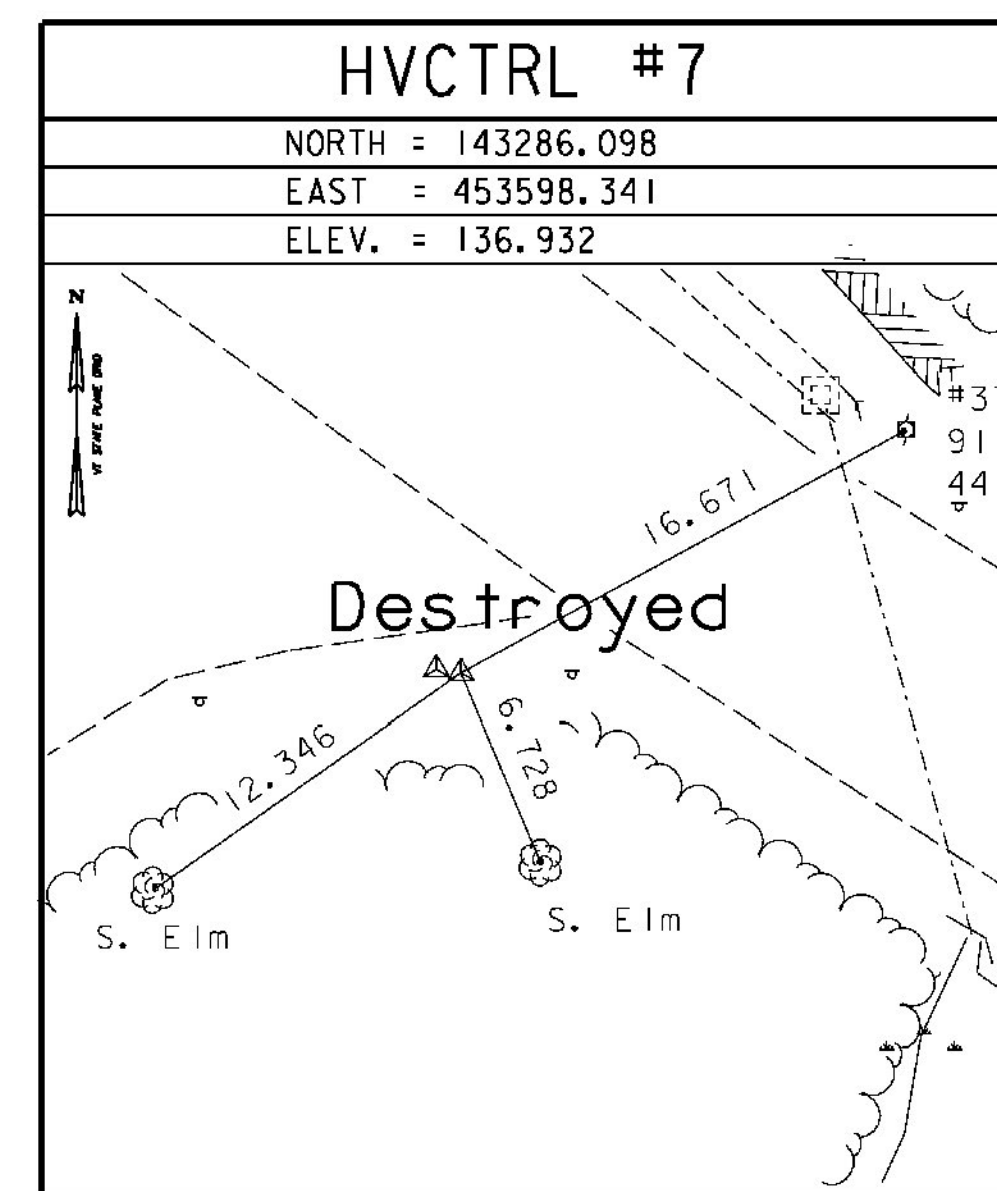
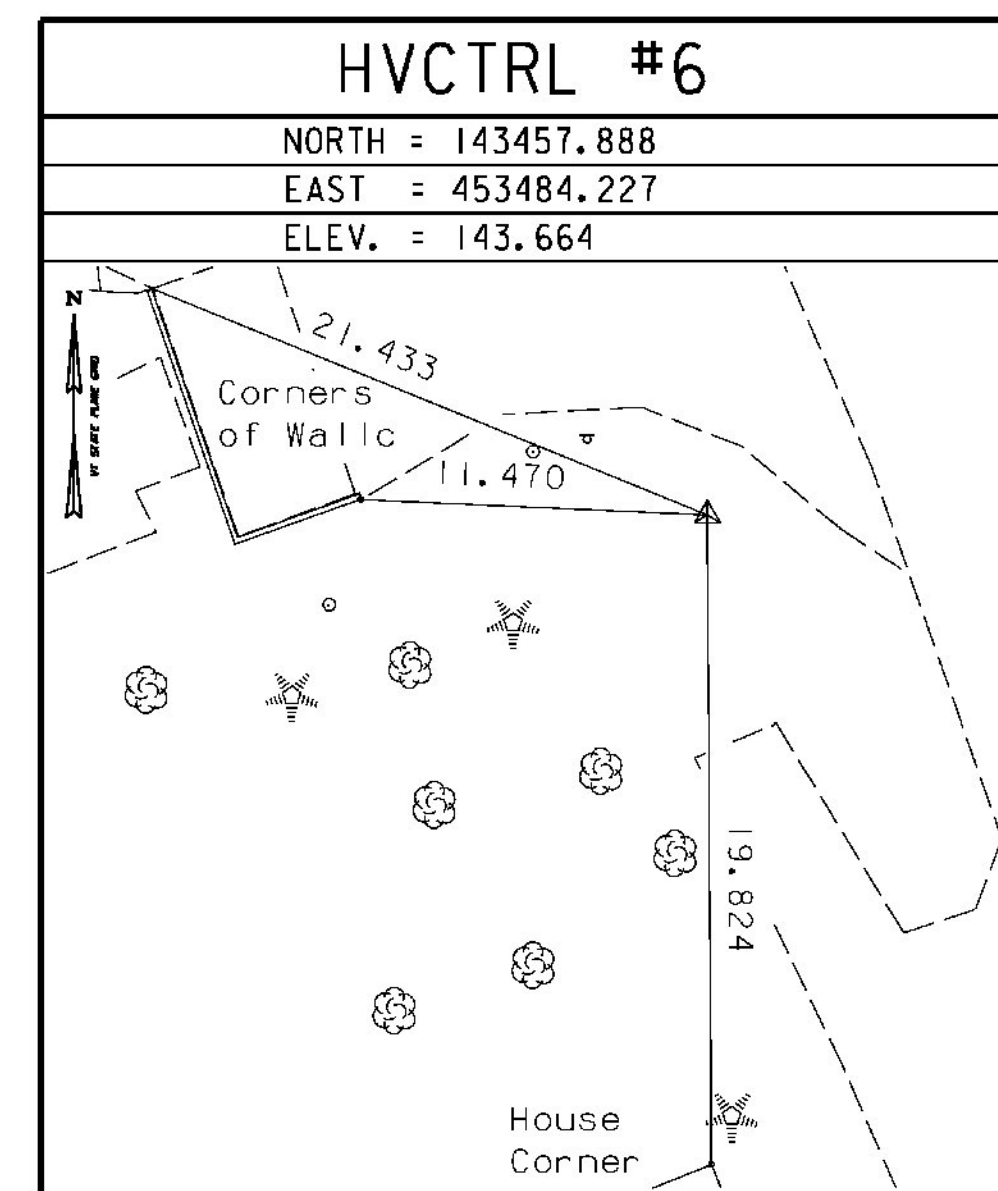
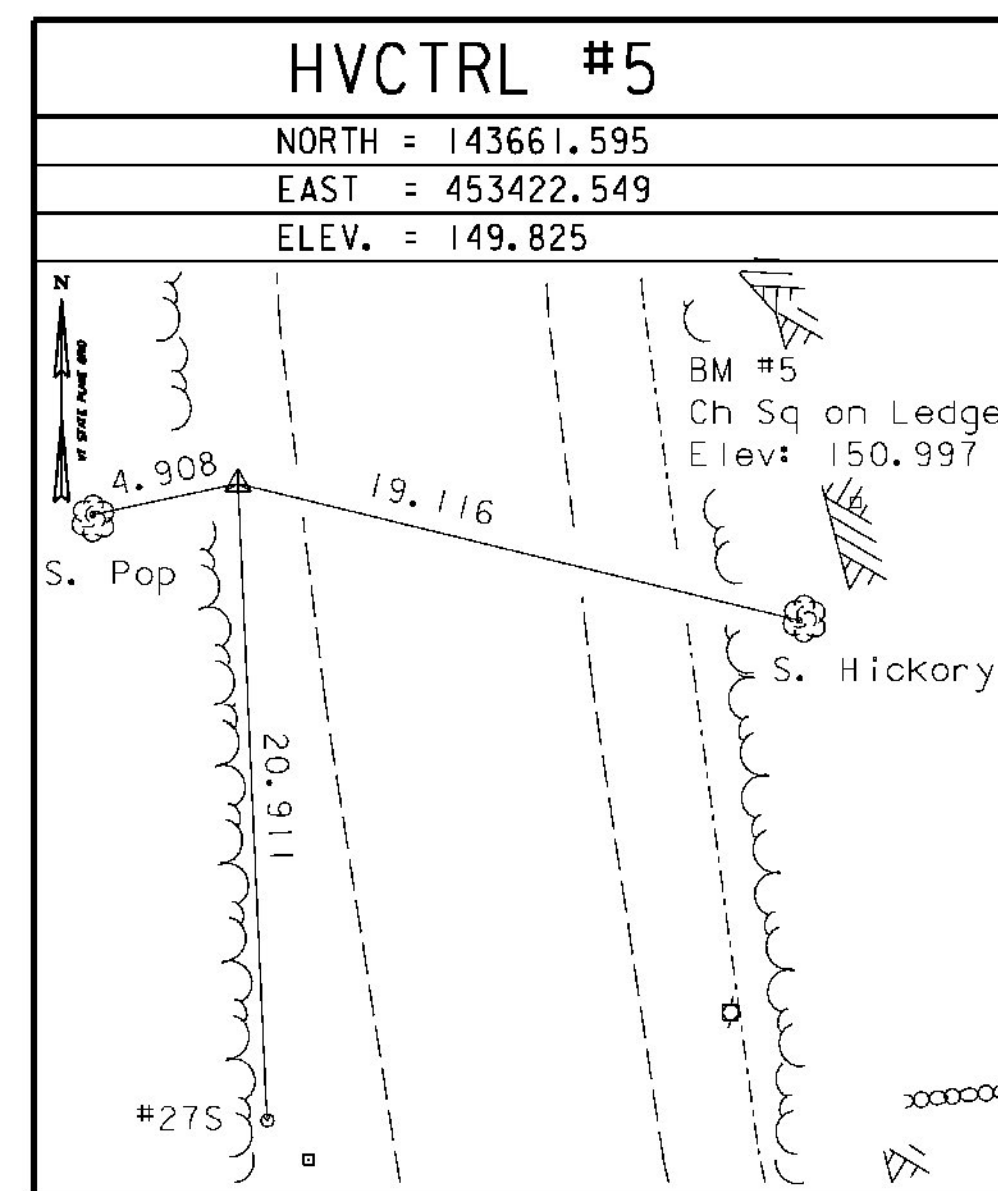
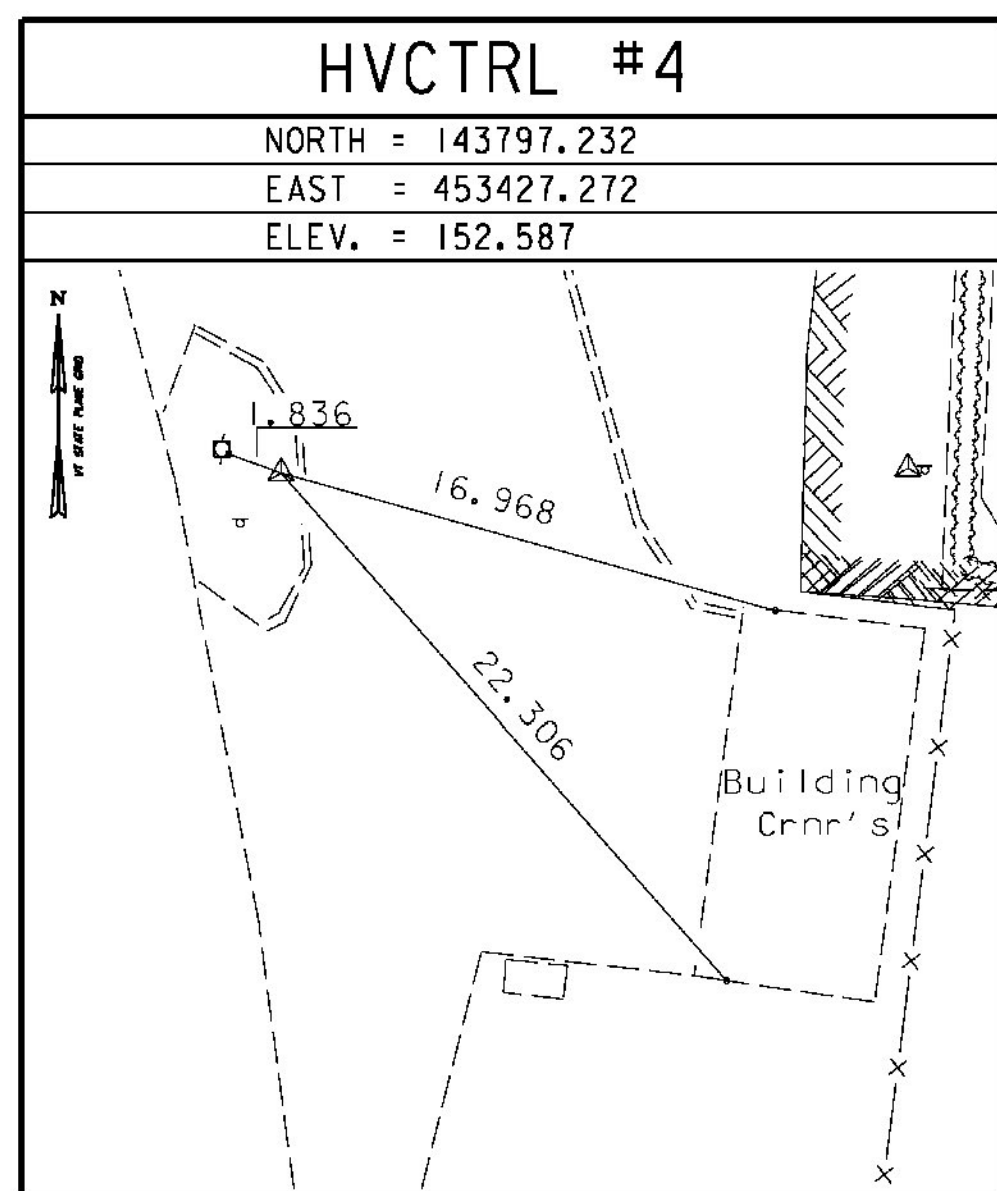
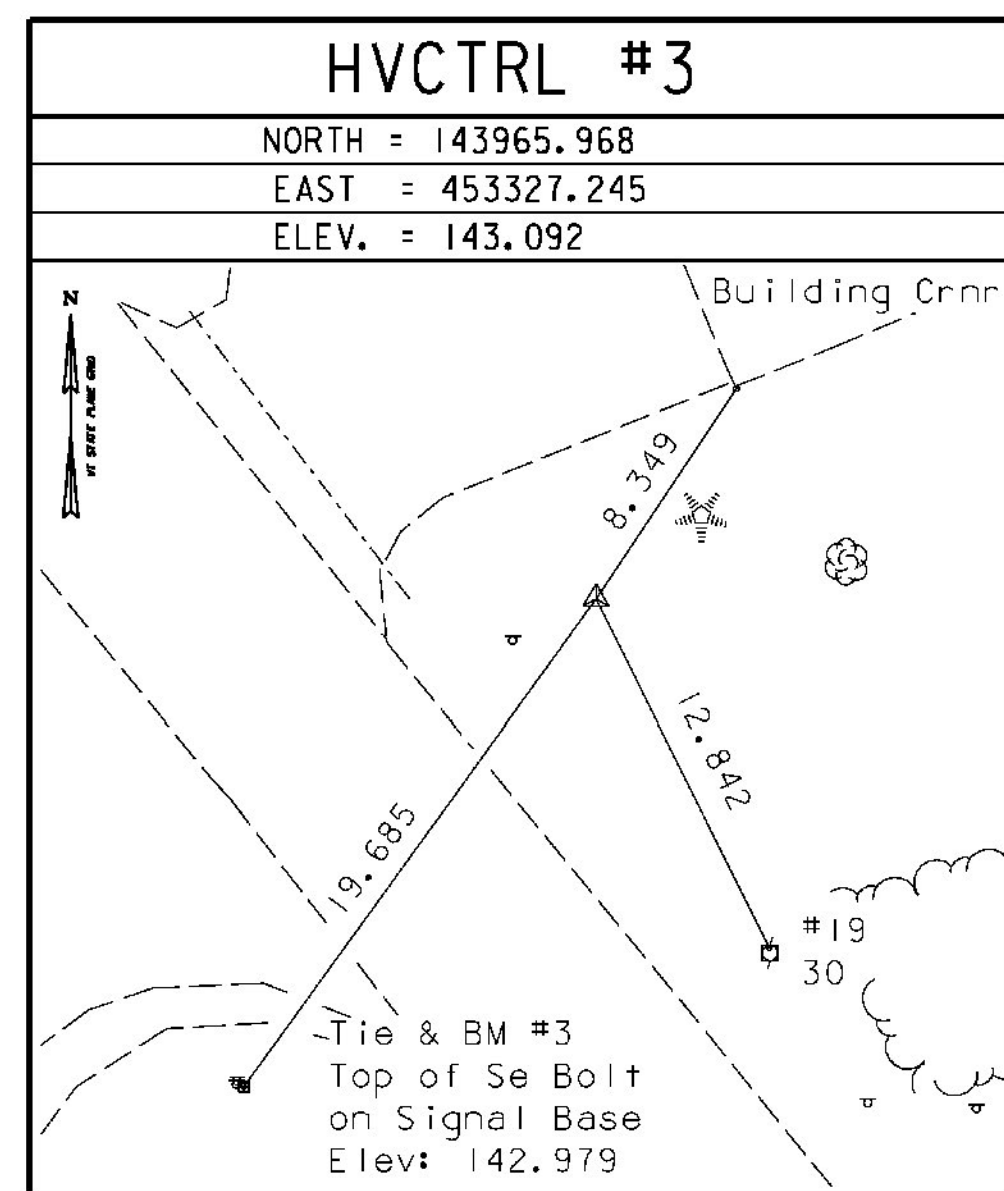
"Brandon 1935"
 NORTH = 144366.053
 EAST = 452709.212
 ELEV. = 131.166

TO REACH FROM THE INTERSECTION OF U.S. ROUTE 7 AND VT ROUTE 73 EAST IN BRANDON GO NORTH ALONG U.S. ROUTE 7 FOR 0.05 MI (0.08 KM) TO INTERSECTION OF UNION STREET LEFT AND THE SITE OF THE MARK IN THE VILLAGE PARK. THE MARK IS SET IN THE TOP OF A 30 CM SQUARE CONCRETE MONUMENT PROJECTING ABOUT 40 CM ABOVE GROUND SURFACE. IT IS AT ABOUT THE CENTER OF THE SOUTHWEST SIDE OF THE WEST HALF OF THE VILLAGE PARK. IT IS 23.4 M (76.8 FT) SOUTH OF THE CENTERLINE OF U.S. ROUTE 7, 8.8 M (28.9 FT) EAST OF THE CENTERLINE OF UNION STREET, 10.8 M (35.4 FT) SOUTH OF A POLE, AND 1.8 M (5.9 FT) NORTH OF AN 8 CM MAPLE. NOTE, MARK IS SUITABLE FOR GPS OBSERVATIONS WHEN FOLIAGE IS GONE.



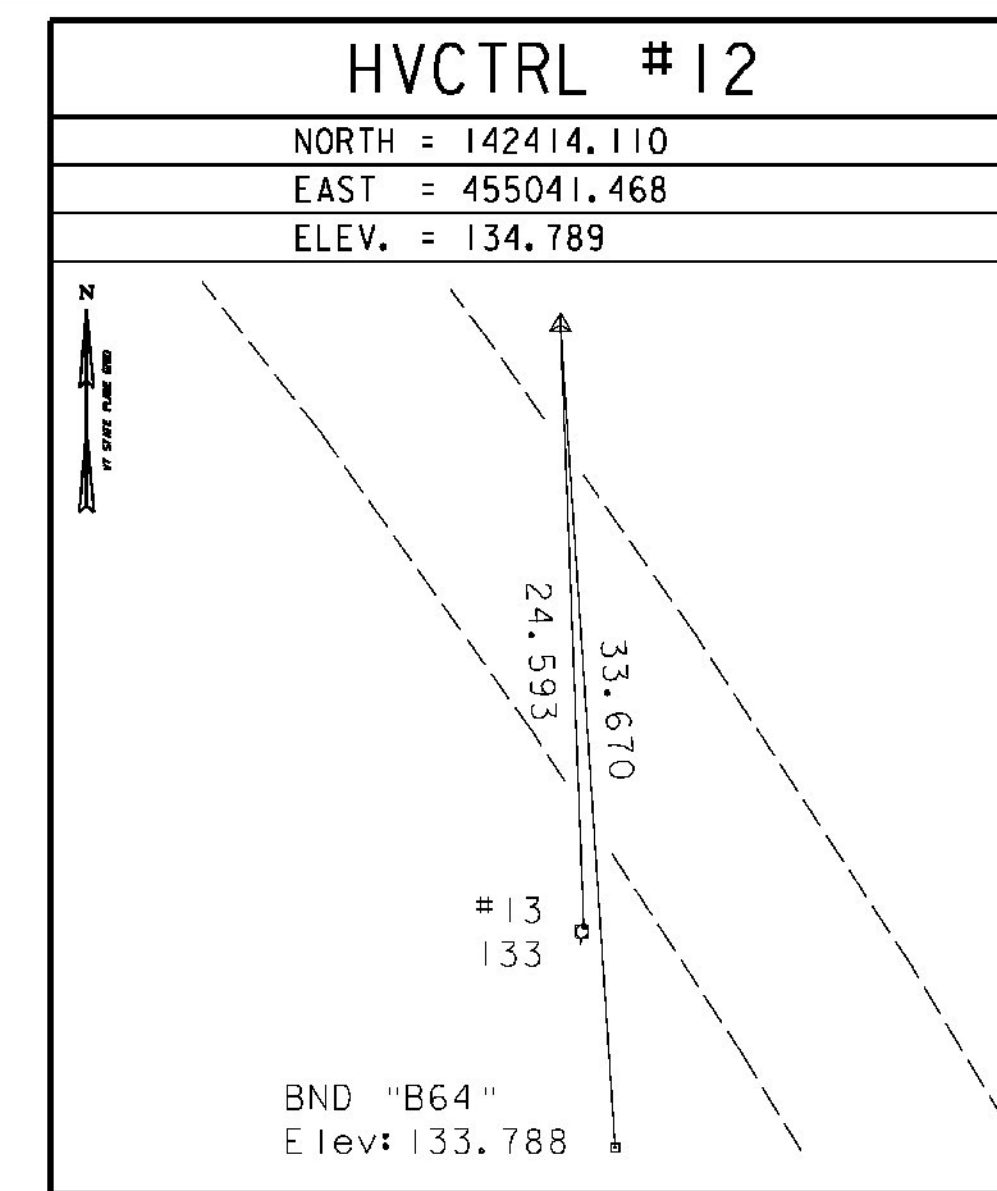
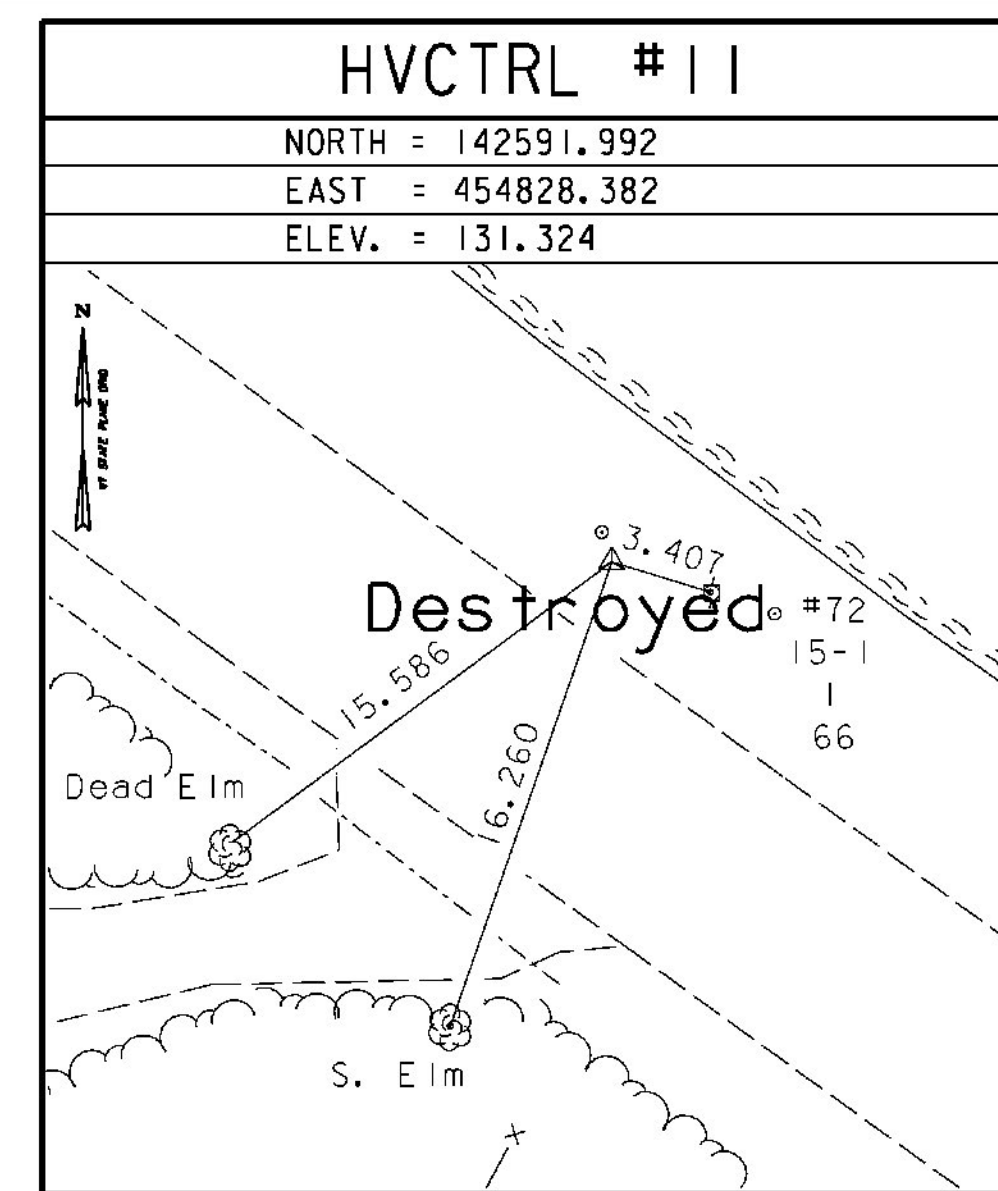
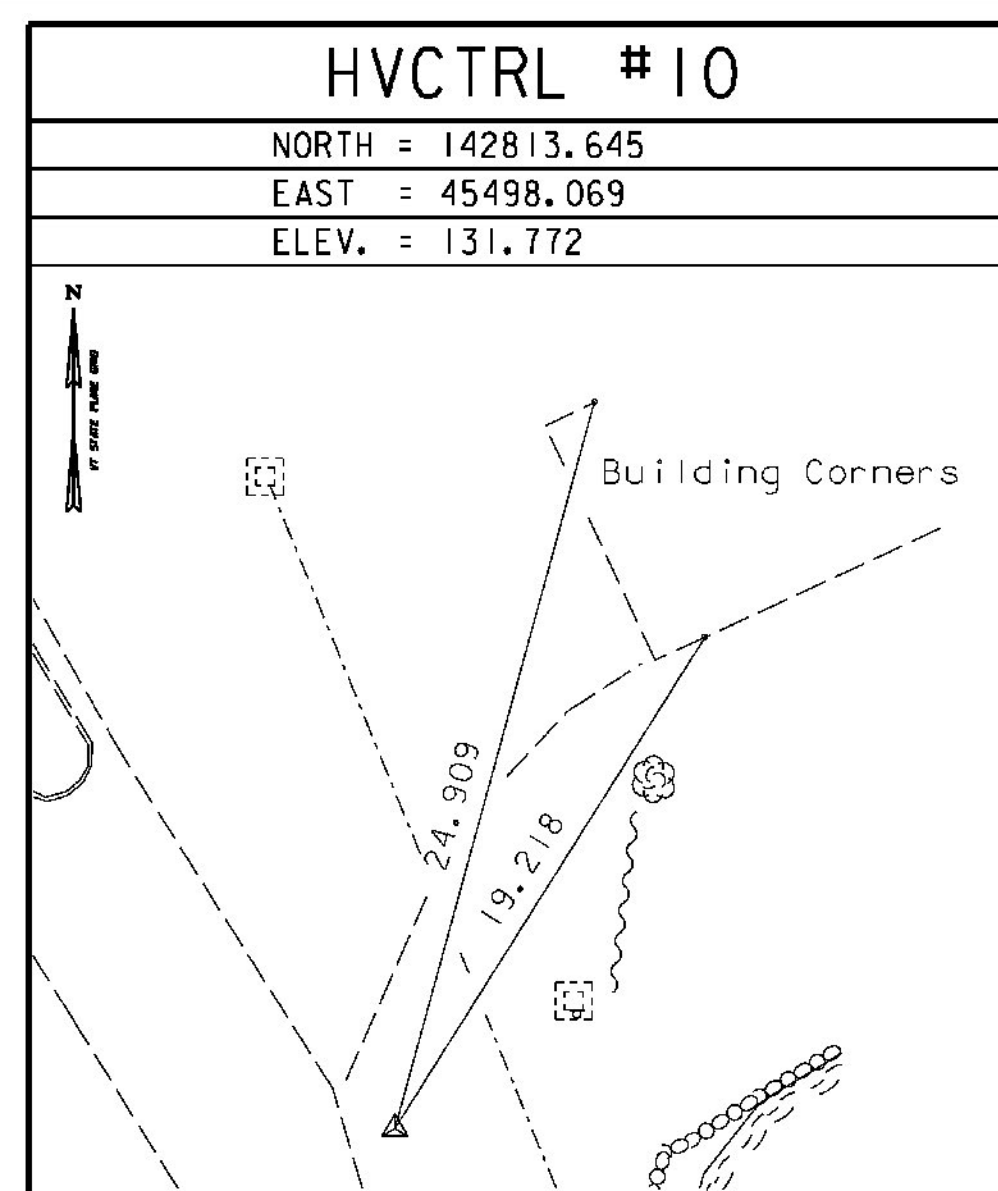
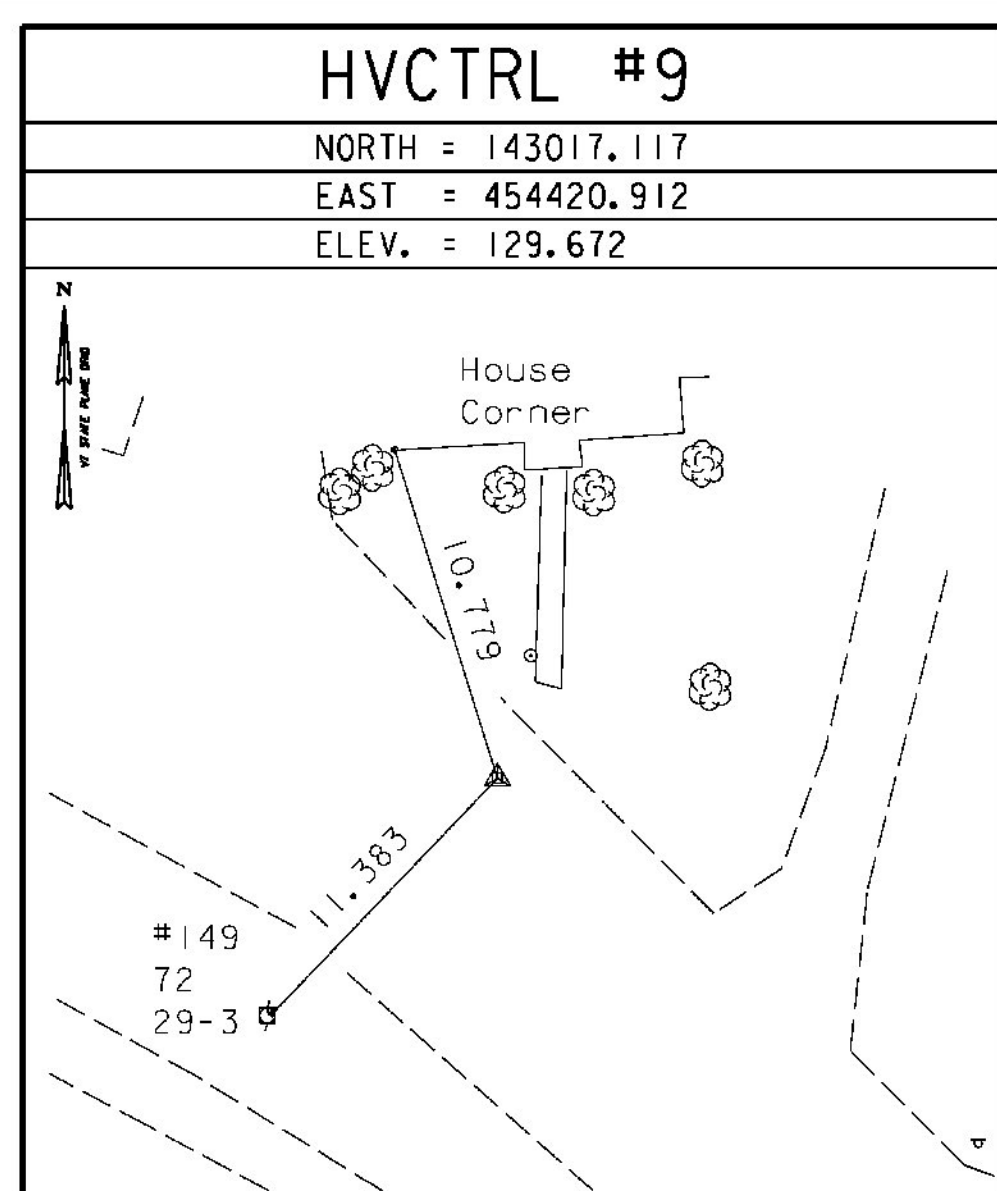
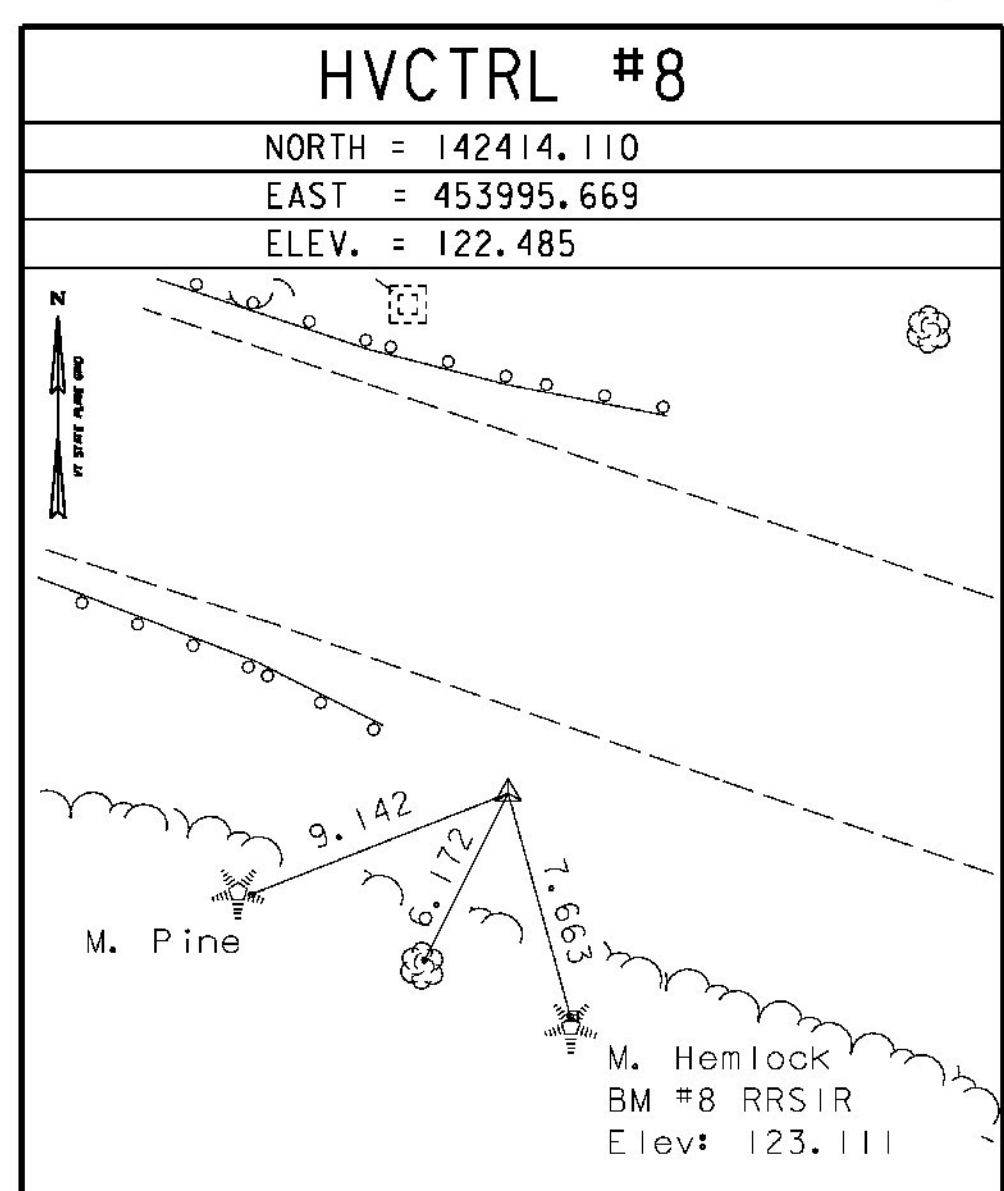
• Description provided by Vermont Agency of Transportation Geodetic Survey Unit

TRAVERSE TIES



• Main Traverse Completed 01/26/98 by L.Orvis P.C. & R. Bullock

TRAVERSE TIES



TIE SHEET

DATUM	
VERTICAL	NAVD 88
HORIZONTAL	NAD 83/92
ADJUSTMENT	Least Squares

PROJECT NAME:	BRANDON
PROJECT NUMBER:	NH 019-3(495)
FILE NAME:	x85b008s5-t101.dgn
PROJECT LEADER:	VAOT
DESIGNED BY:	VTRANS
CLD 02-0149	
PLOT DATE:	9/3/2009
DRAWN BY:	R. Bullock
CHECKED BY:	VTRANS
SHEET	65 OF 546

NOTE: ALL TIE DISTANCES IN METERS