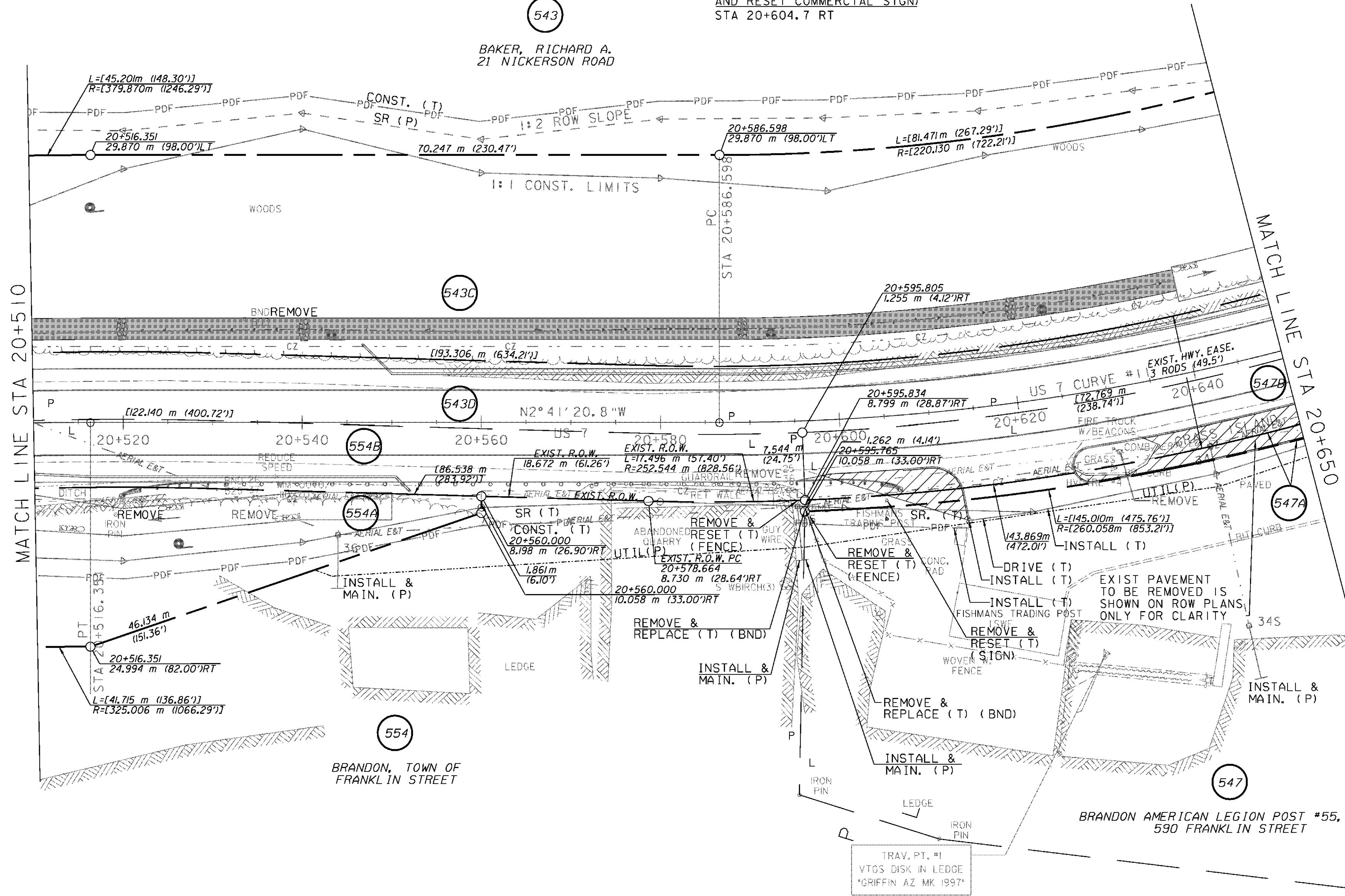
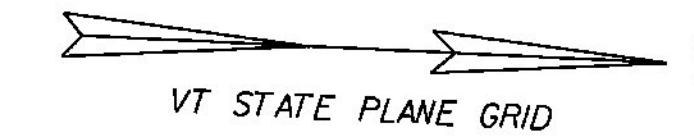


CONSTRUCT DRIVES
 STA 20+620.0 RT - 12.0 m WIDE, PAVED-COMM.
VERTICAL GRANITE CURB
 STA 20+606.6 - 20+613.2 RT
 STA 20+625.0 - 20+650.0 RT (ISLAND)
SPECIAL PROVISION (LINE DRILLING)
 STA 20+570 - 20+600 RT

REMOVING AND RESETTING FENCE
 STA 20+593.4 - 20+596.0 RT

MANUFACTURED TERMINAL SECTION, TANGENT
 STA 20+531.4 RT
 STA 20+595.0 RT
STEEL BEAM GUARDRAIL, GALVANIZED
 STA 20+531.4 - 20+595.0 RT
REMOVAL AND DISPOSAL OF GUARDRAIL
 STA 20+570.4 - 20+596.3 RT
SPECIAL PROVISION (REMOVE AND RESET COMMERCIAL SIGN)
 STA 20+604.7 RT

REMOVE & REPLACE PROPERTY MARKERS	
EXISTING	PROPOSED
BND 20+595.787	BND 20+595.765
9.671 m (31.73') RT	10.058 m (33.00') RT



MATCH LINE STA 20+510

MATCH LINE STA 20+650

LINES SHOWN ON THIS PLAN AS EXISTING PROPERTY LINES (P/L) ARE BELIEVED TO BE ACCURATE BUT SHOULD NOT BE RELIED UPON FOR PURPOSES UNRELATED TO THE STATE OF VERMONT ACQUISITION OF LAND AND RIGHTS FOR THIS PROJECT

⊗ DENOTES TREE OR STUMP REMOVAL



RIGHT-OF-WAY LAYOUT 27

PROJECT NAME: BRANDON	PLOT DATE: 9/3/2009
PROJECT NUMBER: NH 019-3(495)	DRAWN BY: JCS
FILE NAME: zb008s5-ROW27.dgn	CHECKED BY: PTS
PROJECT LEADER: CRB	ROW SHEET 47 OF 164
DESIGNED BY: PTS	SHEET 62 OF 546