

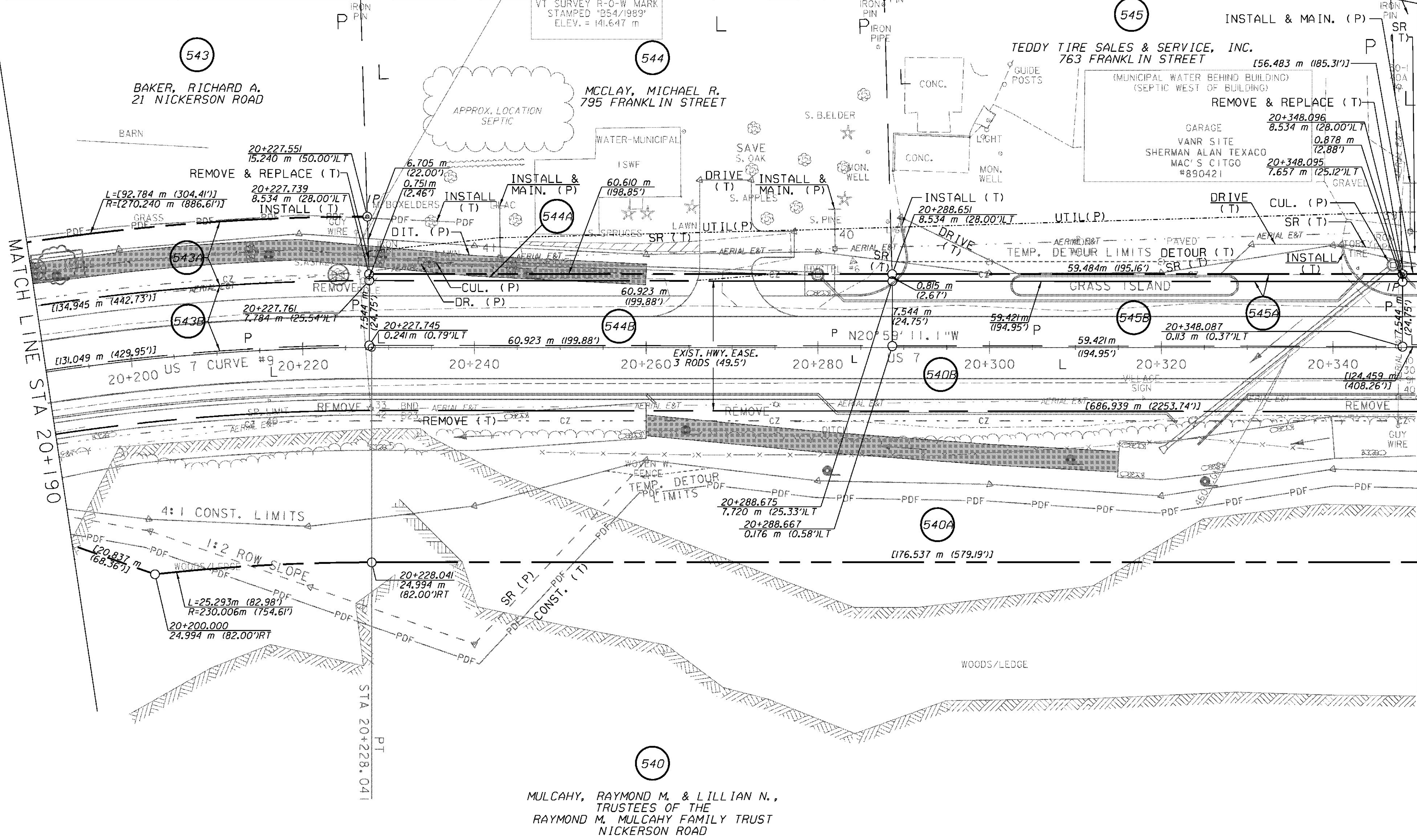
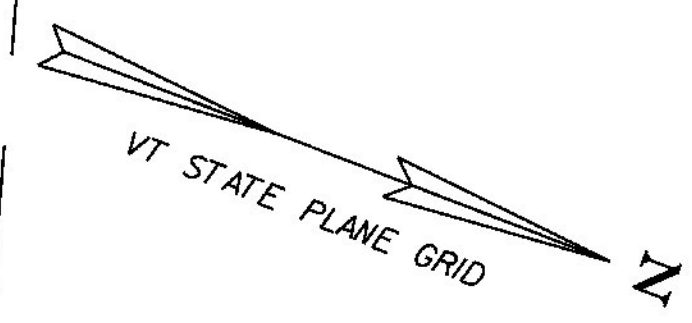
CONSTRUCT DRIVES
 STA 20+270.0 LT - 6.0 m WIDE, GRAVEL-RES.
 STA 20+296.5 LT - 12.0 m WIDE, PAVED-COMM.
 STA 20+334.9 LT - 12.0 m WIDE, PAVED-COMM.

VERTICAL GRANITE CURB
 STA 20+281.7 - 20+290.5 LT
 STA 20+302.5 - 20+329.0 LT (ISLAND)
 STA 20+341.0 - 20+350.0 LT

REMOVAL OF EXISTING FENCE
 STA 20+248.0 - 20+337.8 RT

EXCAVATION OF SURFACES AND PAVEMENTS (PLACE 100mm TOPSOIL, SEED, FERTILIZER, LIMESTONE AND HAY MULCH)
 STA 20+245.2 - 20+266.3 LT

REMOVE & REPLACE PROPERTY MARKERS	
EXISTING	PROPOSED
IP 20+227.688	IP 20+227.551
10.310 m (33.83')LT	15.240 m (50.00')LT
IP 20+348.097	IP 20+348.096
9.404 m (30.85')LT	8.534 m (28.00')LT
BND 20+233.676	
8.445 m (27.71')RT	NONE



LINES SHOWN ON THIS PLAN AS EXISTING PROPERTY LINES (P/L) ARE BELIEVED TO BE ACCURATE BUT SHOULD NOT BE RELIED UPON FOR PURPOSES UNRELATED TO THE STATE OF VERMONT ACQUISITION OF LAND AND RIGHTS FOR THIS PROJECT

⊗ DENOTES TREE OR STUMP REMOVAL



RIGHT-OF-WAY LAYOUT 25

PROJECT NAME:	BRANDON	PLOT DATE:	9/3/2009
PROJECT NUMBER:	NH 019-3(495)	DRAWN BY:	JCS
FILE NAME:	zb008s5-ROW25.dgn	CHECKED BY:	PTS
PROJECT LEADER:	CRB	ROW SHEET	45 OF 164
DESIGNED BY:	PTS	SHEET	60 OF 546