

US 7 CURVE #8
 A = 2° 30' 24.5" LT
 R = 2500.000
 T = 54.699
 L = 109.380
 E = 0.598
 BANK = NC

CONSTRUCT DRIVES
 STA 19+809.0 LT - 9.6 m WIDE, GRAVEL-COM.
 STA 19+826.9 RT - 3.3 m WIDE, GRAVEL-RES.

REMOVAL OF EXISTING FENCE
 STA 19+788.5 - 19+789.1 LT
 STA 19+802.0 - 19+804.0 LT (NOT SURV.)

REMOVE & REPLACE PROPERTY MARKERS	
EXISTING	PROPOSED
BND 19+777.930	BND 19+778.661
11.649 m (38.22') RT	15.240 m (50.00') RT
IP 19+788.871	IP 19+786.707
8.186 m (26.86') LT	14.079 m (46.19') LT

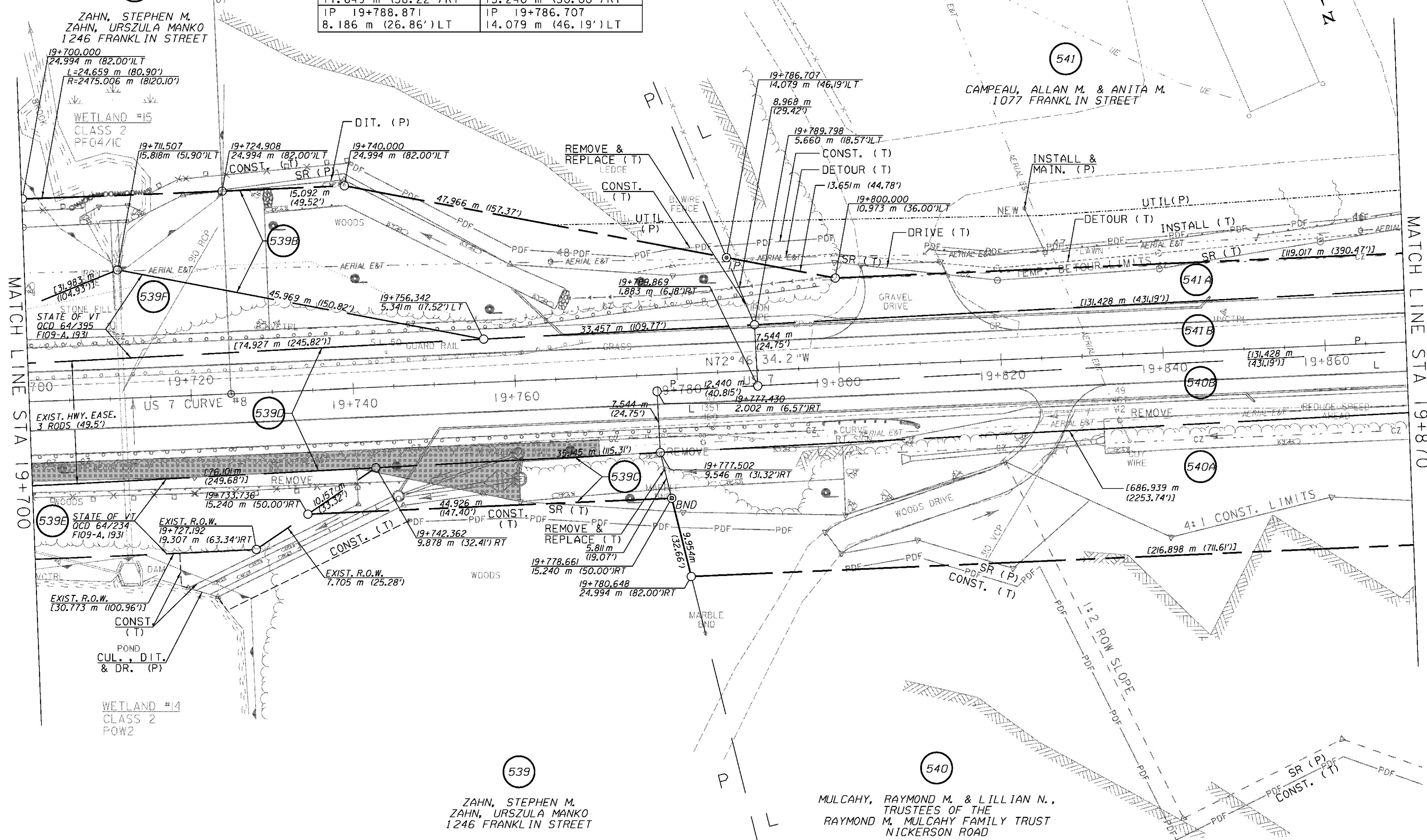
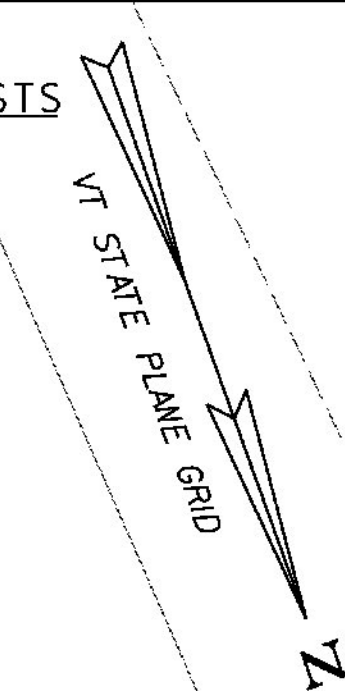
REMOVAL AND DISPOSAL OF GUARDRAIL
 STA 19+700.0 - 19+769.6 LT
 STA 19+700.0 - 19+790.4 RT

STEEL BEAM GUARDRAIL, GALVANIZED
 STA 19+700.0 - 19+797.8 RT
 STA 19+730.0 - 19+760.0 LT
 STA 19+760.0 - 19+798.0 LT
 (1:1 TAPER) (BURY IN BACKSLOPE)

STEEL BEAM GUARDRAIL, GALVANIZED W/2.4m POSTS
 STA 19+700.0 - 19+730.0 LT

ANCHOR FOR STEEL BEAM RAIL
 STA 19+798.0 LT

MANUFACTURED TERMINAL SECTION, FLARED
 STA 19+797.8 RT



MATCH LINE STA 19+700

MATCH LINE STA 19+870

LINES SHOWN ON THIS PLAN AS EXISTING PROPERTY LINES (P/L) ARE BELIEVED TO BE ACCURATE BUT SHOULD NOT BE RELIED UPON FOR PURPOSES UNRELATED TO THE STATE OF VERMONT ACQUISITION OF LAND AND RIGHTS FOR THIS PROJECT

⊗ DENOTES TREE OR STUMP REMOVAL



RIGHT-OF-WAY LAYOUT 22

PROJECT NAME:	BRANDON	PLOT DATE:	9/3/2009
PROJECT NUMBER:	NH 019-3(495)	DRAWN BY:	JCS
FILE NAME:	zb008s5-ROW22.dgn	CHECKED BY:	PTS
PROJECT LEADER:	CRB	ROW SHEET	42 OF 164
DESIGNED BY:	PTS	SHEET	57 OF 546