

CONSTRUCT DRIVES
 STA 19+570.0 RT - 11.6 m WIDE, PAVED-RES.

SPECIAL PROVISION (REMOVING AND RESETTING GROUND/ORNAMENTAL LIGHT ASSEMBLY)
 STA 19+641.2 RT (2)

RELOCATE MAILBOX, SINGLE SUPPORT
 STA 19+576.8 RT

SPECIAL PROVISION (REMOVE AND RESET COMMERCIAL SIGN)
 STA 19+641.5 RT

REMOVE & REPLACE PROPERTY MARKERS	
BND 19+625.761	NONE
11.388 m (37.36') RT	NONE
BND 19+626.012	NONE
8.730 m (28.64') LT	NONE

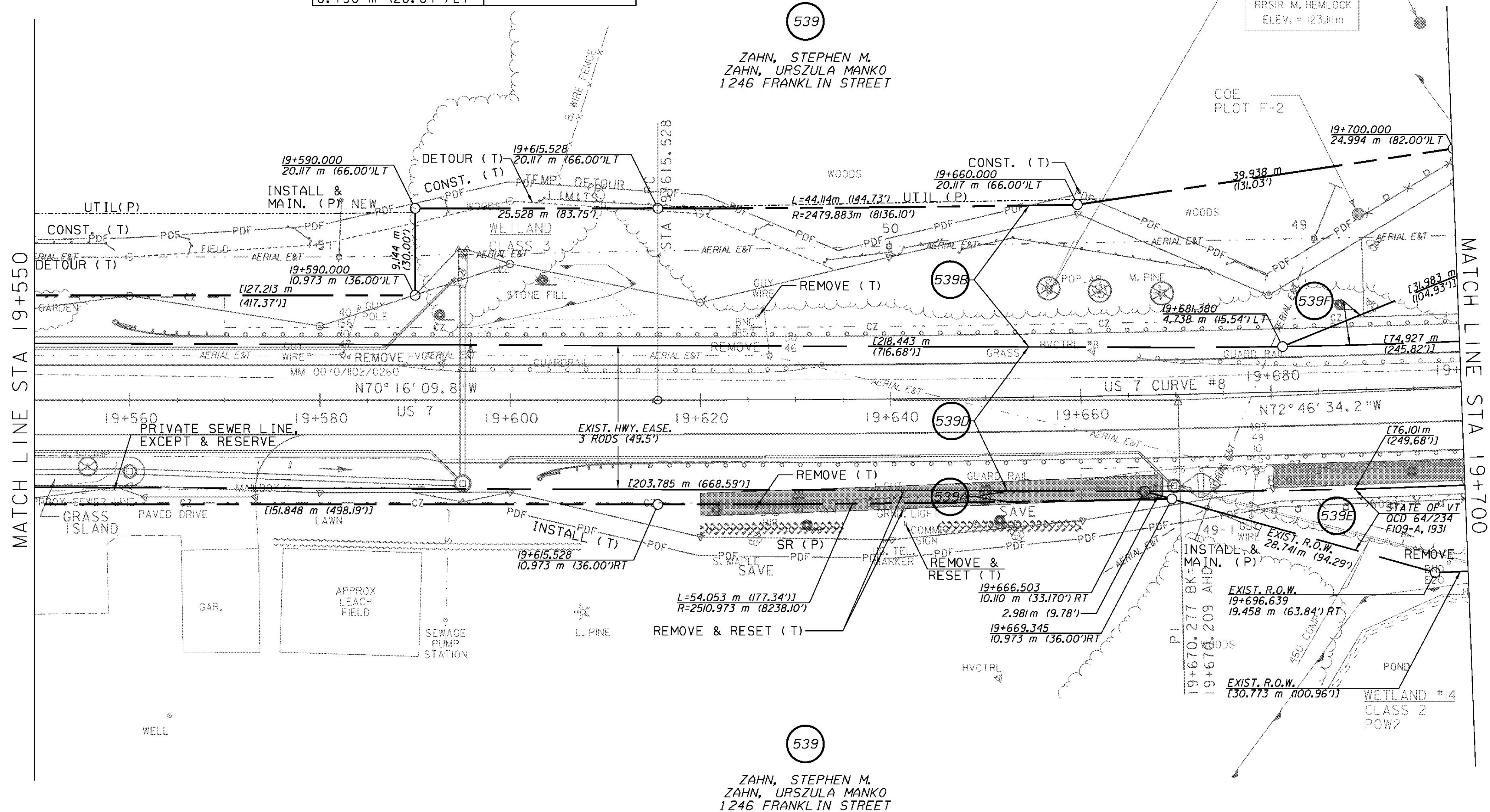
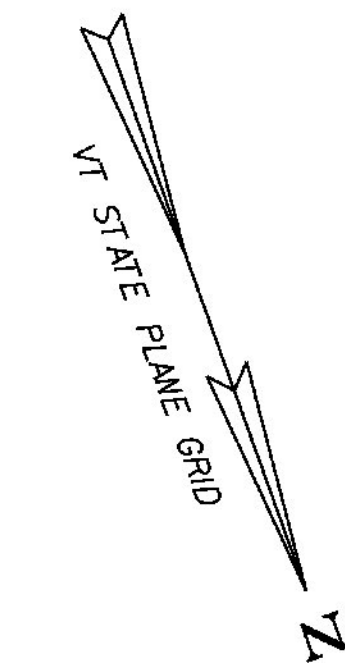
REMOVAL AND DISPOSAL OF GUARDRAIL
 STA 19+587.3 - 19+633.0 LT
 STA 19+660.3 - 19+700.0 RT
 STA 19+666.0 - 19+700.0 LT

STEEL BEAM GUARDRAIL, GALVANIZED
 STA 19+570.0 - 19+690.0 LT
 STA 19+615.4 - 19+700.0 RT

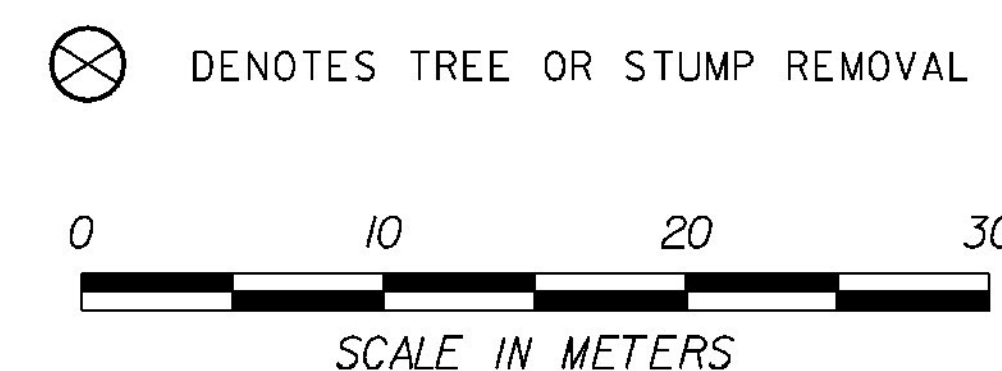
MANUFACTURED TERMINAL SECTION, TANGENT
 STA 19+570.0 LT
 STA 19+615.4 RT

STEEL BEAM GUARDRAIL, GALVANIZED W/2.4m POSTS
 STA 19+690.0 - 19+700.0 LT

US 7 CURVE #8
 $\Delta = 2^{\circ}30'24.5''$ LT
 R = 2500.000
 T = 54.699
 L = 109.380
 E = 0.598
 BANK = NC



LINES SHOWN ON THIS PLAN AS EXISTING PROPERTY LINES (P/L) ARE BELIEVED TO BE ACCURATE BUT SHOULD NOT BE RELIED UPON FOR PURPOSES UNRELATED TO THE STATE OF VERMONT ACQUISITION OF LAND AND RIGHTS FOR THIS PROJECT



RIGHT-OF-WAY LAYOUT 21

PROJECT NAME:	BRANDON
PROJECT NUMBER:	NH 019-3(495)
FILE NAME:	zb008s5-ROW21.dgn
PROJECT LEADER:	CRB
DESIGNED BY:	PTS
ROW SHEET 41 OF 164	
PLOT DATE:	9/3/2009
DRAWN BY:	JCS
CHECKED BY:	PTS
	SHEET 56 OF 546