

CONSTRUCT DRIVES  
 STA 19+215.2 RT - 4.0 m WIDE, PAVED-COMM.  
 COLD PLANING, BITUMINOUS CONCRETE PAVEMENT  
 (TYPE 111S) (1-45 mm LIFT)  
 STA 19+070.0 - 19+230.0

SPECIAL PROVISION (REMOVE  
 AND RESET COMMERCIAL SIGN)  
 STA 19+199.4 RT

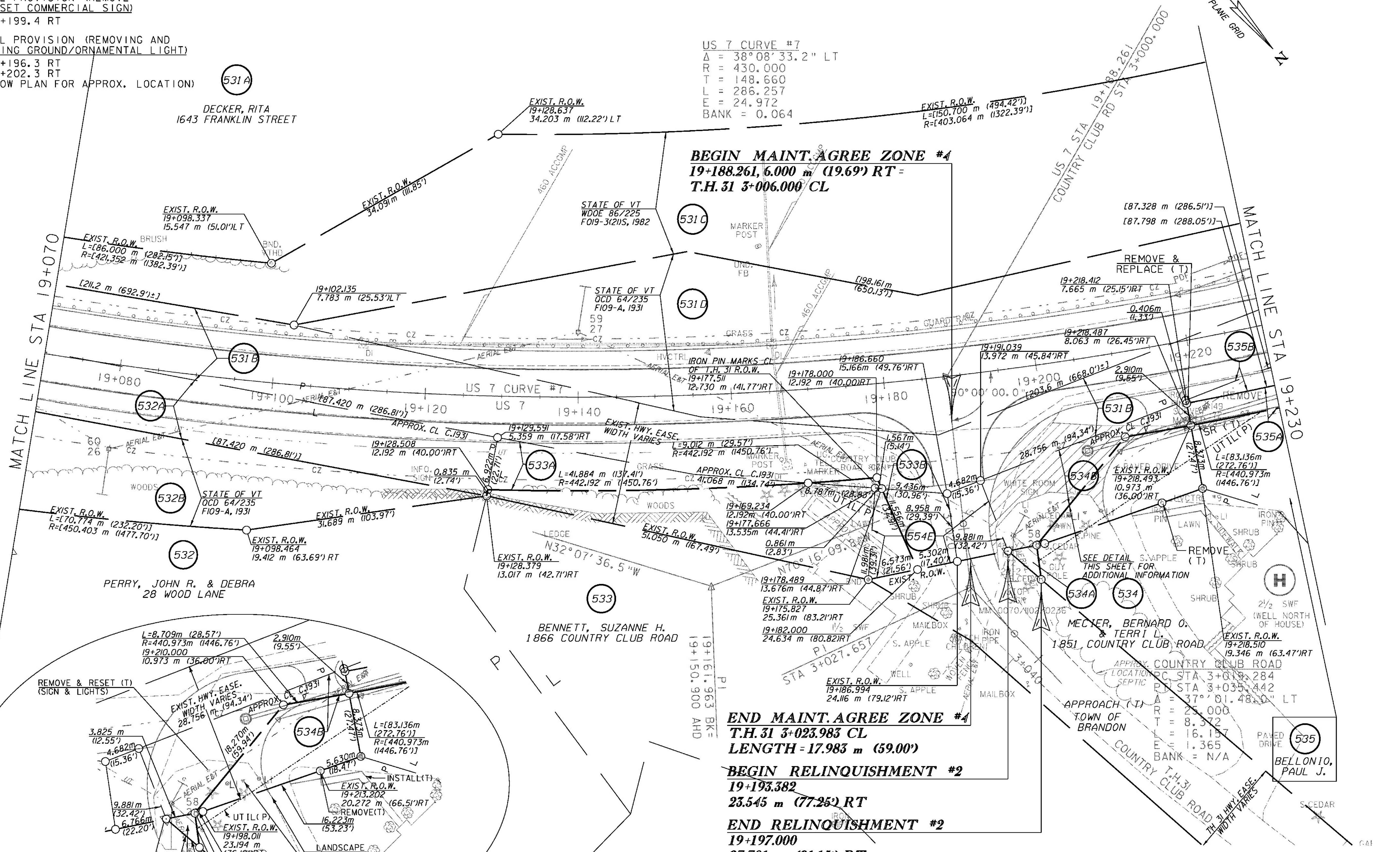
SPECIAL PROVISION (REMOVING AND  
 RESETTING GROUND/ORNAMENTAL LIGHT)  
 STA 19+196.3 RT  
 STA 19+202.3 RT  
 (SEE ROW PLAN FOR APPROX. LOCATION)

EXCAVATION OF SURFACES AND  
 PAVEMENTS (PLACE 100mm  
 TOPSOIL, SEED, FERTILIZER,  
 LIMESTONE AND HAY MULCH)  
 STA 3+026.7 LT - 19+213.1 RT

REMOVE & REPLACE PROPERTY MARKERS	
EXISTING	PROPOSED
IP 19+213.202 20.272 m (66.51') RT	NONE
IP 19+218.412 7.665 m (25.15') RT	IP 19+218.493 10.973 m (36.00') RT

PORTLAND CEMENT CONCRETE SIDEWALK, 125 mm  
 STA 19+213.1 - 19+219.0 RT

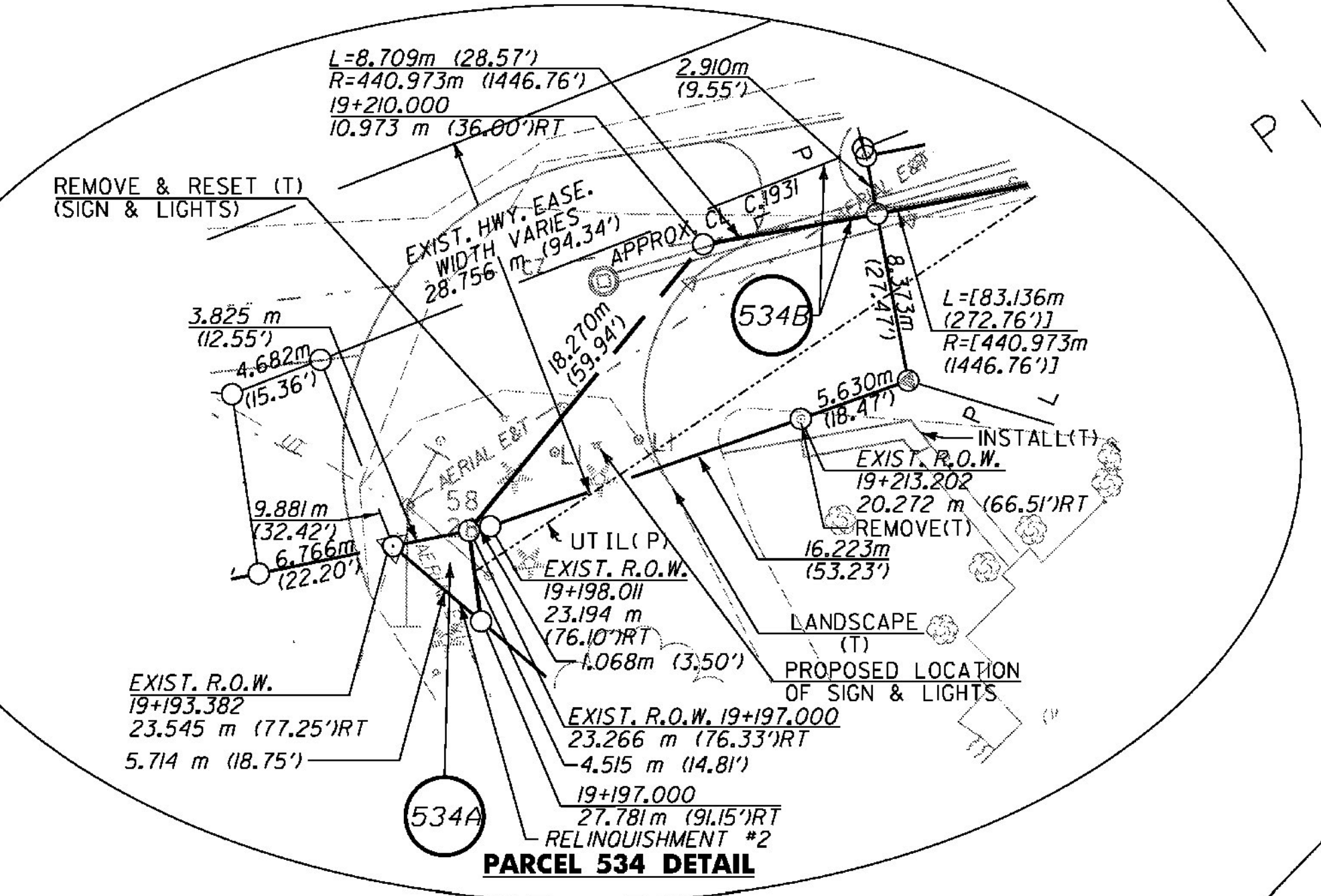
US 7 CURVE #7  
 $\Delta = 38^{\circ}08'33.2''$  LT  
 $R = 430.000$   
 $T = 148.660$   
 $L = 286.257$   
 $E = 24.972$   
 $BANK = 0.064$



**BEGIN MAINT. AGREE ZONE #4**  
 19+188.261, 6.000 m (19.69') RT =  
 T.H. 31 3+006.000' CL

**END MAINT. AGREE ZONE #4**  
 T.H. 31 3+023.983' CL  
 LENGTH = 17.983 m (59.00')

**BEGIN RELINQUISHMENT #2**  
 19+193.382  
 23.545 m (77.25') RT  
**END RELINQUISHMENT #2**  
 19+197.000  
 27.781 m (91.15') RT



LINES SHOWN ON THIS PLAN AS EXISTING  
 PROPERTY LINES (P/L) ARE BELIEVED TO  
 BE ACCURATE BUT SHOULD NOT BE RELIED  
 UPON FOR PURPOSES UNRELATED TO THE  
 STATE OF VERMONT ACQUISITION OF LAND  
 AND RIGHTS FOR THIS PROJECT

DENOTES TREE OR STUMP REMOVAL



PROJECT NAME:	BRANDON	PLOT DATE:	9/3/2009
PROJECT NUMBER:	NH 019-3(495)	DRAWN BY:	JCS
FILE NAME:	z000855-ROW18.dgn	CHECKED BY:	PTS
PROJECT LEADER:	CRB	ROW SHEET 38 OF 164	SHEET 53 OF 546