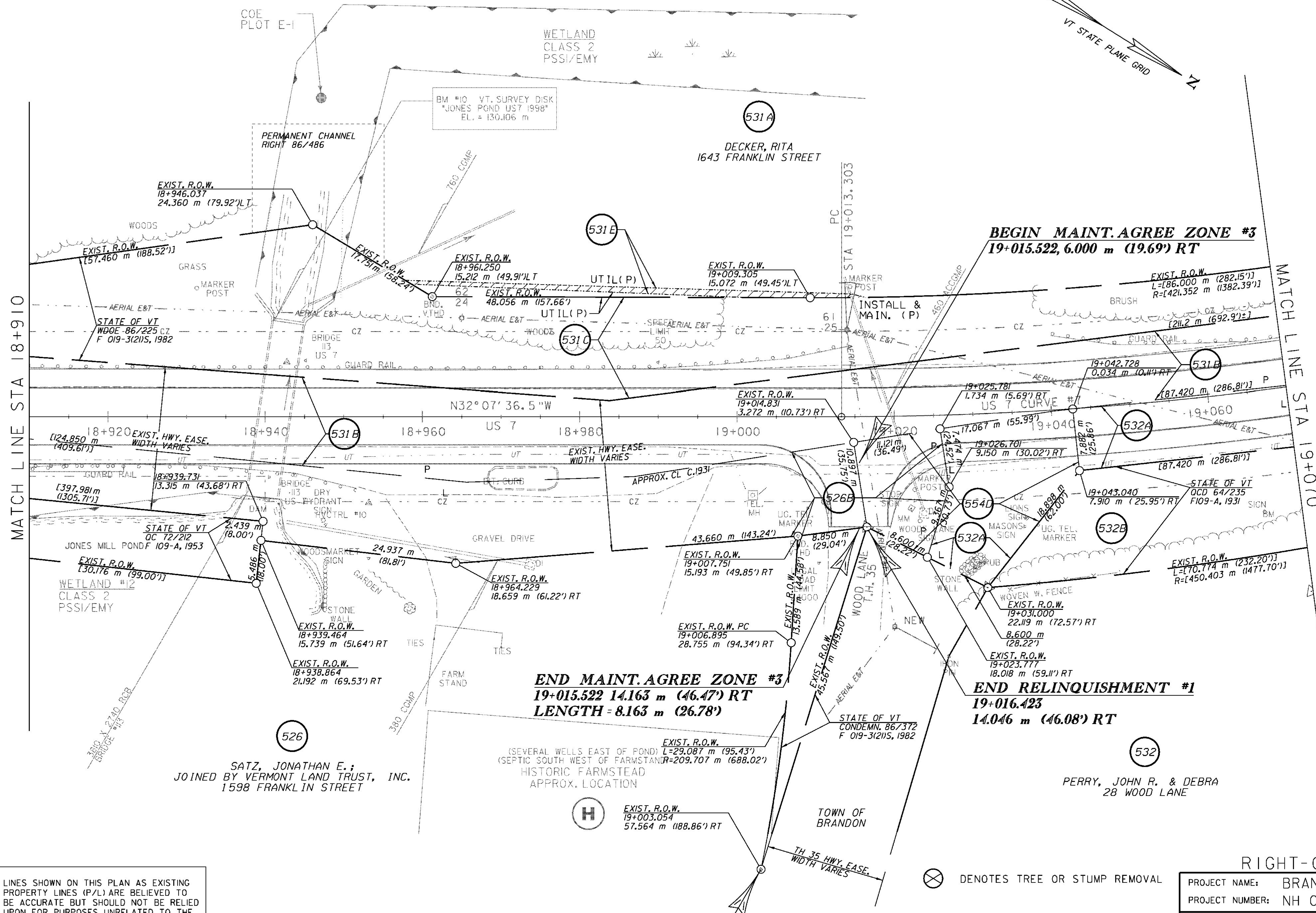
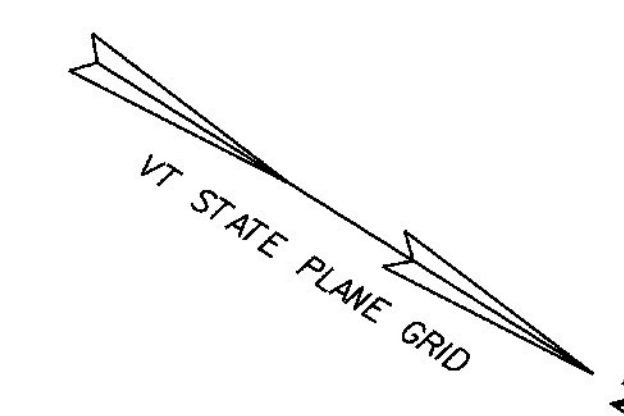


REMOVAL AND DISPOSAL OF GUARDRAIL
 STA 18+910.0 - 18+922.0 RT
 STEEL BEAM GUARDRAIL, GALVANIZED
 STA 18+910.0 - 18+922.0 RT (CONNECT
 TO EXISTING AT STA 18+922.0 RT)

COLD PLANING, BITUMINOUS CONCRETE PAVEMENT
 (TYPE 111S) (1-45 mm LIFT)
 STA 18+910.0 - 19+070.0

COE
 PLOT E-2

COE
 PLOT E-1



MATCH LINE STA 18+910

MATCH LINE STA 19+070

LINES SHOWN ON THIS PLAN AS EXISTING
 PROPERTY LINES (P/L) ARE BELIEVED TO
 BE ACCURATE BUT SHOULD NOT BE RELIED
 UPON FOR PURPOSES UNRELATED TO THE
 STATE OF VERMONT ACQUISITION OF LAND
 AND RIGHTS FOR THIS PROJECT

BEGIN RELINQUISHMENT #1
 19+003.054, 57.564 m (188.86') RT
 LENGTH = 45.567 m (149.50')

END MAINT. AGREE ZONE #3
 19+015.522 14.163 m (46.47') RT
 LENGTH = 8.163 m (26.78')

END RELINQUISHMENT #1
 19+016.423
 14.046 m (46.08') RT

⊗ DENOTES TREE OR STUMP REMOVAL



RIGHT-OF-WAY LAYOUT 17

PROJECT NAME:	BRANDON	PLOT DATE:	9/3/2009
PROJECT NUMBER:	NH 019-3(495)	DRAWN BY:	JCS
FILE NAME:	z008s5-ROW17.dgn	CHECKED BY:	PTS
PROJECT LEADER:	CRB	ROW SHEET 37 OF 164	SHEET 52 OF 546