



**CONSTRUCT DRIVES**  
 STA 18+778.6 LT - 7.2 m WIDE, GRAVEL-RES.  
 STA 18+848.6 LT - 7.2 m WIDE, GRAVEL-RES.  
 STA 18+895.5 LT - 3.6 m WIDE, GRAVEL-RES.

**COLD PLANING, BITUMINOUS CONCRETE PAVEMENT (TYPE 111S) (1-45 mm LIFT)**  
 STA 18+856.0 - 18+910.0

**SPECIAL PROVISION (PRECAST CONCRETE GEOGRID RETAINING WALL)**  
 STA 18+750.0 - 18+770.0 RT

**RELOCATE MAILBOX, SINGLE SUPPORT**  
 STA 18+785.5 LT  
 STA 18+896.9 RT

**REMOVING AND RESETTING FENCE**  
 STA 18+768.6 - 18+774.5 LT  
 STA 18+782.5 - 18+802.9 LT

**BITUMINOUS CONCRETE CURB, TYPE A**  
 STA 18+750.0 - 18+775.0 RT

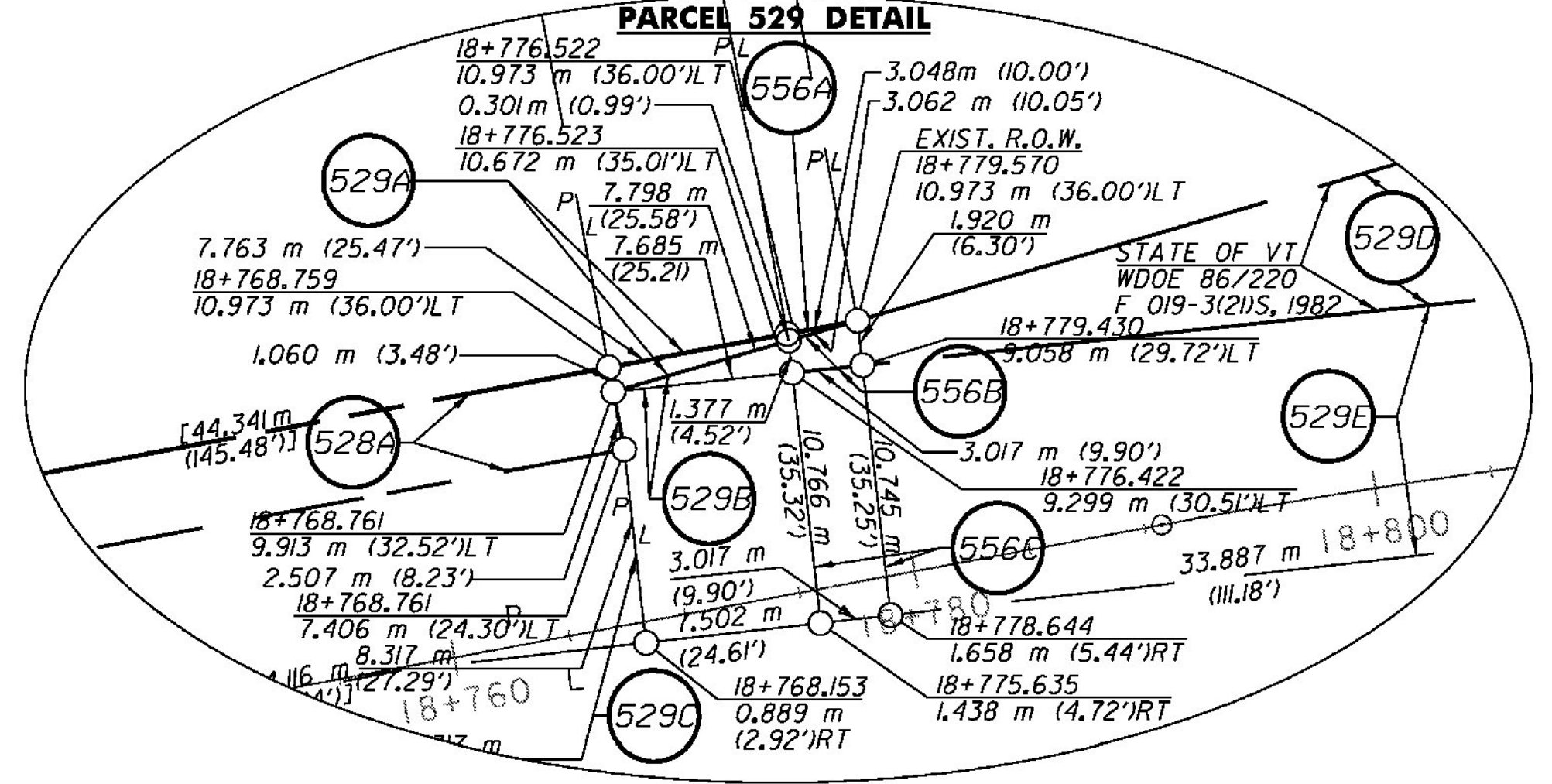
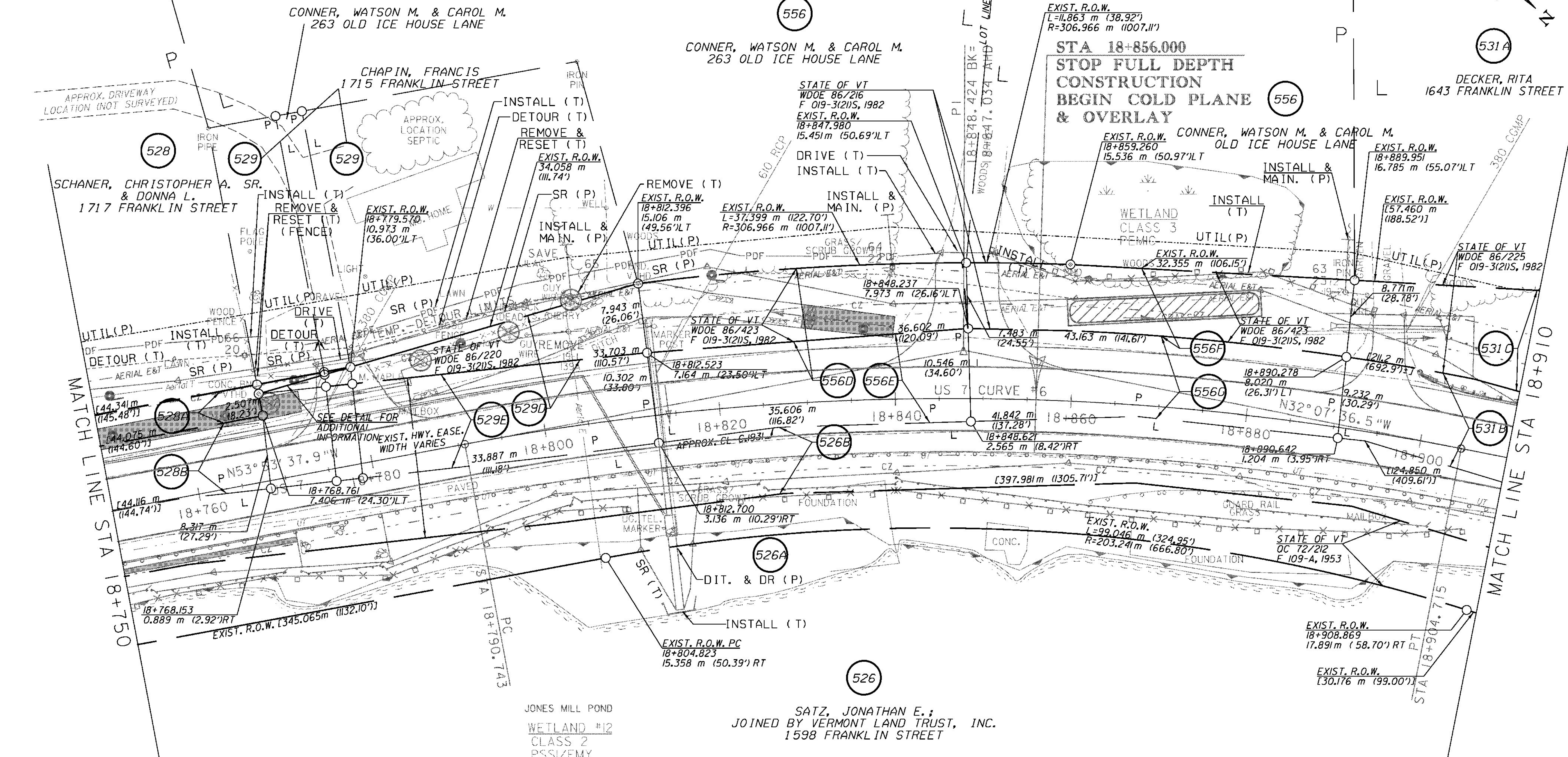
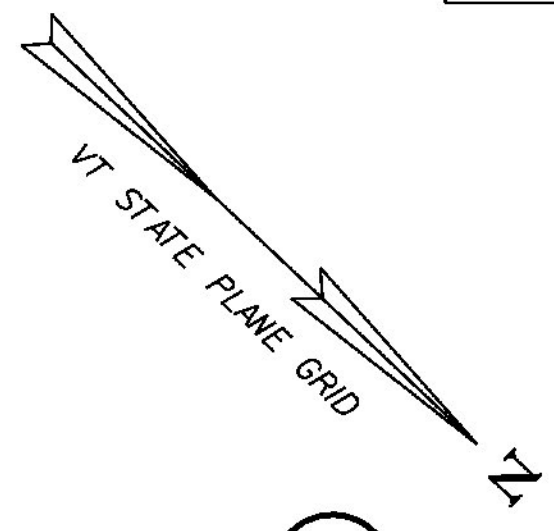
**REMOVAL AND DISPOSAL OF GUARDRAIL**  
 STA 18+862.6 - 18+910.0 RT  
 STA 18+899.5 - 18+910.0 LT

**STEEL BEAM GUARDRAIL, GALVANIZED**  
 STA 18+780.0 - 18+910.0 RT

**MANUFACTURED TERMINAL SECTION, TANGENT**  
 STA 18+910.0 LT (CONNECT TO EXISTING AT STA 18+910 LT)

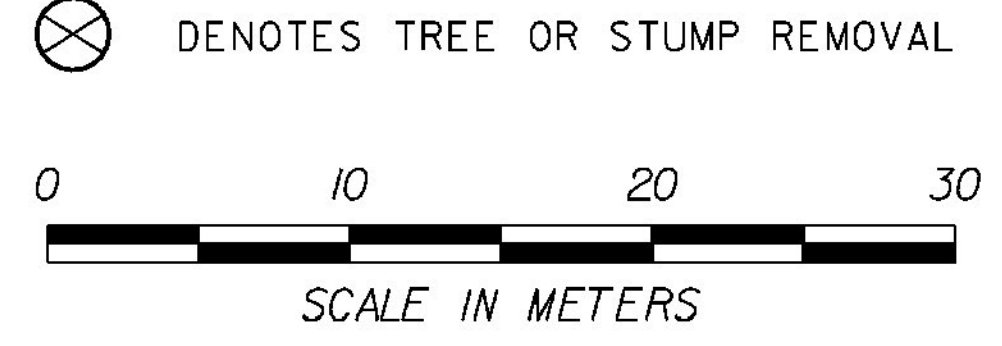
**STEEL BEAM GUARDRAIL, GALVANIZED/NESTED W/2.4m POSTS**  
 STA 18+750.0 - 18+780.0 RT (SEE PRECAST CONCRETE GEOGRID RETAINING WALL DETAIL SHEET 4)

REMOVE & REPLACE PROPERTY MARKERS	
EXISTING	PROPOSED
VTHD 18+768.761	VTHD 18+768.761
9.913 m (32.52') LT	9.913 m (32.52') LT
VTHD 18+812.396	VTHD 18+812.396
15.106 m (49.56') LT	15.106 m (49.56') LT



LINES SHOWN ON THIS PLAN AS EXISTING PROPERTY LINES (P/L) ARE BELIEVED TO BE ACCURATE BUT SHOULD NOT BE RELIED UPON FOR PURPOSES UNRELATED TO THE STATE OF VERMONT ACQUISITION OF LAND AND RIGHTS FOR THIS PROJECT

**US 7 CURVE #6**  
 $\Delta = 21^\circ 46' 01.4''$  RT  
 $R = 300.000$   
 $L = 57.681$   
 $T = 113.972$   
 $E = 5.495$   
 $BANK = 0.080$



**RIGHT-OF-WAY LAYOUT 16**

PROJECT NAME:	BRANDON
PROJECT NUMBER:	NH 019-3(495)
FILE NAME:	z000855-ROW16.dgn
PLOT DATE:	9/3/2009
PROJECT LEADER:	CRB
DRAWN BY:	JCS
DESIGNED BY:	PTS
CHECKED BY:	PTS
ROW SHEET 36 OF 164	SHEET 51 OF 546