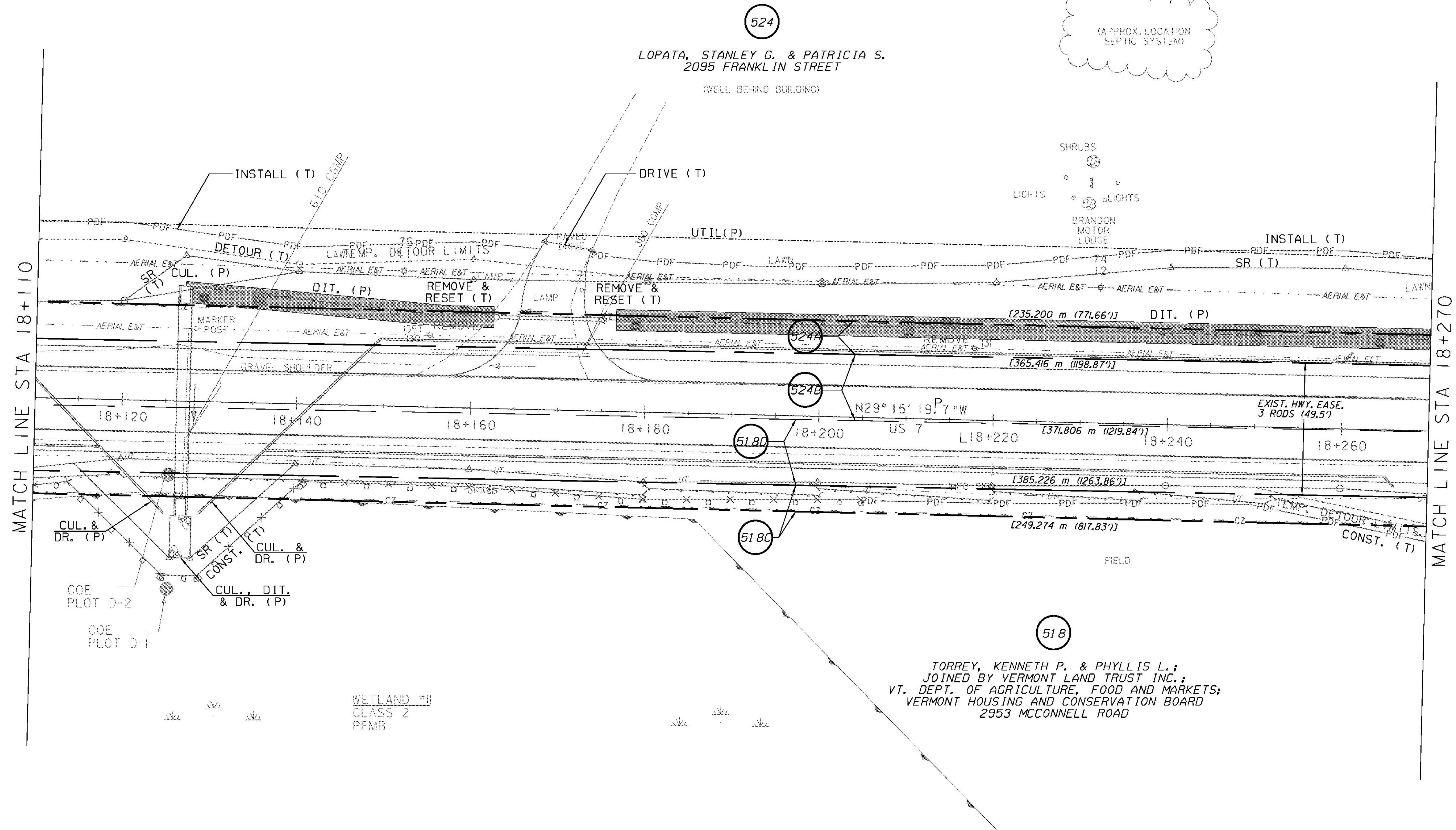
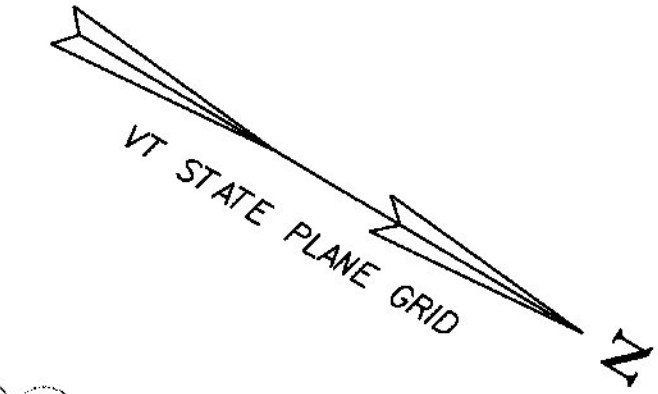


CONSTRUCT DRIVES  
 STA 18+169.2 LT - 7.2 m WIDE, PAVED-COMM.

SPECIAL PROVISION (REMOVING AND  
 RESETTING GROUND/ORNAMENTAL LIGHT)  
 STA 18+164.3 LT  
 STA 18+172.4 LT



LINES SHOWN ON THIS PLAN AS EXISTING  
 PROPERTY LINES (P/L) ARE BELIEVED TO  
 BE ACCURATE BUT SHOULD NOT BE RELIED  
 UPON FOR PURPOSES UNRELATED TO THE  
 STATE OF VERMONT ACQUISITION OF LAND  
 AND RIGHTS FOR THIS PROJECT

⊗ DENOTES TREE OR STUMP REMOVAL



RIGHT-OF-WAY LAYOUT 12

PROJECT NAME:	BRANDON	PLOT DATE:	9/3/2009
PROJECT NUMBER:	NH 019-3(495)	DRAWN BY:	JCS
FILE NAME:	zb008s5-ROW12.dgn	CHECKED BY:	PTS
PROJECT LEADER:	CRB	ROW SHEET	32 OF 164
DESIGNED BY:	PTS	SHEET	47 OF 546