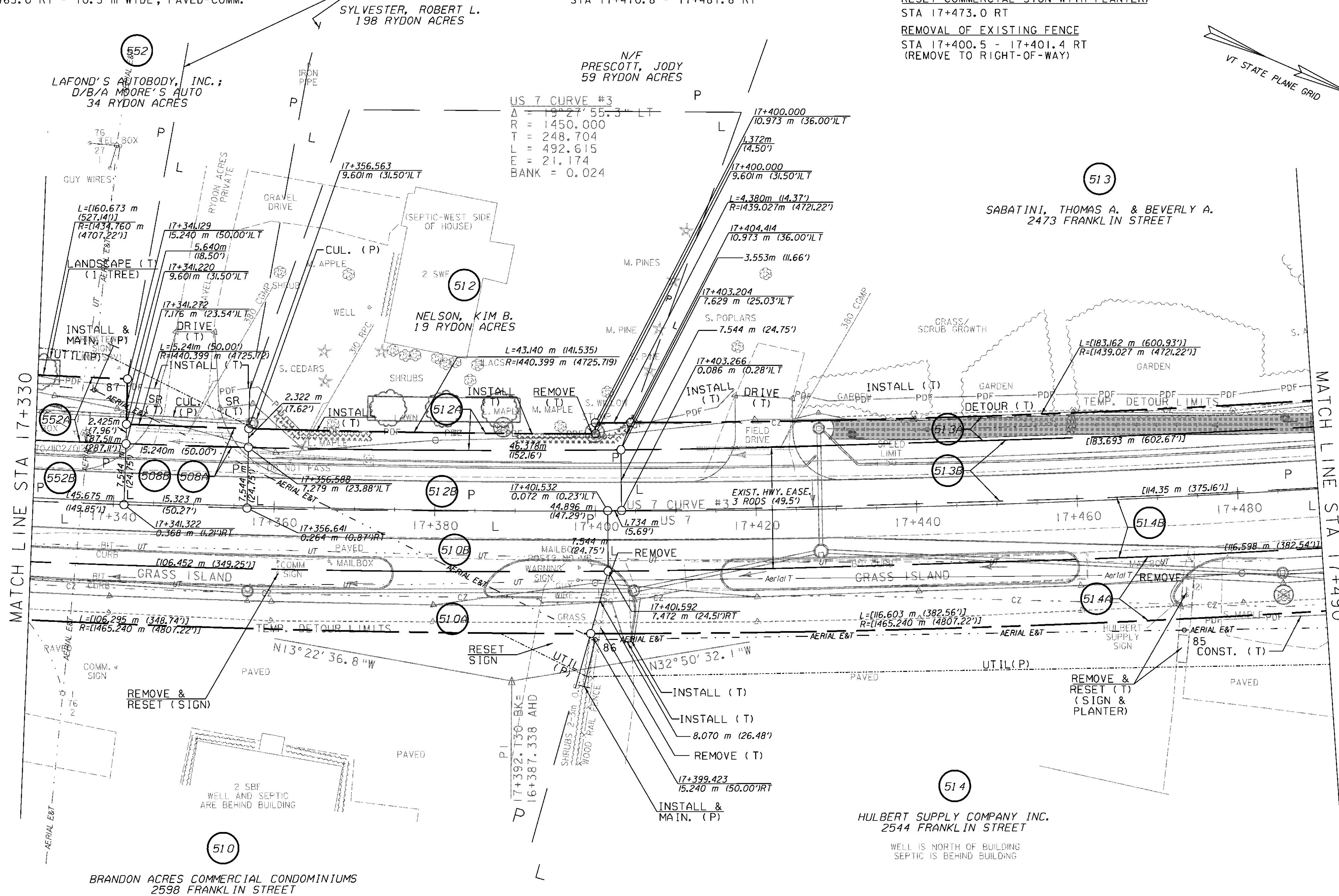
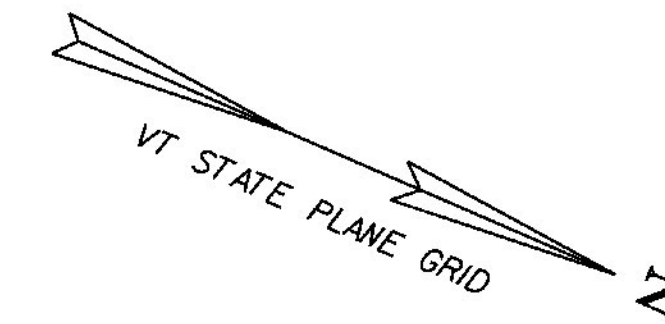


CONSTRUCT DRIVES
 STA 17+349.0 LT - 7.2 m WIDE, GRAVEL-COMM.
 STA 17+380.0 RT - 10.5 m WIDE, PAVED-COMM.
 STA 17+410.0 RT - 10.5 m WIDE, PAVED-COMM.
 STA 17+420.0 LT - 7.0 m WIDE, GRAVEL-RES.
 STA 17+465.0 RT - 10.5 m WIDE, PAVED-COMM.

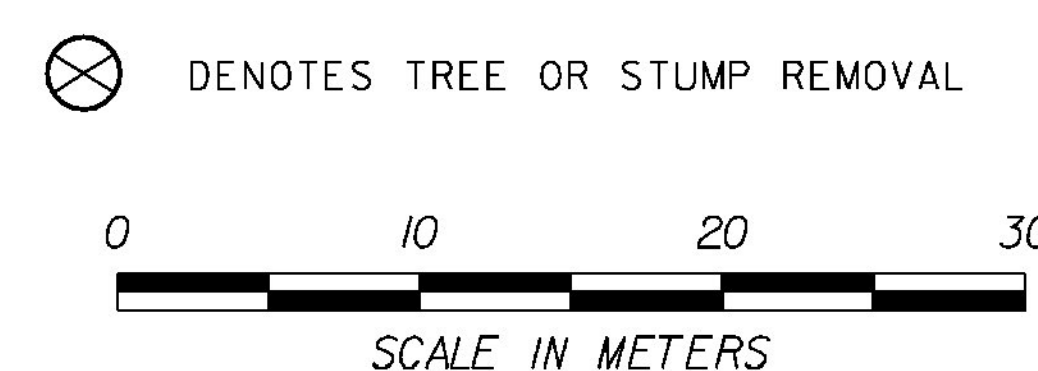
RELOCATE MAILBOX, SINGLE SUPPORT
 STA 17+367.0 RT
 STA 17+473.5 RT

GRANITE SLOPE EDGING (100mm)
 STA 17+330.0 - 17+375.0 RT (ISLAND)
 STA 17+360.0 - 17+397.0 LT
 STA 17+385.5 - 17+405.0 RT
 STA 17+415.5 - 17+460.0 RT (ISLAND)
 STA 17+470.8 - 17+481.8 RT

SPECIAL PROVISION (REMOVE AND RESET COMMERCIAL SIGN)
 STA 17+360.0 RT
SPECIAL PROVISION (REMOVE AND RESET COMMERCIAL SIGN WITH PLANTER)
 STA 17+473.0 RT
REMOVAL OF EXISTING FENCE
 STA 17+400.5 - 17+401.4 RT
 (REMOVE TO RIGHT-OF-WAY)



LINES SHOWN ON THIS PLAN AS EXISTING PROPERTY LINES (P/L) ARE BELIEVED TO BE ACCURATE BUT SHOULD NOT BE RELIED UPON FOR PURPOSES UNRELATED TO THE STATE OF VERMONT ACQUISITION OF LAND AND RIGHTS FOR THIS PROJECT



RIGHT-OF-WAY LAYOUT 7

PROJECT NAME:	BRANDON
PROJECT NUMBER:	NH 019-3(495)
FILE NAME:	zb008s5-ROW07.dgn
PLOT DATE:	9/3/2009
PROJECT LEADER:	CRB
DRAWN BY:	JCS
DESIGNED BY:	PTS
CHECKED BY:	PTS
ROW SHEET 27 OF 164	SHEET 42 OF 546