

**CONSTRUCT DRIVES**  
 STA 16+575.9 RT - 3.6 m WIDE, PAVED-RES.  
 STA 16+655.4 LT - 7.2 m WIDE, PAVED-COMM.

CHAIN-LINK FENCE, 1.8M  
 BRACING ASSEMBLY FOR CHAIN-LINK FENCE  
 GEOTEXTILE FOR SILT FENCE  
 STA 16+530 - 16+550 RT

**TEMPORARY TRAFFIC BARRIER (CMB)**  
 STA 16+530 - 16+550 RT  
 (PER NECESSITY STIPULATION)

**REMOVING AND RESETTING LIGHT POLE**  
 STA 16+555.0 LT  
 STA 16+596.5 LT  
 STA 16+637.7 LT

**US 7 CURVE #1**  
 $\Delta = 1^{\circ}42'16.6''$  LT  
 $R = 11,225.000$   
 $T = 166.989$   
 $L = 333.953$   
 $E = 1.242$   
 BANK = NC

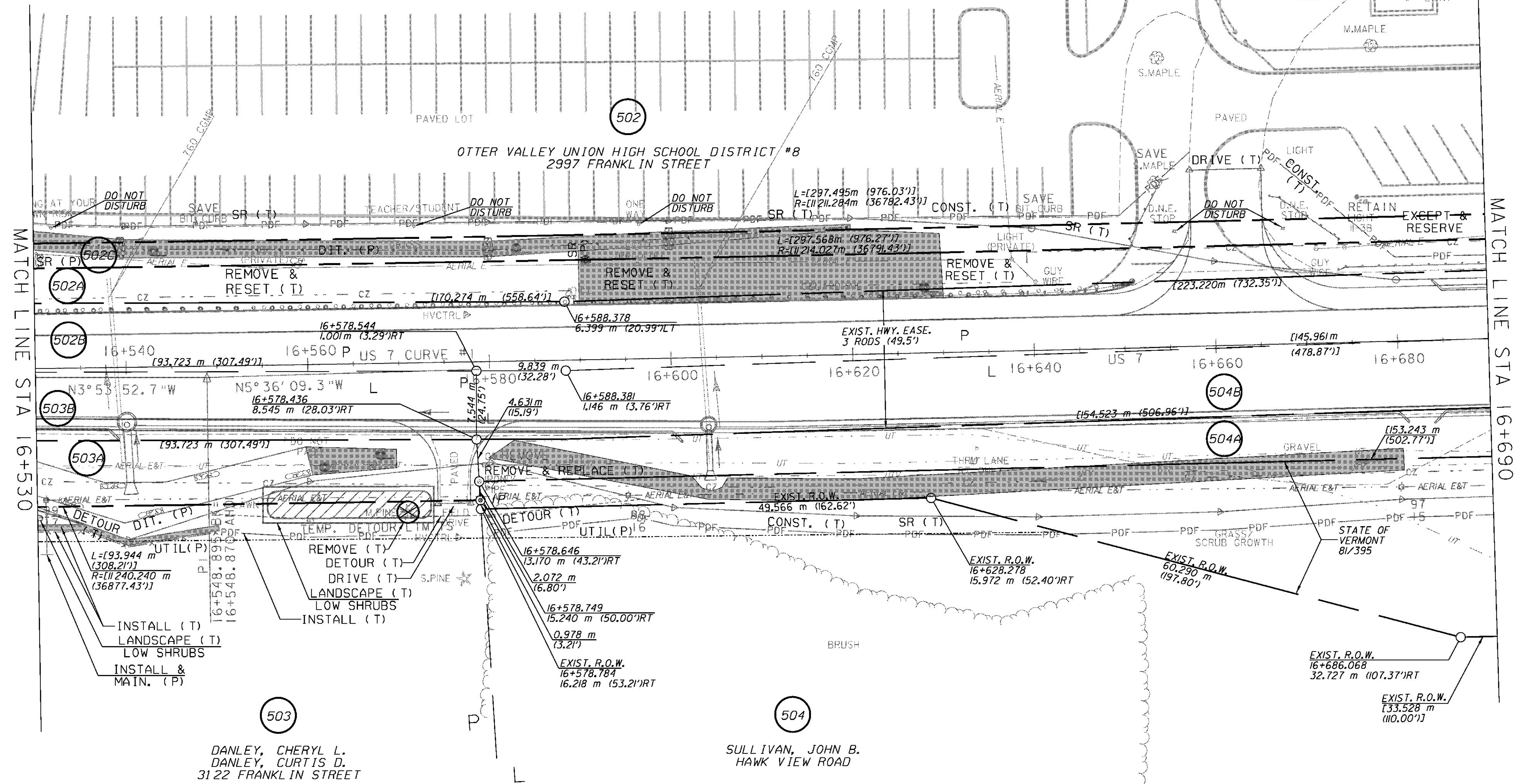
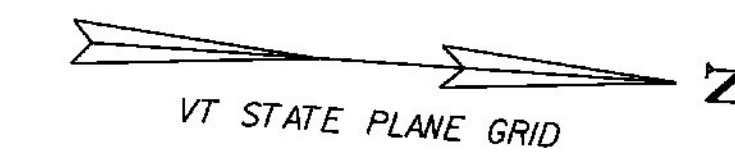
**REMOVAL AND DISPOSAL OF GUARDRAIL**  
 STA 16+530.0 - 16+651.2 LT

**STEEL BEAM GUARDRAIL, GALVANIZED**  
 STA 16+620.0 - 16+635.6 LT

**STEEL BEAM GUARDRAIL, GALVANIZED W/2.4m POSTS**  
 STA 16+530.0 - 16+620.0 LT

**MANUFACTURED TERMINAL SECTION, TANGENT**  
 STA 16+635.6 LT

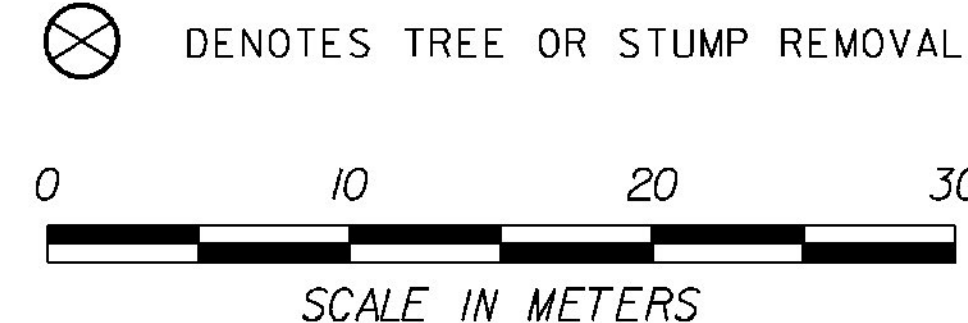
REMOVE & REPLACE PROPERTY MARKERS	
EXISTING	PROPOSED
IP 16+578.646 13.170 m (43.21') RT	IP 16+578.749 15.240 m (50.00') RT



MATCH LINE STA 16+530

MATCH LINE STA 16+690

LINES SHOWN ON THIS PLAN AS EXISTING PROPERTY LINES (P/L) ARE BELIEVED TO BE ACCURATE BUT SHOULD NOT BE RELIED UPON FOR PURPOSES UNRELATED TO THE STATE OF VERMONT ACQUISITION OF LAND AND RIGHTS FOR THIS PROJECT



RIGHT-OF-WAY LAYOUT 2	
PROJECT NAME:	BRANDON
PROJECT NUMBER:	NH 019-3(495)
FILE NAME:	zb008s5-ROW02.dgn
PROJECT LEADER:	CRB
DESIGNED BY:	PTS
ROW SHEET 22 OF 164	
PLOT DATE:	9/3/2009
DRAWN BY:	JCS
CHECKED BY:	PTS
	SHEET 37 OF 546