

STA 18+595
END ALTERNATING
ONE-WAY TRAFFIC

STA 18+595
RESUME PHASED CONSTRUCTION
WITH TWO-WAY TRAFFIC

WATER - WELL, SPRING
APPROX. 300' FROM US 7 &
75' FROM PICKENS/EASTMAN
PROPERTY LINE

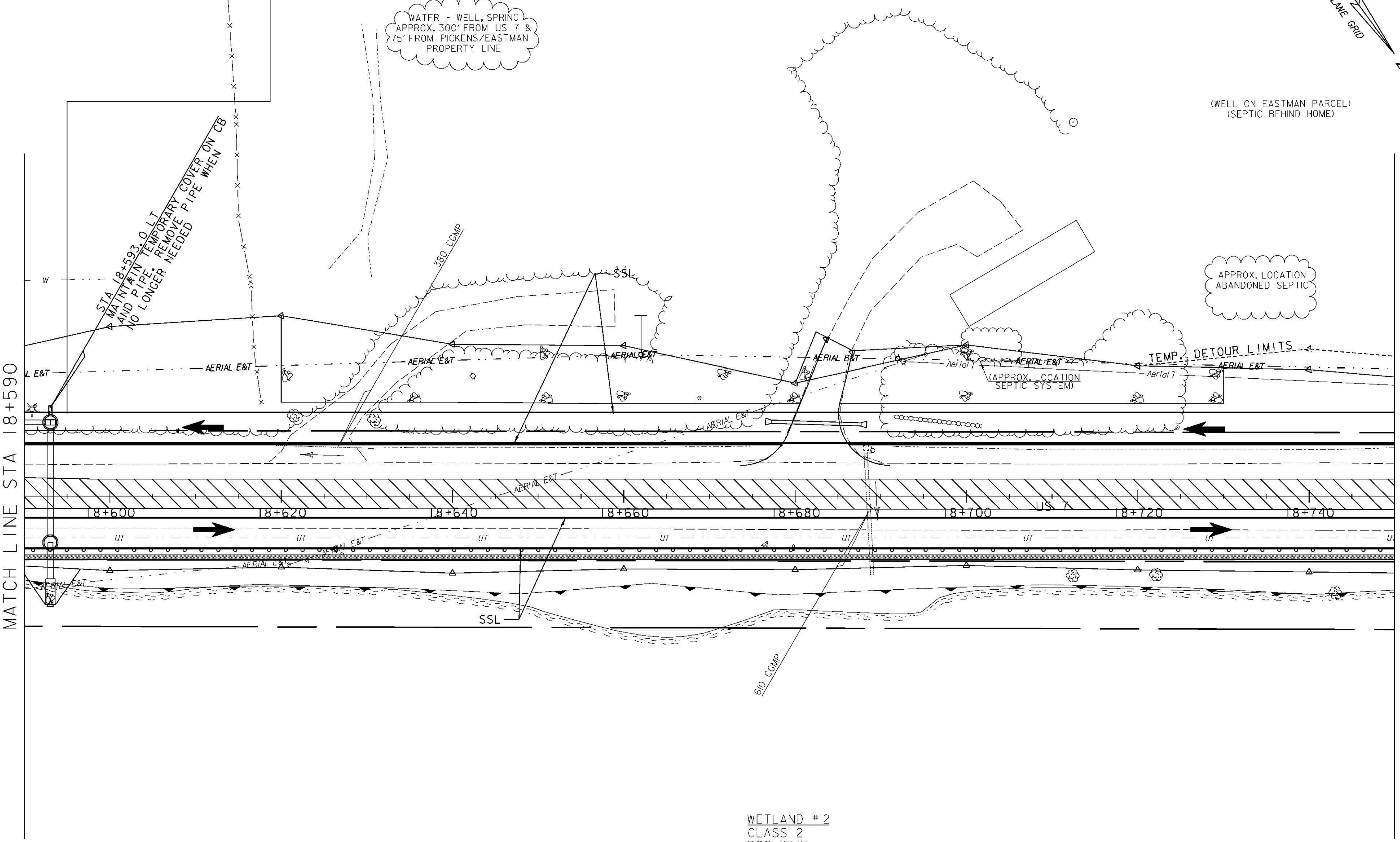
(WELL ON EASTMAN PARCEL)
(SEPTIC BEHIND HOME)

APPROX. LOCATION
ABANDONED SEPTIC

STA 18+593 0.0 LT
MAINTAIN TEMPORARY COVER ON CB
AND PIPE. REMOVE PIPE WHEN
NO LONGER NEEDED

MATCH LINE STA 18+590

MATCH LINE STA 18+750



WETLAND #12
CLASS 2
PSS/EMY

LEGEND	
	PHASE II CONSTRUCTION
	PHASE II TRAFFIC
	SSL SINGLE SOLID WHITE LINE 100mm WIDE (TYPE II TAPE)
	DSL DOUBLE SOLID YELLOW LINE 100mm WIDE (TYPE II TAPE)



PHASE II
TRAFFIC CONTROL PLAN 15

PROJECT NAME: BRANDON	PLOT DATE: 9/3/2009
PROJECT NUMBER: NH 019-3(495)	DRAWN BY: NLL
FILE NAME: zb008s5+tcp43.dgn	CHECKED BY: KLS
PROJECT LEADER: CRB	SHEET 324 OF 546
DESIGNED BY: PTS	
CLD 02-0149	