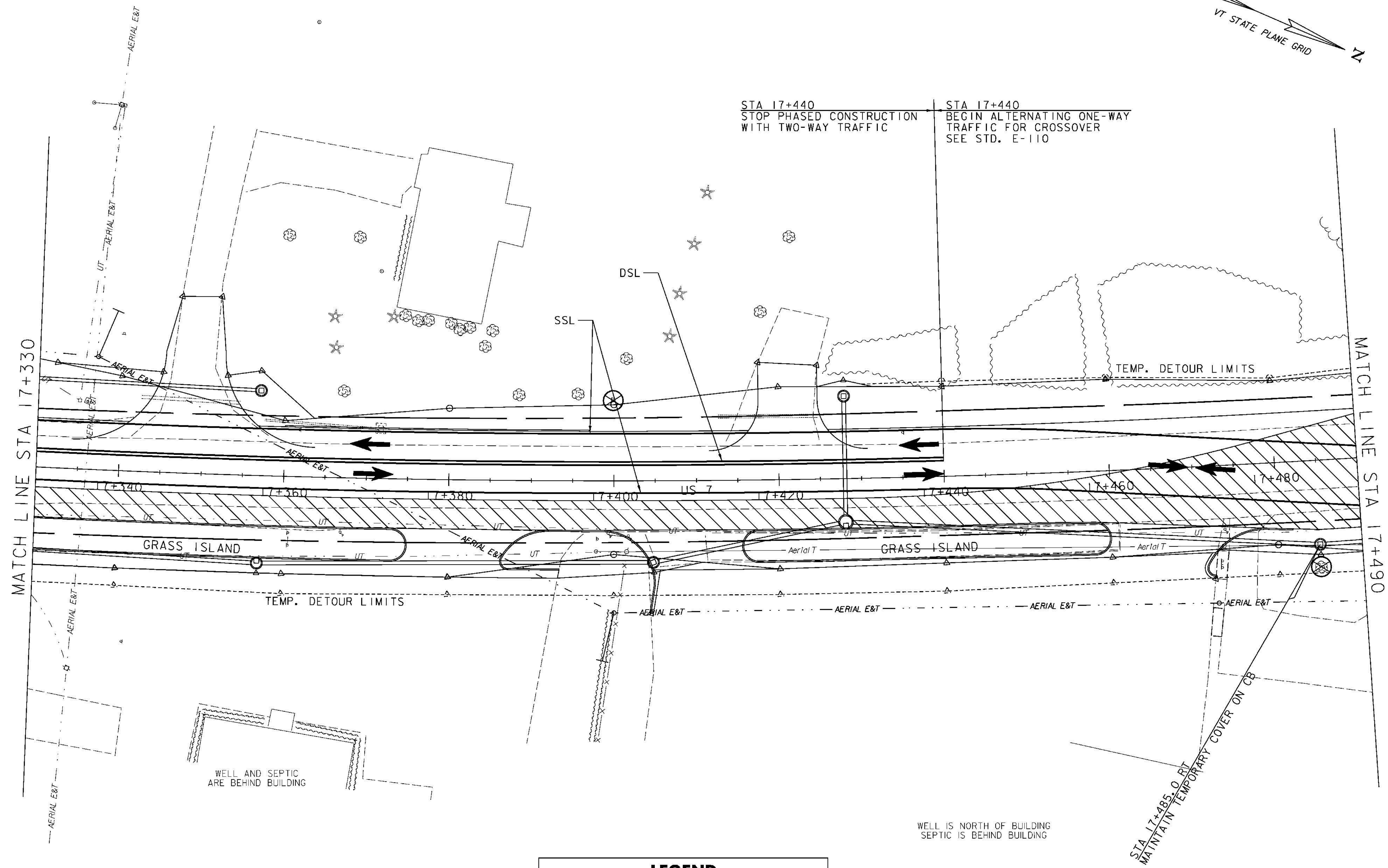


STA 17+440
 STOP PHASED CONSTRUCTION WITH TWO-WAY TRAFFIC

STA 17+440
 BEGIN ALTERNATING ONE-WAY TRAFFIC FOR CROSSOVER SEE STD. E-110



MATCH LINE STA 17+330

MATCH LINE STA 17+490

WELL AND SEPTIC ARE BEHIND BUILDING

WELL IS NORTH OF BUILDING SEPTIC IS BEHIND BUILDING

STA 17+485.0 RT
 MAINTAIN TEMPORARY COVER ON CB

| LEGEND | |
|--------|--|
| | PHASE II CONSTRUCTION |
| | PHASE II TRAFFIC |
| | SSL SINGLE SOLID WHITE LINE 100mm WIDE (TYPE II TAPE) |
| | DSL DOUBLE SOLID YELLOW LINE 100mm WIDE (TYPE II TAPE) |



PHASE II
 TRAFFIC CONTROL PLAN 7

| | |
|-------------------------------|---------------------|
| PROJECT NAME: BRANDON | PLOT DATE: 9/3/2009 |
| PROJECT NUMBER: NH 019-3(495) | DRAWN BY: NLL |
| FILE NAME: zb008s5+tcp35.dgn | CHECKED BY: KLS |
| PROJECT LEADER: CRB | SHEET 316 OF 546 |
| DESIGNED BY: PTS | |
| CLD 02-0149 | |