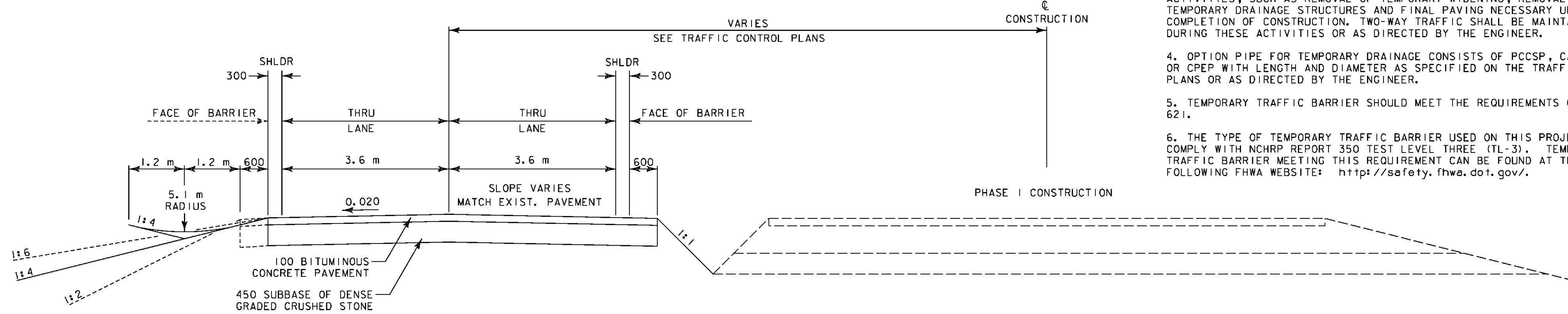
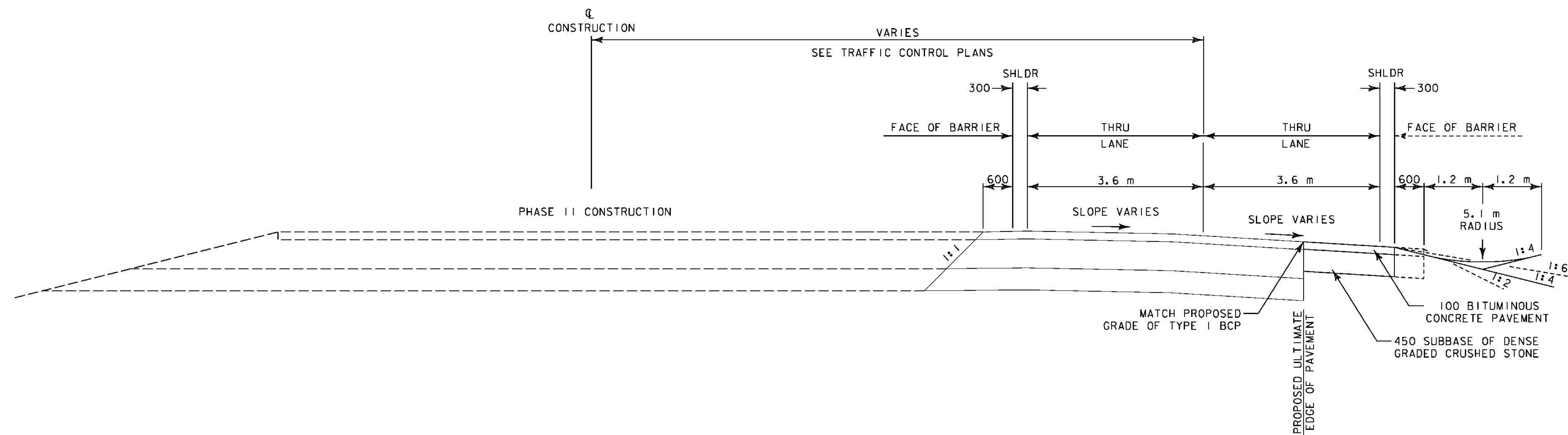


NOTES

1. DETAILS DEPICT PHASE I TRAFFIC SHIFTED LEFT AND PHASE II TRAFFIC SHIFTED RIGHT. PHASE I AND PHASE II TRAFFIC MAY BE SHIFTED LEFT OR RIGHT DEPENDING ON LOCATION AS SHOWN ON THE PLANS.
2. TEMPORARY ONE-WAY ALTERNATING TRAFFIC FOR "CROSS-OVERS" AND APPROACHES ARE SHOWN ON THE PLANS. REFER TO STD E-110 FOR DETAILS.
3. THE TRAFFIC CONTROL PLANS DO NOT DEPICT ADDITIONAL CONSTRUCTION ACTIVITIES, SUCH AS REMOVAL OF TEMPORARY WIDENING, REMOVAL OF TEMPORARY DRAINAGE STRUCTURES AND FINAL PAVING NECESSARY UPON COMPLETION OF CONSTRUCTION. TWO-WAY TRAFFIC SHALL BE MAINTAINED DURING THESE ACTIVITIES OR AS DIRECTED BY THE ENGINEER.
4. OPTION PIPE FOR TEMPORARY DRAINAGE CONSISTS OF PCCSP, CAAP, RCP, OR CPEP WITH LENGTH AND DIAMETER AS SPECIFIED ON THE TRAFFIC CONTROL PLANS OR AS DIRECTED BY THE ENGINEER.
5. TEMPORARY TRAFFIC BARRIER SHOULD MEET THE REQUIREMENTS OF SECTION 621.
6. THE TYPE OF TEMPORARY TRAFFIC BARRIER USED ON THIS PROJECT SHALL COMPLY WITH NCHRP REPORT 350 TEST LEVEL THREE (TL-3). TEMPORARY TRAFFIC BARRIER MEETING THIS REQUIREMENT CAN BE FOUND AT THE FOLLOWING FHWA WEBSITE: <http://safety.fhwa.dot.gov/>.



US 7 – TEMPORARY WIDENING FOR PHASE I TRAFFIC
(NOT TO SCALE)



US 7 – TEMPORARY WIDENING FOR PHASE II TRAFFIC
(NOT TO SCALE)

TRAFFIC CONTROL
TYPICAL SECTIONS

PROJECT NAME:	BRANDON
PROJECT NUMBER:	NH 019-3(495)
FILE NAME:	zb008s5-topdet01.dgn
PLOT DATE:	9/3/2009
PROJECT LEADER:	CRB
DRAWN BY:	NLL
DESIGNED BY:	PTS
CHECKED BY:	KLS
CLD 02-0149	SHEET 279 OF 546