



EXTENSION SERVICE AND CURB STOP (25 mm)
CORPORATION STOP (25 mm)
STA 20+731 RT (NON-PART.)
STA 20+792 RT (PART.)

SEAMLESS COPPER WATER TUBE (25 mm)
STA 20+730 RT - 20+731 RT (NON-PART.)
STA 20+792 RT - 20+792 RT (PART.)

PVC SEWER PIPE (100 mm)
STA 20+799.4 RT - 20+804.8 LT (PART.)

INSULATION BOARD
STA 20+740 RT (NON-PART.)
STA 20+780 LT (PART.)
STA 20+780 RT (PART.)

PVC SEWER PIPE (150 mm)
STA 20+785.5 LT - 20+786.7 LT (PART.)

PVC SEWER PIPE (200 mm)
STA 20+747.5 LT - 20+777.6 LT (NON-PART.)
STA 20+777.6 LT - 20+806.6 LT (PART.)

PVC SEWER PIPE (200 mm) (AWWA C-900)
STA 20+738.0 RT - 20+746.6 LT (NON-PART.)

REMOVE HYDRANT
STA 20+789.1 LT (PART.)

SANITARY SEWER MANHOLE (1200 mm)
CAST IRON COVER WITH FRAME, SEWER
STA 20+737.5 RT (NON-PART.)
STA 20+747.0 LT (NON-PART.)
STA 20+807.2 LT (PART.)

DUCTILE IRON PIPE, CEMENT-LINED
(150 mm) (CLASS 52)
STA 20+696.0 RT - 20+696.0 RT (NON-PART.)
STA 20+791.4 RT - 20+791.4 LT (PART.)

DUCTILE IRON PIPE, CEMENT-LINED
(200 mm) (CLASS 52)
STA 20+696.0 RT - 20+777.6 RT (NON-PART.)
STA 20+777.6 RT - 20+800.0 RT (PART.)

HYDRANT
STA 20+789.1 LT (PART.)

GATE VALVE WITH
VALVE BOX (150 mm)
STA 20+696.0 RT (NON-PART.)
STA 20+798.1 LT (PART.)

STA 20+820.000 AHD
END APPROACH

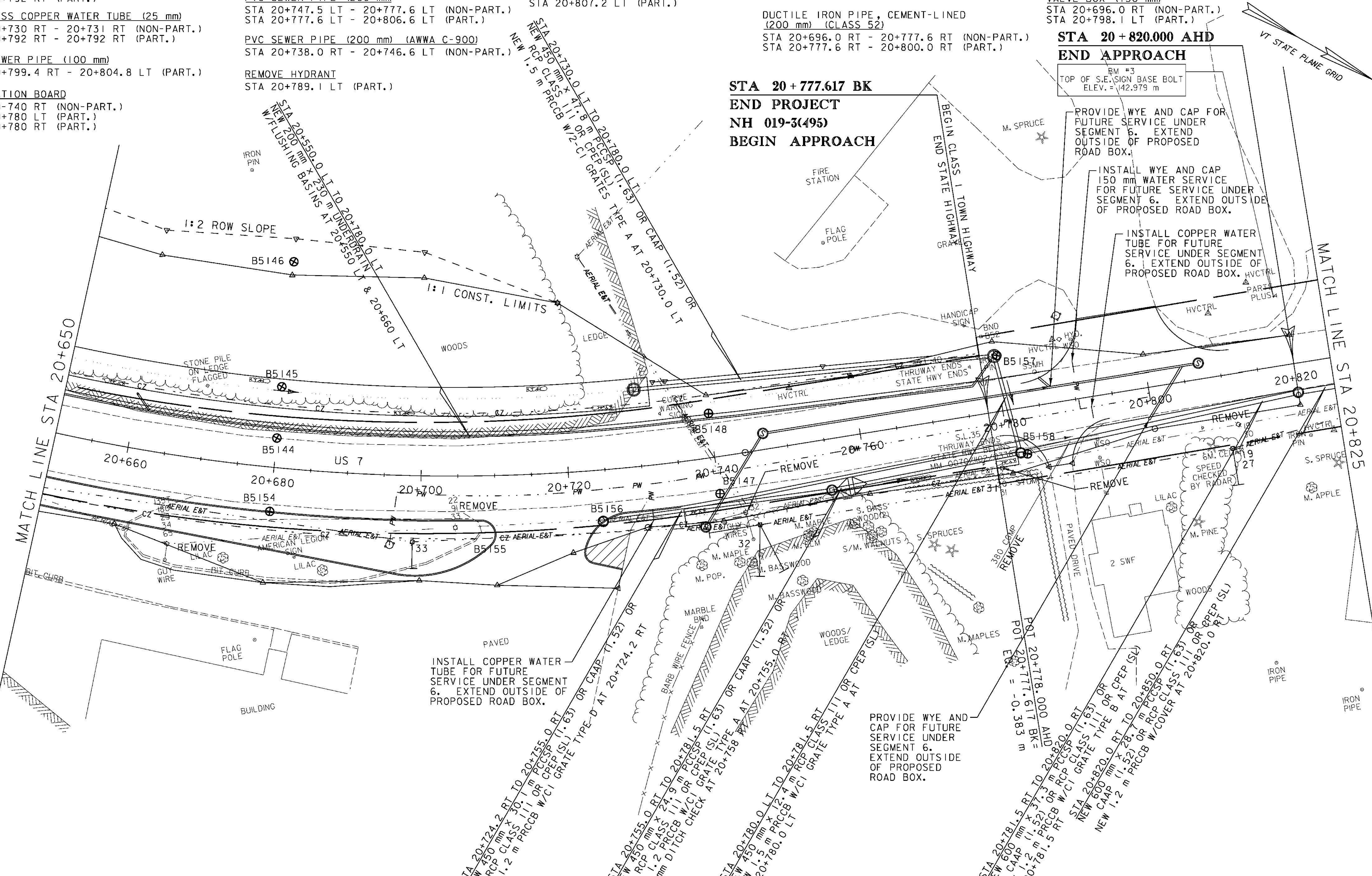
BM #3
TOP OF S.E. SIGN BASE BOLT
ELEV. = 42.979 m

PROVIDE WYE AND CAP FOR
FUTURE SERVICE UNDER
SEGMENT 6. EXTEND
OUTSIDE OF PROPOSED
ROAD BOX.

INSTALL WYE AND CAP
150 mm WATER SERVICE
FOR FUTURE SERVICE UNDER
SEGMENT 6. EXTEND OUTSIDE
OF PROPOSED ROAD BOX.

INSTALL COPPER WATER
TUBE FOR FUTURE
SERVICE UNDER SEGMENT
6. EXTEND OUTSIDE OF
PROPOSED ROAD BOX.

STA 20+777.617 BK
END PROJECT
NH 019-3(495)
BEGIN APPROACH



NOTE:
1. WATER - BRANDON FIRE DISTRICT #1
2. SEWER - TOWN OF BRANDON, WASTEWATER TREATMENT.
3. MAINTAIN EXISTING WATER AND SEWER SERVICES.
INSTALL NEW WATER AND SEWER AS SHOWN AND CAP.
CONNECTION TO NEW WATER AND SEWER WILL BE COMPLETED
DURING SEGMENT 6 CONSTRUCTION.



| | |
|---|------------------|
| DRAINAGE & UTILITY LAYOUT 28 | |
| PROJECT NAME: | BRANDON |
| PROJECT NUMBER: | NH 019-3(495) |
| FILE NAME: | z008s5-drn28.dgn |
| PROJECT LEADER: | CRB |
| DESIGNED BY: | DAM |
| CLD 02-0149 | |
| PLOT DATE: | 9/3/2009 |
| DRAWN BY: | NLL |
| CHECKED BY: | PTS |
| | SHEET 208 OF 546 |