

STONE FILL, TYPE I (IN DITCHES)
 GEOTEXTILE UNDER STONE FILL
 STA 17+198 - 17+267 RT

TEMPORARY EROSION MATTING (IN DITCHES)
 STA 17+242 - 17+320 LT
 STA 17+275 - 17+310 RT

PROJECT DEMARCATON FENCE
 STA 17+170 - 17+315 RT
 STA 17+190 - 17+330 LT

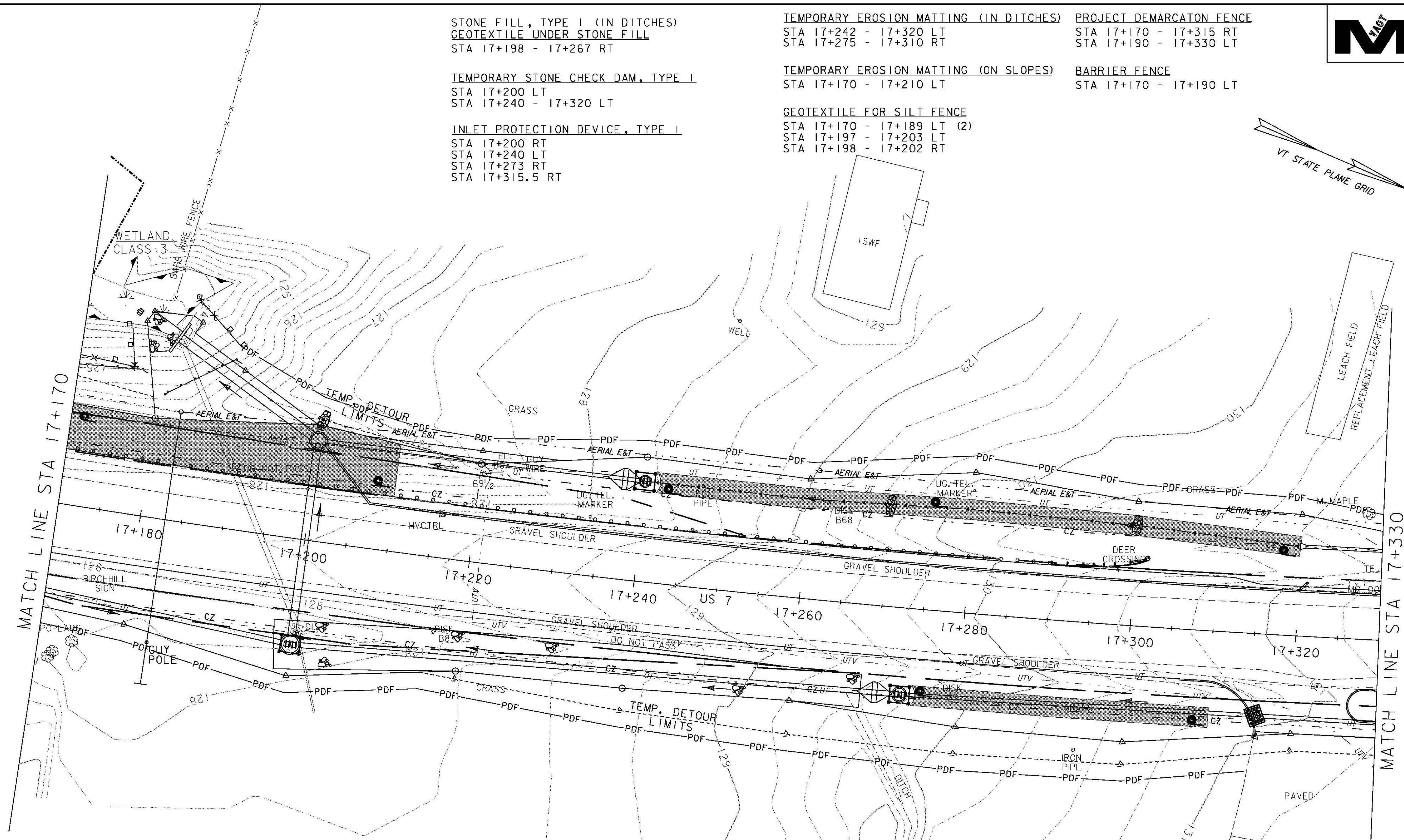
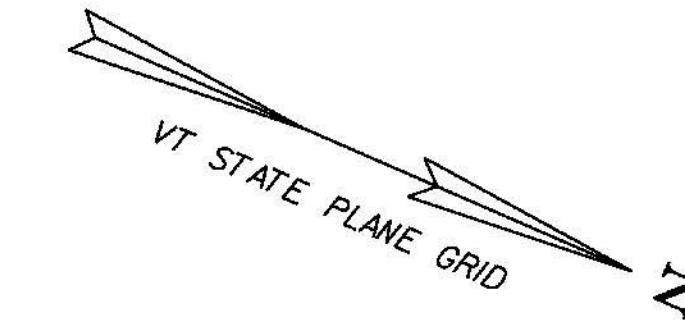
TEMPORARY STONE CHECK DAM, TYPE I
 STA 17+200 LT
 STA 17+240 - 17+320 LT

TEMPORARY EROSION MATTING (ON SLOPES)
 STA 17+170 - 17+210 LT

BARRIER FENCE
 STA 17+170 - 17+190 LT

INLET PROTECTION DEVICE, TYPE I
 STA 17+200 RT
 STA 17+240 LT
 STA 17+273 RT
 STA 17+315.5 RT

GEOTEXTILE FOR SILT FENCE
 STA 17+170 - 17+189 LT (2)
 STA 17+197 - 17+203 LT
 STA 17+198 - 17+202 RT



MATCH LINE STA 17+170

MATCH LINE STA 17+330

LEGEND	
	ROADSIDE DITCH/SLOPE PROTECTION
	DETOUR SLOPE LIMITS
	PERMANENT SLOPE LIMITS
	SILT FENCE
	INLET PROTECTION DEVICE, TYPE I
	PIPE INLET PROTECTION
	EROSION MATTING
	CHECK DAM - TEMPORARY
	BARRIER FENCE
	PROJECT DEMARCATON FENCE
	FILTER CURTAIN

NOTES:

- SILT FENCE LOCATIONS SHOWN ON THIS DRAWING ARE APPROXIMATE. THE CONTRACTOR IS RESPONSIBLE FOR INSTALLING THE SILT FENCE IN ACCORDANCE WITH THE GUIDELINES SET FORTH IN THE VERMONT GENERAL PERMIT FOR STORMWATER RUNOFF FROM CONSTRUCTION SITES. THE RESIDENT ENGINEER AND ON SITE COORDINATOR SHALL APPROVE ALL SILT FENCE LOCATIONS PRIOR TO PLACEMENT.
- FOR EROSION PREVENTION AND SEDIMENT CONTROL PLAN GENERAL NOTES, SEE SHEETS 147 - 148, AND DETAILS, SEE SHEETS 177 - 180.



EROSION CONTROL PLAN 6

PROJECT NAME: BRANDON	PLOT DATE: 9/3/2009
PROJECT NUMBER: NH 019-3(495)	DRAWN BY: NLL
FILE NAME: zb008s5-ec06.dgn	CHECKED BY: PTS
PROJECT LEADER: CRB	SHEET 154 OF 546
DESIGNED BY: NLL	
CLD 02-0149	