

STONE FILL, TYPE I (IN DITCHES)  
 GEOTEXTILE UNDER STONE FILL  
 STA 16+530 - 16+560 RT

STONE FILL, TYPE II (ON SLOPES)  
 GEOTEXTILE UNDER STONE FILL  
 STA 16+530 - 16+610 LT

TEMPORARY STONE CHECK DAM, TYPE I  
 STA 16+530 - 16+620 LT  
 STA 16+604 - 16+690 RT

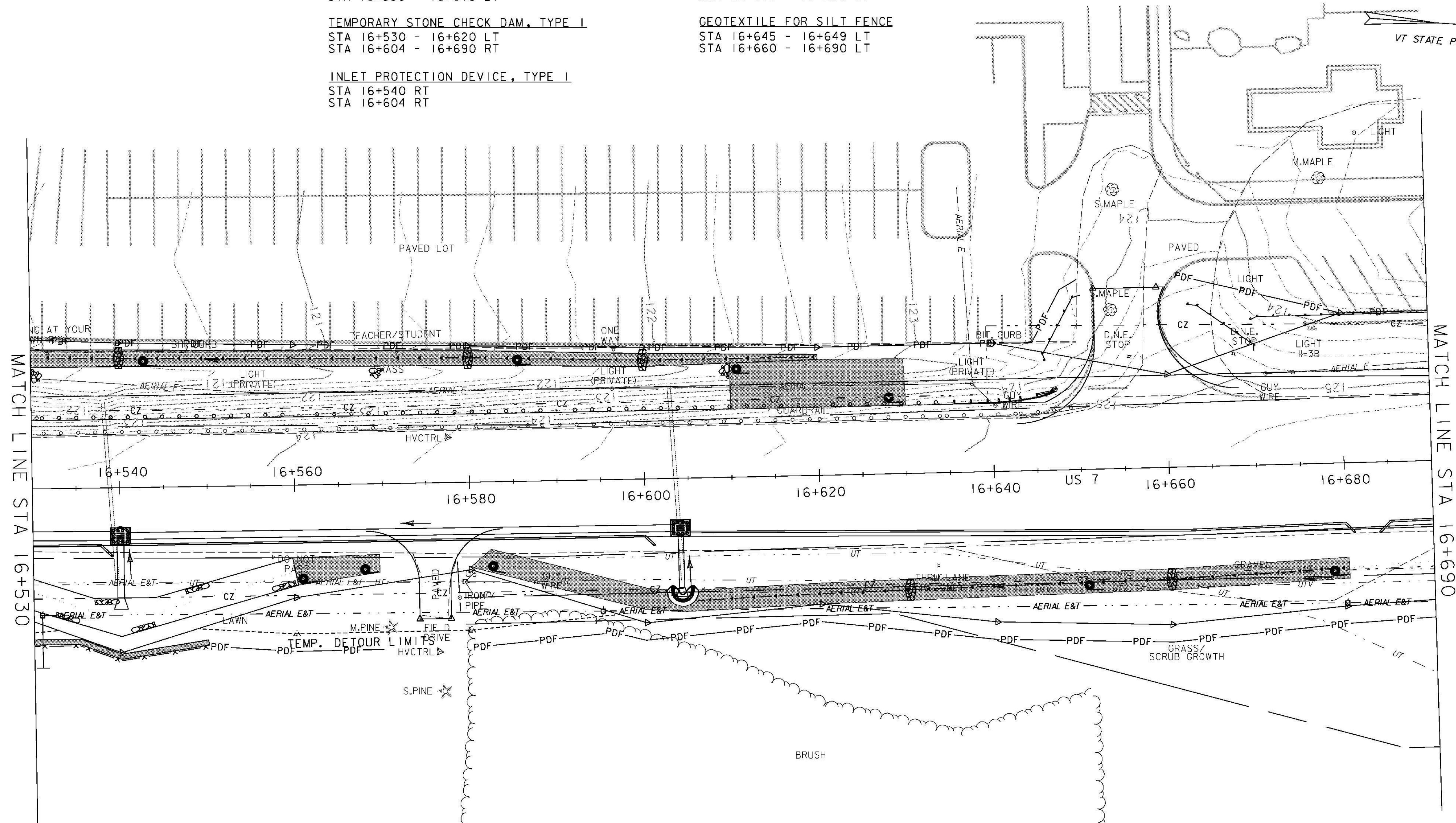
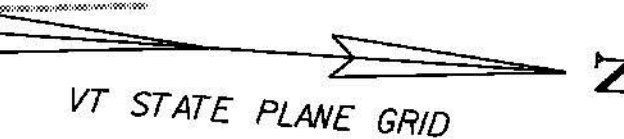
INLET PROTECTION DEVICE, TYPE I  
 STA 16+540 RT  
 STA 16+604 RT

TEMPORARY EROSION MATTING (IN DITCHES)  
 STA 16+530 - 16+620 LT  
 STA 16+560 - 16+570 RT  
 STA 16+580 - 16+680 RT

TEMPORARY EROSION MATTING (ON SLOPES)  
 STA 16+610 - 16+630 LT

GEOTEXTILE FOR SILT FENCE  
 STA 16+645 - 16+649 LT  
 STA 16+660 - 16+690 LT

PROJECT DEMARCATION FENCE  
 STA 16+530 - 16+651 LT  
 STA 16+550 - 16+570 RT  
 STA 16+580 - 16+690 RT  
 STA 16+660 - 16+690 LT



LEGEND	
	ROADSIDE DITCH/SLOPE PROTECTION
	DETOUR SLOPE LIMITS
	PERMANENT SLOPE LIMITS
	SILT FENCE
	INLET PROTECTION DEVICE, TYPE I
	PIPE INLET PROTECTION
	EROSION MATTING
	CHECK DAM - TEMPORARY
	BARRIER FENCE
	PROJECT DEMARCATION FENCE
	FILTER CURTAIN

**NOTES:**

- SILT FENCE LOCATIONS SHOWN ON THIS DRAWING ARE APPROXIMATE. THE CONTRACTOR IS RESPONSIBLE FOR INSTALLING THE SILT FENCE IN ACCORDANCE WITH THE GUIDELINES SET FORTH IN THE VERMONT GENERAL PERMIT FOR STORMWATER RUNOFF FROM CONSTRUCTION SITES. THE RESIDENT ENGINEER AND ON SITE COORDINATOR SHALL APPROVE ALL SILT FENCE LOCATIONS PRIOR TO PLACEMENT.
- FOR EROSION PREVENTION AND SEDIMENT CONTROL PLAN GENERAL NOTES, SEE SHEETS 147 - 148, AND DETAILS, SEE SHEETS 177 - 180.



**EROSION CONTROL PLAN 2**

PROJECT NAME: BRANDON	PLOT DATE: 9/3/2009
PROJECT NUMBER: NH 019-3(495)	DRAWN BY: NLL
FILE NAME: zb008s5-ec02.dgn	CHECKED BY: PTS
PROJECT LEADER: CRB	SHEET 150 OF 546
DESIGNED BY: NLL	
CLD 02-0149	