

STONE FILL, TYPE I (IN DITCHES)
 GEOTEXTILE UNDER STONE FILL
 STA 16+480 - 16+498 RT
 STA 16+520 - 16+530 RT

STONE FILL, TYPE II (ON SLOPES)
 GEOTEXTILE UNDER STONE FILL
 STA 16+520 - 16+530 LT

TEMPORARY STONE CHECK DAM, TYPE I
 STA 16+460 RT
 STA 16+493 - 16+530 LT

INLET PROTECTION DEVICE, TYPE I
 STA 16+435 RT
 STA 16+495.5 RT

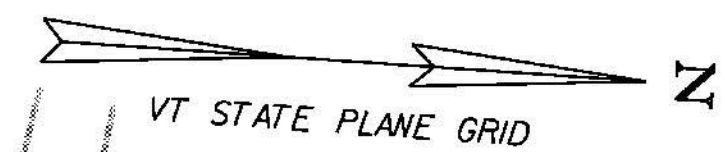
TEMPORARY EROSION MATTING (ON SLOPES)
 STA 16+450 - 16+480 RT
 STA 16+495 - 16+520 LT

TEMPORARY EROSION MATTING (IN DITCHES)
 STA 16+440 - 16+480 RT
 STA 16+492 - 16+530 LT
 STA 16+510 - 16+520 RT

PROJECT DEMARCATION FENCE
 STA 16+386 - 16+428 RT
 STA 16+434 - 16+490 RT
 STA 16+450 - 16+472 LT
 STA 16+479 - 16+491 LT
 STA 16+494 - 16+530 LT

BARRIER FENCE
 STA 16+418 - 16+450 LT

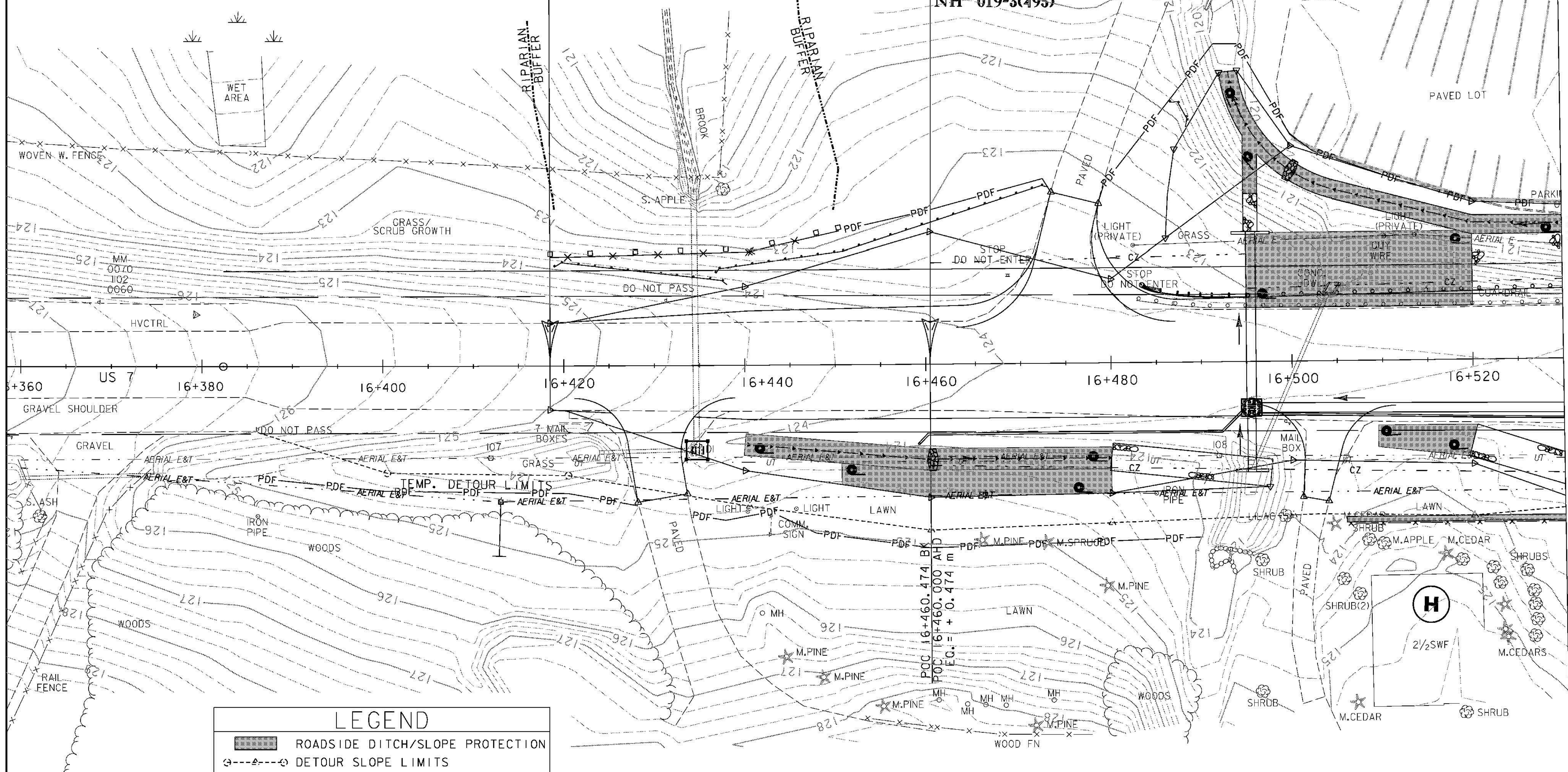
GEOTEXTILE FOR SILT FENCE
 STA 16+419 - 16+473 LT
 STA 16+488 - 16+489 LT



STA 16+418.474 BK
 BEGIN APPROACH

STA 16+460.000 AHD
 END APPROACH
 BEGIN PROJECT
 NH 019-3(495)

MATCH LINE STA 16+530



LEGEND

- ROADSIDE DITCH/SLOPE PROTECTION
- DETOUR SLOPE LIMITS
- PERMANENT SLOPE LIMITS
- SILT FENCE
- INLET PROTECTION DEVICE, TYPE I
- PIPE INLET PROTECTION
- EROSION MATTING
- CHECK DAM - TEMPORARY
- BARRIER FENCE
- PROJECT DEMARCATION FENCE
- FILTER CURTAIN

- NOTES:**
1. SILT FENCE LOCATIONS SHOWN ON THIS DRAWING ARE APPROXIMATE. THE CONTRACTOR IS RESPONSIBLE FOR INSTALLING THE SILT FENCE IN ACCORDANCE WITH THE GUIDELINES SET FORTH IN THE VERMONT GENERAL PERMIT FOR STORMWATER RUNOFF FROM CONSTRUCTION SITES. THE RESIDENT ENGINEER AND ON SITE COORDINATOR SHALL APPROVE ALL SILT FENCE LOCATIONS PRIOR TO PLACEMENT.
 2. FOR EROSION PREVENTION AND SEDIMENT CONTROL PLAN GENERAL NOTES, SEE SHEETS 147 - 148, AND DETAILS, SEE SHEETS 177 - 180.



EROSION CONTROL PLAN I

PROJECT NAME: BRANDON		PLOT DATE: 9/3/2009	
PROJECT NUMBER: NH 019-3(495)		DRAWN BY: NLL	
FILE NAME: zb008s5-ec01.dgn	DESIGNED BY: NLL	CHECKED BY: PTS	SHEET 149 OF 546
PROJECT LEADER: CRB	CLD 02-0149		