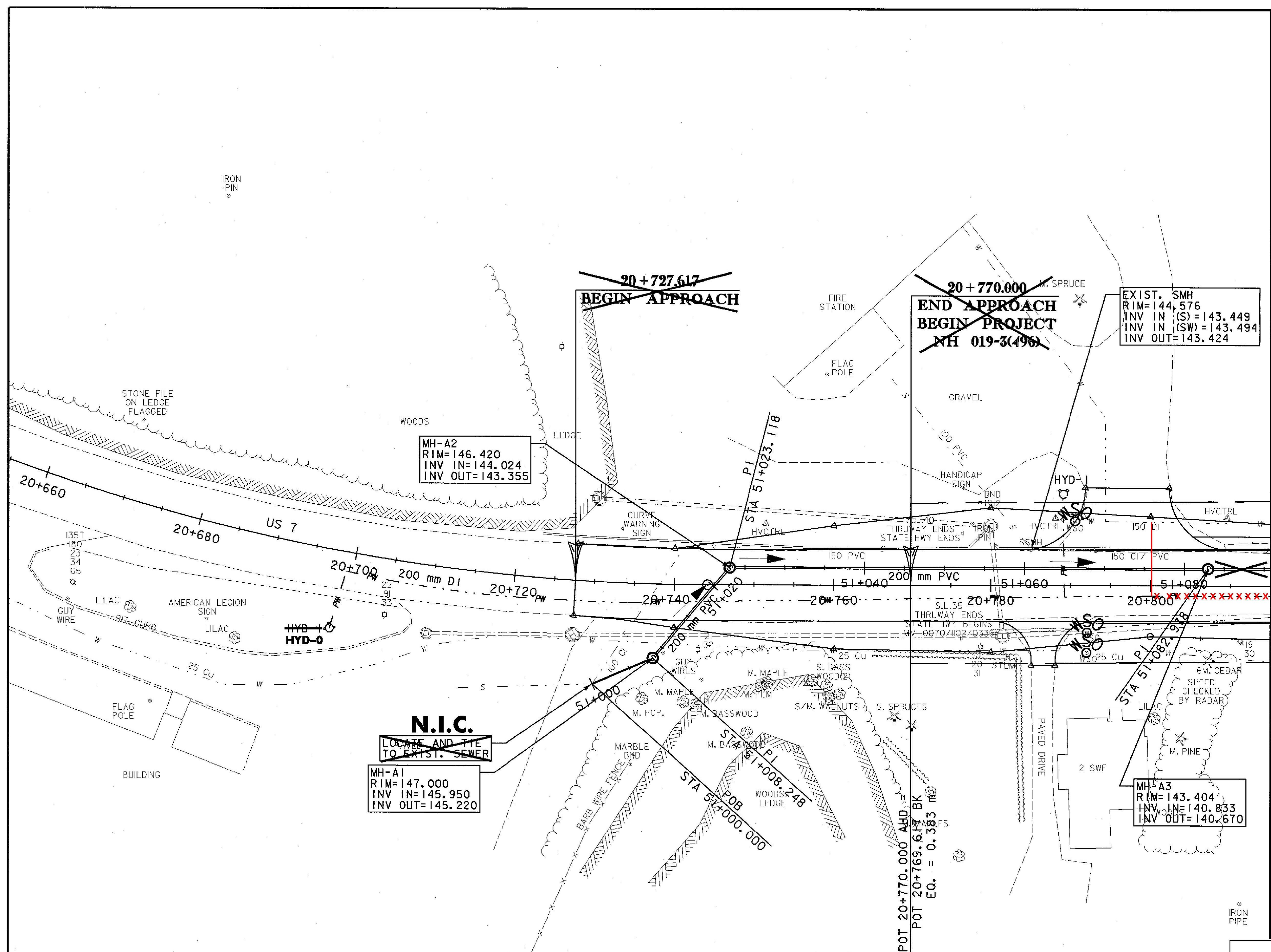


NOTE TO CONTRACTOR
SEWER CONSTRUCTION - SEWER MANHOLES A1, A2, A3 AND PIPE BETWEEN THESE MANHOLES AND SERVICE CONNECTIONS TO THE EDGE OF PAVEMENT SHALL BE INSTALLED IN THE DRY AS DETAILED IN THE PLANS IS PART OF CONTRACT NH 019-3(495). CONNECTIONS TO EXISTING SERVICES AND SANITARY SEWER SYSTEM WILL BE MADE UNDER BRANDON NH 019-3(496).

WATER CONSTRUCTION - WATER LINE BETWEEN HYD-0 AND STA. 20+800 SHALL BE INSTALLED IN THE DRY AS DETAILED IN THE PLANS. SERVICE CONNECTIONS TO THE EDGE OF PAVEMENT WILL BE INSTALLED UNDER THIS CONTRACT. HYD-0 AND CONNECTIONS TO THE EXISTING WATER SYSTEM WILL BE MADE UNDER BRANDON NH 019-3(496).

MATCH LINE 20+815



MH-A2
 RIM=146.420
 INV IN=144.024
 INV OUT=143.355

N.I.C.
 LOCATE AND TIE
 TO EXIST. SEWER

MH-A1
 RIM=147.000
 INV IN=145.950
 INV OUT=145.220

EXIST. SMH
 RIM=144.576
 INV IN (S)=143.449
 INV IN (SW)=143.494
 INV OUT=143.424

MH-A3
 RIM=143.404
 INV IN=140.833
 INV OUT=140.670

IRON PIPE

3	AUG. 2009	MODIFIED TO ADDRESS CONTRACT ADMINISTRATIONS COMMENTS
1	MAR. 2009	BRANDON SEGMENT 5 PLAN REVISIONS

WATER / SEWER PLAN 1

PROJECT NAME:	BRANDON
PROJECT NUMBER:	NH 019-3(496)
FILE NAME:	zb008s6-swr.dgn
PROJECT LEADER:	HJM
DESIGNED BY:	DAL
SHEET	145 OF 546
PLOT DATE:	1/9/2006
DRAWN BY:	KLS
CHECKED BY:	DAL
DEC SHEET	167 OF 437

