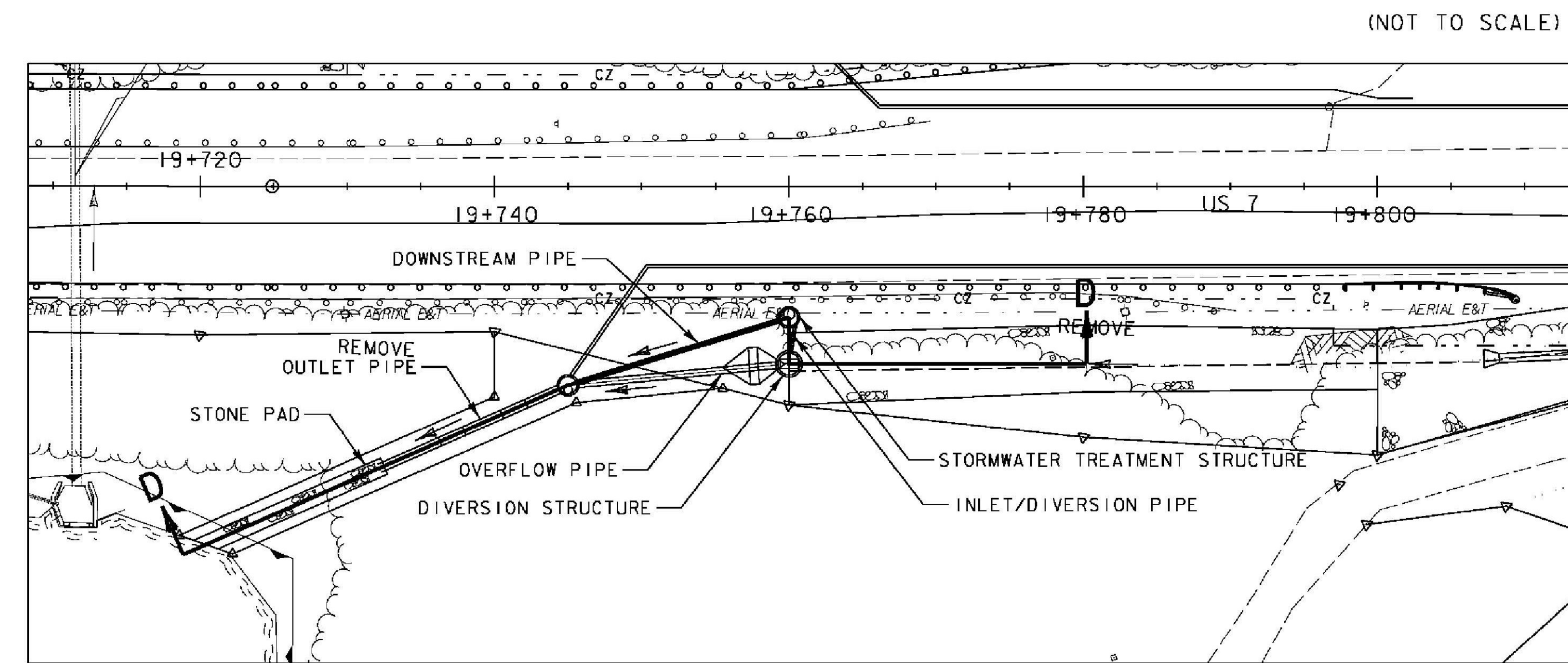
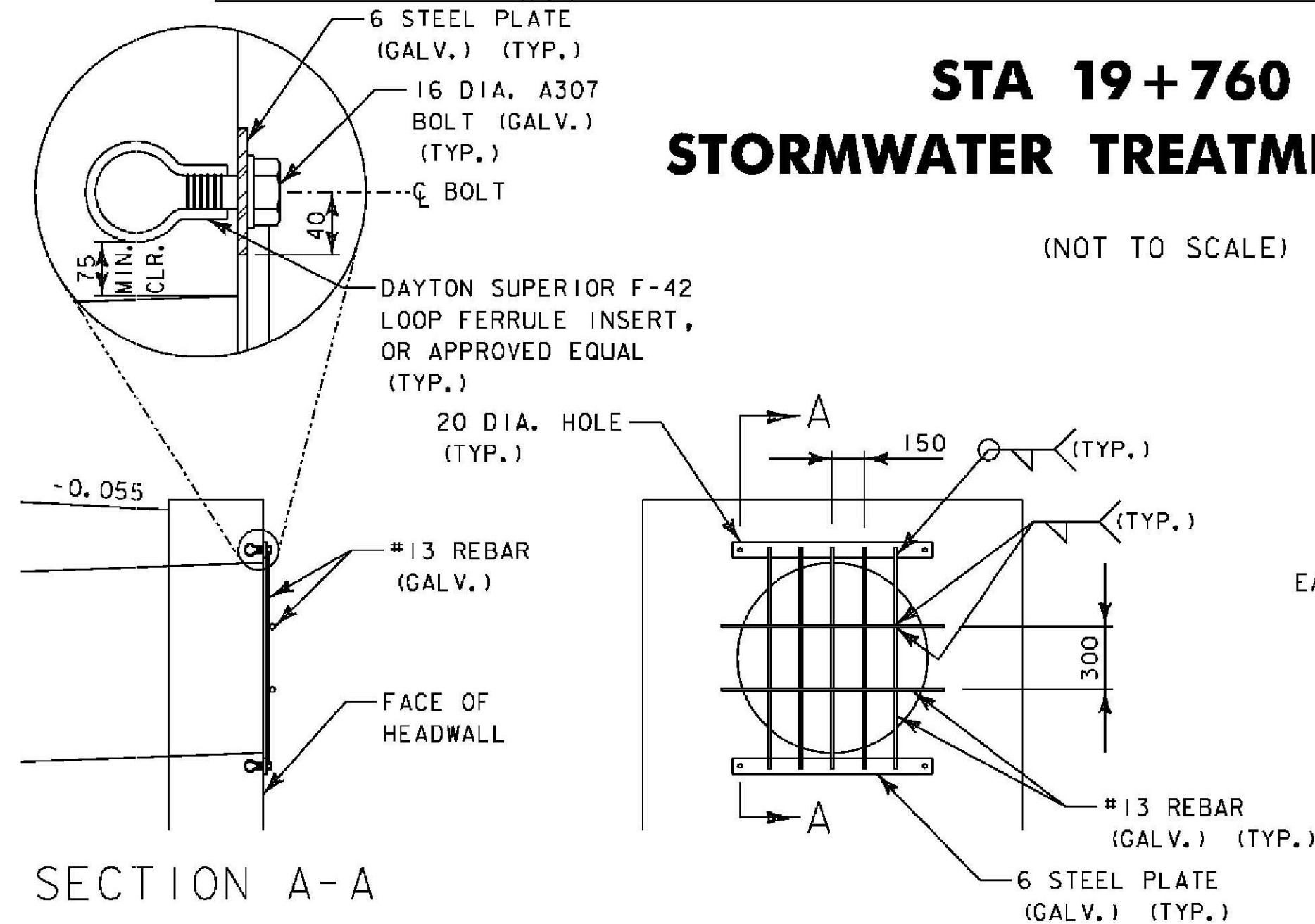


STORMWATER TREATMENT SYSTEM SECTION D-D



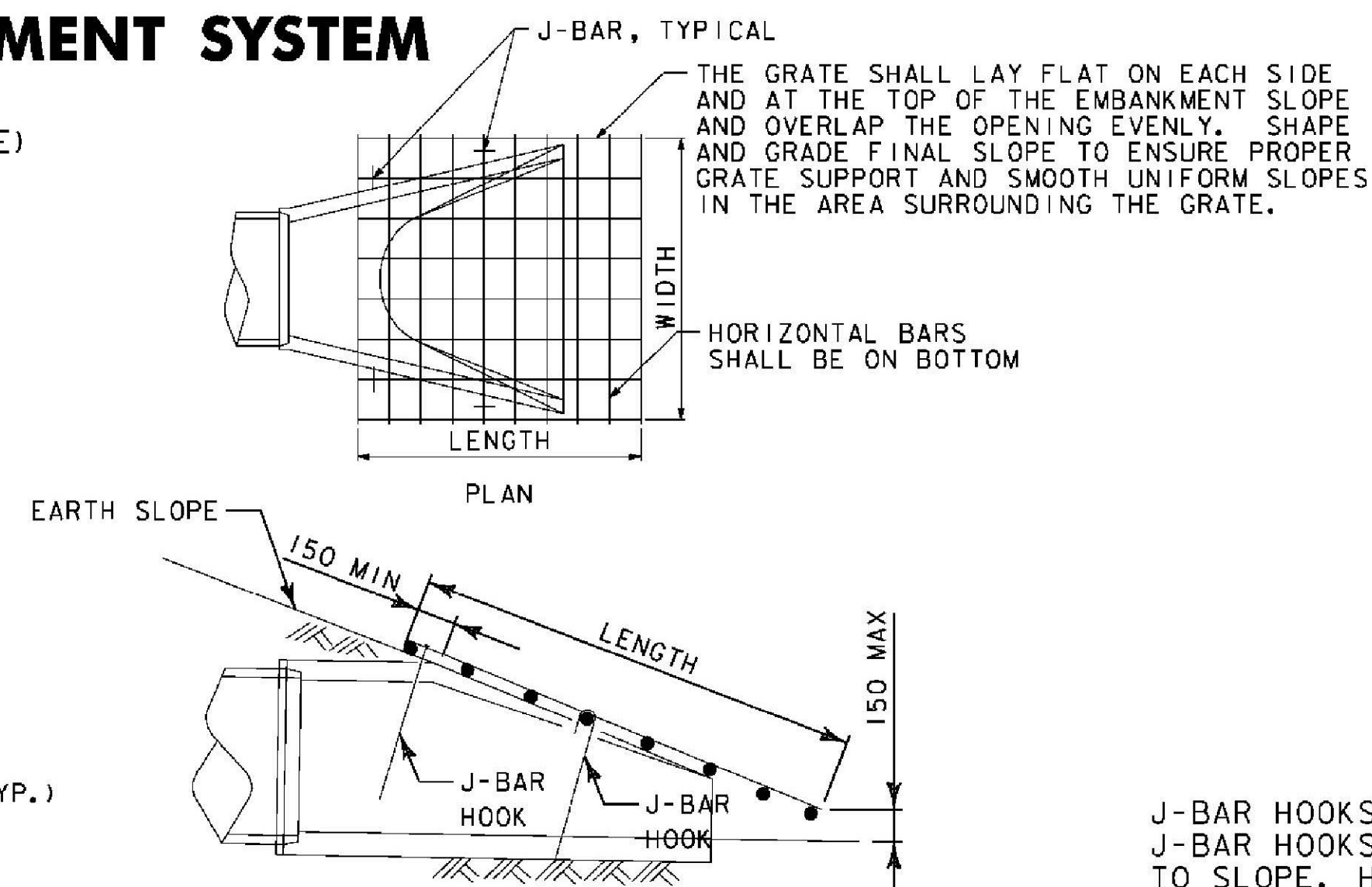
**STA 19+760 RT
STORMWATER TREATMENT SYSTEM**

(NOT TO SCALE)



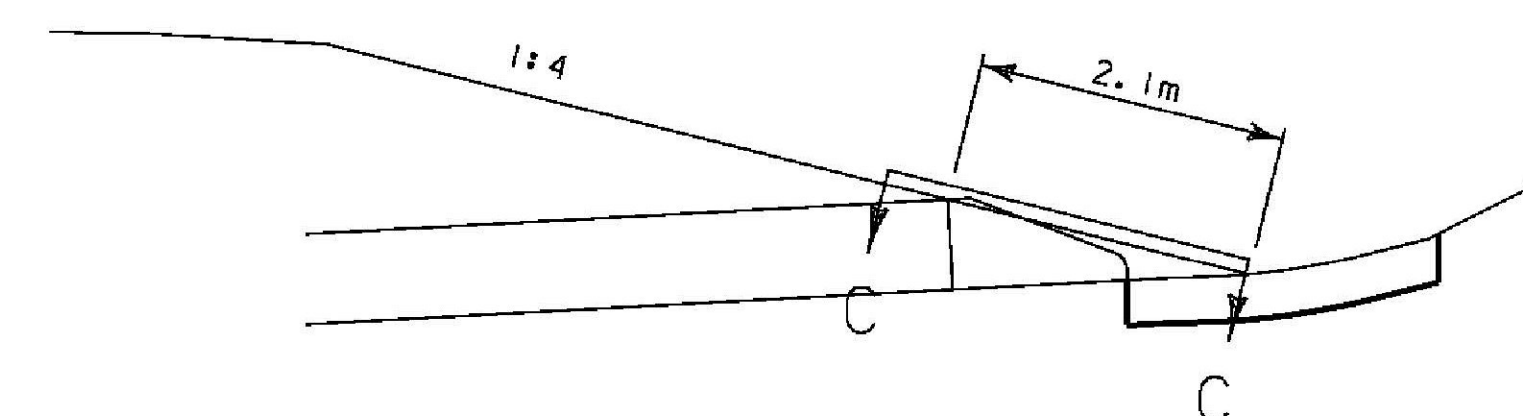
**STA 16+495.5 RT
CULVERT-END SAFETY GRATE DETAIL**

(NOT TO SCALE)



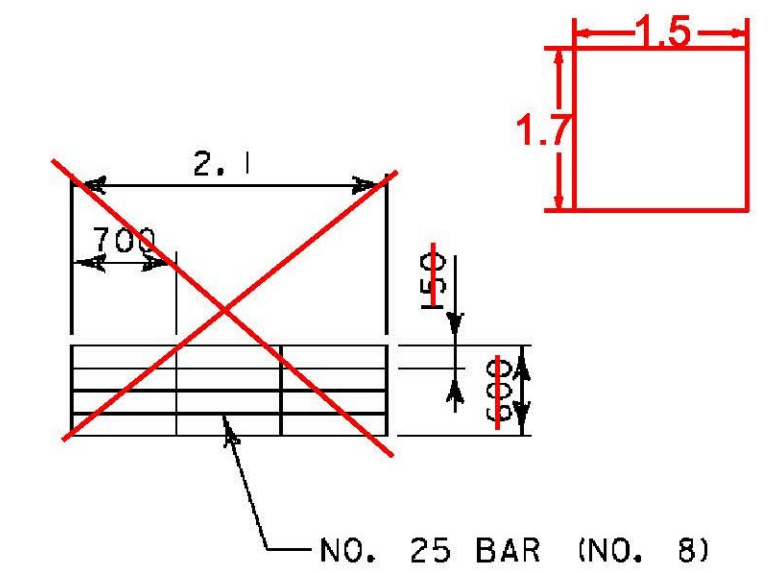
**REINFORCED CONCRETE END
SECTION SAFETY GRATE**

(NOT TO SCALE)

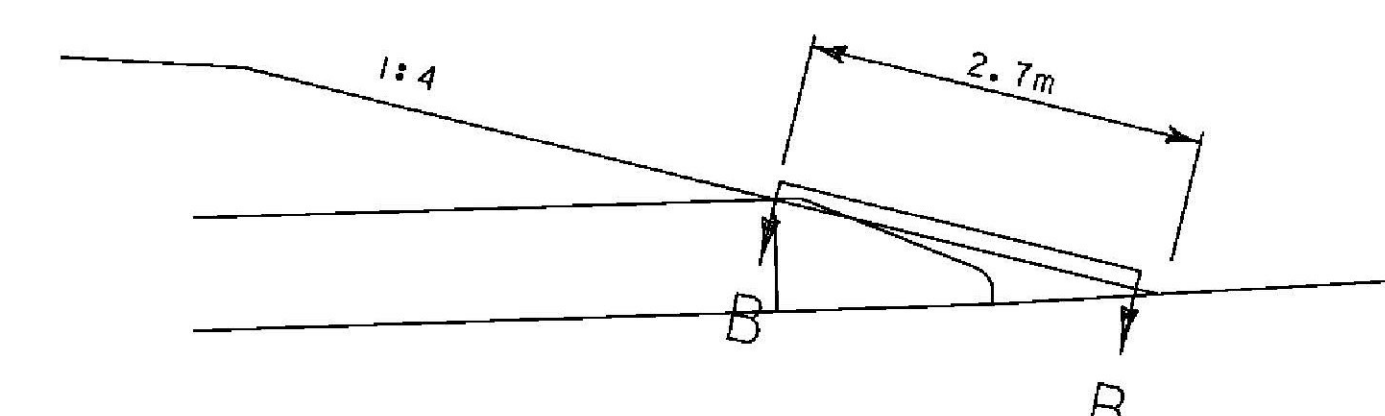


**STA 16+604.0 RT
CULVERT-END SAFETY GRATE DETAIL**

(NOT TO SCALE)

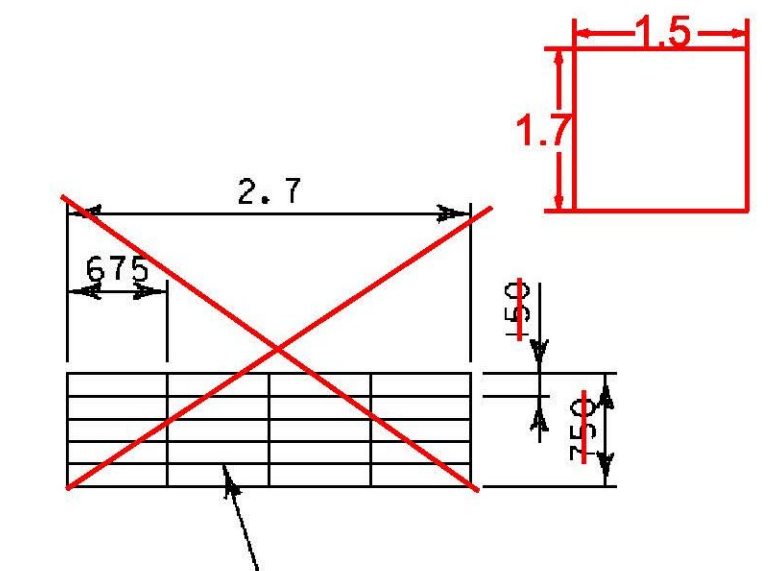


SECTION C-C



**STA 16+540.0 RT
CULVERT-END SAFETY GRATE DETAIL**

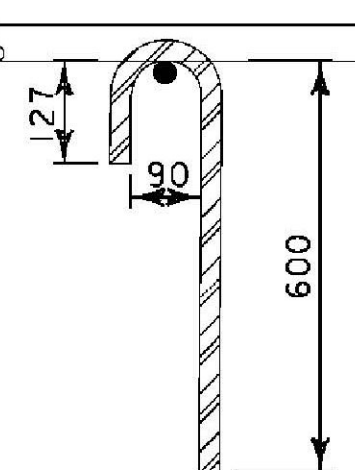
(NOT TO SCALE)



SECTION B-B

J-BAR HOOKS SHALL BE NO. 13 GALVANIZED. J-BAR HOOKS SHOWN INSTALLED PERPENDICULAR TO SLOPE. HOOKS MAY ALSO BE INSTALLED VERTICALLY. J-BAR SHALL BE WITH LONG LEGS ON THE DOWNHILL SIDE.

TYPICAL J-BAR HOOK



(NOT TO SCALE)

DRAINAGE DETAIL 3

PROJECT NAME: BRANDON	PLOT DATE: 9/3/2009
PROJECT NUMBER: NH 019-3(495)	DRAWN BY: NLL
FILE NAME: zb008s5-fr ml6.dgn	DESIGNED BY: DAM
PROJECT LEADER: CRB	CHECKED BY: PTS
CLD 02-0149	SHEET 137 OF 546