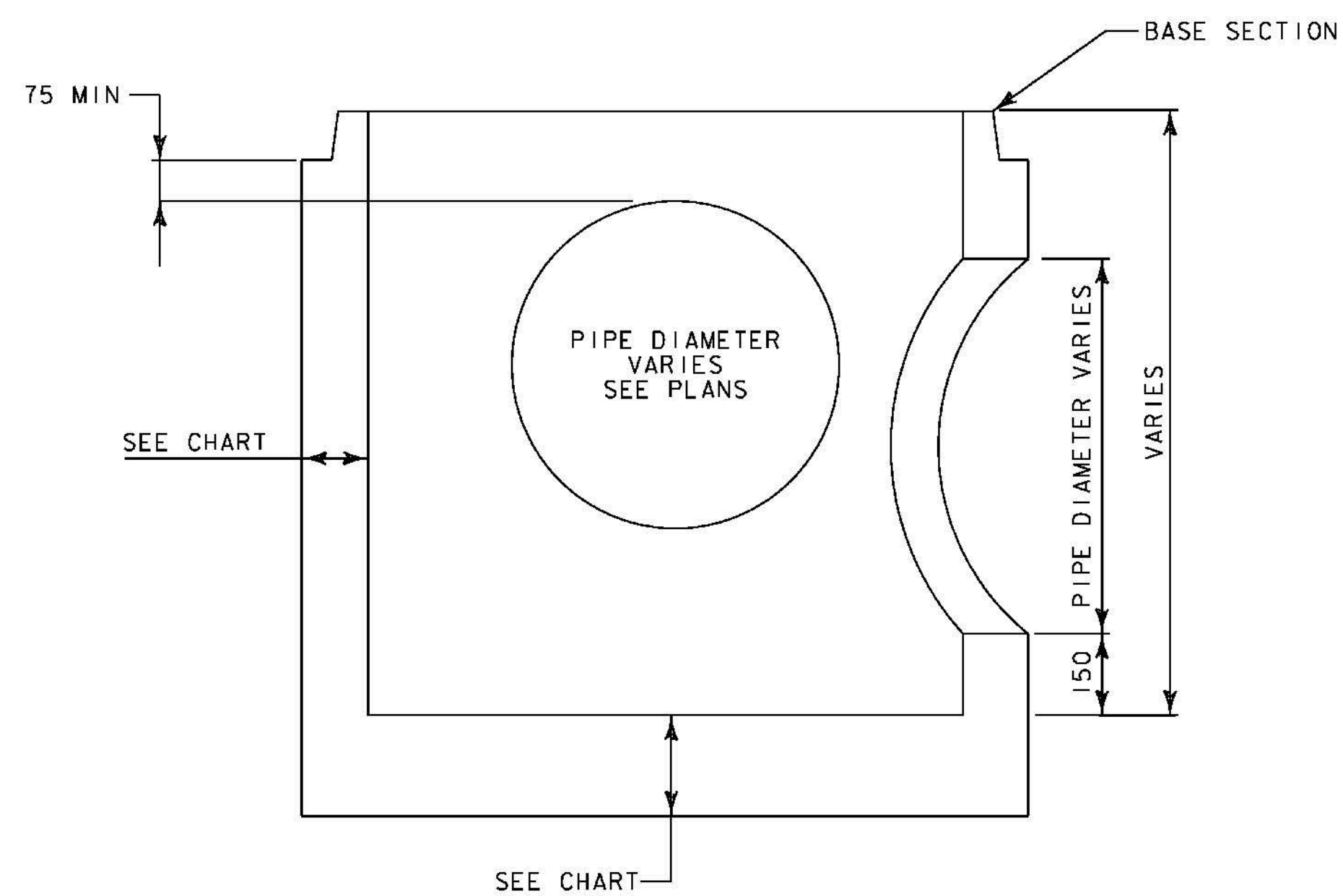
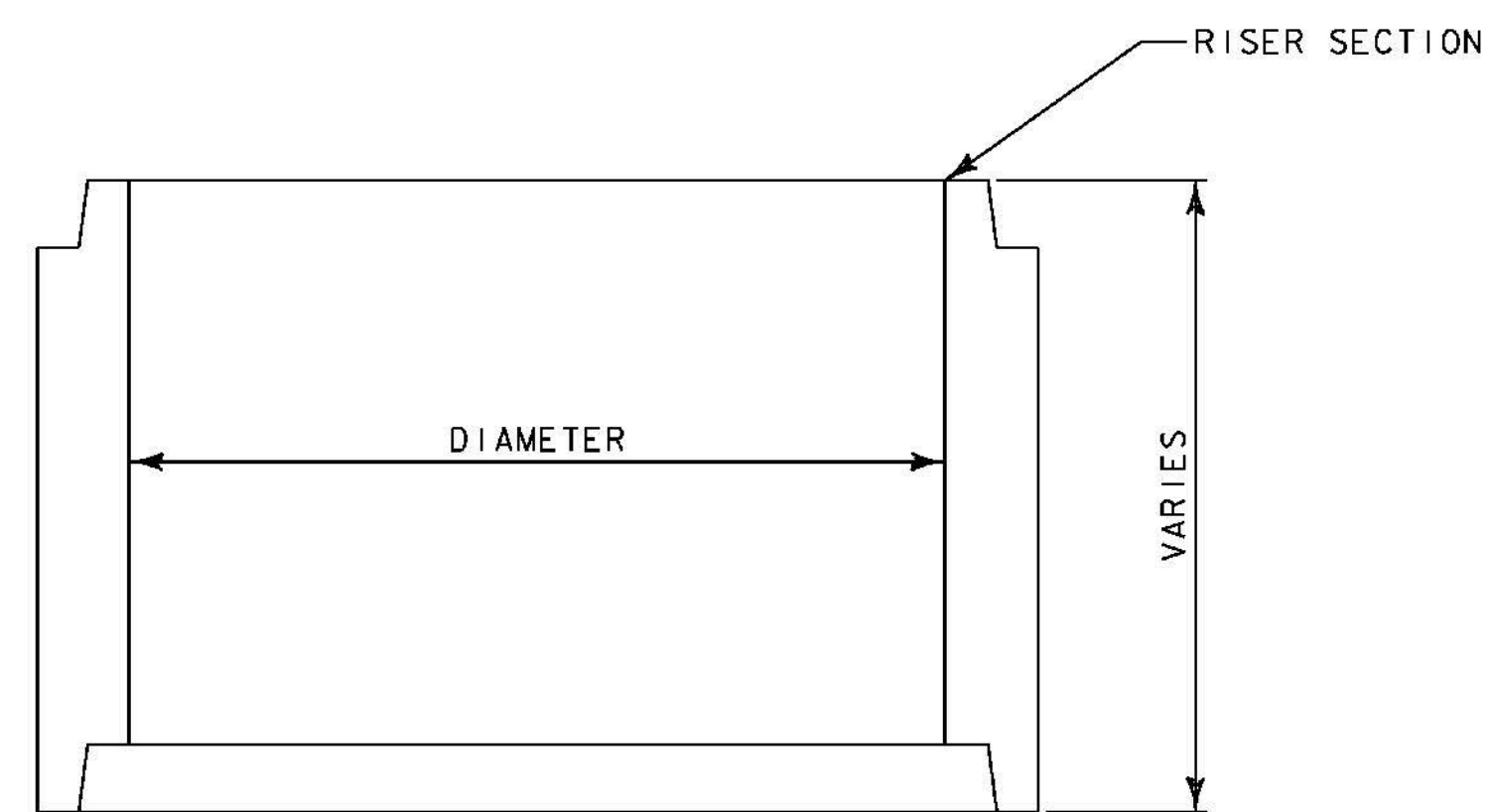
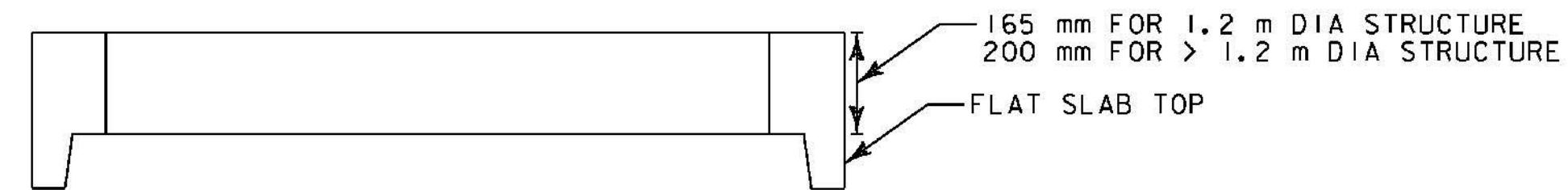
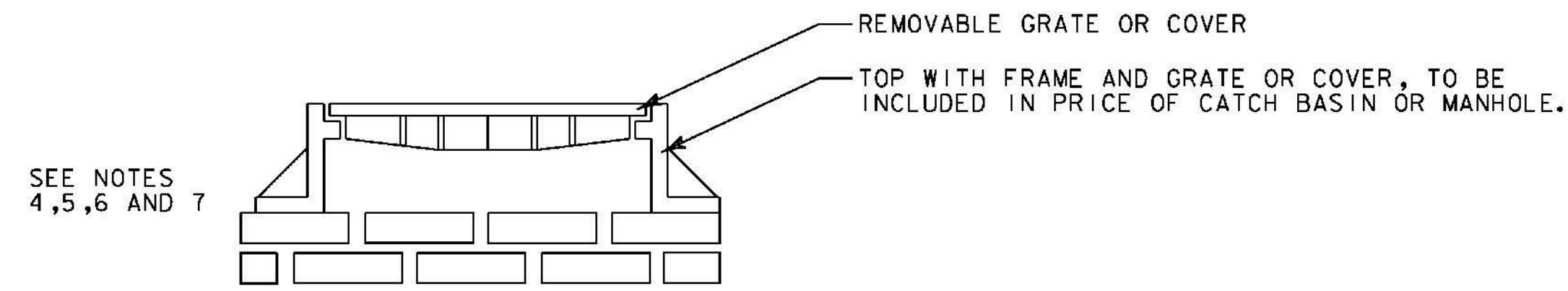
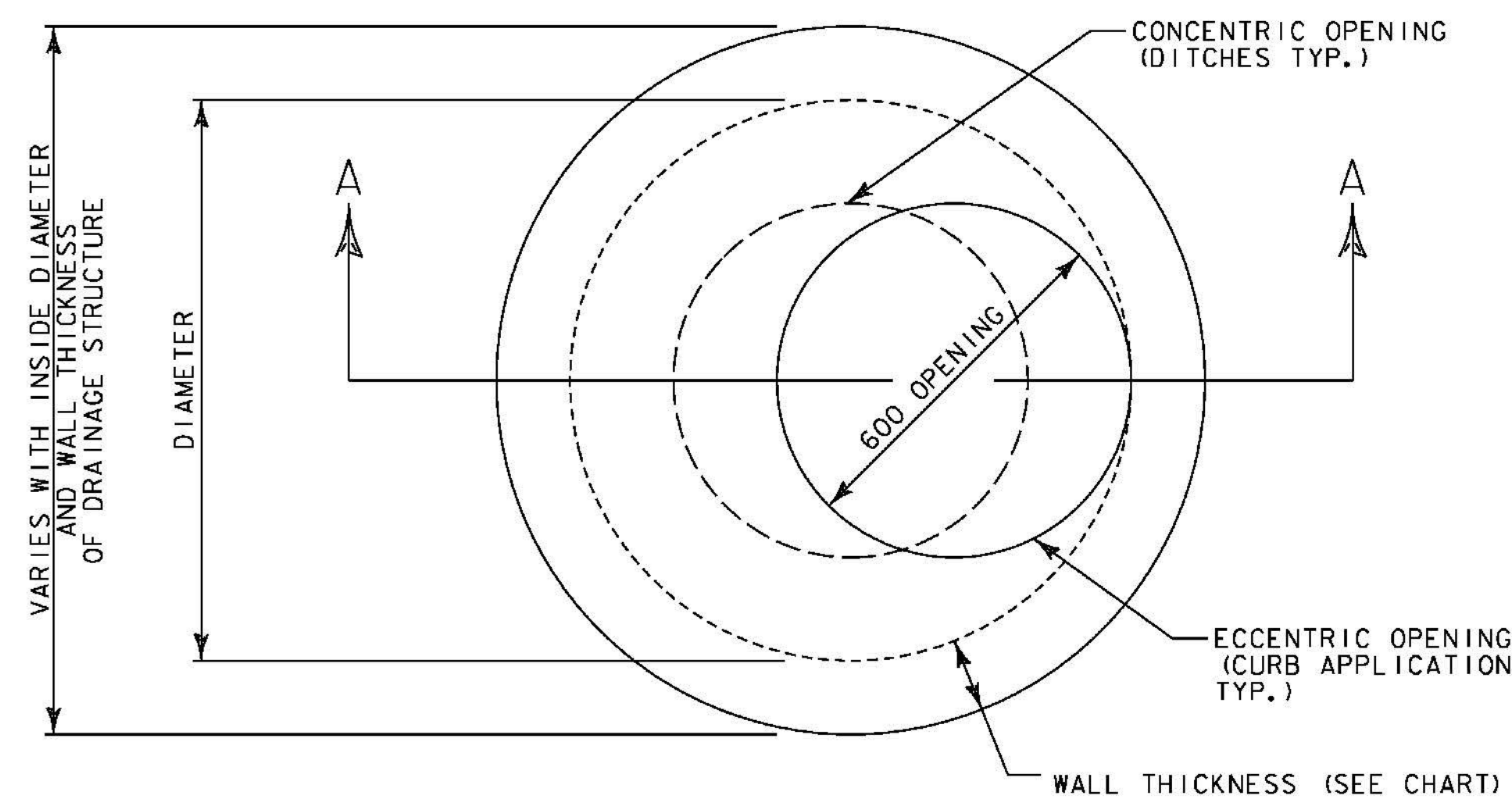


### NOTES

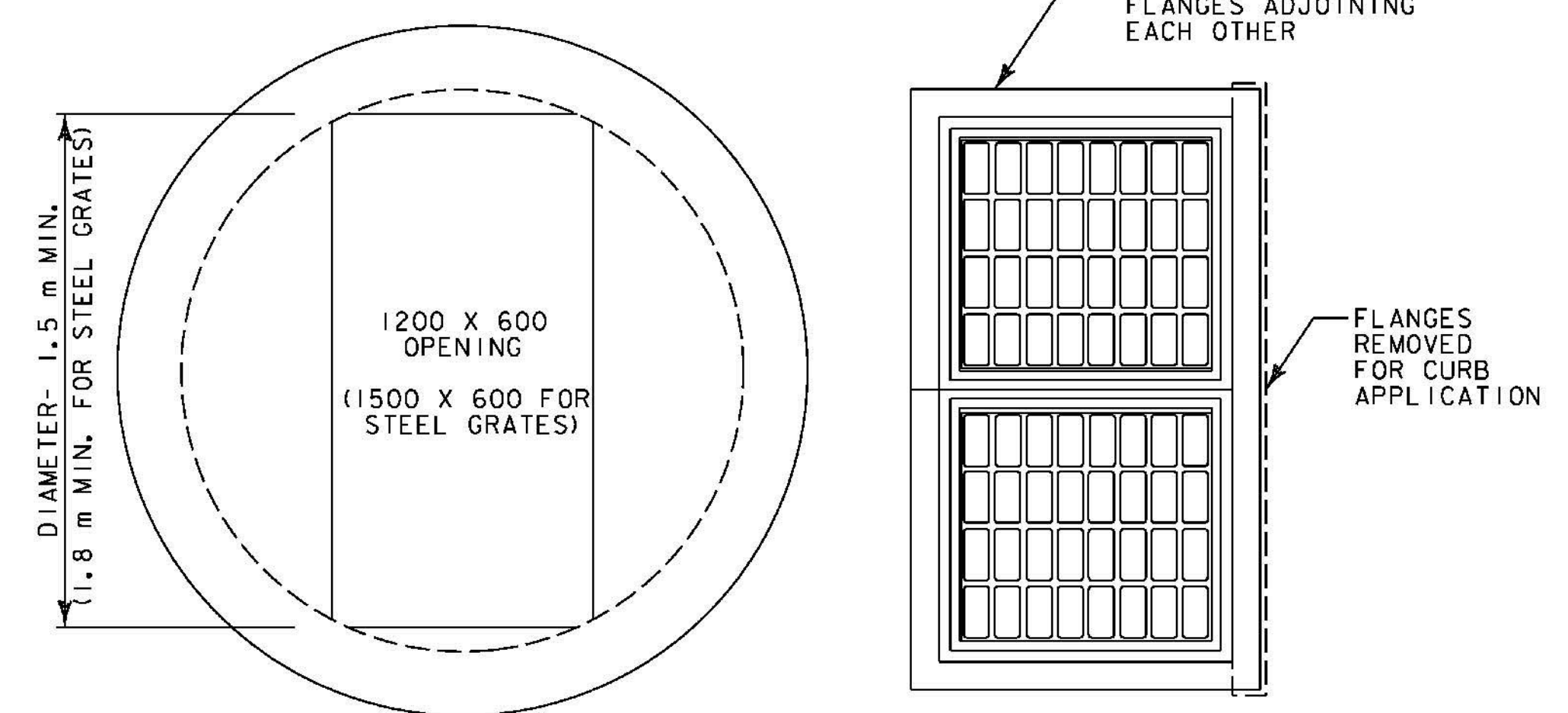
1. ALL CATCH BASINS AND MANHOLES SHALL BE CONSTRUCTED WITH PRECAST CONCRETE BASE SECTIONS, RISER SECTIONS AND FLAT SLAB TOPS CONFORMING TO SECTION 705.04 OF THE VERMONT STANDARD SPECIFICATIONS FOR CONSTRUCTION.
2. PRECAST SECTIONS SHALL HAVE A TONGUE AND GROOVE JOINT 100 mm HIGH AT AN 11° ANGLE CENTERED IN THE WIDTH OF THE WALL AND SHALL BE ASSEMBLED USING AN APPROVED FLEXIBLE SEALANT IN JOINTS.
3. ALL STRUCTURES WITH MULTIPLE PIPES SHALL HAVE A MINIMUM OF 300 mm OF INSIDE SURFACE BETWEEN HOLES, NO MORE THAN 75% OF A HORIZONTAL CROSS SECTION SHALL BE HOLES, AND THERE SHALL BE NO HOLES CLOSER THAN 75 mm TO JOINTS
4. GRATE AND FRAME SIZES VARY. REFER TO VAOT STANDARD SHEETS (D SERIES) FOR DIMENSIONS.
5. TOP WITH GRATE AND FRAME INSTALLATION (WITH OR WITHOUT CURB) NOT SHOWN. REFER TO VAOT STANDARD SHEETS (D SERIES) FOR DETAILS, CONCRETE QUANTITIES AND STEEL SCHEDULE.
6. TWO COURSES (MAX) OF BUILDING BRICK, CONFORMING TO SECTION 705.01 (b) OF THE VERMONT STANDARD SPECIFICATIONS FOR CONSTRUCTION, TO BE PLACED ON TOP OF CONCRETE STRUCTURE PRIOR TO PLACING FRAME TO FACILITATE CHANGING ELEVATION OF CATCH BASIN OR MANHOLE WHEN REQUIRED. BRICK TO BE INCLUDED IN PRICE OF CATCH BASIN OR MANHOLE.
7. REFER TO VTRANS STANDARD SHEET D-11 FOR APPLICATION OF CAST IRON COVER WITH FRAME FOR MANHOLE.



**SECTION A-A**  
(NOT TO SCALE)



**FLAT SLAB TOP**  
(NOT TO SCALE)



**FLAT SLAB TOP (DOUBLE GRATE)**  
(NOT TO SCALE)

DIAMETER	WALL THICKNESS (MIN.)	FLOOR THICKNESS (MIN.)
1.2 m	125 mm	150 mm
1.5 m	150 mm	175 mm
1.8 m	175 mm	200 mm
2.1 m	200 mm	225 mm
2.4 m	225 mm	250 mm

**PRECAST REINFORCED CONCRETE  
CATCH BASIN / MANHOLE DETAIL**

**DRAINAGE DETAIL I**

PROJECT NAME: BRANDON	
PROJECT NUMBER: NH 019-3(495)	
FILE NAME: zb008s5-frml4.dgn	PLOT DATE: 9/3/2009
PROJECT LEADER: CRB	DRAWN BY: NLL
DESIGNED BY: DAM	CHECKED BY: PTS
CLD 02-0149	SHEET 135 OF 546