

CONSTRUCT DRIVES
 STA 20+715.7 RT - 12.0 m WIDE, PAVED-COMM.
 STA 20+786.6 RT - 3.0 m WIDE, PAVED-RES.
 STA 20+797.0 LT - 11.5 m WIDE, GRAVEL COMM.

SPECIAL PROVISION (REMOVE AND RESET COMMERCIAL SIGN)
 STA 20+683.7 RT

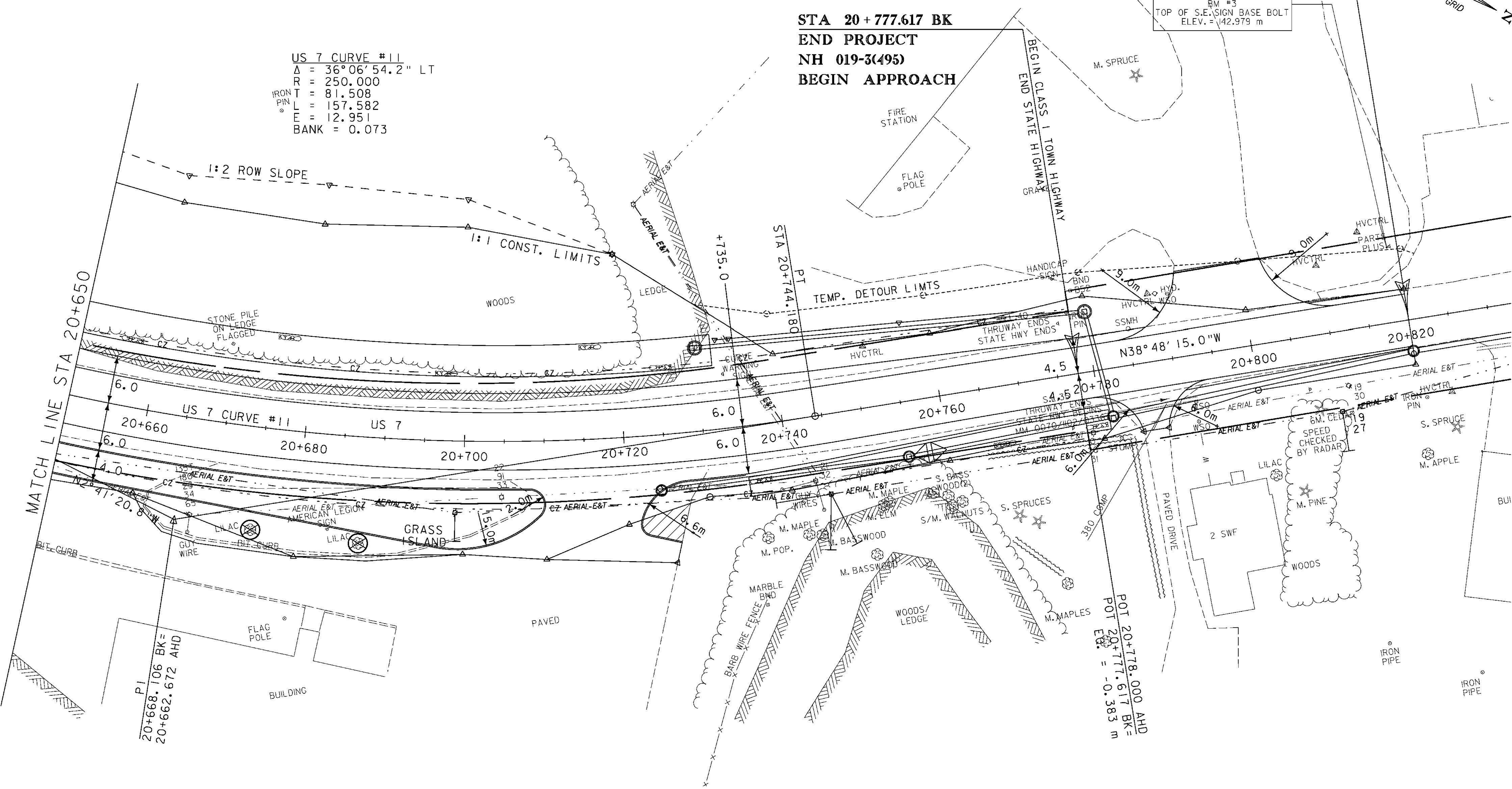
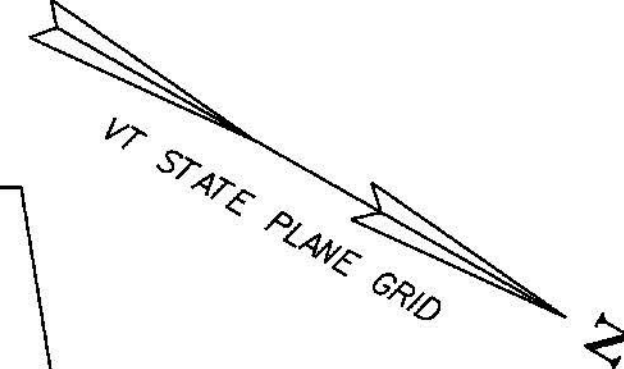
VERTICAL GRANITE CURB
 STA 20+650.0 - 20+710.0 RT (ISLAND)
 STA 20+721.4 - 20+734.6 RT

US 7 CURVE #11
 $\Delta = 36^{\circ}06'54.2''$ LT
 R = 250.000
 T = 81.508
 L = 157.582
 E = 12.951
 BANK = 0.073

STA 20+777.617 BK
END PROJECT
NH 019-3(495)
BEGIN APPROACH

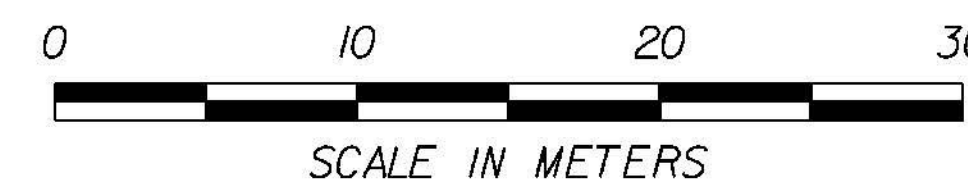
STA 20+820.000 AHD
END APPROACH

BM #3
 TOP OF S.E. SIGN BASE BOLT
 ELEV. = 42.979 m



NOTE
 1. APPROXIMATE LIMITS OF DRILLING AND BLASTING OF SOLID ROCK SUBGRAGE FROM STA 19+780 TO STA 20+760.

⊗ DENOTES TREE OR STUMP REMOVAL



ROADWAY LAYOUT 28

PROJECT NAME:	BRANDON	PLOT DATE:	9/3/2009
PROJECT NUMBER:	NH 019-3(495)	DRAWN BY:	NLL
FILE NAME:	zb008s5-gen28.dgn	CHECKED BY:	PTS
PROJECT LEADER:	CRB	SHEET	122 OF 546
DESIGNED BY:	DAM		