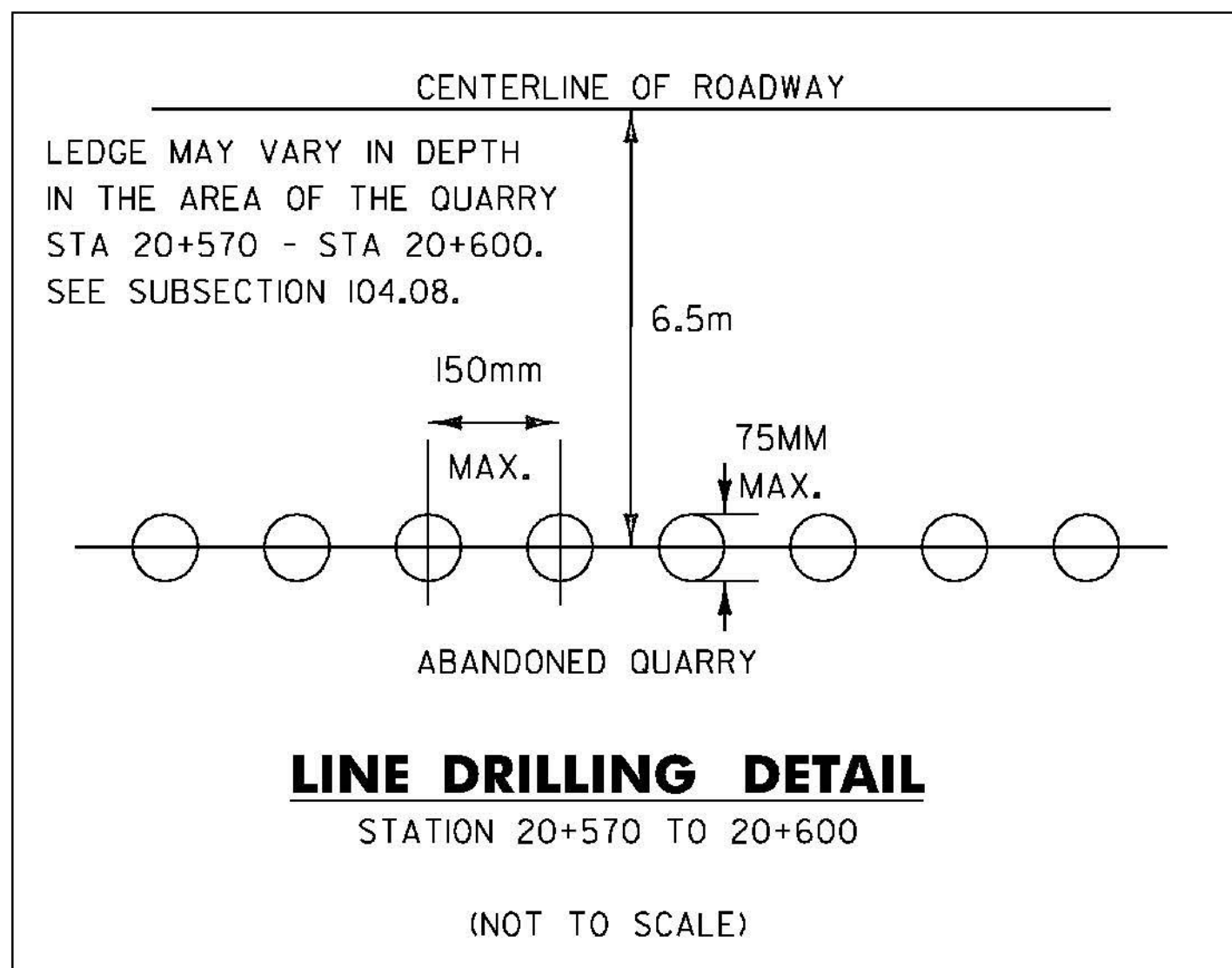
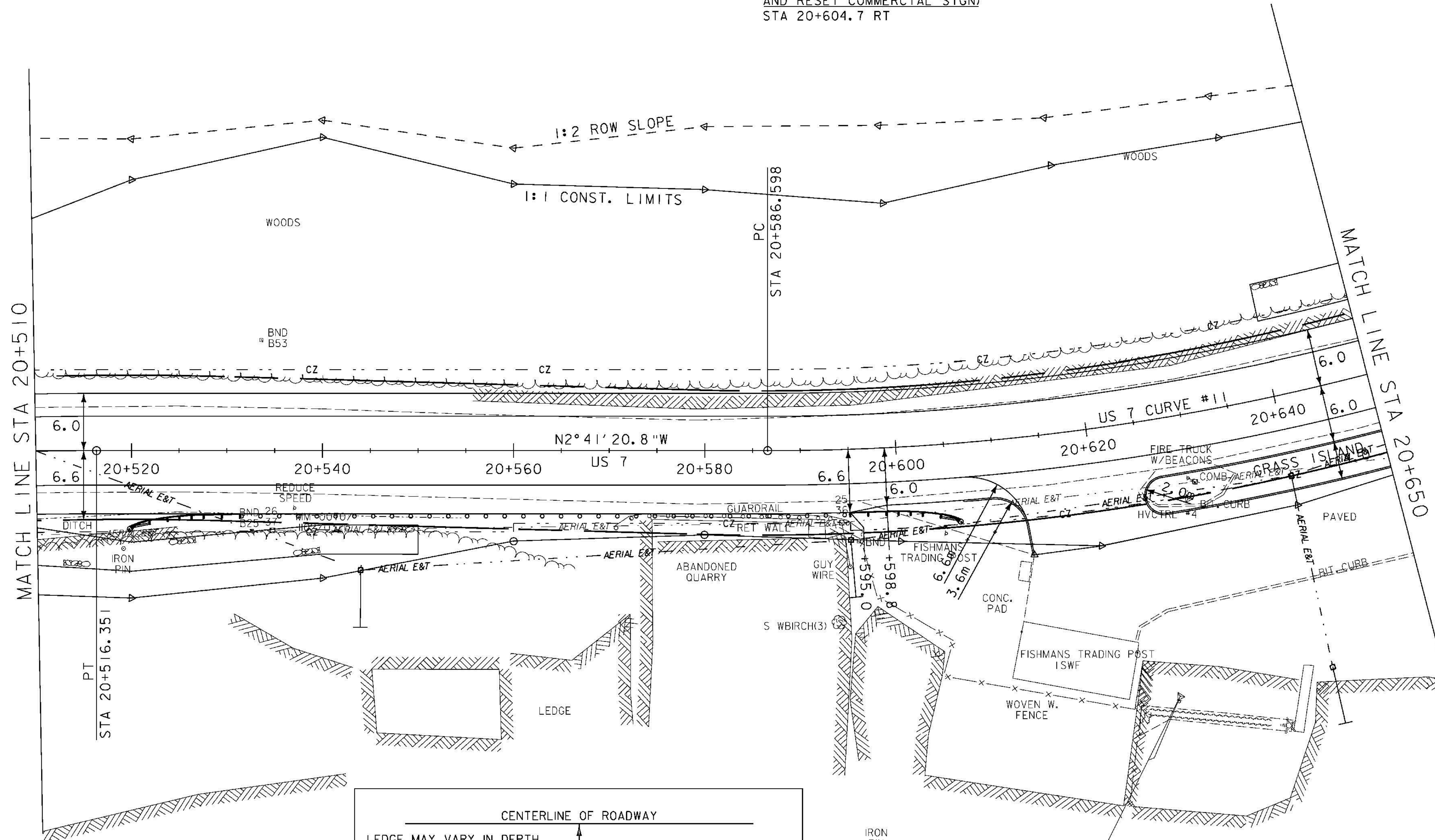


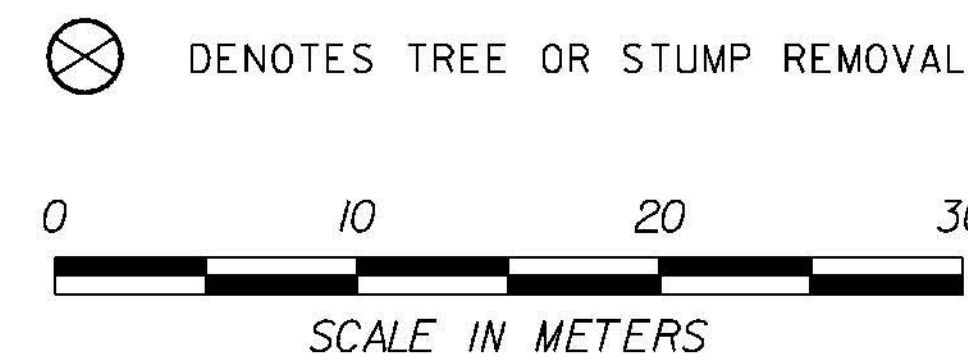
**CONSTRUCT DRIVES**  
 STA 20+620.0 RT - 12.0 m WIDE, PAVED-COMM.  
**VERTICAL GRANITE CURB**  
 STA 20+606.6 - 20+613.2 RT  
 STA 20+625.0 - 20+650.0 RT (ISLAND)  
**SPECIAL PROVISION (LINE DRILLING)**  
 STA 20+570 - 20+600 RT

**REMOVING AND RESETTING FENCE**  
 STA 20+593.4 - 20+596.0 RT

**MANUFACTURED TERMINAL SECTION, TANGENT**  
 STA 20+531.4 RT  
 STA 20+595.0 RT  
**STEEL BEAM GUARDRAIL, GALVANIZED**  
 STA 20+531.4 - 20+595.0 RT  
**REMOVAL AND DISPOSAL OF GUARDRAIL**  
 STA 20+570.4 - 20+596.3 RT  
**SPECIAL PROVISION (REMOVE AND RESET COMMERCIAL SIGN)**  
 STA 20+604.7 RT



**NOTE**  
 1. APPROXIMATE LIMITS OF DRILLING AND BLASTING OF SOLID ROCK SUBGRADE FROM STA 19+780 TO STA 20+760.



<b>ROADWAY LAYOUT 27</b>	
PROJECT NAME:	BRANDON
PROJECT NUMBER:	NH 019-3(495)
FILE NAME:	zb008s5-gen27.dgn
PLOT DATE:	9/3/2009
PROJECT LEADER:	CRB
DRAWN BY:	NLL
DESIGNED BY:	DAM
CHECKED BY:	PTS
CLD 02-0149	SHEET 120 OF 546