

**CONSTRUCT DRIVES**  
 STA 20+173.0 RT - 3.6 m WIDE, GRAVEL-RES.  
 STA 2+032.0 RT - 3.9 m WIDE, GRAVEL-RES.  
 STA 2+042.0 RT - 3.6 m WIDE, GRAVEL-RES.

**STEEL BEAM GUARDRAIL, GALVANIZED**  
 STA 20+030.0 - 20+068.2 LT

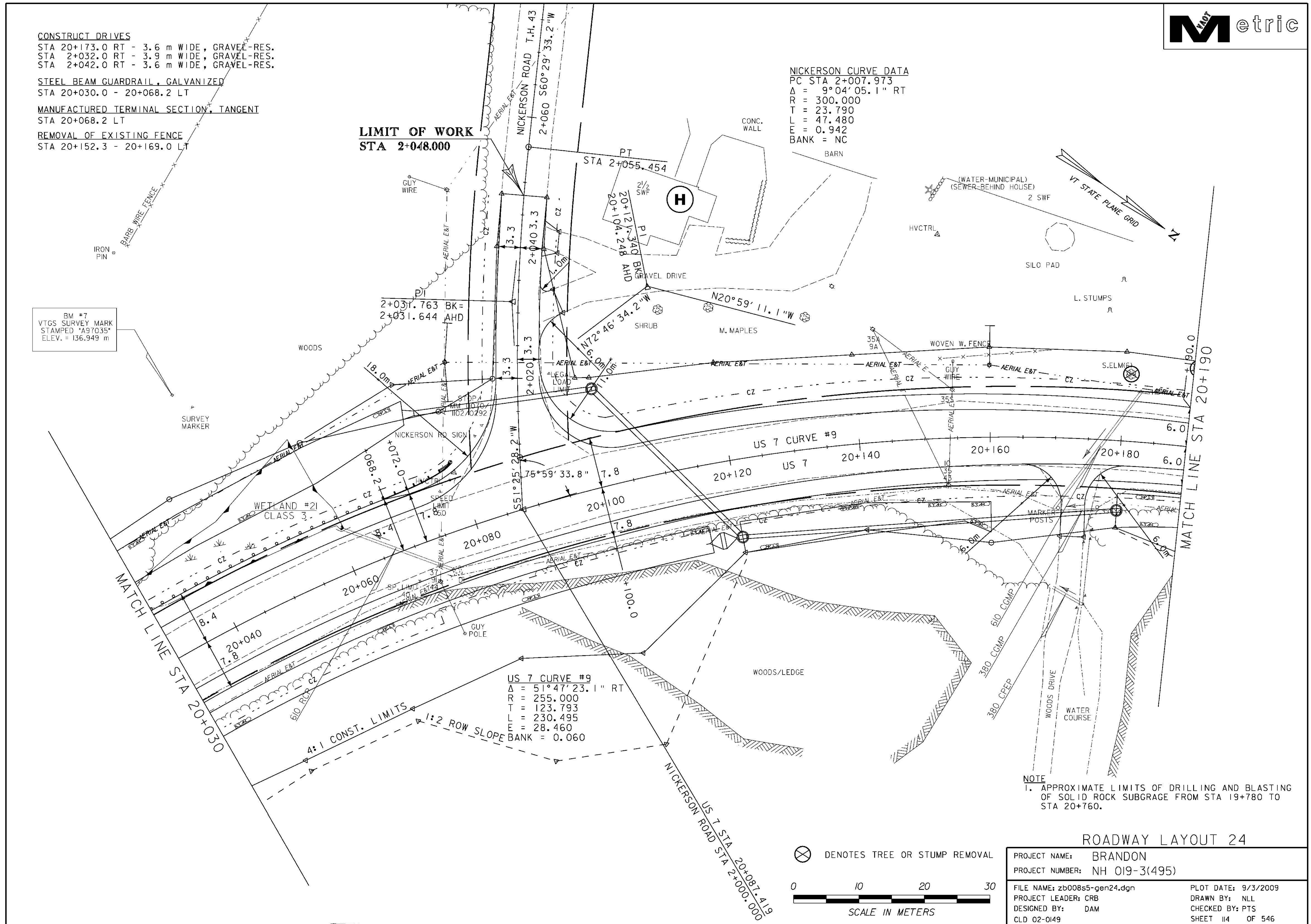
**MANUFACTURED TERMINAL SECTION, TANGENT**  
 STA 20+068.2 LT

**REMOVAL OF EXISTING FENCE**  
 STA 20+152.3 - 20+169.0 LT

**NICKERSON CURVE DATA**  
 PC STA 2+007.973  
 $\Delta = 9^{\circ}04'05.1''$  RT  
 R = 300.000  
 T = 23.790  
 L = 47.480  
 E = 0.942  
 BANK = NC

**LIMIT OF WORK**  
 STA 2+048.000

BM #7  
 VTGS SURVEY MARK  
 STAMPED "A97035"  
 ELEV. = 136.949 m



**NOTE**  
 1. APPROXIMATE LIMITS OF DRILLING AND BLASTING OF SOLID ROCK SUBGRAGE FROM STA 19+780 TO STA 20+760.

**ROADWAY LAYOUT 24**

⊗ DENOTES TREE OR STUMP REMOVAL



PROJECT NAME:	BRANDON	PLOT DATE:	9/3/2009
PROJECT NUMBER:	NH 019-3(495)	DRAWN BY:	NLL
FILE NAME:	zb008s5-gen24.dgn	CHECKED BY:	PTS
PROJECT LEADER:	CRB	CLD 02-0149	SHEET 114 OF 546
DESIGNED BY:	DAM		