

CONSTRUCT DRIVES
 STA 19+271.5 RT - 12.0 m WIDE, PAVED-COMM.
 STA 19+386.0 RT - 7.2 m WIDE, PAVED-COMM.

COLD PLANING, BITUMINOUS CONCRETE PAVEMENT
 (TYPE 111S) (1-45 mm LIFT)
 STA 19+230.0 - 19+234.0

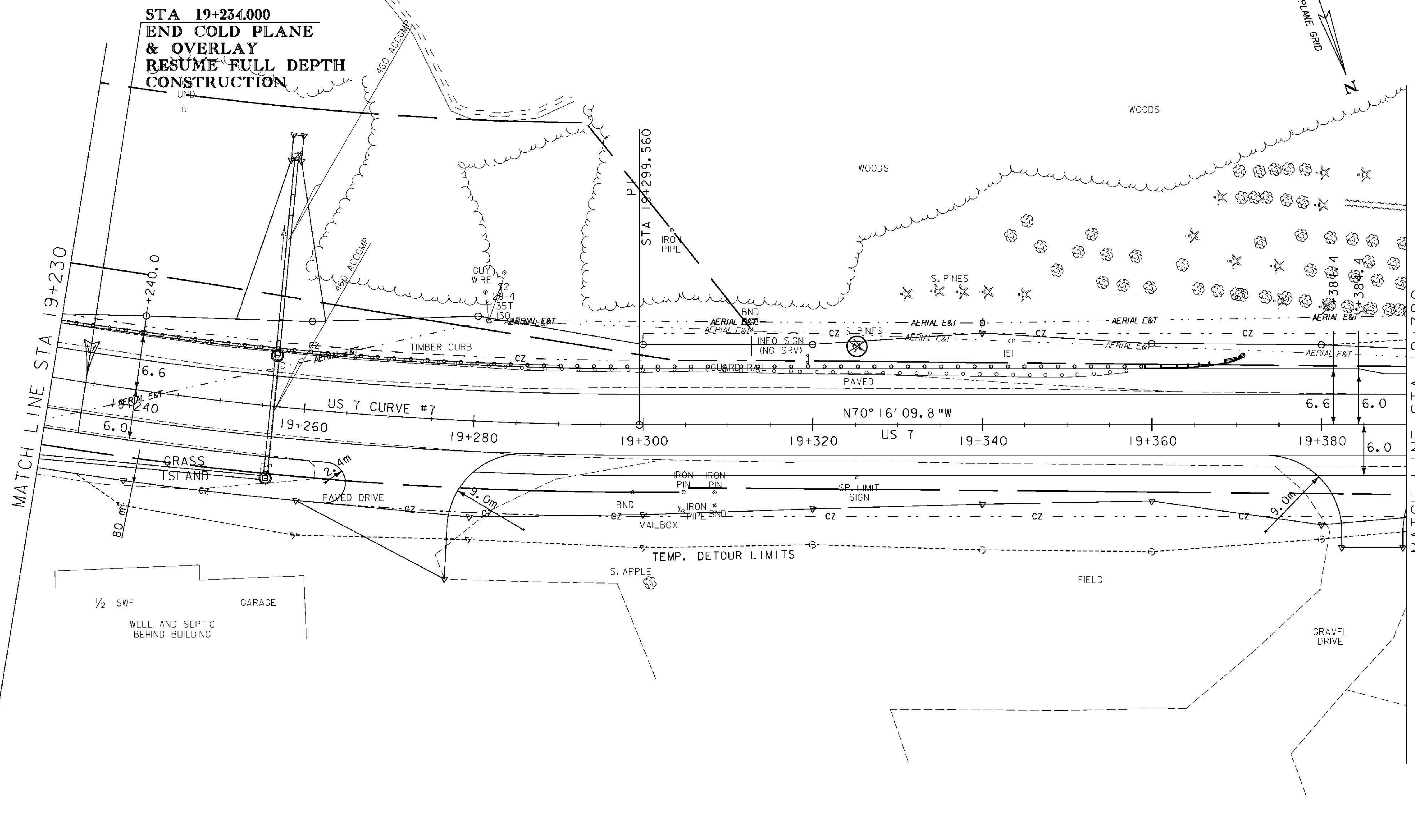
RELOCATE MAILBOX, SINGLE SUPPORT
 STA 19+304.2 RT

REMOVAL AND DISPOSAL OF GUARDRAIL
 STA 19+230.0 - 19+357.2 LT

STEEL BEAM GUARDRAIL, GALVANIZED
 STA 19+230.0 - 19+359.2 LT
 (CONNECT TO EXISTING AT STA 19+230.0)

MANUFACTURED TERMINAL SECTION, TANGENT
 STA 19+359.2 LT

BITUMINOUS CONCRETE CURB, TYPE A
 STA 19+230.0 - 19+290.0 LT



STA 19+234.000
END COLD PLANE & OVERLAY
RESUME FULL DEPTH CONSTRUCTION

MATCH LINE STA 19+230

MATCH LINE STA 19+390

⊗ DENOTES TREE OR STUMP REMOVAL



ROADWAY LAYOUT 19

| | | | |
|-----------------|-------------------|-------------|------------------|
| PROJECT NAME: | BRANDON | PLOT DATE: | 9/3/2009 |
| PROJECT NUMBER: | NH 019-3(495) | DRAWN BY: | NLL |
| FILE NAME: | zb008s5-genl9.dgn | CHECKED BY: | PTS |
| PROJECT LEADER: | CRB | CLD 02-0149 | SHEET 104 OF 546 |