

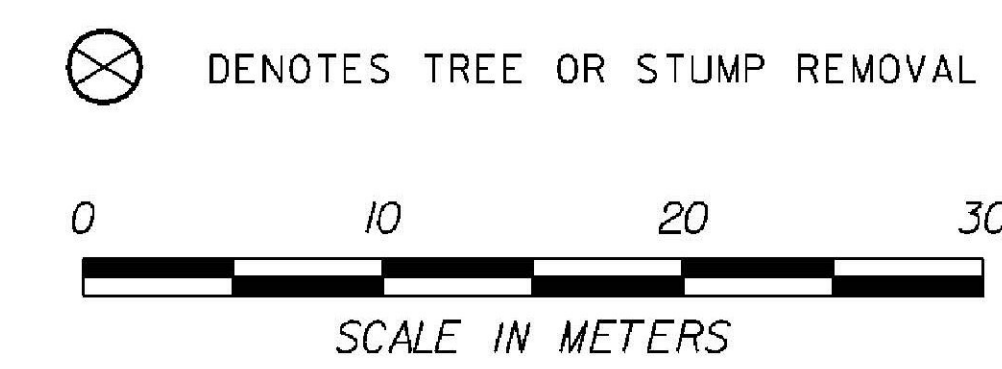
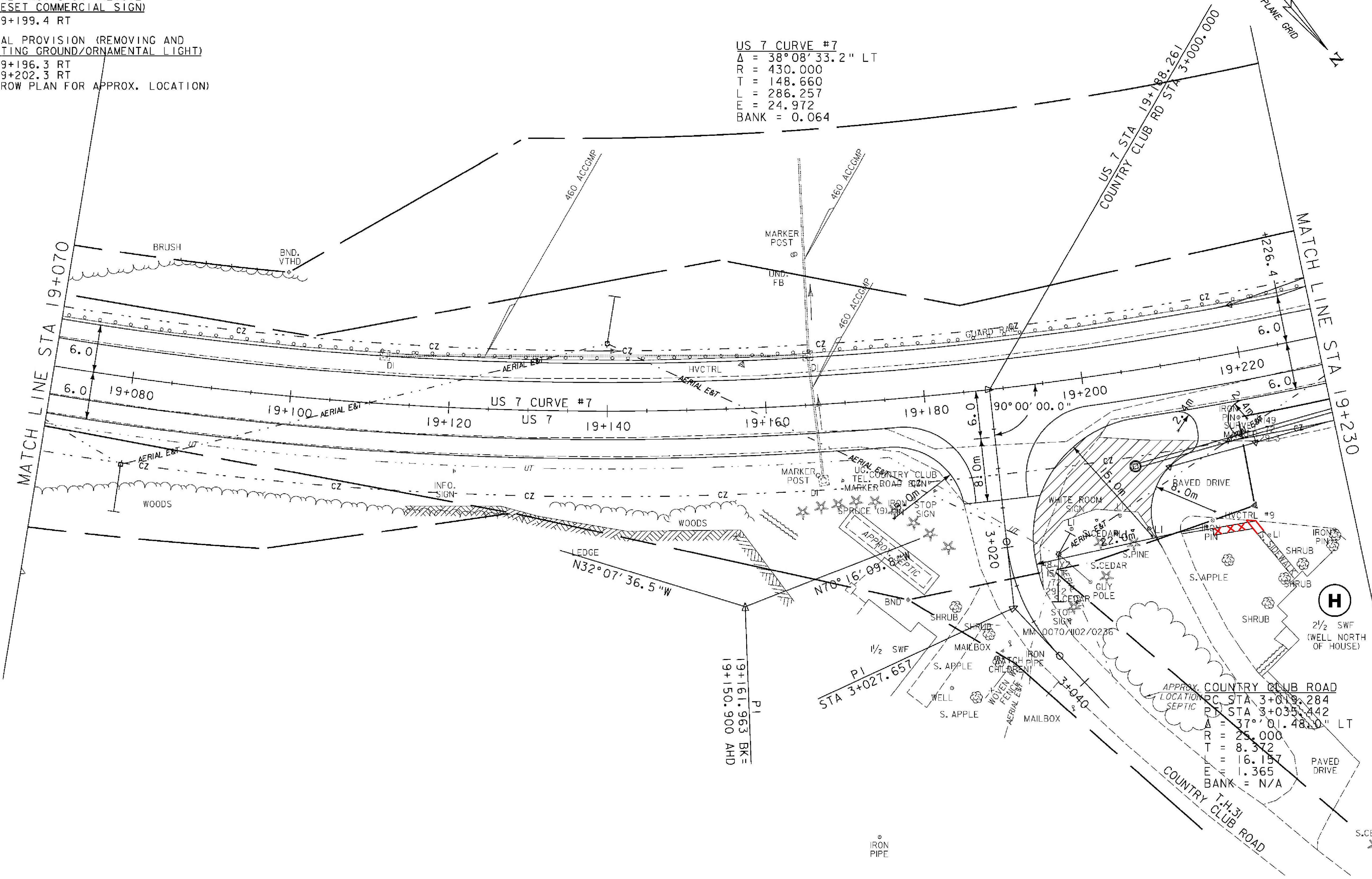
CONSTRUCT DRIVES
 STA 19+215.2 RT - 4.0 m WIDE, PAVED-COMM.
 COLD PLANING, BITUMINOUS CONCRETE PAVEMENT
 (TYPE 111S) (1-45 mm LIFT)
 STA 19+070.0 - 19+230.0

EXCAVATION OF SURFACES AND
 PAVEMENTS (PLACE 100mm
 TOPSOIL, SEED, FERTILIZER,
 LIMESTONE AND HAY MULCH)
 STA 3+026.7 LT - 19+213.1 RT

PORTLAND CEMENT CONCRETE SIDEWALK, 125 mm
 STA 19+213.1 - 19+219.0 RT

SPECIAL PROVISION (REMOVE
 AND RESET COMMERCIAL SIGN)
 STA 19+199.4 RT
 SPECIAL PROVISION (REMOVING AND
 RESETTING GROUND/ORNAMENTAL LIGHT)
 STA 19+196.3 RT
 STA 19+202.3 RT
 (SEE ROW PLAN FOR APPROX. LOCATION)

US 7 CURVE #7
 $\Delta = 38^{\circ}08'33.2''$ LT
 $R = 430.000$
 $T = 148.660$
 $L = 286.257$
 $E = 24.972$
 $BANK = 0.064$



ROADWAY LAYOUT 18	
PROJECT NAME:	BRANDON
PROJECT NUMBER:	NH 019-3(495)
FILE NAME:	zb008s5-genl8.dgn
PROJECT LEADER:	CRB
DESIGNED BY:	DAM
CLD 02-0149	
PLOT DATE:	9/3/2009
DRAWN BY:	NLL
CHECKED BY:	PTS
SHEET	102 OF 546