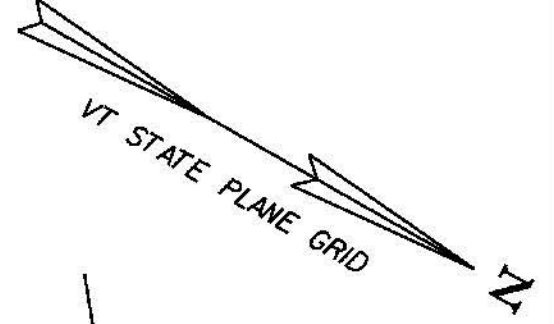


**CONSTRUCT DRIVES**  
 STA 20+715.7 RT - 12.0 m WIDE, PAVED-COMM.  
 STA 20+786.6 RT - 3.0 m WIDE, PAVED-RES.  
 STA 20+797.0 LT - 11.5 m WIDE, GRAVEL COMM.

**VERTICAL GRANITE CURB**  
 STA 20+650.0 - 20+710.0 RT (ISLAND)  
 STA 20+721.4 - 20+734.6 RT

**SPECIAL PROVISION (REMOVE AND RESET COMMERCIAL SIGN)**  
 STA 20+683.7 RT

REMOVE & REPLACE PROPERTY MARKERS	
EXISTING	PROPOSED
BND C6 20+778.651 10.409 m (34.15') LT	NONE
IP C6 20+777.722 7.769 m (25.49') LT	NONE



**STA 20+777.617 BK**  
**END PROJECT**  
**NH 019-3(495)**  
**BEGIN APPROACH**

**STA 20+820.000 AHD**  
**END APPROACH**

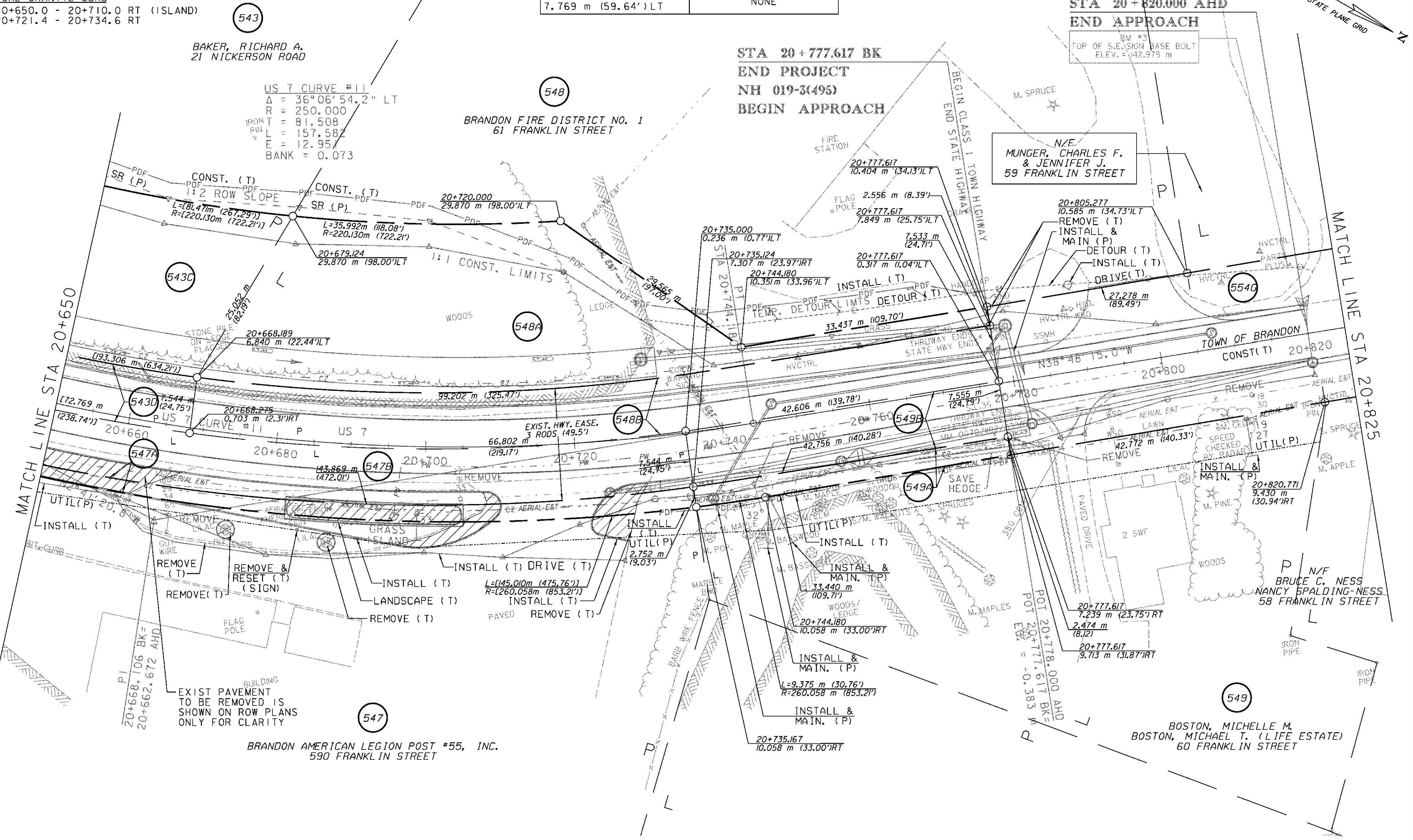
BM #3  
 TOP OF S.E. SIGN BASE BOLT  
 ELEV. = 142.979 m

N/E  
**MUNGER, CHARLES F. & JENNIFER J.**  
**59 FRANKLIN STREET**

**TOWN OF BRANDON**  
**CONST. (T) 20+820**

MATCH LINE STA 20+825

MATCH LINE STA 20+650



LINES SHOWN ON THIS PLAN AS EXISTING PROPERTY LINES (P/L) ARE BELIEVED TO BE ACCURATE BUT SHOULD NOT BE RELIED UPON FOR PURPOSES UNRELATED TO THE STATE OF VERMONT ACQUISITION OF LAND AND RIGHTS FOR THIS PROJECT

⊗ DENOTES TREE OR STUMP REMOVAL



**RIGHT-OF-WAY LAYOUT 28**

PROJECT NAME: BRANDON	PLOT DATE: 9/3/2009
PROJECT NUMBER: NH 019-3(495)	DRAWN BY: JCS
FILE NAME: zb008s5-ROW28.dgn	CHECKED BY: PTS
PROJECT LEADER: CRB	ROW SHEET 48 OF 164
DESIGNED BY: PTS	SHEET 63 OF 546