

CONSTRUCT DRIVES
 STA 19+450.5 LT - 6.5 m WIDE, GRAVEL-RES.
 STA 19+501.7 RT - 3.6 m WIDE, PAVED-RES.
 STA 19+520.0 LT - 7.2 m WIDE, PAVED-COMM.
 STA 19+540.0 RT - 7.0 m WIDE, PAVED-RES.

SPECIAL PROVISION
 (REMOVE COMMERCIAL SIGN)
 STA 19+502.0 LT

RELOCATE MAILBOX, MULTIPLE SUPPORT
 STA 19+440.0 LT

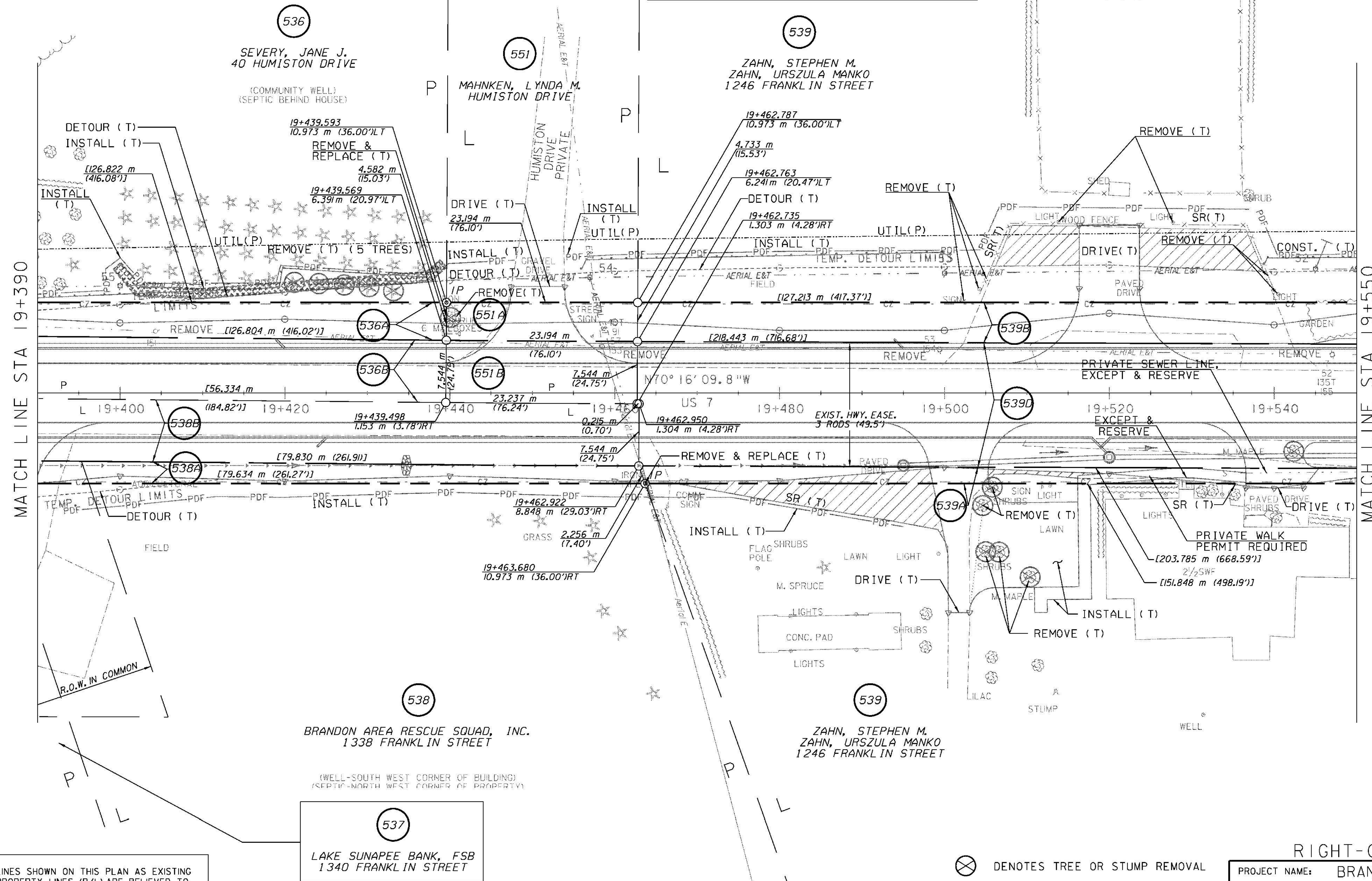
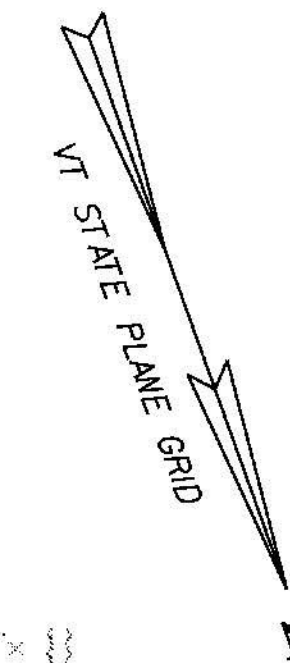
SPECIAL PROVISION (REMOVING AND RESETTING GROUND/ORNAMENTAL LIGHT ASSEMBLY)
 STA 19+504.2 LT TO 19+501.0 15.0m LT
 STA 19+513.8 LT TO 19+511.5 24.1m LT
 STA 19+527.1 LT TO 19+525.0 24.1m LT
 STA 19+540.5 LT TO 19+537.0 15.0m LT

REMOVAL OF EXISTING FENCE
 STA 19+504.3 - 19+524.5 LT
 STA 19+527.6 - 19+540.2 LT

BITUMINOUS CONCRETE SIDEWALK
 STA 19+510.9 - 19+536.6 RT
 MATCH TO EXISTING RAMP
 AT STA 19+510.9 AND STEPS
 AT STA 19+528.5

REMOVE & REPLACE PROPERTY MARKERS	
EXISTING	PROPOSED
IP 19+439.584 9.329 m (30.61')LT	IP 19+439.593 10.973 m (36.00')LT
IP 19+463.552 10.612 m (34.82')RT	IP 19+463.680 10.973 m (36.00')RT

EXCAVATION OF SURFACES AND PAVEMENTS (PLACE 100mm TOPSOIL, SEED, FERTILIZER, LIMESTONE AND HAY MULCH)
 STA 19+466.6 - 19+500.4 RT
 STA 19+505.3 - 19+519.4 RT
 STA 19+506.2 - 19+516.3 LT
 STA 19+523.7 - 19+538.7 LT



MATCH LINE STA 19+390

MATCH LINE STA 19+550

LINES SHOWN ON THIS PLAN AS EXISTING PROPERTY LINES (P/L) ARE BELIEVED TO BE ACCURATE BUT SHOULD NOT BE RELIED UPON FOR PURPOSES UNRELATED TO THE STATE OF VERMONT ACQUISITION OF LAND AND RIGHTS FOR THIS PROJECT

⊗ DENOTES TREE OR STUMP REMOVAL



RIGHT-OF-WAY LAYOUT 20

PROJECT NAME:	BRANDON	PLOT DATE:	9/3/2009
PROJECT NUMBER:	NH 019-3(495)	DRAWN BY:	JCS
FILE NAME:	z0008s5-ROW20.dgn	CHECKED BY:	PTS
PROJECT LEADER:	CRB	ROW SHEET	40 OF 164
DESIGNED BY:	PTS	SHEET	55 OF 546