

CONSTRUCT DRIVES
 STA 19+271.5 RT - 12.0 m WIDE, PAVED-COMM.
 STA 19+386.0 RT - 7.2 m WIDE, PAVED-COMM.

COLD PLANING, BITUMINOUS CONCRETE PAVEMENT
 (TYPE 111S) (1-45 mm LIFT)
 STA 19+230.0 - 19+234.0

RELOCATE MAILBOX, SINGLE SUPPORT
 STA 19+304.2 RT

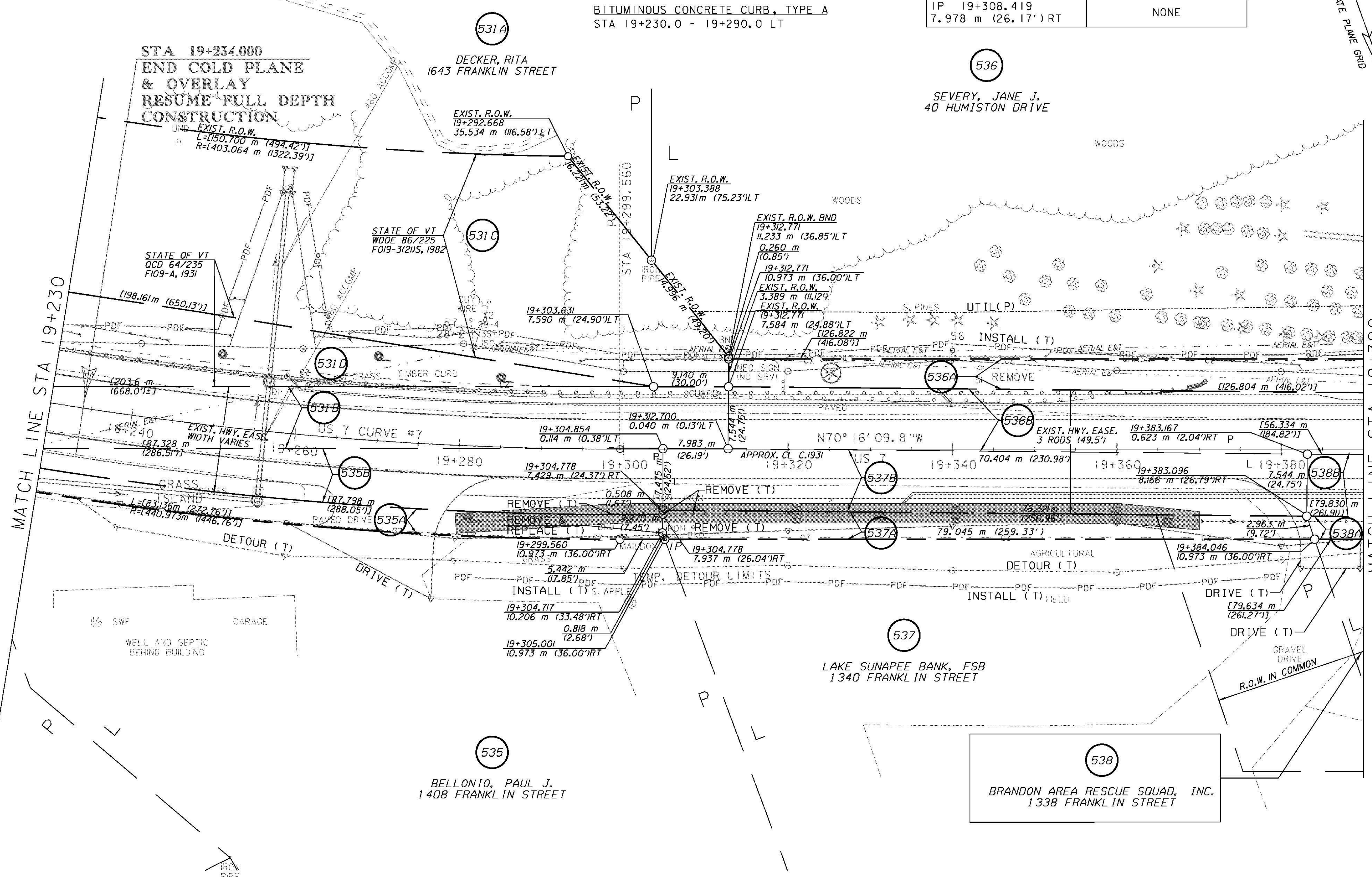
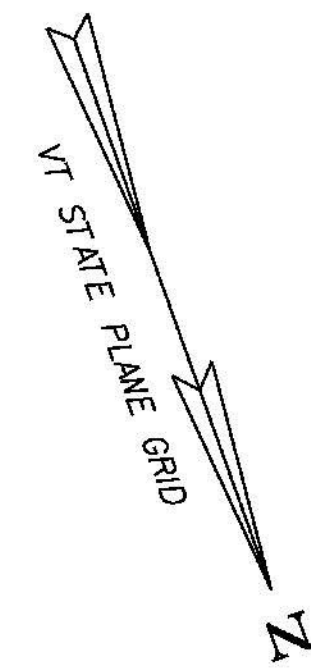
REMOVAL AND DISPOSAL OF GUARDRAIL
 STA 19+230.0 - 19+357.2 LT

STEEL BEAM GUARDRAIL, GALVANIZED
 STA 19+230.0 - 19+359.2 LT
 (CONNECT TO EXISTING AT STA 19+230.0)

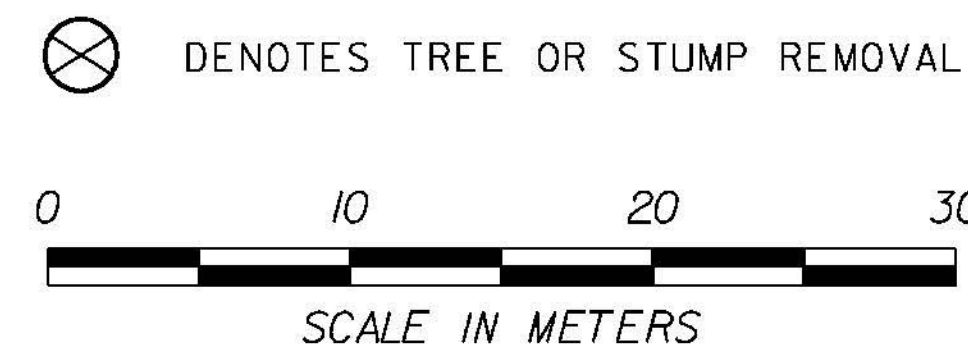
MANUFACTURED TERMINAL SECTION, TANGENT
 STA 19+359.2 LT

BITUMINOUS CONCRETE CURB, TYPE A
 STA 19+230.0 - 19+290.0 LT

REMOVE & REPLACE PROPERTY MARKERS	
EXISTING	PROPOSED
BND 19+298.736 7.970 m (26.15') RT	NONE
IP 19+304.717 10.206 m (33.48') RT	IP 19+305.001 10.973 m (36.00') RT
IP 19+304.778 7.937 m (26.17') RT	NONE
BND 19+308.418 9.520 m (31.23') RT	NONE
IP 19+308.419 7.978 m (26.17') RT	NONE



LINES SHOWN ON THIS PLAN AS EXISTING PROPERTY LINES (P/L) ARE BELIEVED TO BE ACCURATE BUT SHOULD NOT BE RELIED UPON FOR PURPOSES UNRELATED TO THE STATE OF VERMONT ACQUISITION OF LAND AND RIGHTS FOR THIS PROJECT



RIGHT-OF-WAY LAYOUT 19

PROJECT NAME:	BRANDON
PROJECT NUMBER:	NH 019-3(495)
FILE NAME:	zb008s5-ROW19.dgn
PROJECT LEADER:	CRB
DESIGNED BY:	PTS
ROW SHEET 39 OF 164	
PLOT DATE:	9/3/2009
DRAWN BY:	JCS
CHECKED BY:	PTS
	SHEET 54 OF 546