

**CONSTRUCT DRIVES**

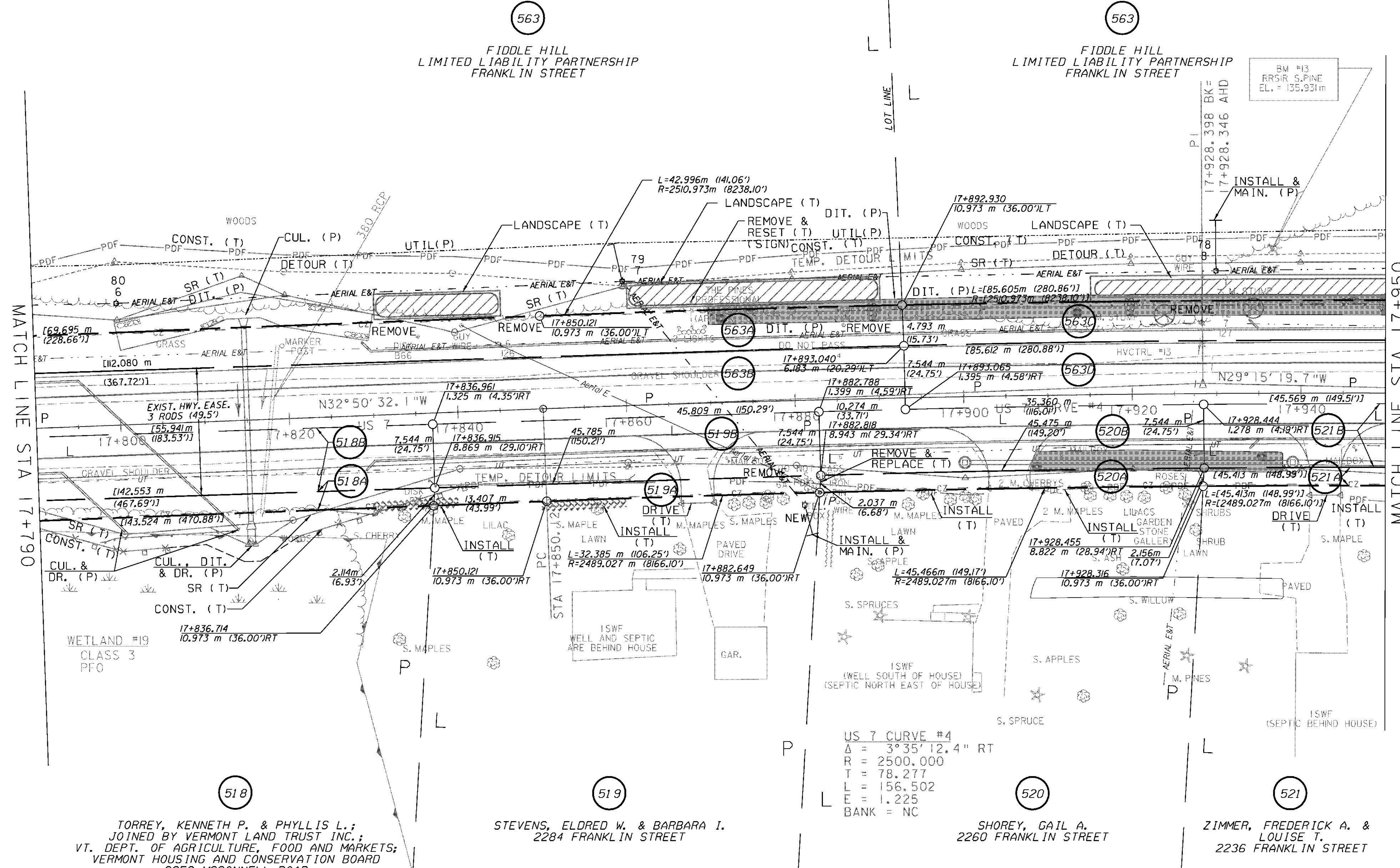
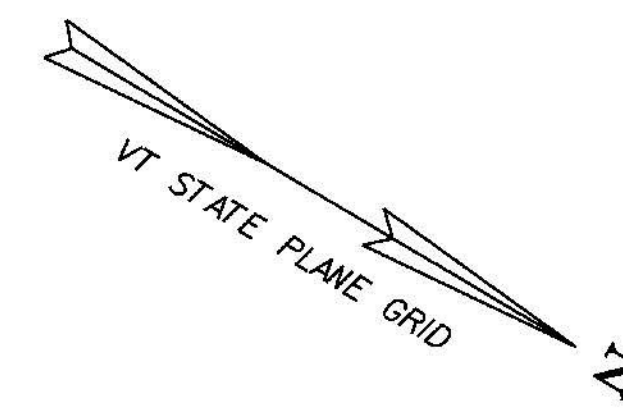
STA 17+868.0 RT - 3.9 m WIDE, PAVED-RES.  
 STA 17+905.0 RT - 4.9 m WIDE, PAVED-RES.  
 STA 17+943.0 RT - 3.6 m WIDE, PAVED-RES.  
 SPECIAL PROVISION (REMOVING AND RESETTING  
 GROUND / ORNAMENTAL LIGHT)  
 STA 17+866.5 LT  
 STA 17+869.5 LT

**RELOCATE MAILBOX, SINGLE SUPPORT**

STA 17+873.0 RT  
 STA 17+911.3 RT  
 STA 17+946.1 RT  
 SPECIAL PROVISION (REMOVE  
 AND RESET COMMERCIAL SIGN)  
 STA 17+868.0 LT

**REMOVE & REPLACE PROPERTY MARKERS**

EXISTING	PROPOSED
IP 17+882.750 9.753 m (32.00') RT	IP 17+882.649 10.973 m (36.00') RT
IP 17+885.971 8.776 m (28.79') LT	NONE



LINES SHOWN ON THIS PLAN AS EXISTING  
 PROPERTY LINES (P/L) ARE BELIEVED TO  
 BE ACCURATE BUT SHOULD NOT BE RELIED  
 UPON FOR PURPOSES UNRELATED TO THE  
 STATE OF VERMONT ACQUISITION OF LAND  
 AND RIGHTS FOR THIS PROJECT

⊗ DENOTES TREE OR STUMP REMOVAL



**RIGHT-OF-WAY LAYOUT 10**

PROJECT NAME:	BRANDON
PROJECT NUMBER:	NH 019-3(495)
FILE NAME:	zb0085-ROW10.dgn
PLOT DATE:	9/3/2009
PROJECT LEADER:	CRB
DRAWN BY:	JCS
DESIGNED BY:	PTS
CHECKED BY:	PTS
ROW SHEET 30 OF 164	SHEET 45 OF 546