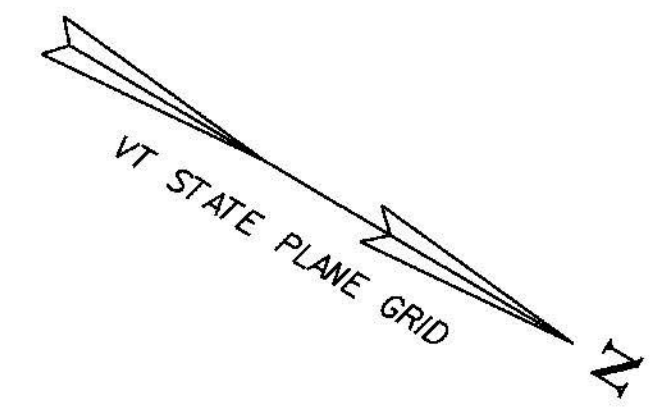
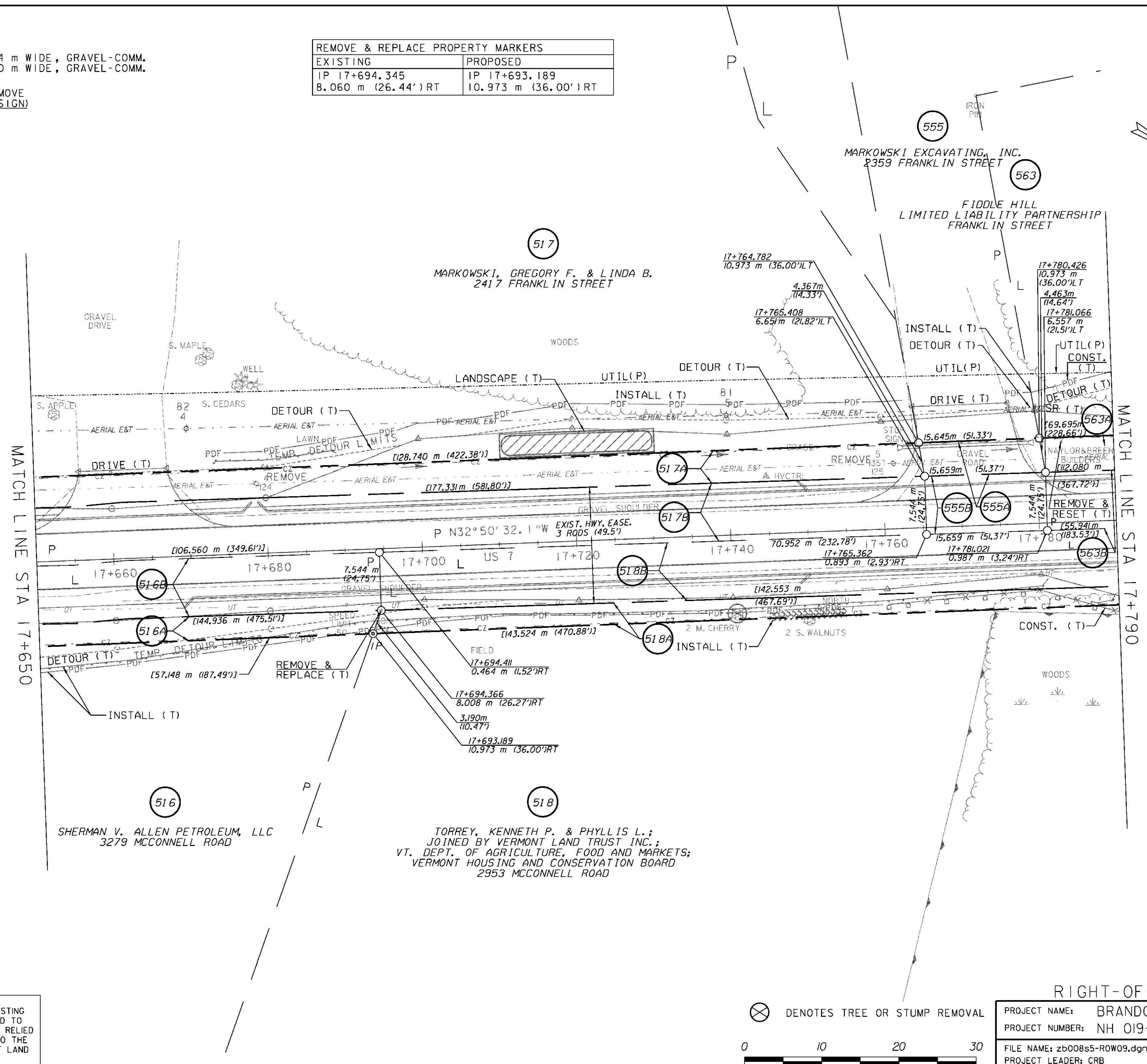


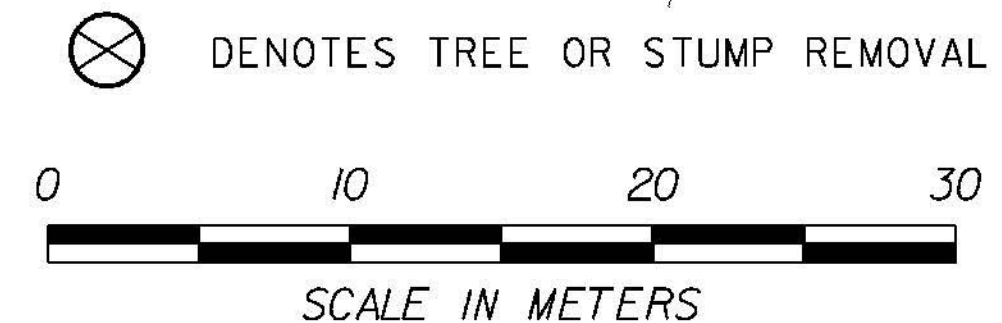
CONSTRUCT DRIVES
 STA 17+660.0 LT - 11.4 m WIDE, GRAVEL-COMM.
 STA 17+770.0 LT - 12.0 m WIDE, GRAVEL-COMM.

SPECIAL PROVISION (REMOVE AND RESET COMMERCIAL SIGN)
 STA 17+783.2 LT

| REMOVE & REPLACE PROPERTY MARKERS | |
|-----------------------------------|----------------------|
| EXISTING | PROPOSED |
| IP 17+694.345 | IP 17+693.189 |
| 8.060 m (26.44') RT | 10.973 m (36.00') RT |



LINES SHOWN ON THIS PLAN AS EXISTING PROPERTY LINES (P/L) ARE BELIEVED TO BE ACCURATE BUT SHOULD NOT BE RELIED UPON FOR PURPOSES UNRELATED TO THE STATE OF VERMONT ACQUISITION OF LAND AND RIGHTS FOR THIS PROJECT



| RIGHT-OF-WAY LAYOUT 9 | |
|-----------------------|-------------------|
| PROJECT NAME: | BRANDON |
| PROJECT NUMBER: | NH 019-3(495) |
| FILE NAME: | zb008s5-ROW09.dgn |
| PROJECT LEADER: | CRB |
| DESIGNED BY: | PTS |
| ROW SHEET 29 OF 164 | |
| PLOT DATE: | 9/3/2009 |
| DRAWN BY: | JCS |
| CHECKED BY: | PTS |
| | SHEET 44 OF 546 |