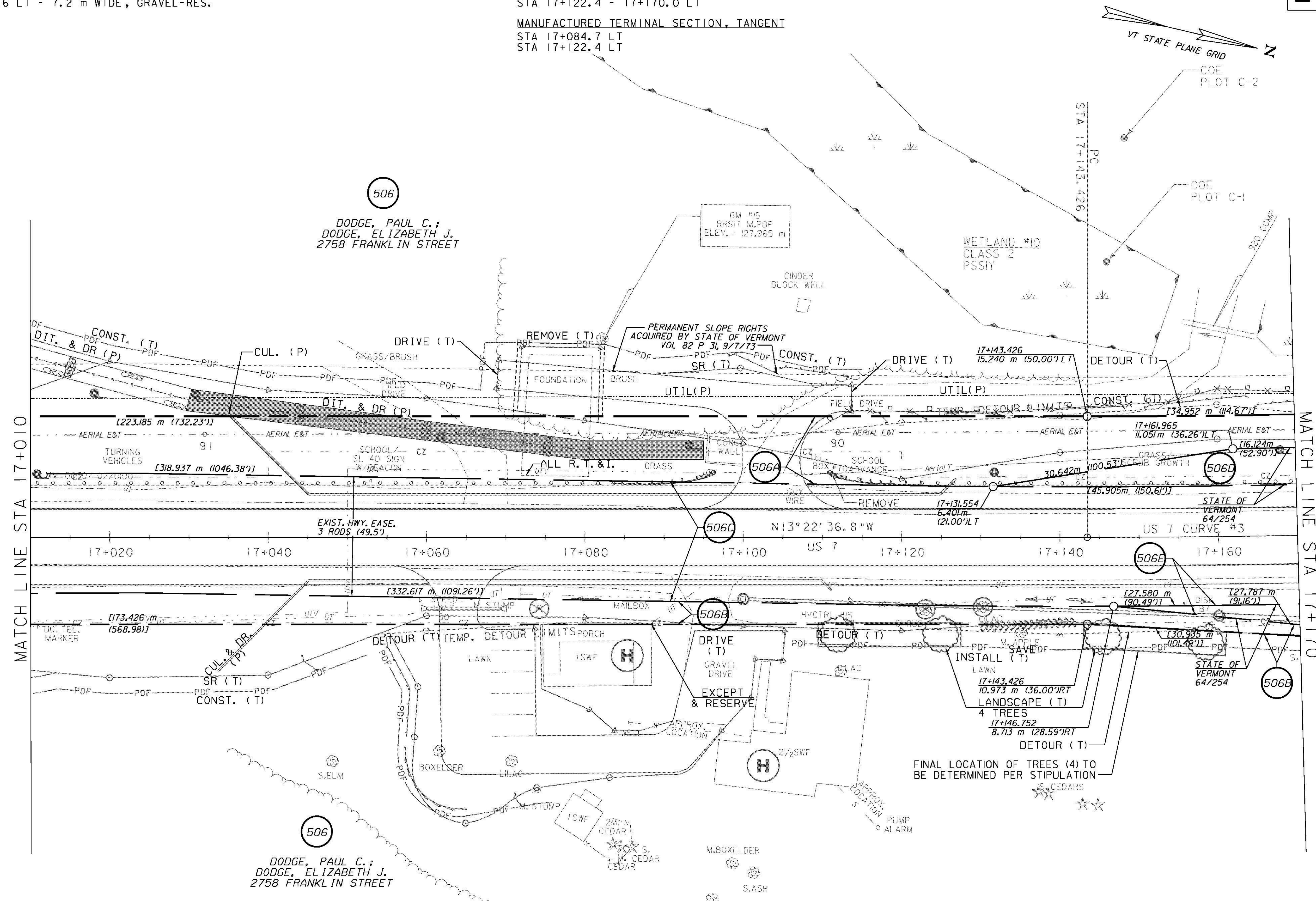


CONSTRUCT DRIVES
 STA 17+064.0 RT - 4.8 m WIDE, GRAVEL-RES.
 STA 17+103.6 LT - 7.2 m WIDE, GRAVEL-RES.

RELOCATE MAILBOX, SINGLE SUPPORT
 STA 17+090.8 RT

STEEL BEAM GUARDRAIL, GALVANIZED
 STA 17+010.0 - 17+084.7 LT
 STA 17+122.4 - 17+170.0 LT

MANUFACTURED TERMINAL SECTION, TANGENT
 STA 17+084.7 LT
 STA 17+122.4 LT



LINES SHOWN ON THIS PLAN AS EXISTING PROPERTY LINES (P/L) ARE BELIEVED TO BE ACCURATE BUT SHOULD NOT BE RELIED UPON FOR PURPOSES UNRELATED TO THE STATE OF VERMONT ACQUISITION OF LAND AND RIGHTS FOR THIS PROJECT

⊗ DENOTES TREE OR STUMP REMOVAL



RIGHT-OF-WAY LAYOUT 5	
PROJECT NAME:	BRANDON
PROJECT NUMBER:	NH 019-3(495)
FILE NAME:	zb008s5-ROW05.dgn
PROJECT LEADER:	CRB
DESIGNED BY:	PTS
ROW SHEET 25 OF 164	
PLOT DATE:	9/3/2009
DRAWN BY:	JCS
CHECKED BY:	PTS
	SHEET 40 OF 546