

**CONSTRUCT DRIVES**  
 STA 16+430.0 RT - 5.5 m WIDE, PAVED-RES.  
 STA 16+475.0 LT - 5.4 m WIDE, PAVED-COMM.  
 STA 16+502.8 RT - 3.6 m WIDE, PAVED-RES.

REMOVE & REPLACE PROPERTY MARKERS	
EXISTING	PROPOSED
IP 16+484.909 14.483 m (47.52') RT	IP 16+484.923 15.240 m (50.00') RT

**REMOVING AND RESETTING LIGHT POLE**  
 STA 16+482.5 LT  
 STA 16+513.7 LT

**SPECIAL PROVISION (REMOVING AND RESETTING GROUND/ORNAIMENTAL LIGHT ASSEMBLY)**  
 STA 16+440.2 RT  
 STA 16+445.6 RT

**RELOCATE MAILBOX, SINGLE SUPPORT**  
 STA 16+499.1 RT

**RELOCATE MAILBOX, MULTIPLE SUPPORT**  
 STA 16+421.0 RT

**REMOVAL AND DISPOSAL OF GUARDRAIL**  
 STA 16+482.9 - 16+530.0 LT

**STEEL BEAM GUARDRAIL, GALVANIZED**  
 STA 16+495.0 - 16+520.0 LT

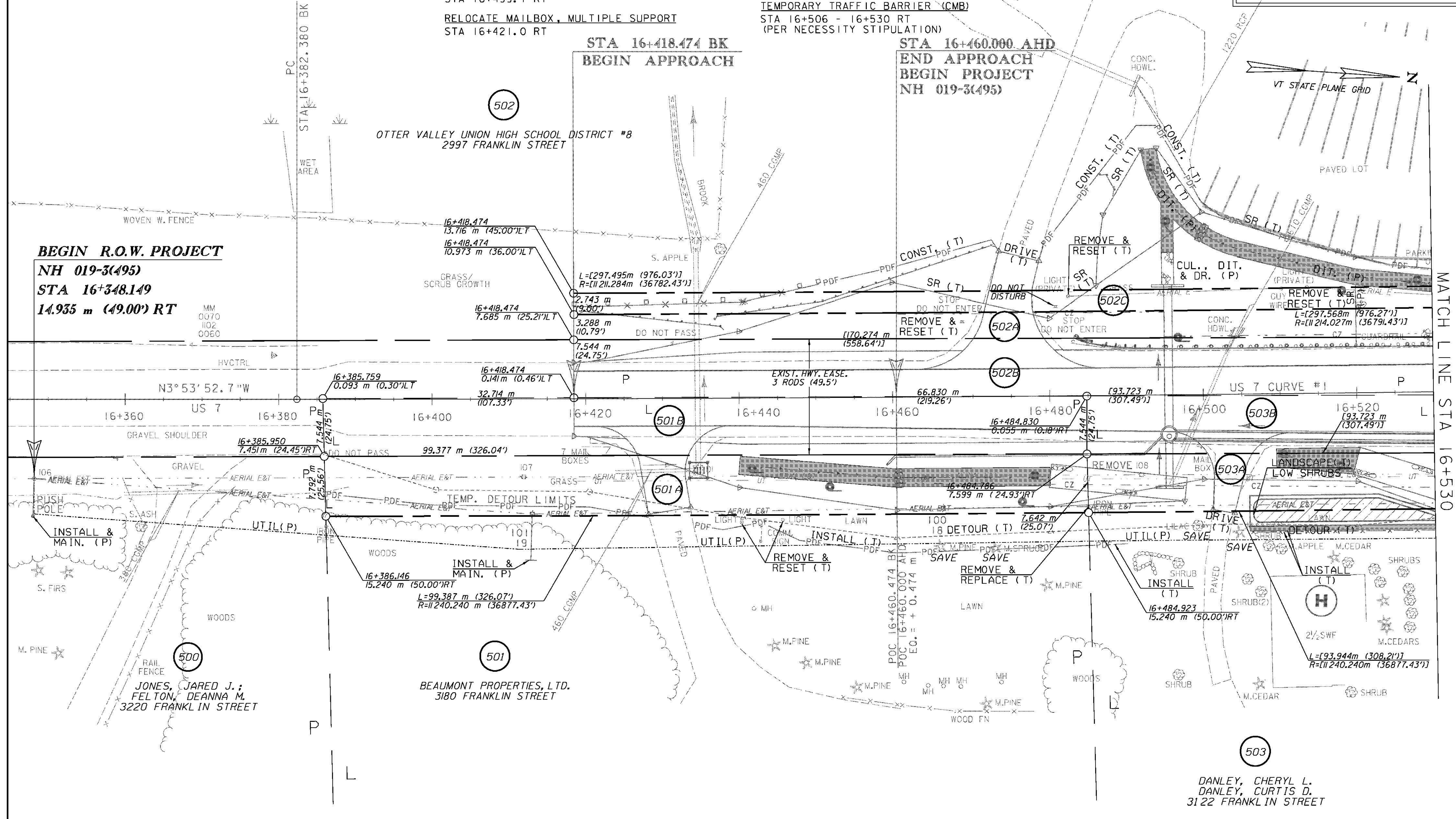
**CHAIN-LINK FENCE, 1.8M BRACING ASSEMBLY FOR CHAIN-LINK FENCE GEOTEXTILE FOR SILT FENCE**  
 STA 16+506 - 16+530 RT

**TEMPORARY TRAFFIC BARRIER (CMB)**  
 STA 16+506 - 16+530 RT  
 (PER NECESSITY STIPULATION)

**STEEL BEAM GUARDRAIL, GALVANIZED W/2.4m POSTS**  
 STA 16+520.0 - 16+530.0 LT

**MANUFACTURED TERMINAL SECTION, TANGENT**  
 STA 16+495.0 LT

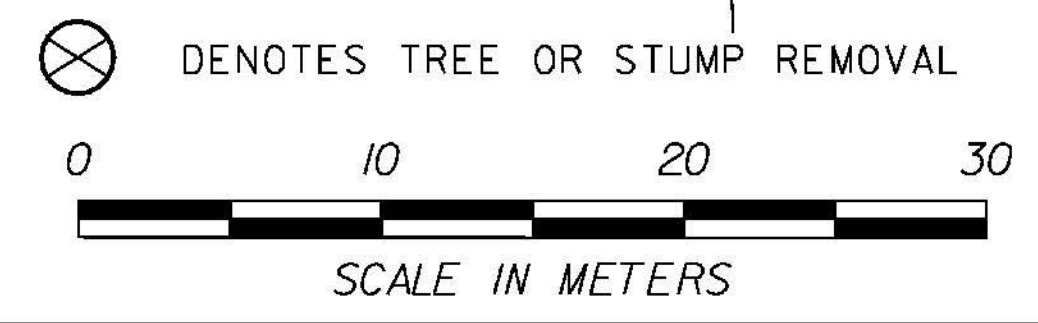
SEE EROSION PREVENTION AND SEDIMENT CONTROL PLANS FOR CONSTRUCTION NOTES FOR STONE FILL, GEOTEXTILE AND EROSION MATTING.



**BEGIN R.O.W. PROJECT**  
 NH 019-3(495)  
 STA 16+348.149  
 14.935 m (49.00') RT

MATCH LINE STA 16+530

LINES SHOWN ON THIS PLAN AS EXISTING PROPERTY LINES (P/L) ARE BELIEVED TO BE ACCURATE BUT SHOULD NOT BE RELIED UPON FOR PURPOSES UNRELATED TO THE STATE OF VERMONT ACQUISITION OF LAND AND RIGHTS FOR THIS PROJECT



**RIGHT-OF-WAY LAYOUT 1**

PROJECT NAME: BRANDON	PLOT DATE: 9/3/2009
PROJECT NUMBER: NH 019-3(495)	DRAWN BY: JCS
FILE NAME: zb008s5-ROW01.dgn	CHECKED BY: PTS
PROJECT LEADER: CRB	SHEET 36 OF 546
DESIGNED BY: PTS	
ROW SHEET 21 OF 164	