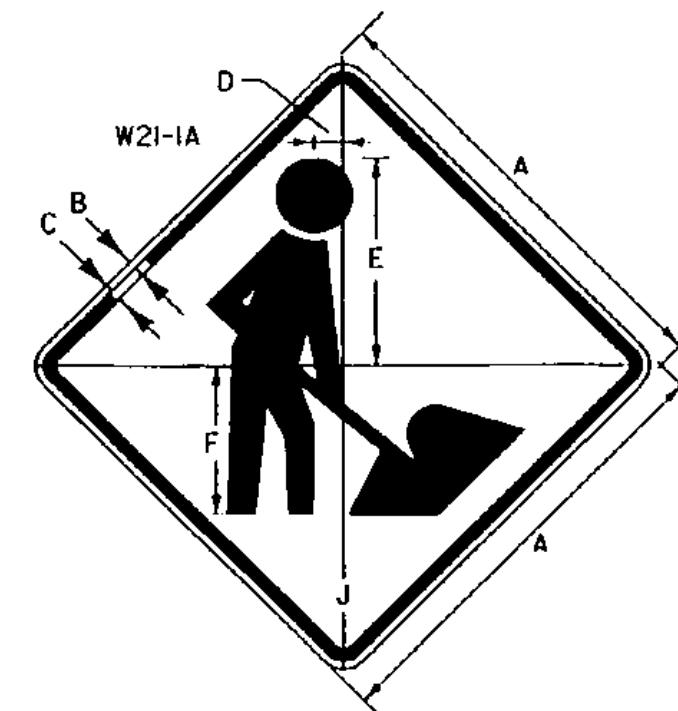
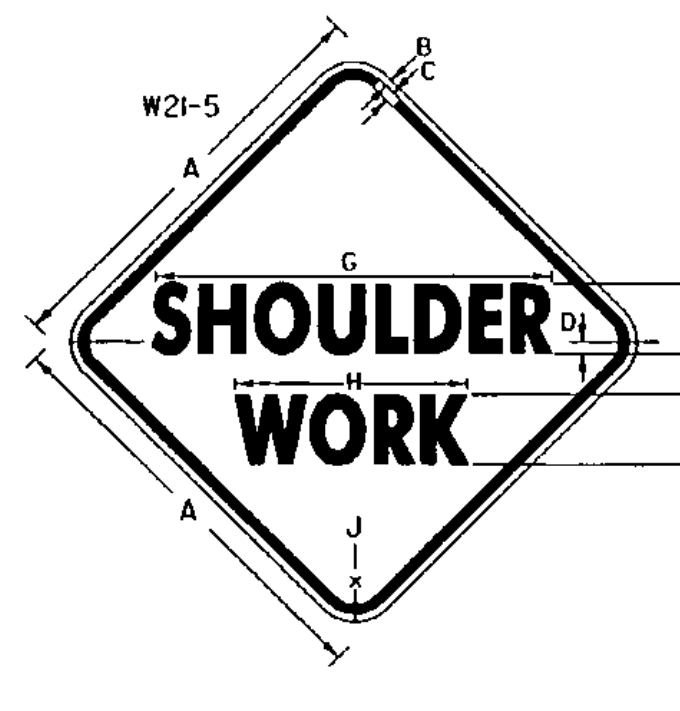


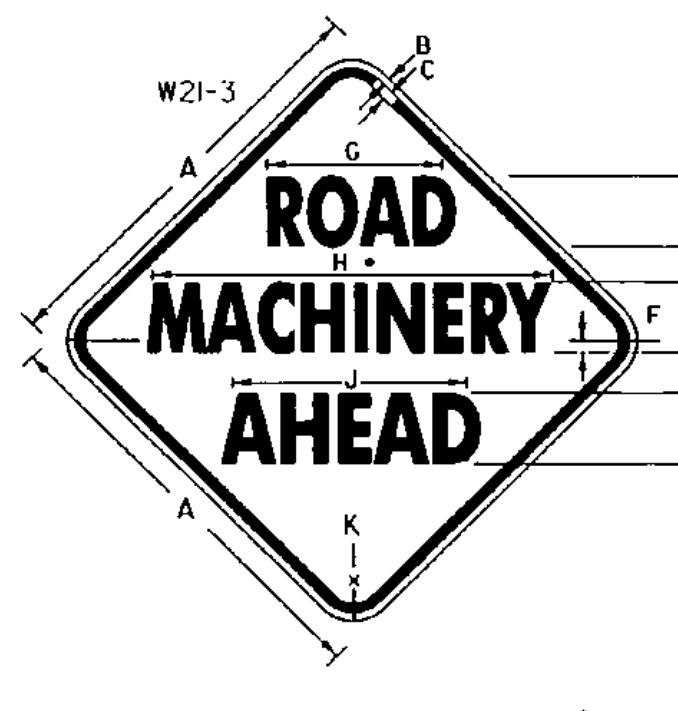
**4 - LANE HIGHWAY
MEDIAN MAINTENANCE**



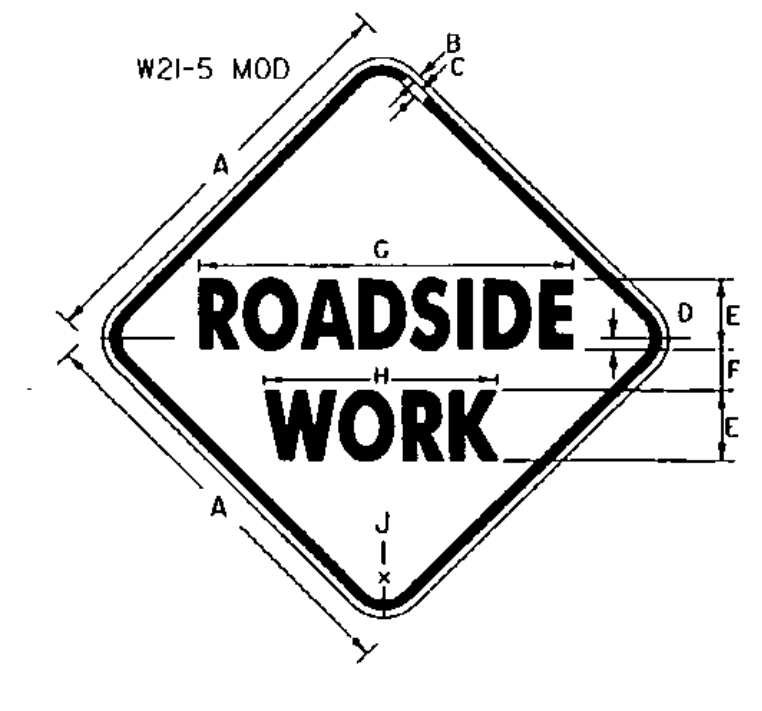
SIGN	DIMENSIONS (mm)						
	A	B	C	D	E	F	J
2 LANE	900	15	20	55	420	300	55
4 LANE	1200	20	30	75	560	400	75



SIGN	DIMENSIONS (mm)									
	A	B	C	D	E	F	G	H	J	K
2 LANE	900	15	20	25	125	85	86.6	45.6	55	
4 LANE	1200	20	30	25	175	100	101.5	53.5	75	

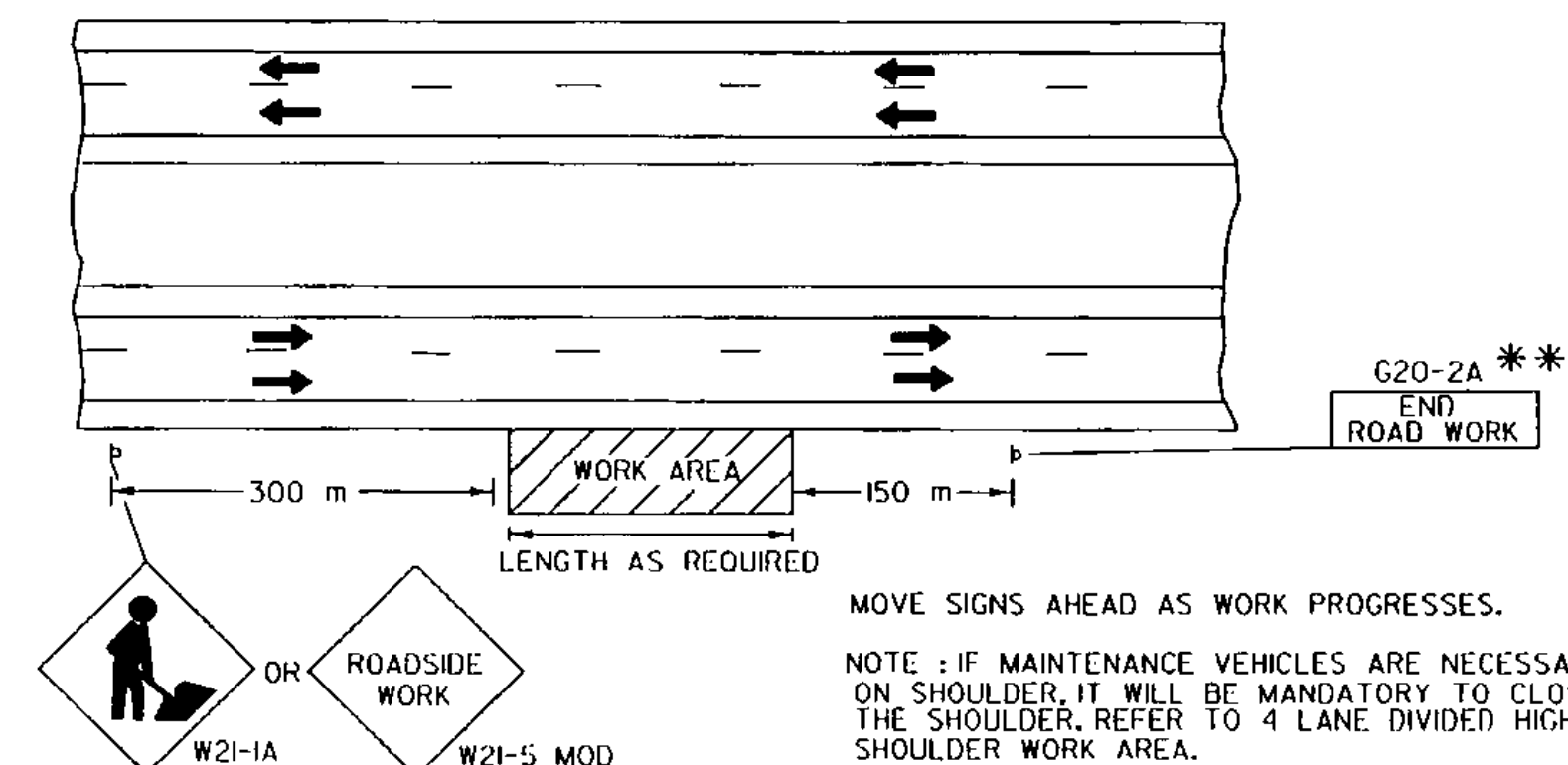


SIGN	DIMENSIONS (mm)										
	A	B	C	D	E	F	G	H	J	K	L
2 LANE	900	15	20	250	100	60	437	874	553	55	
4 LANE	1200	20	30	375	125	85	613	1228	776	75	

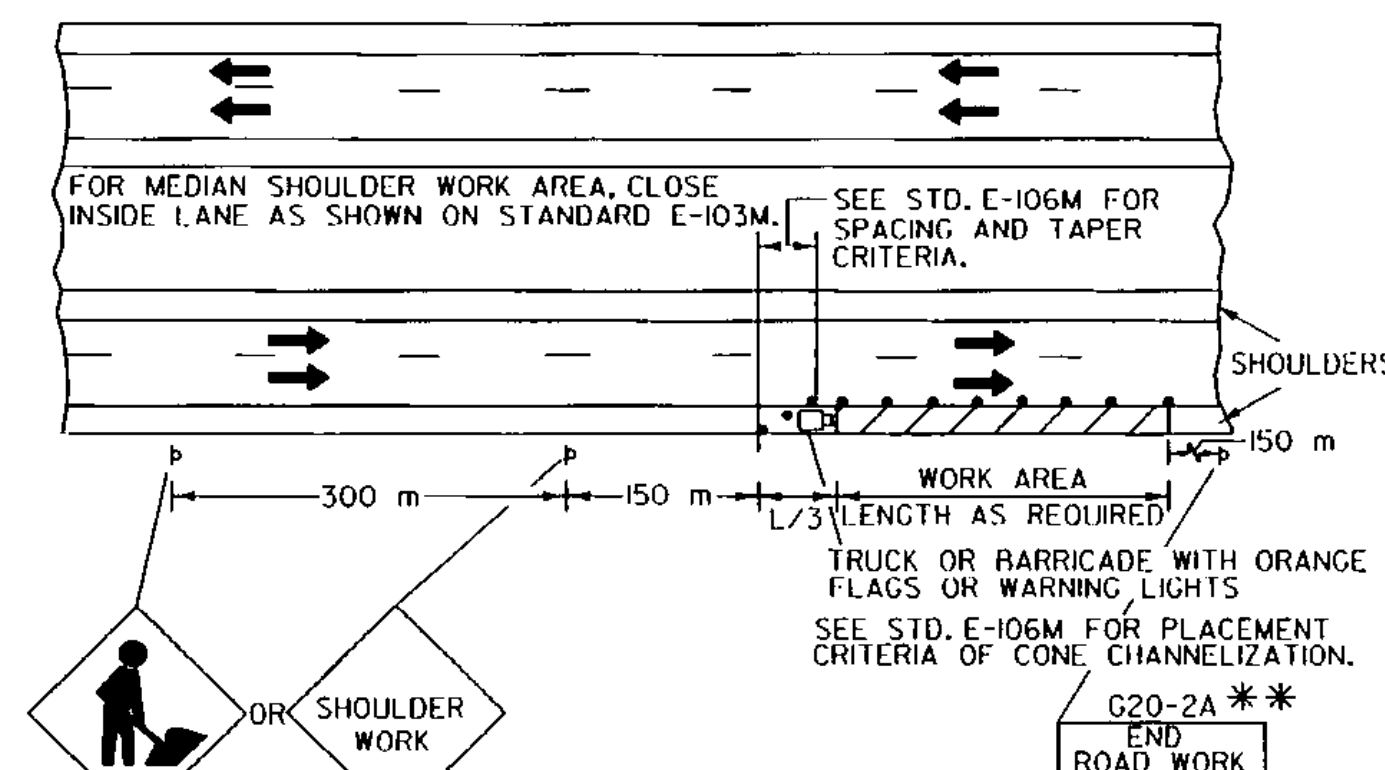


SIGN	DIMENSIONS (mm)									
	A	B	C	D	E	F	G	H	J	K
2 LANE	900	15	20	10	125	85	81.8	45.6	55	
4 LANE	1200	20	30	25	175	100	94.8	53.5	75	

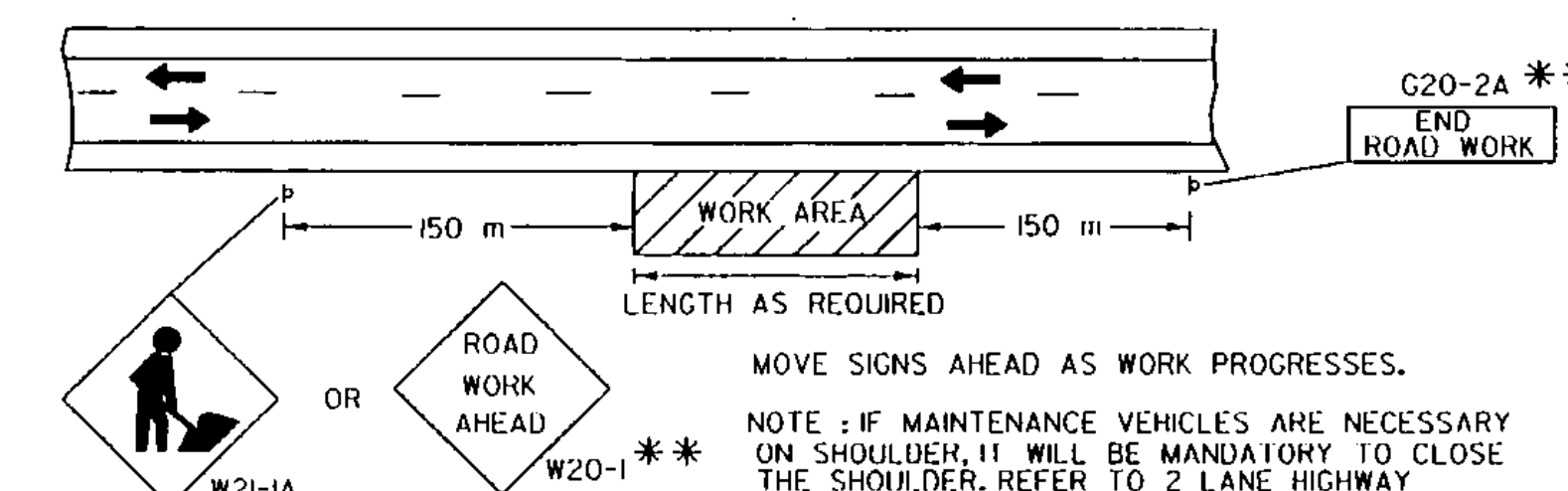
* REDUCE SPACING BY 40 %



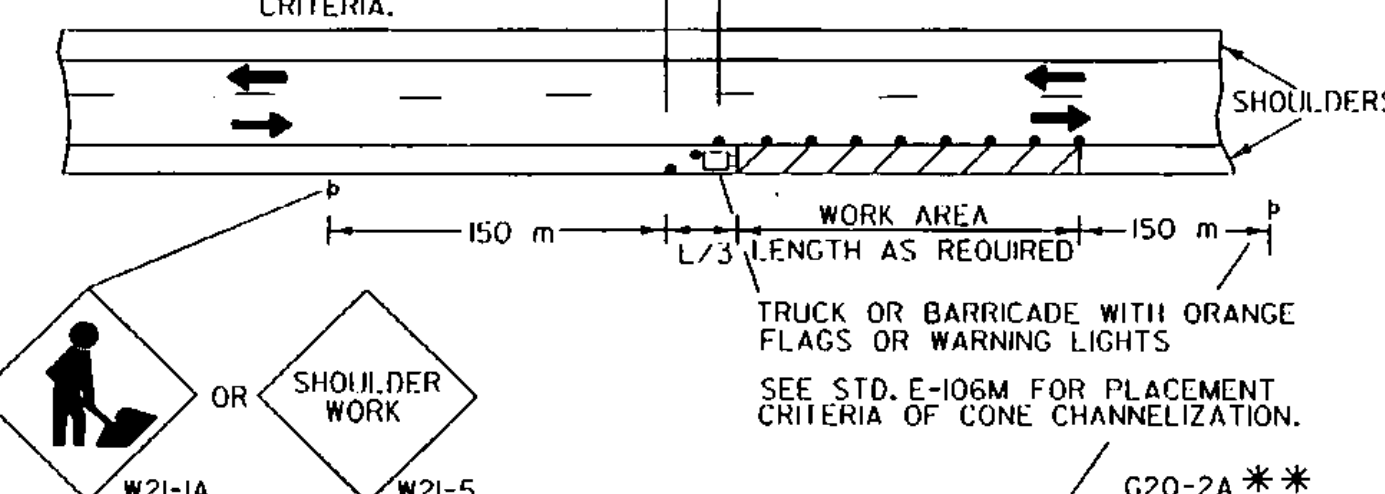
**4 - LANE HIGHWAY
MAINTENANCE OUTSIDE SHOULDER**



**4 - LANE DIVIDED HIGHWAY
SHOULDER WORK AREA**



**2 - LANE HIGHWAY
MAINTENANCE OUTSIDE SHOULDER**



**2 - LANE HIGHWAY
SHOULDER WORK AREA**

NOTES:

REFLECTORIZATION:
ALL REFLECTIVE MATERIAL SHALL CONSIST OF ENCAPSULATED LENS REFLECTIVE SHEETING. THE TEXT AND BORDERS MAY BE SCREENED, LETTERING FILM OR HAND PAINTED.

COLORS:
THE WARNING SIGNS SHOWN ON THIS SHEET SHALL HAVE A BLACK TEXT AND BORDER ON A REFLECTORIZED ORANGE BACKGROUND. THE ORANGE SHALL CONFORM WITH THE STANDARD COLORS ADOPTED BY AASHTO AND APPROVED BY FHWA.

TEXT DESIGN:
LETTERS, SPACING AND TEXT DIMENSIONS SHALL CONFORM TO THE LATEST VERSION OF FHWA'S "STANDARD ALPHABETS FOR HIGHWAY SIGNS AND PAVEMENT MARKINGS".

SPECIFICATIONS:
WARNING SIGNS SHALL MEET THE STANDARD STATE SPECIFICATIONS FOR SIGNS AS PRESCRIBED IN THE VDOT STANDARD SPECIFICATIONS FOR CONSTRUCTION.

SIGN BASE MATERIAL:
THE SIGN BASE MATERIAL USED FOR THE WARNING SIGNS SHOWN ON THIS SHEET MAY BE OF ANY OF THE FOLLOWING, WITH MINIMUM THICKNESS AS NOTED:

(1) FLAT SHEET ALUMINUM	900x900	1200x1200
(2) HIGH DENSITY OVERLAYED PLYWOOD	2.54 mm	3.18 mm
(3) GALVANIZED SHEET STEEL	16 mm	19 mm
	2.01 mm	2.77 mm

**
SEE STD. E-100M FOR 'ROAD WORK'
AND 'END ROAD WORK' SIGN DIMENSIONS.

REVISIONS AND CORRECTIONS

JUNE 13, 1997 - ORIGINAL APPROVAL DATE
FEBRUARY 17, 1998 - NUMBER CHANGE FROM E-10M
TO E-11M

APPROVED

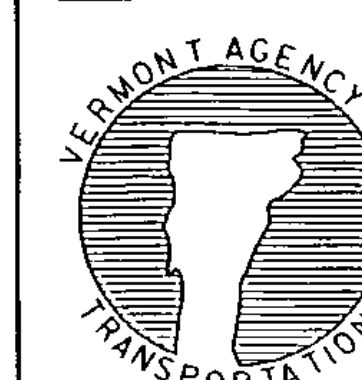
[Signature]
DIRECTOR OF PROJECT DEVELOPMENT

[Signature]
DIRECTOR OF CONSTRUCTION AND MAINTENANCE

TRAFFIC SIGNS
TYPICAL MINOR
MAINTENANCE OPERATION
APPROACH SIGNS

OTHER STDS. E-100M E-106M
REQUIRED: E-103M

NOTE: ALL DIMENSIONS ARE IN MILLIMETERS (mm) EXCEPT WHERE NOTED.



Metric
STANDARD
E-111M